



EAST-WEST GATEWAY  
Council of Governments

# Gateway to Safer Roadways

St. Louis Regional  
SS4A Safety Action Plan

Progress Update

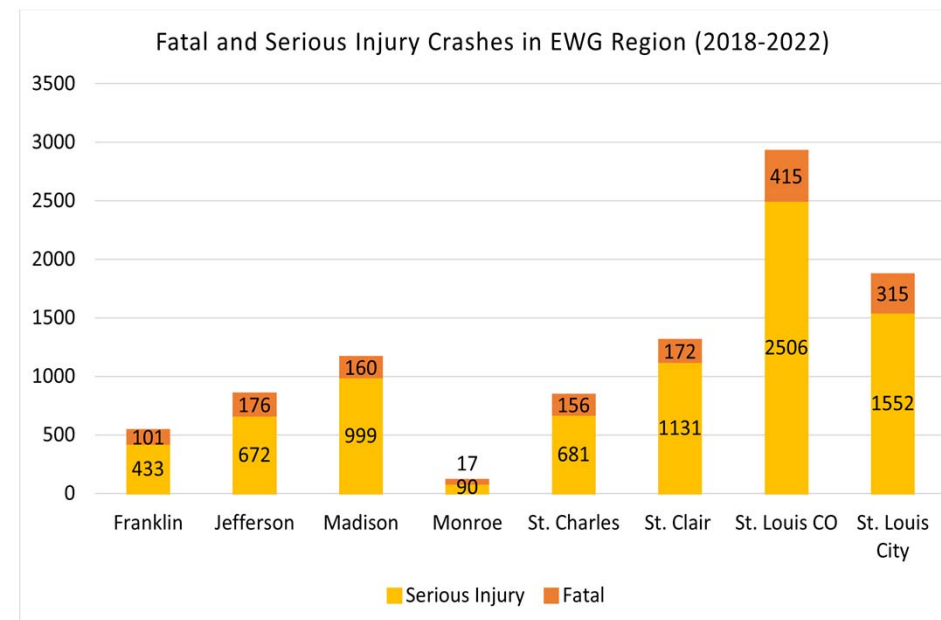
3/27 BOD Meeting



# Why we are here

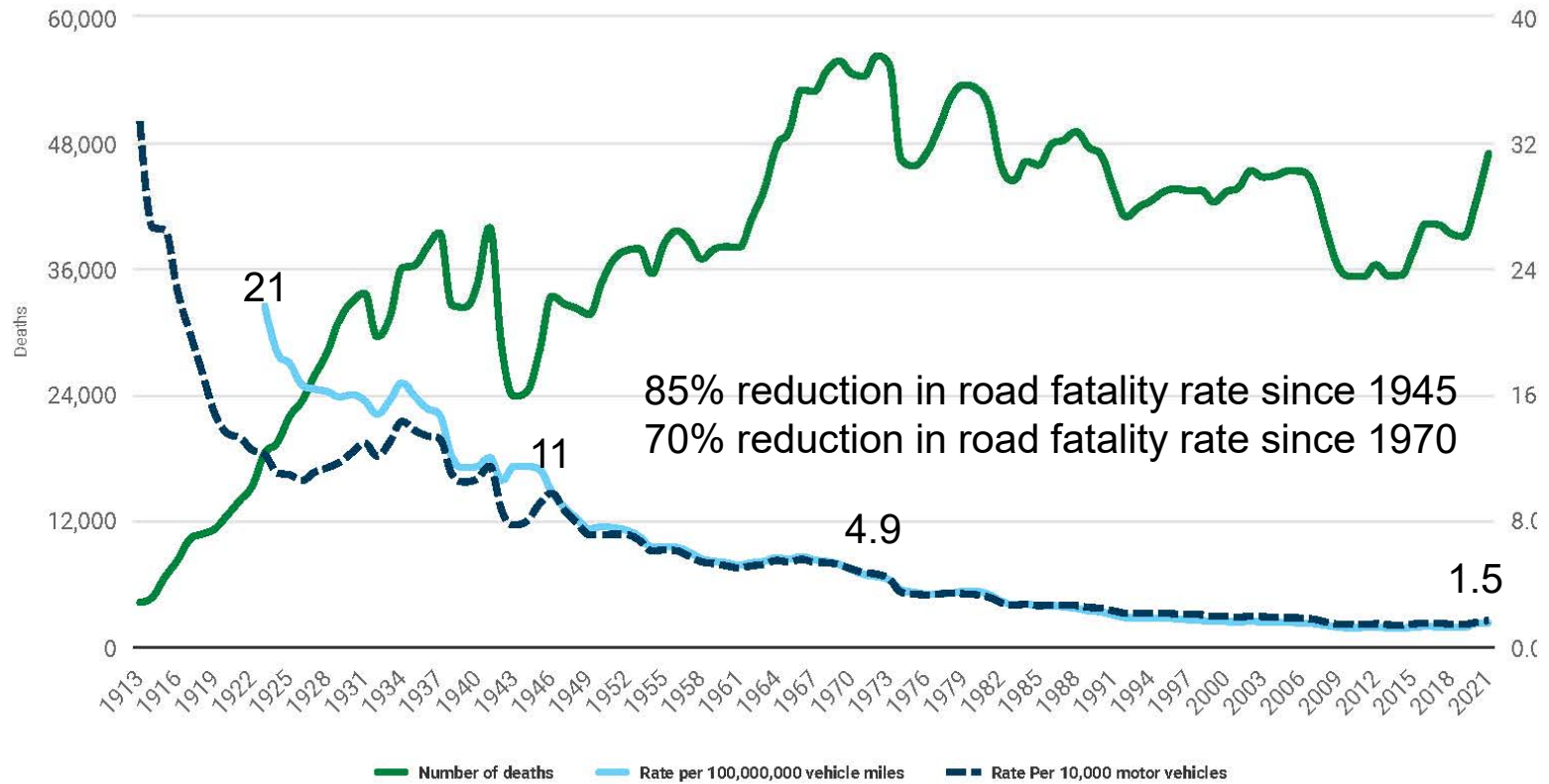
- Roadway crashes are the **leading cause of death for ages 8-20** and second leading cause of death from unintentional injury in the United States. (NHTSA 2016).
- The St. Louis Region ranks above peer regions in fatal crashes per 100 MVM (EWG 2021).
  - St. Louis = 1.06
  - Peer Average = 1.04
  - Minneapolis = 0.63

## 2018-2022 EWG Region = 9,576 Fatal & Serious Crashes (~1,915 per year)



# Moving the Needle

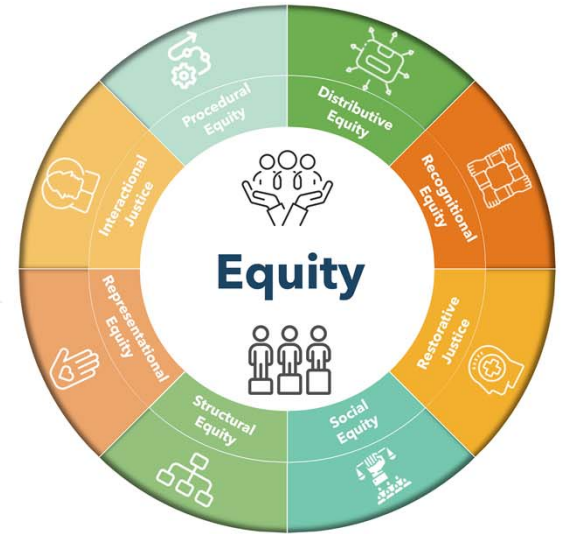
Deaths and MV rates, 1913-2021



<https://injuryfacts.nsc.org/motor-vehicle/historical-fatality-trends/deaths-and-rates/>



# Study Approach

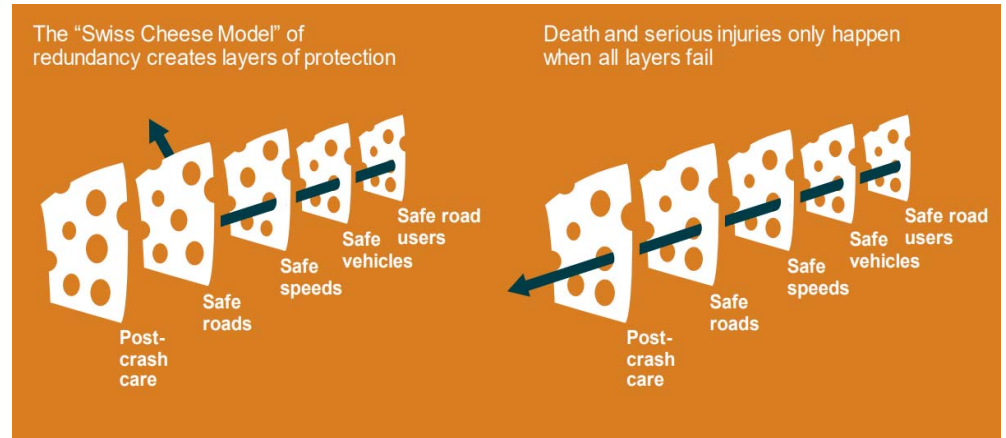


Best Practices

Engagement

Safety Analysis

Safety Action Plan



# Stakeholder Engagement

- Regional Task Force
- St. Louis County
- St. Louis City
- Jefferson/Franklin Counties
- St. Charles County
- Madison/Monroe/St. Clair Counties



Meeting #	Date	Meeting Objective
Meeting 1	January 16 – 25	Educate Stakeholders on Project
Meeting 2	February 25 – March 1	Present High Injury Networks Brainstorm Project Recommendations
Meeting 3	April 29 – May 3	Present the draft Action Plan



# Regional Task Force

- Automobile Club of Missouri
- FHWA (IL)
- FHWA (MO)
- Franklin County
- Generate Health STL
- Great Rivers Greenway
- IDOT
- Illinois State Highway Patrol
- Jefferson County
- Madison County
- Metro
- Missouri Eastern Region Law Enforcement Liaison
- Missouri State Highway Patrol
- MoDOT
- Monroe County
- St. Charles County
- St. Charles County Ambulance District
- St. Clair County
- St. Louis City
- St. Louis County
- Trailnet
- Transform 314
- Urban League



Federal Highway Administration  
March 2024



Gateway to Safer Roadways

# Five High-Injury Networks

All Modes  
(All Road except Interstates/ramps)

Vulnerable Road Users  
(Pedestrian & Bicyclist)

Underserved Communities





Top Contributing Factors

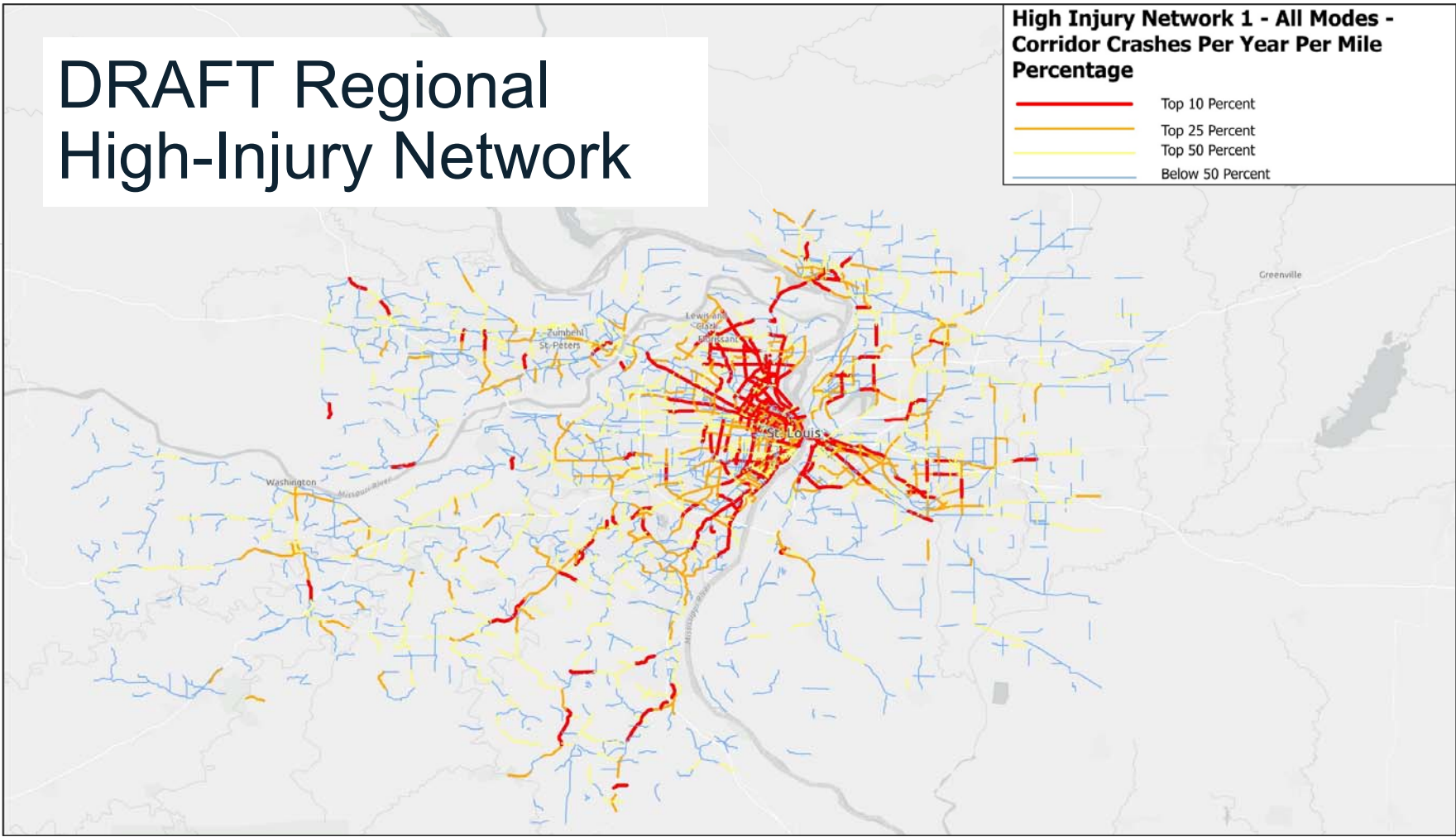
Interstate Hot Spots



# DRAFT Regional High-Injury Network

**High Injury Network 1 - All Modes - Corridor Crashes Per Year Per Mile Percentage**

	Top 10 Percent
	Top 25 Percent
	Top 50 Percent
	Below 50 Percent

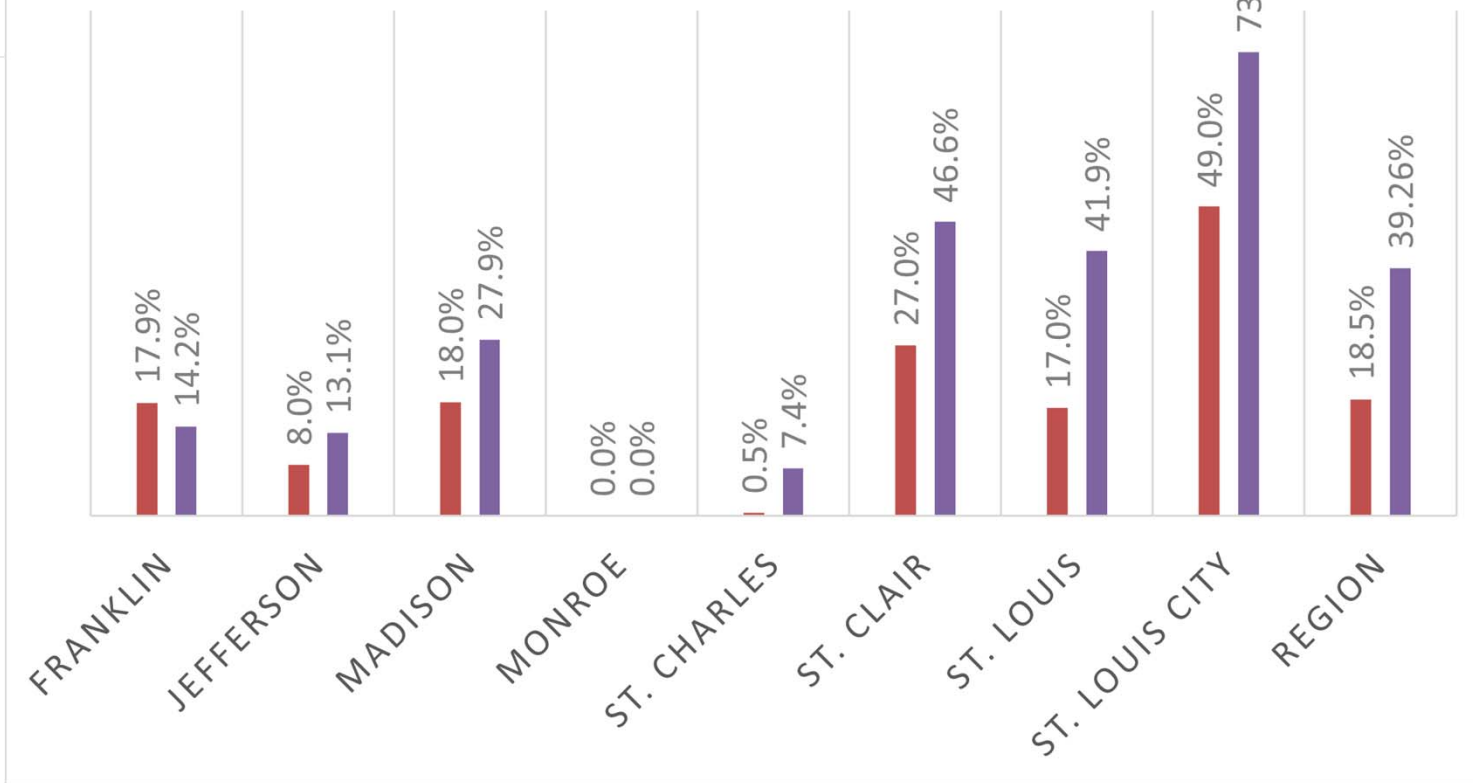






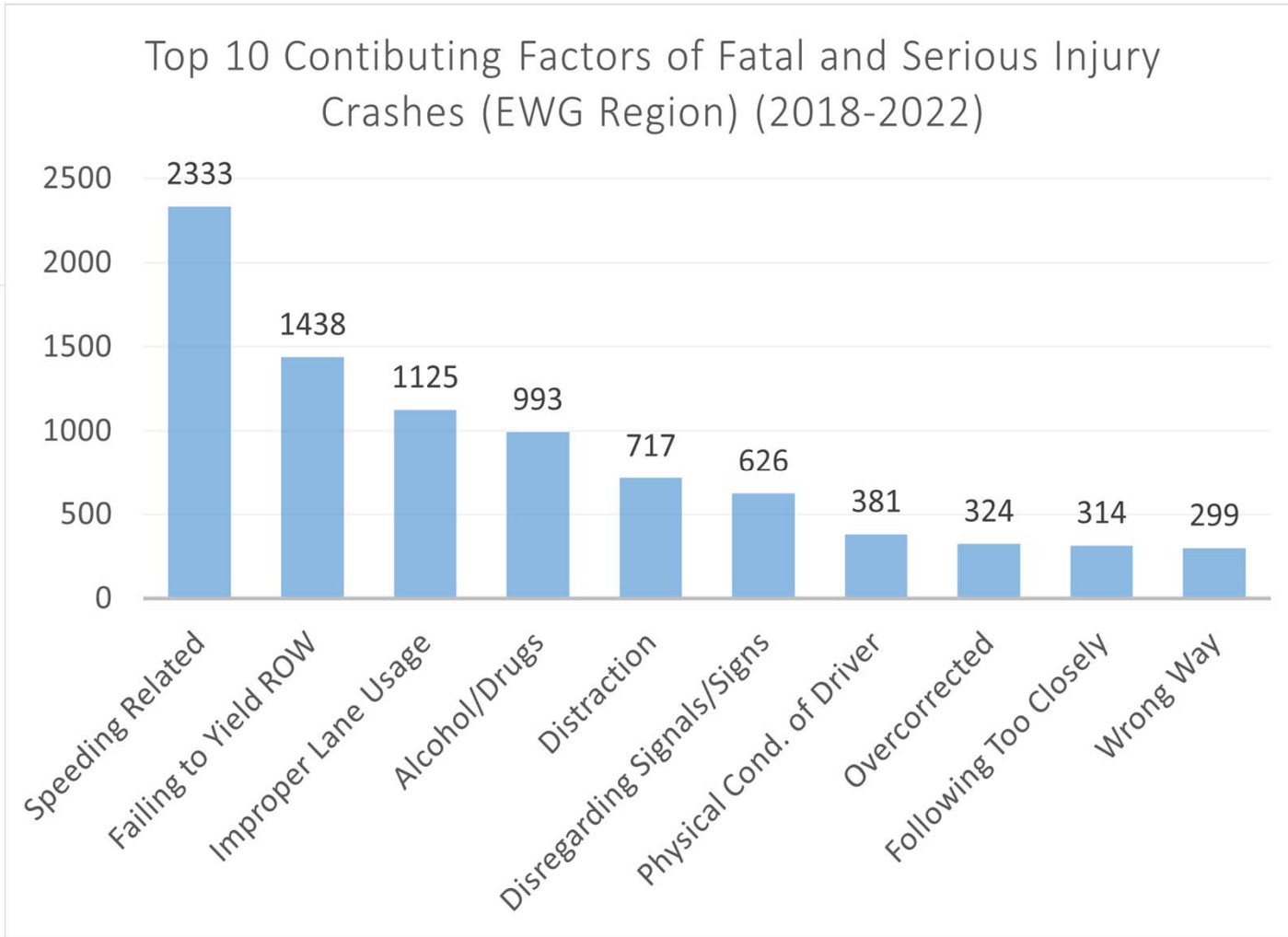
## PERCENT POPULATION AND KSI CRASHES IN CEJST DISADVANTAGED AREA (2018-2022)

■ %Population    ■ %Fatal and Serious Injury Crashes





### Top 10 Contributing Factors of Fatal and Serious Injury Crashes (EWG Region) (2018-2022)



The St. Louis Region ranks 4th highest in peer regions for speed related fatal crashes per 100 MVM (EWG 2021)

- St. Louis= 0.49
- Peer Ave= 0.32
- Nashville=0.18

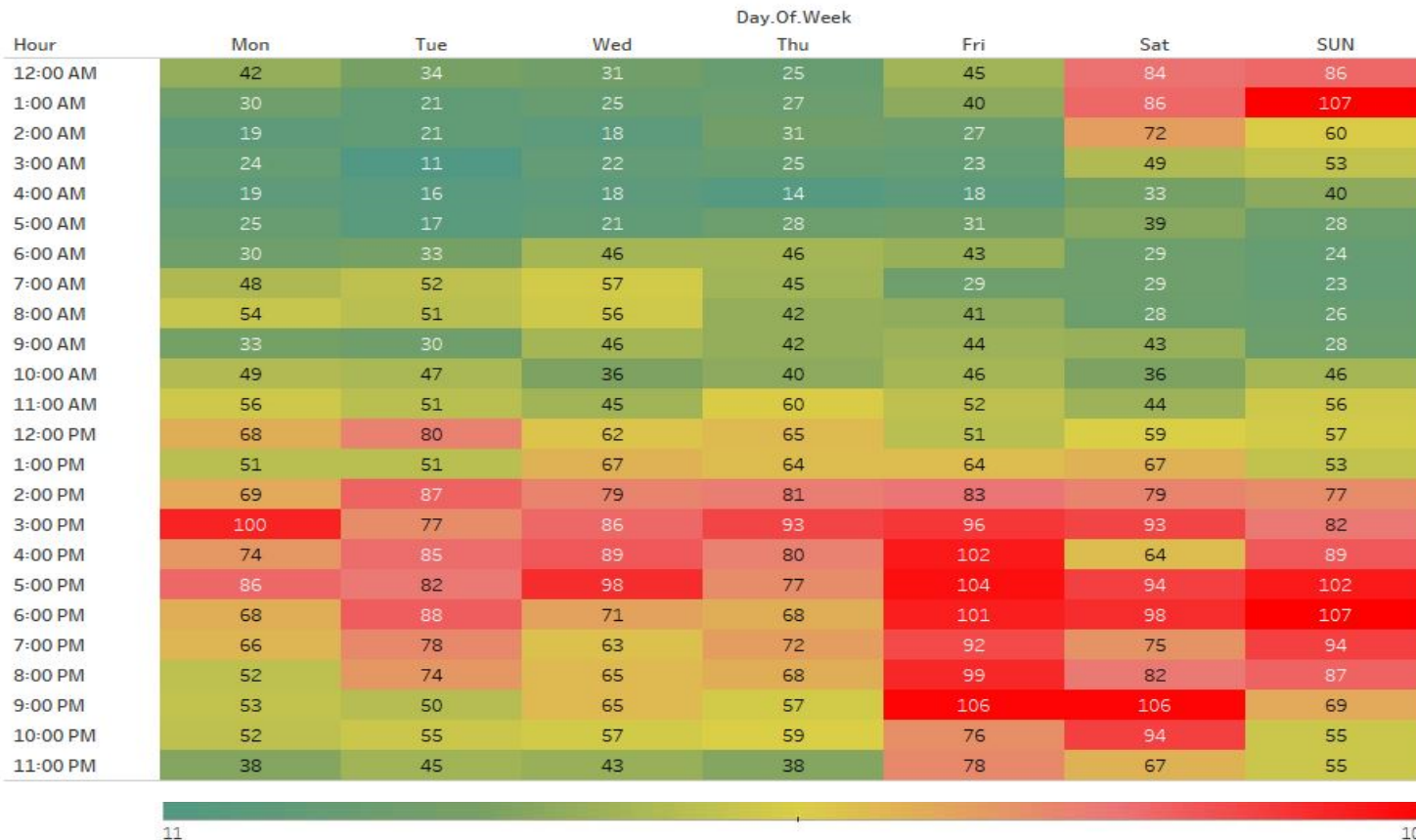


# Fatal and Serious Crashes (KSI) Month and Day, EWG Region, (2018-2022)

Fatal and Serious Injury Crashes by Month and Day of the Week (EWG Region) (2018-2022)

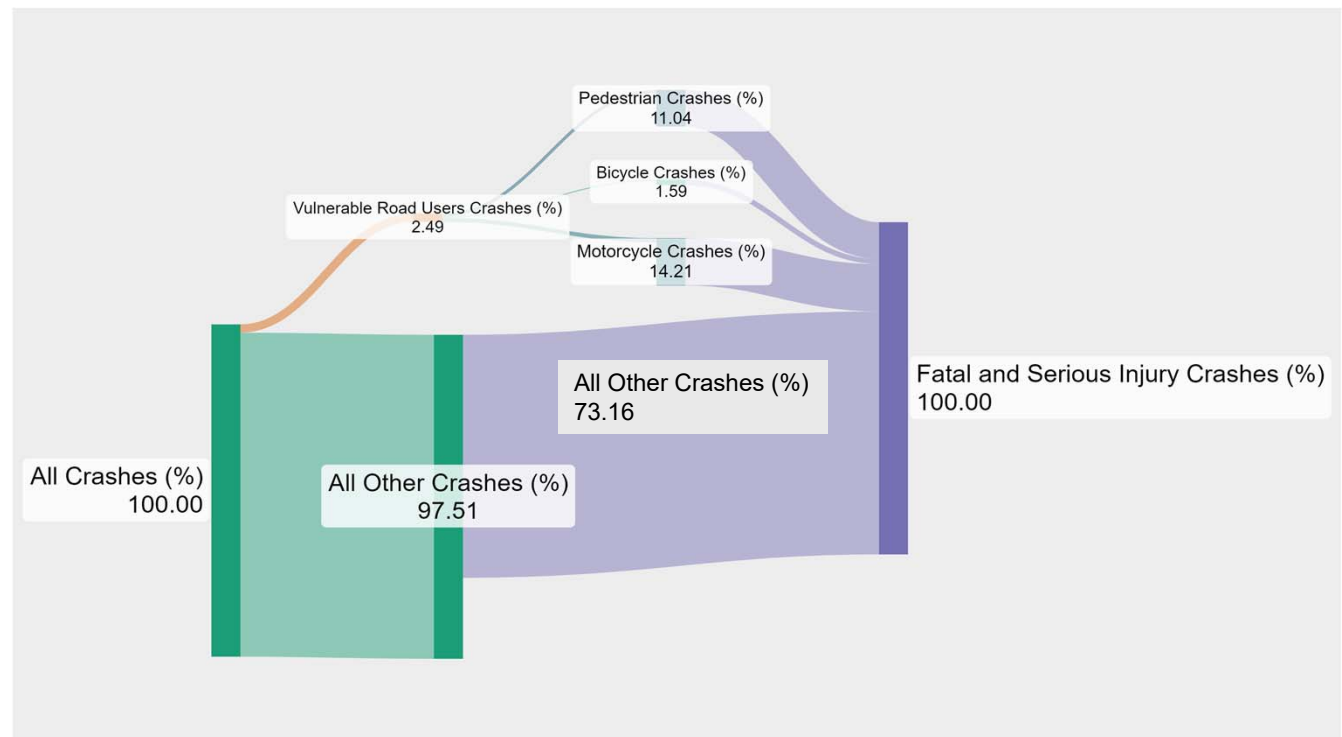


# Fatal and Serious Crashes (KSI) - Day and Time, EWG Region, (2018-2022)

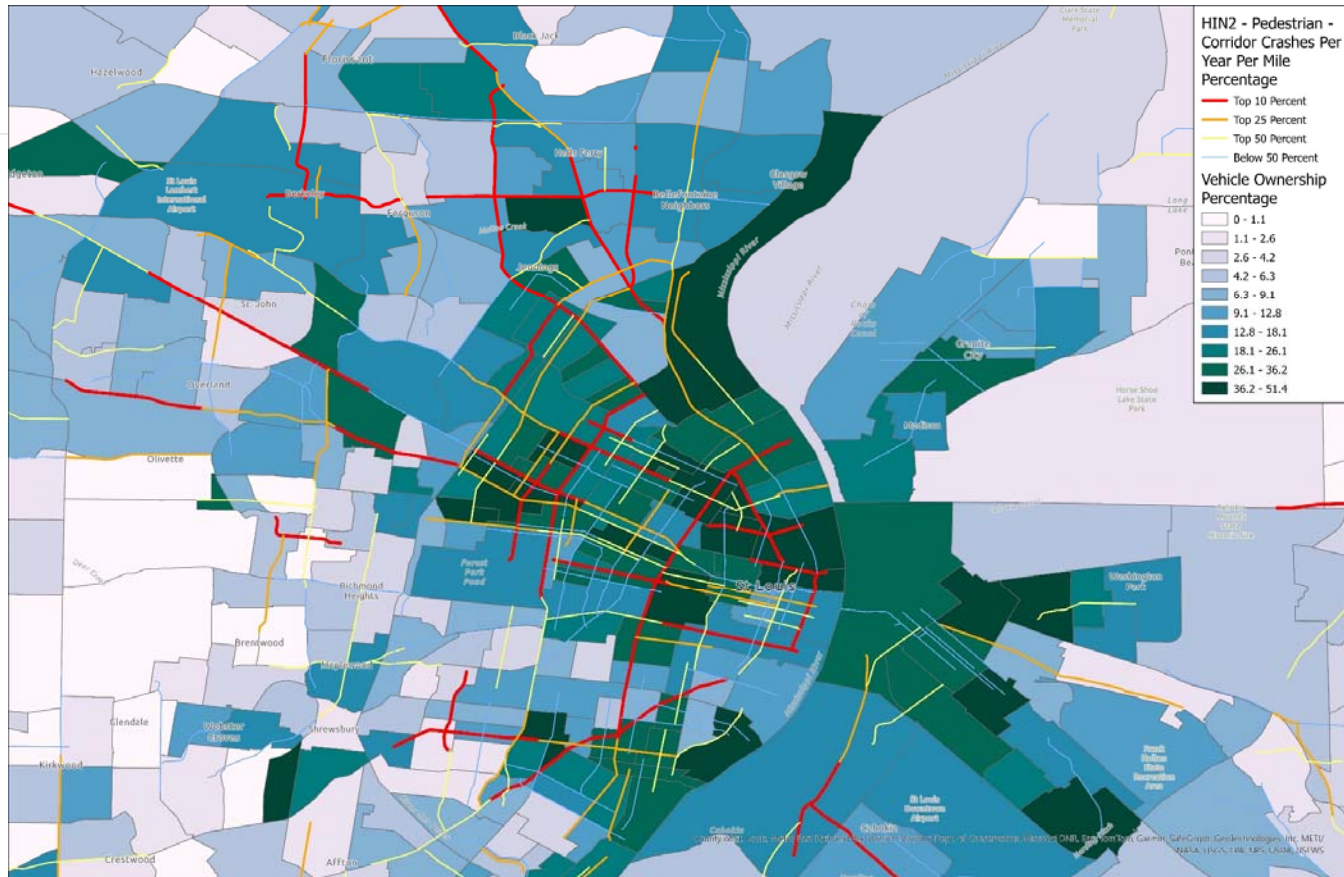


# Over-Represented in Fatal and Serious Injury, EWG Region (2018-2022)

- Pedestrians
- Bicyclists
- Motorcycles

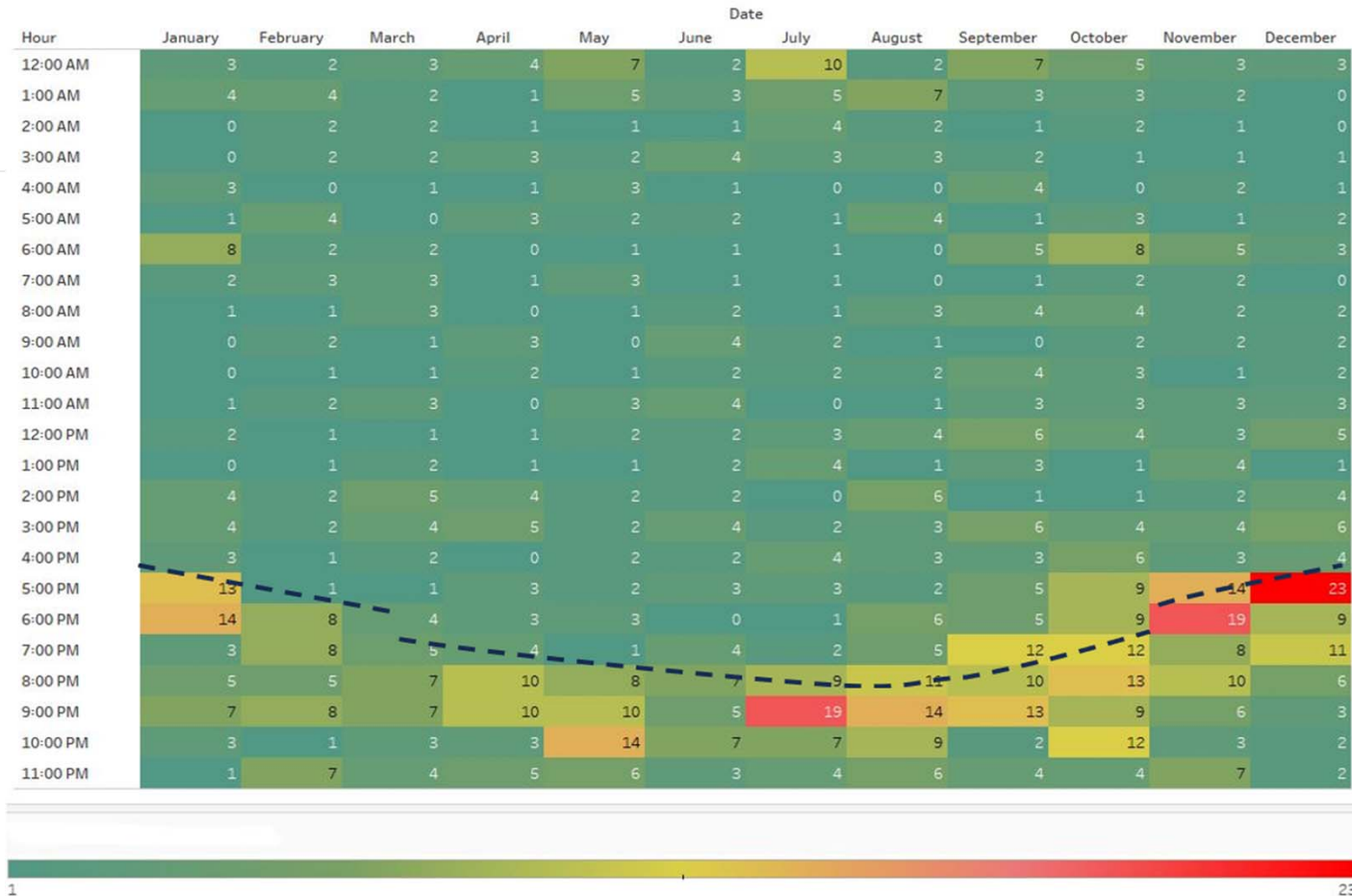


# DRAFT Pedestrian High-Injury Network with Vehicle Ownership (2018-2022)

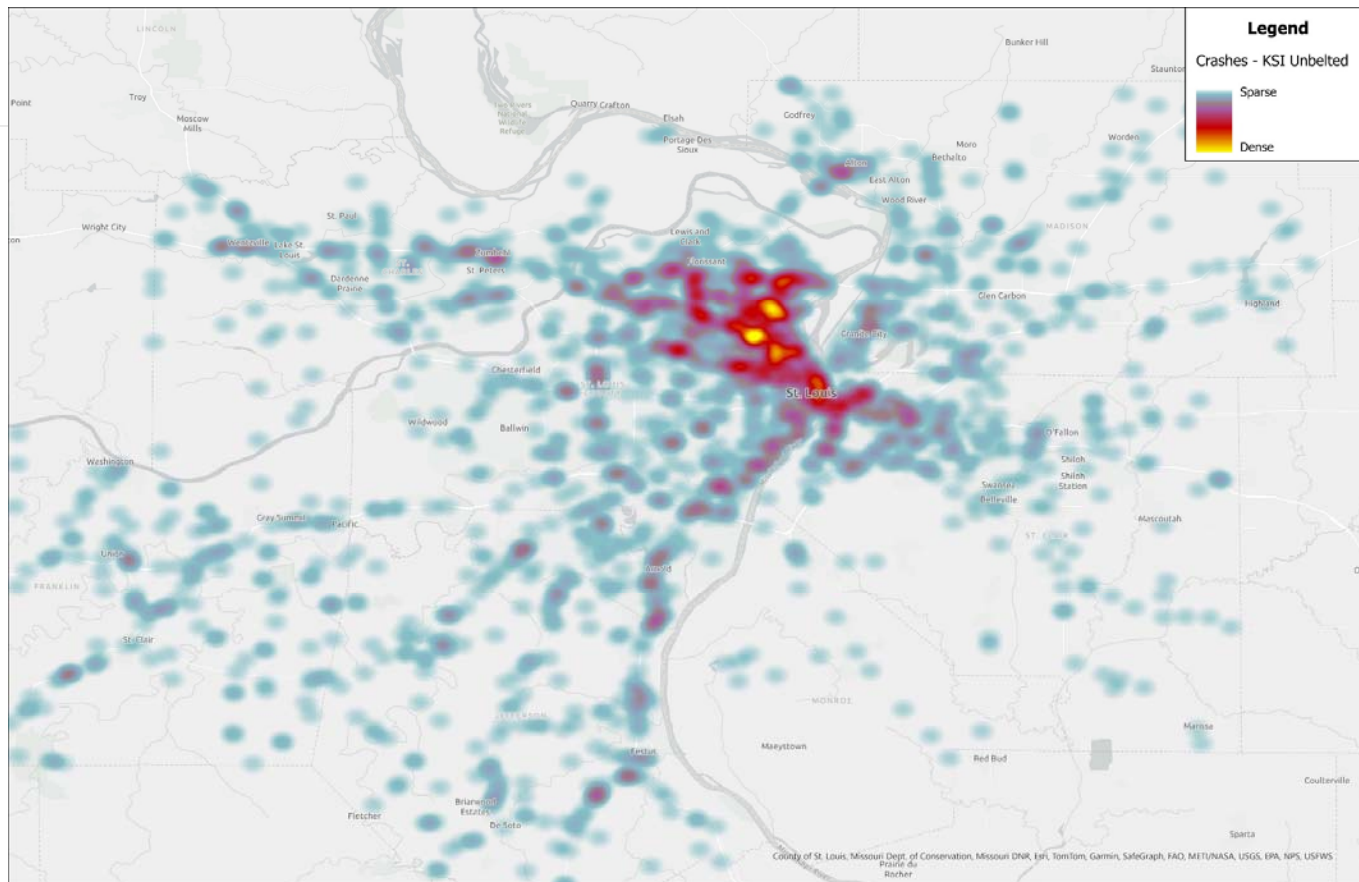


# Pedestrian Crashes (KSI) 1,057~11% of EWG Region Total (2018-2022)

Fatal and Serious Injury Pedestrian Crashes by Month and Hour of the Day (EWG Region) (2018-2022)



# Unbelted Fatal and Serious Crashes (KSI) Heat Map (2018-2022)





# Strengths

- 1 Laws, Regulations & Enforcement
- 2 Complete Streets
- 3 Design Guidelines Enhancing Safety
- 4 Transportation Safety Plans
- 5 Transportation Safety Funding
- 6 **Advocacy and Education Programs**
- 7 Capacity Building
- 8 Emergency Response & Incident Management
- 9 Equity
- 10 Work Zone Safety



Gateway to Safer Roadways

# Advocacy and Education Programs

Name	Location
Buckle Up/Phone Down Campaign	MO
First Impact Program	MO
AAA Teen Driver Online Courses	MO and IL
Keeping Memories Alive Foundation	Jefferson County
Metro East Teen Driver Safety Days	IL
Bike Month	St. Louis Region

March 2024



# Needs and Opportunities

- 1 Speed and Aggressive Driving
- 2 **Seatbelt Use**
- 3 Helmet Use
- 4 Distracted Driving
- 5 Driver Impairment
- 6 Red Light Running
- 7 Bike/Pedestrian Safety
- 8 Unlicensed and Uninsured Drivers
- 9 Roadway Departure



Safe System Approach Principle	Recommendation
Safe Road Users	<ul style="list-style-type: none"> <li>• Education/Outreach Programs</li> <li>• Primary Seatbelt Law in MO</li> </ul>
Safe Vehicles	<ul style="list-style-type: none"> <li>• Seatbelt tracking devices by employers</li> </ul>
Safe Speeds & Enforcement	<ul style="list-style-type: none"> <li>• Awareness campaigns in areas with primary seatbelt laws.</li> </ul>
Equity	<ul style="list-style-type: none"> <li>• Educational programs for violators.</li> <li>• Community awareness to promote seatbelt use in underserved areas.</li> </ul>



# 2024 NOFO (Released 2/21)

## Multiple Deadlines

- April 4, 2024, 5 p.m. (EDT):
  - Planning and Demonstration Grants.
- May 16, 2024, 5 p.m. (EDT):
  - **Sole deadline for Implementation Grants.**
  - Planning and Demonstration Grants.
- August 29, 2024, 5 p.m. (EDT):
  - Planning and Demonstration Grants.

\*\$256,687,000 in FY 2023 carryover funds set aside for Planning and Demonstration Grants

\*May 10, 2024: EWG Application Assistance Workshop

## Planning and Demonstration Grants

- Safety Action Plans
- Supplemental Planning
  - Sub plans (e.g., speed management, vulnerable road users, ADA transition plans, health equity, ITS for safety).
  - Road Safety Audits
  - Stakeholder Engagement
- Demonstration Activities/Small Scale Tests
  - Feasibility studies using quick-build tactics
  - Pilot Studies for Behavioral or Operational Activities (e.g., Messaging for outreach campaign, Speed safety cameras, ITS test deployments).



# SS4A Implementation Grants EWG Plan will Cover the 2025 Funding Cycle

## Infrastructure

- Design and/or construction of roadway improvements
- Implement complete street
- Support development of bike/ped network

## Operational

- Testing deployment of advanced transportation technologies
- Implementing standard and new data collection/analysis strategies

## Behavioral

- Creating safe routes to school
- Promoting adoption of innovative technologies
- Conducting education campaigns
- Implementing speed management strategies



# Deliverables

**Comprehensive Safety  
Action Plan**

**Regional High-Injury  
Networks**

**County Level High-Injury Networks**

St. Louis City

St. Louis  
County

St. Charles  
County

Jefferson  
County

Franklin County

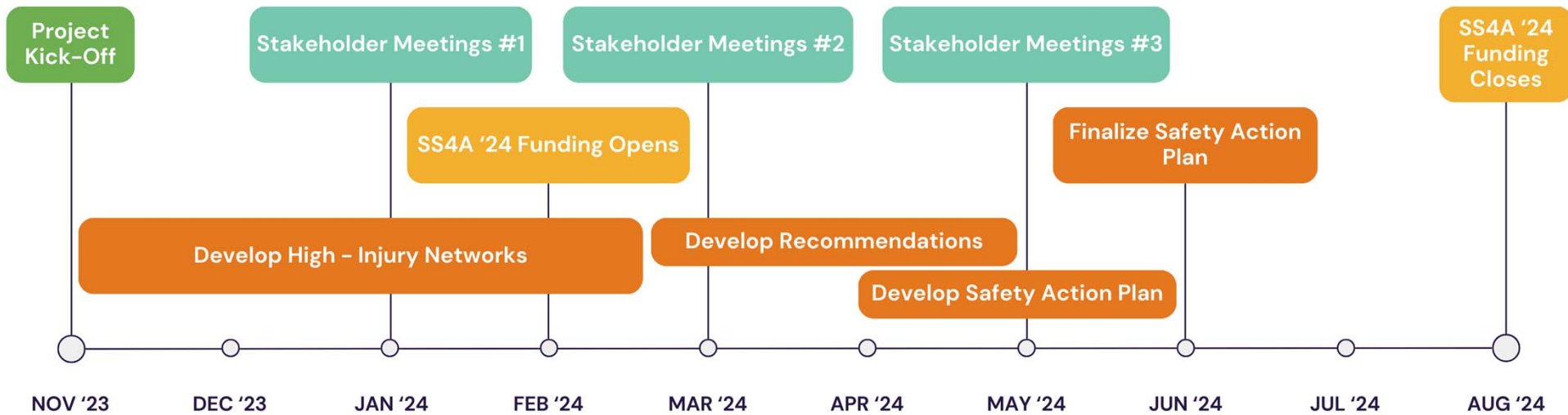
Madison County

St. Clair County

Monroe County



# Project Timeline



we are here



# Next Steps

- Finalizing safety analysis, developing recommendations, and preparing report
- Round 3 Stakeholder Meetings April 29<sup>th</sup> through May 3<sup>rd</sup>
- SS4A Application Workshop
  - Friday May 10<sup>th</sup>, 9:30 am – 11:30 am
- Draft Safety Action Plan presented at May EAC and BOD meetings
- Presented for approval at June EAC and BOD meetings

