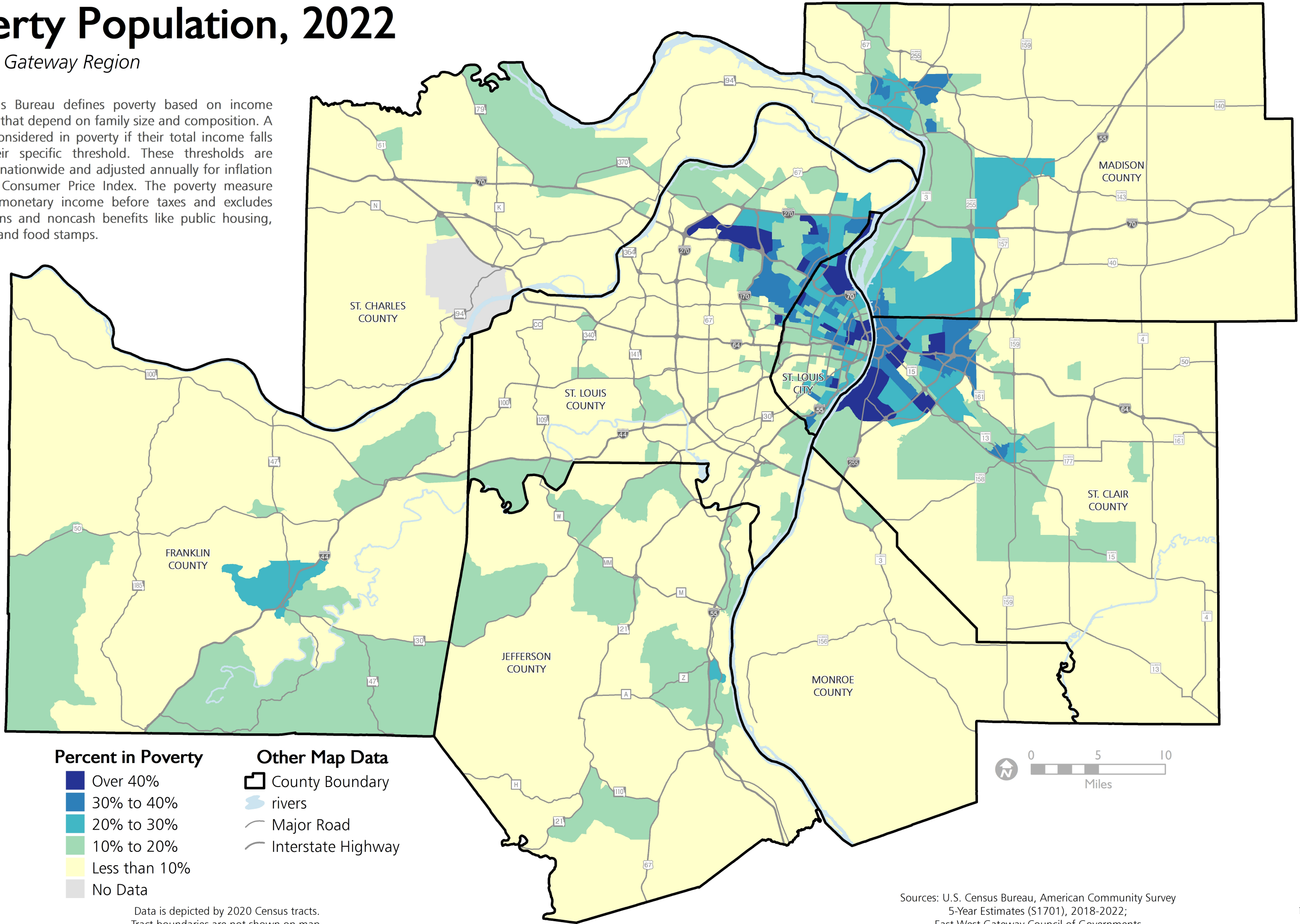


Poverty Population, 2022

East-West Gateway Region

The Census Bureau defines poverty based on income thresholds that depend on family size and composition. A family is considered in poverty if their total income falls below their specific threshold. These thresholds are consistent nationwide and adjusted annually for inflation using the Consumer Price Index. The poverty measure considers monetary income before taxes and excludes capital gains and noncash benefits like public housing, Medicaid, and food stamps.



Data is depicted by 2020 Census tracts. Tract boundaries are not shown on map.



Sources: U.S. Census Bureau, American Community Survey
5-Year Estimates (S1701), 2018-2022;
East-West Gateway Council of Governments