

# Schedule

# Conformity Determination for FY 2025 - 2028 Transportation Improvement Program

Inter Agency Consultation Group - January 2024



**EAST-WEST GATEWAY**  
Council of Governments  
Creating Solutions Across Jurisdictional Boundaries

# Draft Schedule -

Date	Activity
November 2023	EWG released STP-S/CMAQ/CRP applications and hosted 1 virtual & 2 in-person workshops
January 30, 2024	IACG meeting - Begin to talk about schedule and regional emissions analysis IACG meetings in March, May, June & August
February 8	Local sponsor projects due and evaluation begins
March 26	IACG meeting - Decision that this is date Conformity Determination begins (closest to when modeling starts); IDOT asked if there will be a regionally significant Jersey County project
April	Partner (MoDOT, IDOT, Metro, MCT) project information starts to be provided
April - June	Preparation for running travel demand and MOVES models are completed, models are run and post-processing takes places - minimum of 6 weeks needed
May	TPC makes recommendations on local projects for inclusion in TIP; information presented to Board of Directors
Late May - Early June	IACG sent list of new projects to be in TIP with air quality classifications and asked for consensus on classifications
June 10 (best case)	Preview Draft for Public Comment AQCD sent to IACG for review
June 18 & 26	Draft for Public Comment AQCD and Draft FY 2025 - 2028 TIP presented to EAC and Board of Directors
June 28 - August 1	Public comment period; specifics to be determined
August	Presented for Approval AQCD document sent to FHWA MO
August 20 & 28	Presented for Approval AQCD and FY 2025 - 2028 TIP presented to EAC and Board of Directors for approval
August 29	Board Approved AQCD and FY 2025 - 2028 TIP transmitted to MoDOT

# Regional Emissions Analysis for Conformity Determination FY 2025 - 2028 Transportation Improvement Program

Inter Agency Consultation Group - January 2024



**EAST-WEST GATEWAY**  
Council of Governments  
Creating Solutions Across Jurisdictional Boundaries

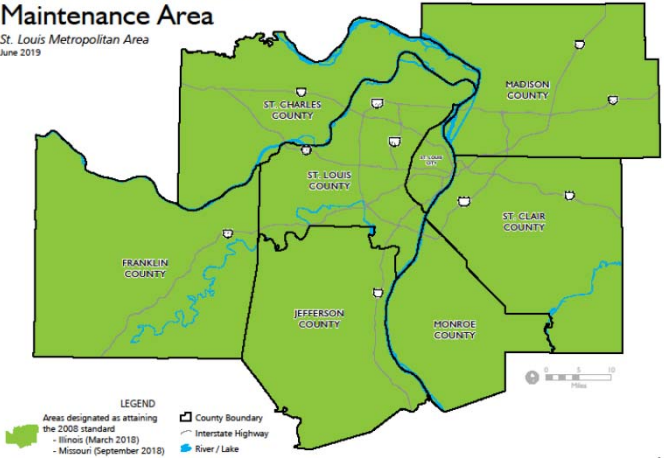


# Conformity to be Performed for -

- ▶ 2008 Ozone Standard - Maintenance Area

## 2008 Ozone Standard Maintenance Area

St. Louis Metropolitan Area  
June 2019



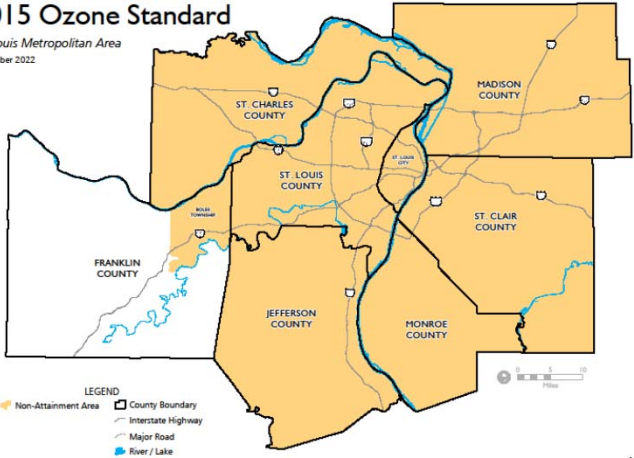
Source: East-West Gateway Council of Governments



- ▶ 2015 Ozone Standard - Nonattainment Area

## Non-Attainment Area 2015 Ozone Standard

St. Louis Metropolitan Area  
November 2022



Source: East-West Gateway Council of Governments



For FY 2025 - 2028 TIP

# Draft - 2008 Ozone Standard Regional Emissions Analysis

MISSOURI - 5 County Maintenance Area (US tons per day)				
Analysis Years	Volatile Organic Compounds (VOC)		Oxides of Nitrogen (NO <sub>x</sub> )	
	Action	2015 Budget	Action	2015 Budget
2025		32.70		76.70
	Action	2030 Budget	Action	2030 Budget
2030		22.00		40.00
2035		22.00		40.00
2045		22.00		40.00
2050		22.00		40.00

ILLINOIS - 3 County Maintenance Area (US tons per day)				
Analysis Years	Volatile Organic Compounds (VOC)		Oxides of Nitrogen (NO <sub>x</sub> )	
	Action	2025 Budget	Action	2025 Budget
2025		5.68		15.22
	Action	2030 Budget	Action	2030 Budget
2030		9.05		16.68
2035		9.05		16.68
2045		9.05		16.68
2050		9.05		16.68

2050 - Horizon year for Connected 2050



For FY 2025 - 2028 TIP

# Draft - 2015 Ozone Standard Regional Emissions Analysis

MISSOURI - 4 County & 1 Township Nonattainment Area (US tons per day)				
Analysis Years	Volatile Organic Compounds (VOC)		Oxides of Nitrogen (NO <sub>x</sub> )	
	Action	2015 Budget	Action	2015 Budget
2025		32.70		76.70
	Action	2030 Budget	Action	2030 Budget
2030		22.00		40.00
2035		22.00		40.00
2045		22.00		40.00
2050		22.00		40.00

For Missouri will not adjust the budgets to represent the smaller nonattainment area

ILLINOIS - 3 County Nonattainment Area (US tons per day)				
Analysis Years	Volatile Organic Compounds (VOC)		Oxides of Nitrogen (NO <sub>x</sub> )	
	Action	2025 Budget	Action	2025 Budget
2025		5.68		15.22
	Action	2030 Budget	Action	2030 Budget
2030		9.05		16.68
2035		9.05		16.68
2045		9.05		16.68
2050		9.05		16.68

2050 - Horizon year for Connected 2050

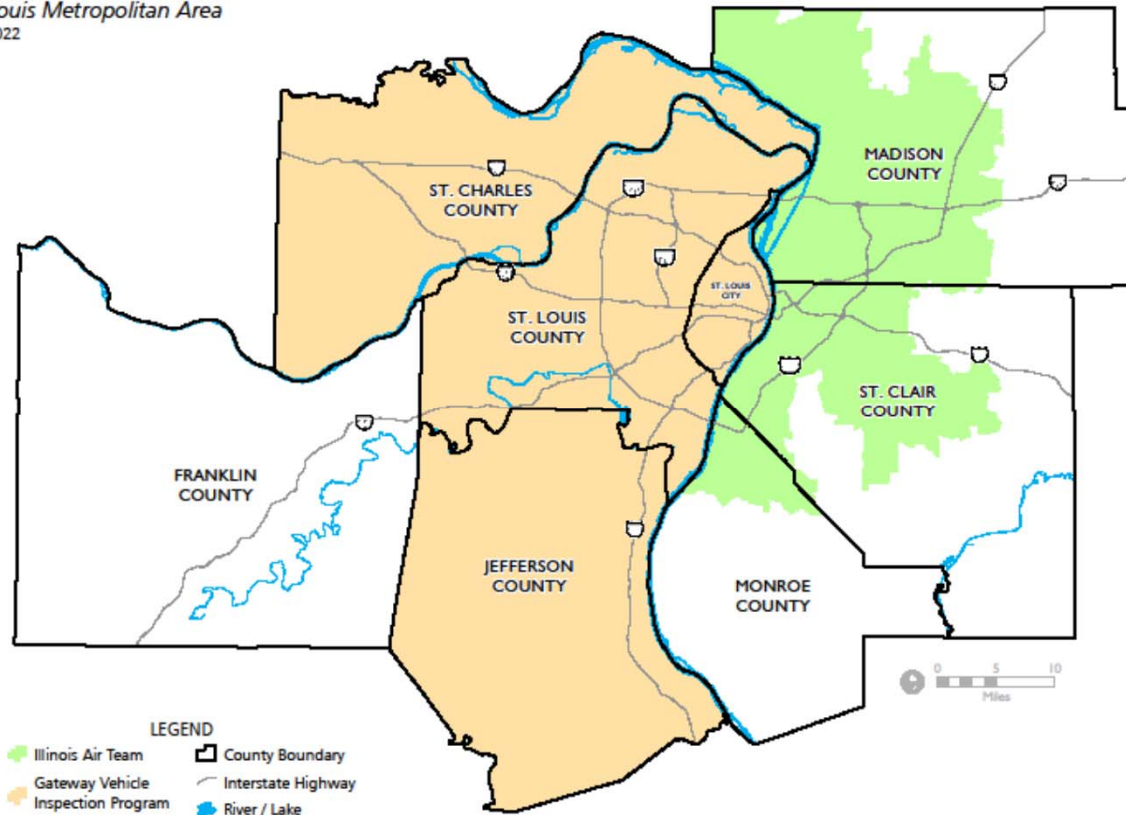


**EAST-WEST GATEWAY**  
Council of Governments

Creating Solutions Across Jurisdictional Boundaries

# Vehicle Emissions Testing Programs

St. Louis Metropolitan Area  
July 2022



Source: East-West Gateway Council of Governments



Remember - there have to be separate MOVES runs for the areas in I/M program and out of I/M program



# Proposed Foreword to CO or PM2.5 “Hot-Spot” Analysis Considerations for Project Sponsors

Inter Agency Consultation Group - January 2024



**EAST-WEST GATEWAY**  
Council of Governments  
Creating Solutions Across Jurisdictional Boundaries



# Background

- ▶ This 2013 document identified things a project sponsor should look at in order to determine if a “hot-spot” analysis is needed as part of project-level conformity analysis for a project located in CO and PM<sub>2.5</sub> maintenance and/or nonattainment areas
- ▶ Then
  - ▶ Region was nonattainment for 1997 PM<sub>2.5</sub> standard
  - ▶ City of St. Louis and portion of St. Louis County were classified as limited maintenance area for CO standard
- ▶ Now
  - ▶ Missouri counties (2018) and Illinois counties (2019) have been redesignated to attainment for 1997 PM<sub>2.5</sub> standard
  - ▶ 20-year CO maintenance period for City of St. Louis and portion of St. Louis County ended in 2019



# What this Means & What's Next

- ▶ According to EPA's Fine Particulate Matter (PM<sub>2.5</sub>) National Ambient Air Quality Standards: State Implementation Plan Requirements: Final Rule (2016)
  - ▶ When an area is redesignated to attainment for the 1997 PM<sub>2.5</sub> standard, that standard is revoked, area is considered "maintenance (standard revoked)" and;
  - ▶ Conformity requirements no longer required at project ("Hot-Spot"), TIP and Plan level
- ▶ 2019 was the end of the 20-year maintenance plan for CO
  - ▶ Project level CO "Hot-Spot" conformity analysis not required
- ▶ Propose keeping 2013 document and adding foreword describing these changes
  - ▶ Document might be of use if, in the future, there is a revised PM<sub>2.5</sub> standard and there are different designations for the region

