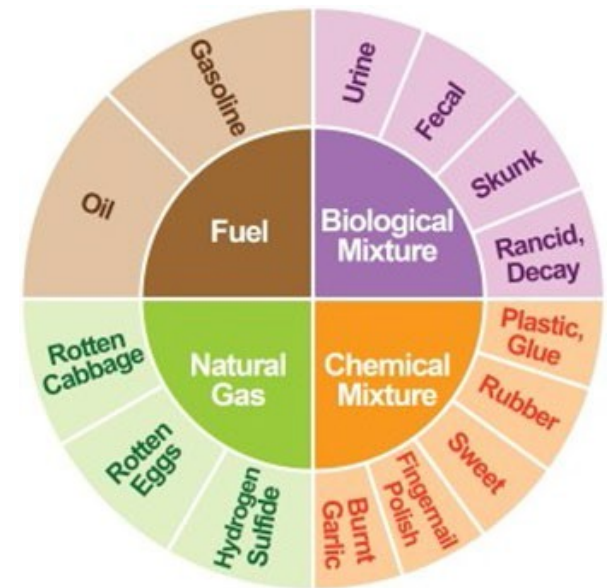


# Reporting Odors in Your Community

- **What are you smelling?**  
Use the odor wheel to help describe the odor.
- **How long has the smell been happening?**  
Hours, days, weeks, etc.
- **How strong is the smell?**  
Describe the intensity of the smell –  
weak, moderate, strong, or very strong.
- **What is the location of the smell?**  
Address or area of St. Louis where you experienced the odor.



Missouri Dept. of Natural Resources - <https://dnr.mo.gov/reporting/environmental-concern>

Environmental Protection Agency - <https://echo.epa.gov/report-environmental-violations>



# Region 7 St. Louis Odo Complaint Investigation Meeting

---

JOE TERRIQUEZ

ENFORCEMENT AND COMPLIANCE ASSURANCE DIVISION, AIR BRANCH

OCTOBER 25, 2023

A solid green horizontal bar spans the width of the slide at the bottom.



# Overview

---

## Purpose/Objective

- Discuss the purpose of the screening work conducted in St. Louis and next steps.

## Agenda

- What does EPA regulate?
- What are the Missouri Department of Natural Resources (MoDNR) odor requirements?
- Why St. Louis?
- What are the regulated sources in St. Louis?
- What is the GMAP?
- Where in St. Louis?
- What is next?
- What can you do to help?
- Questions?



# Key Takeaways

---

- The EPA conducted this effort in response to complaints of odors in the community.
- The State has odor control regulatory authority.
- The data collected by the EPA can be used for screening purposes only and does not indicate a violation of a permit, operating standard, National Ambient Air Quality Standard, or relate to a risk-based health standard.
- The EPA is conducting this meeting to update the community on its efforts.
- The EPA has completed the field work portion of its investigation.
- The EPA cannot discuss potential or ongoing enforcement actions.



# What Does EPA Regulate?

---

## Clean Air Act

- The Clean Air Act (CAA) is the **federal law** that regulates air emissions from stationary and mobile sources to protect human health and the environment.
- Does not regulate odors.

## What are potential sources of air pollution?

- Sources of air pollution can include factories, refineries, boilers, power plants, dry cleaners, gas stations and many more. The Clean Air Act directs EPA to control these emissions by developing and implementing standards and guidelines.
- EPA currently has over 300 regulations that apply to stationary sources to address pollutants such as nitrogen oxides, sulfur dioxides, particulate matter, volatile organic compounds, and hazardous air pollutants.

# What are the Missouri Department of Natural Resources Odor Requirements?



## Odor Regulations

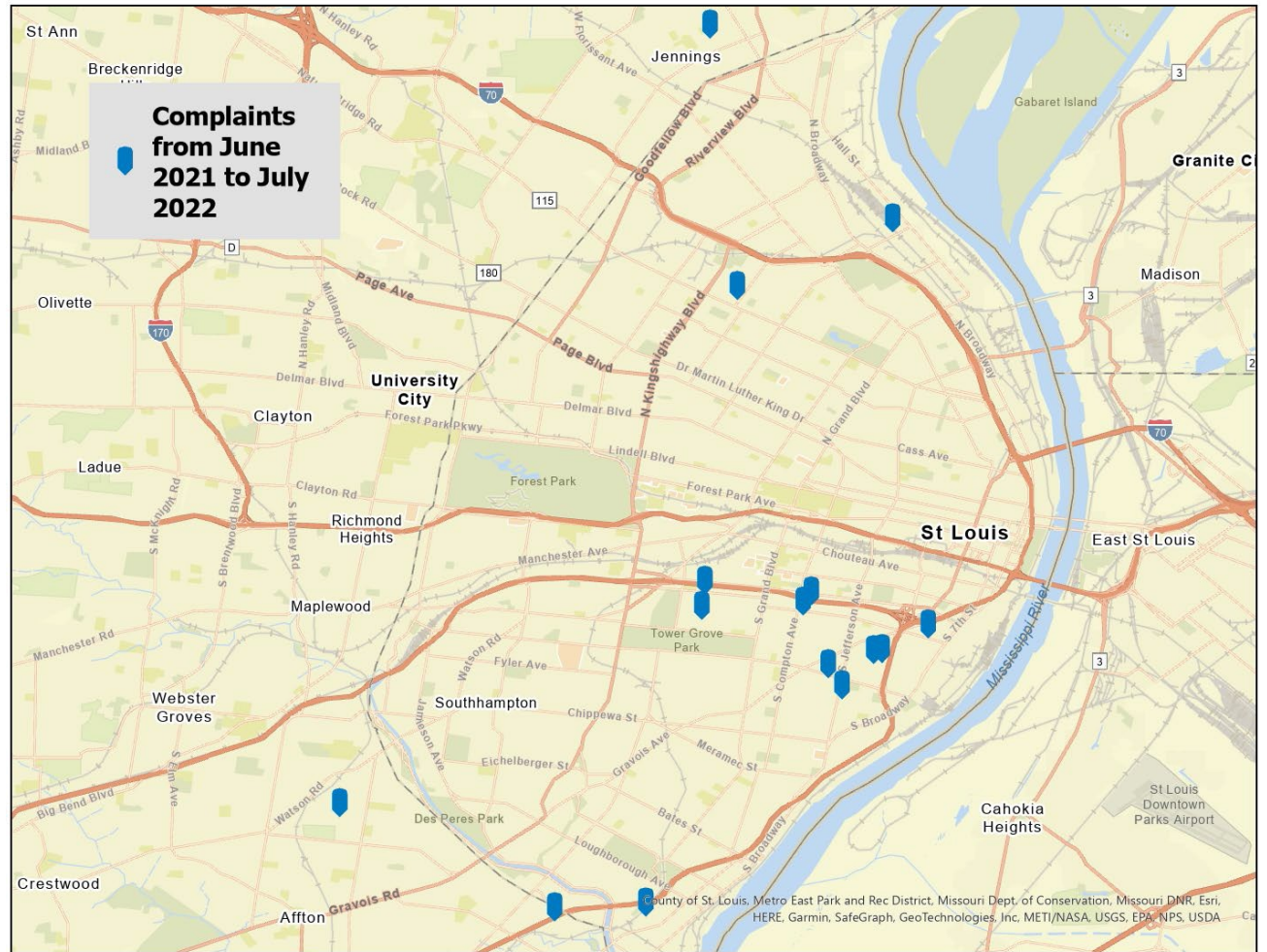
- *Restriction of Emission of Odors*
  - Missouri Secretary of State: Code of State Regulations

Which state that “No person may cause, permit, or allow the emission of odorous matter in concentrations and frequencies or for durations that odor can be perceived when one (1) volume of odorous air is diluted with seven (7) volumes of odor-free air for two (2) separate trials not less than fifteen (15) minutes apart within the period of one (1) hour. This odor evaluation shall be taken at a location outside of the installation’s property boundary.”

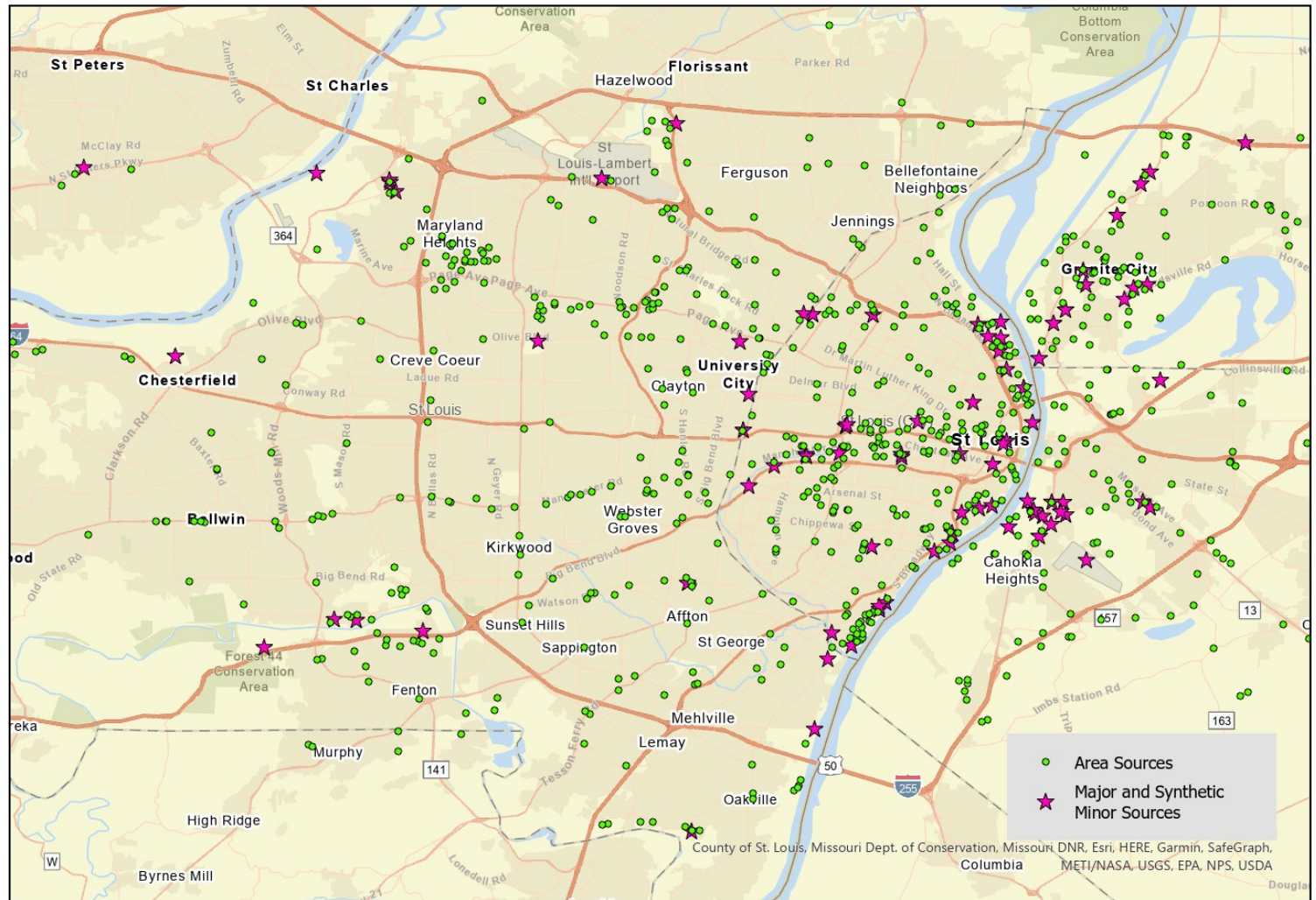
- 10 CSR 10-6.165 can be found online at [www.sos.mo.gov/adrules/csr/csr](http://www.sos.mo.gov/adrules/csr/csr)

# Why St. Louis?

- Complaints
- Communities whose health and the environment may be disproportionately impacted



# Sources in St. Louis Metro Area





# What is the GMAP?

---

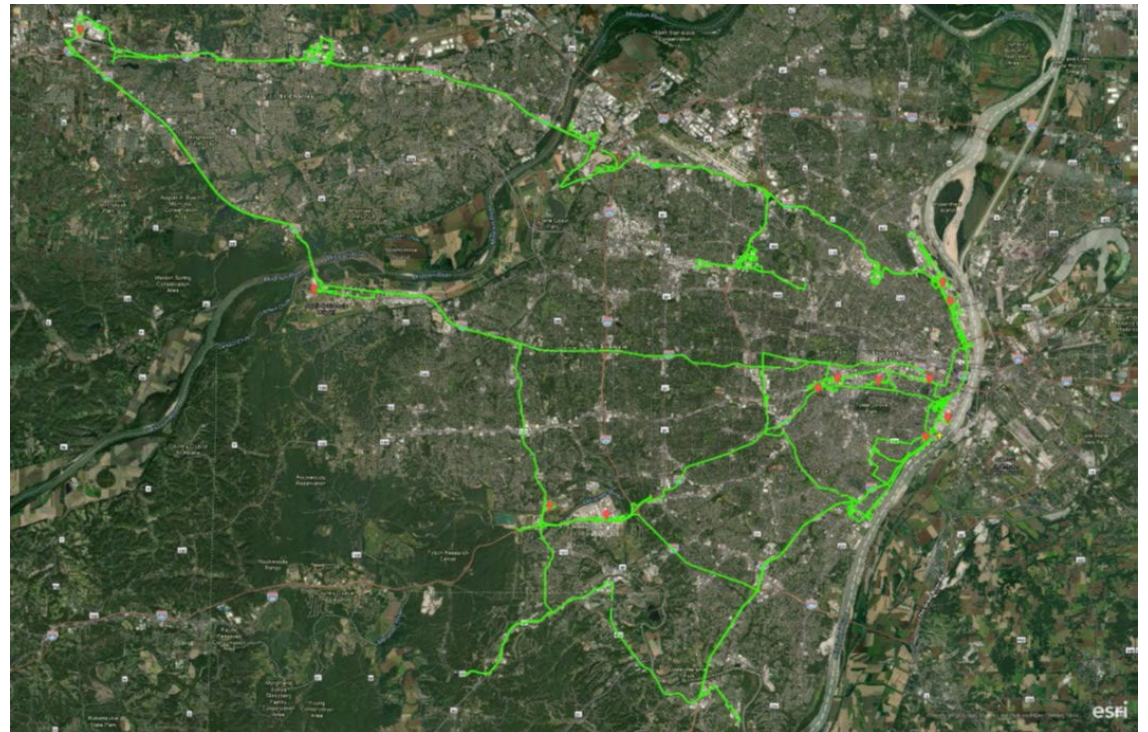
- The National Enforcement Investigations Center's mobile air monitoring vehicle, or GMAP.
- Equipped with analyzers for: methane; benzene, toluene, ethylbenzene, and xylene (BTEX); total volatile organic compounds (VOCs); plus meteorological and global positioning system (GPS) equipment.
- Allows for real-time monitoring and mapping of pollutants while the vehicle is in motion or stationary.
- The real-time monitoring data allows us to screen for "hot spots" and helps us identify locations that need further investigation.



# Where in St. Louis?

---

- The project team observed 44 facilities in total.
- The screening observations were for facility perimeter evaluation.
- There were nighttime operations of the GMAP parked overnight at the U.S. Army Corps of Engineers' property.





# What is Next?

---

## **Inspections related to GMAP Project**

- All completed by Sept. 30, 2023.

## **Review of Inspection Reports**

- An EPA Case Review Officer will review each report and determine if violations were found.
- If violations are found, the EPA will work with the facility to ensure compliance and may assess a penalty.

## **State Coordination**

- Continue to engage with MoDNR.

## **Community Engagement**

- Continue to get input from the community reporting ongoing odor incidents.





# What Can You Do to Help?

## Notify EPA or MoDNR of odors:

- MoDNR

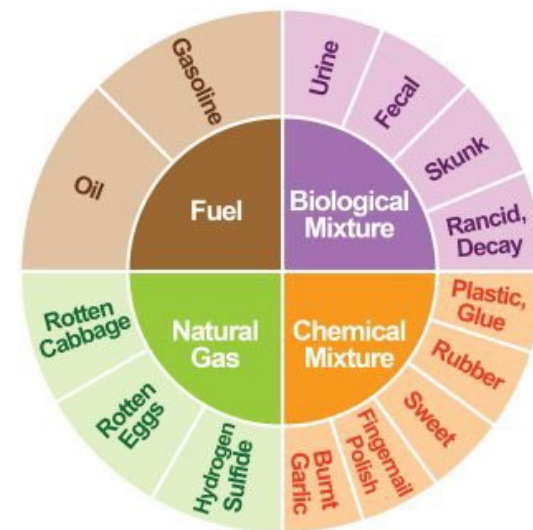
<https://dnr.mo.gov/reporting/environmental-concern>

- EPA

<https://echo.epa.gov/report-environmental-violations>

## Information to provide when reporting odors:

- Description of smell using the handout provided
- Length of time/specific dates and times of when odor occurred
- Intensity of odor
- Address/area of where you experienced the odor





# Key Takeaways

---

- The EPA conducted this effort in response to complaints of odors in the community.
- The State has odor control regulatory authority.
- The data collected by the EPA can be used for screening purposes only and does not indicate a violation of a permit, operating standard, National Ambient Air Quality Standard, or relate to a risk-based health standard.
- The EPA is conducting this meeting to update the community on its efforts.
- The EPA has completed the field work portion of its investigation.
- The EPA cannot discuss potential or ongoing enforcement actions.



# Questions?

---

## **ECAD Air Branch**

Tracey Casburn

913-551-7016

[casburn.tracey@epa.gov](mailto:casburn.tracey@epa.gov)

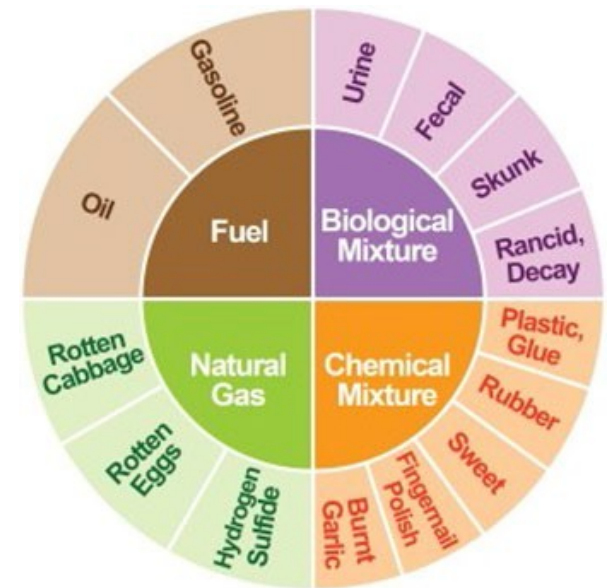
Joe Terriquez

913-551-7105

[terriquez.joe@epa.gov](mailto:terriquez.joe@epa.gov)

# Reporting Odors in Your Community

- **What are you smelling?**  
Use the odor wheel to help describe the odor.
- **How long has the smell been happening?**  
Hours, days, weeks, etc.
- **How strong is the smell?**  
Describe the intensity of the smell –  
weak, moderate, strong, or very strong.
- **What is the location of the smell?**  
Address or area of St. Louis where you experienced the odor.



Missouri Dept. of Natural Resources - <https://dnr.mo.gov/reporting/environmental-concern>

Environmental Protection Agency - <https://echo.epa.gov/report-environmental-violations>