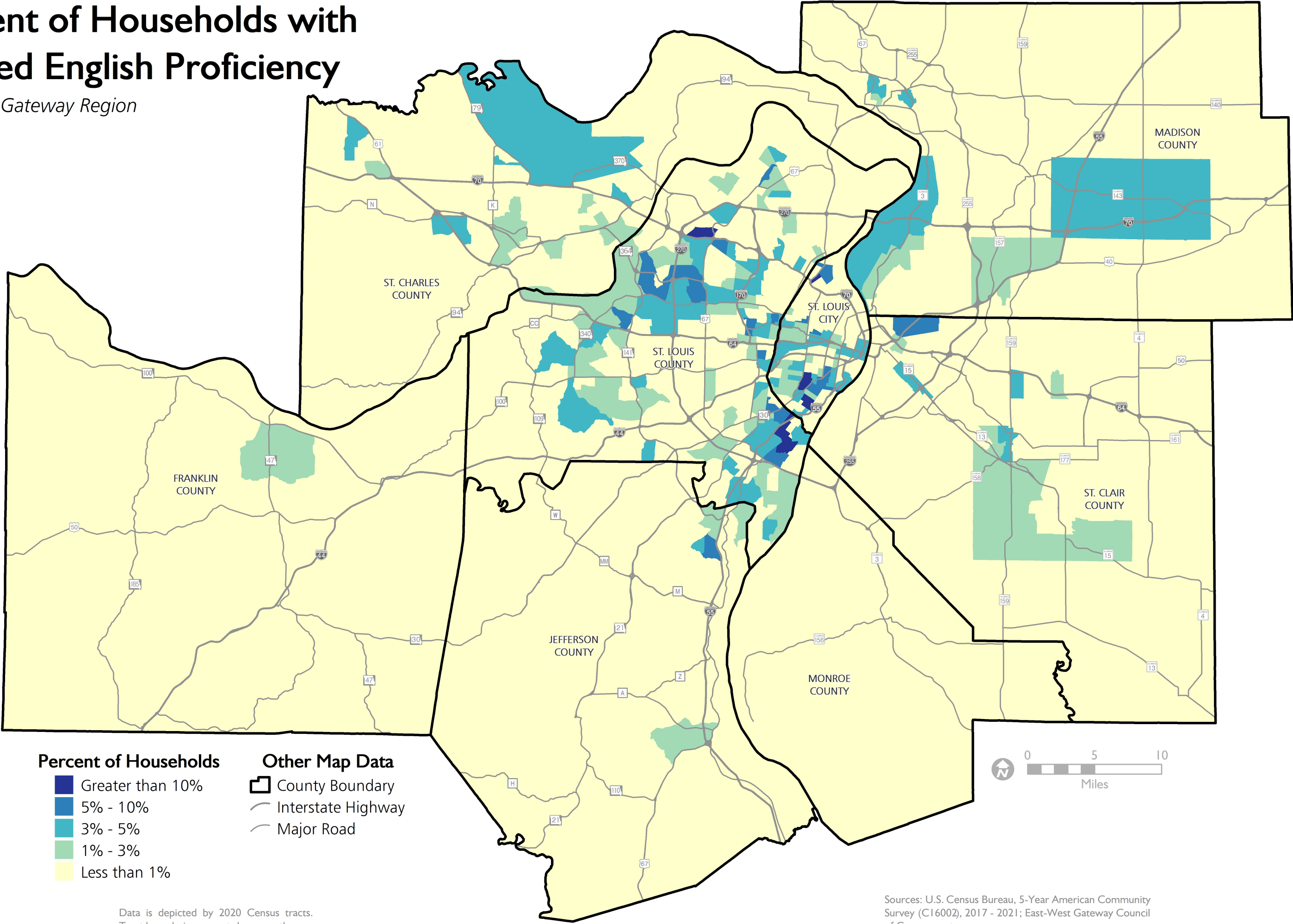


Percent of Households with Limited English Proficiency

East-West Gateway Region



Percent of Households

- Greater than 10%
- 5% - 10%
- 3% - 5%
- 1% - 3%
- Less than 1%

Other Map Data

- County Boundary
- Interstate Highway
- Major Road

Data is depicted by 2020 Census tracts. Tract boundaries are not shown on the map.

Sources: U.S. Census Bureau, 5-Year American Community Survey (C16002), 2017 - 2021; East-West Gateway Council of Governments.