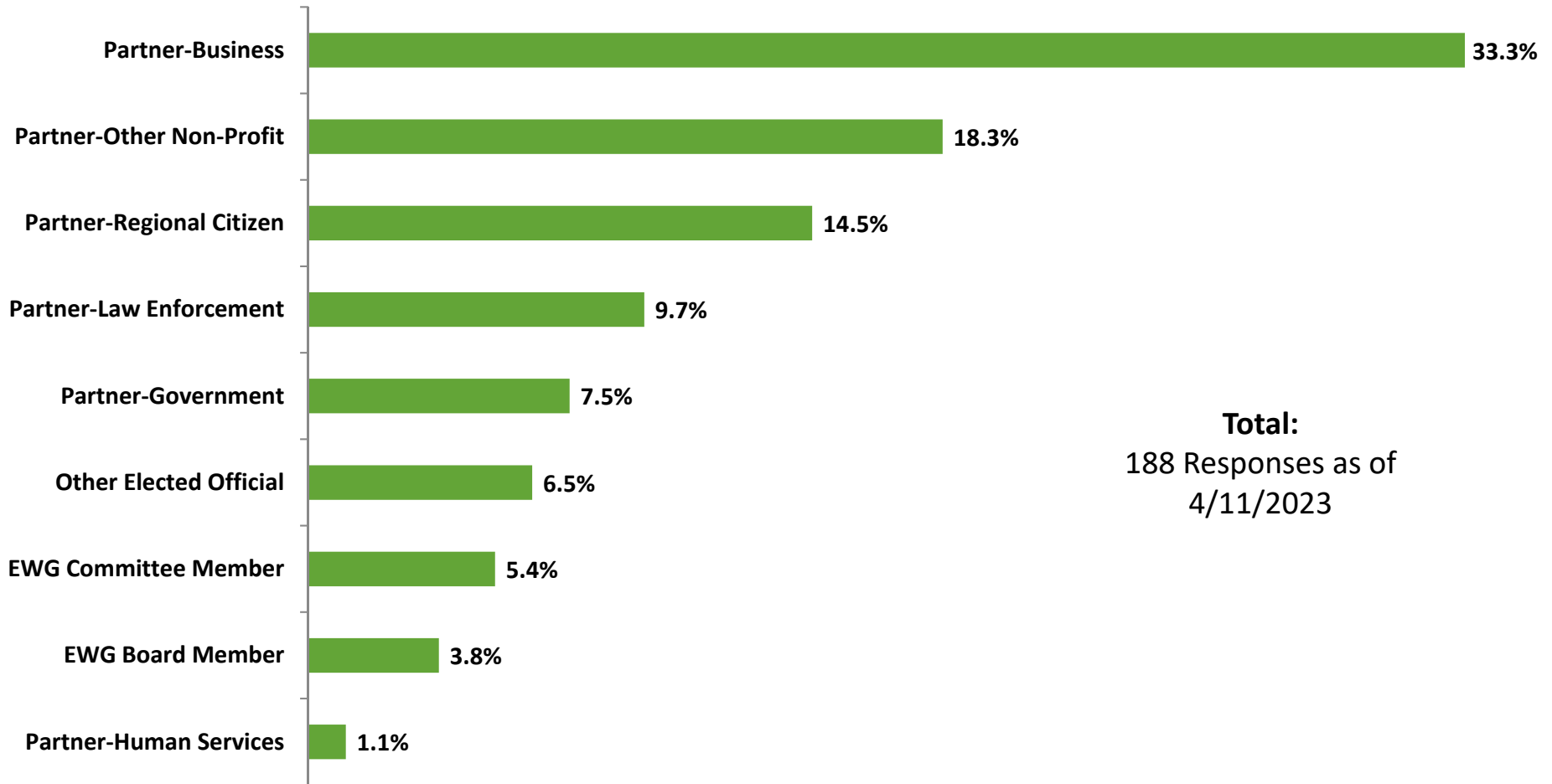


Regional Crime Summit Preliminary Survey Results

Board of Directors
April 26, 2023

Question: Which category best describes your role?

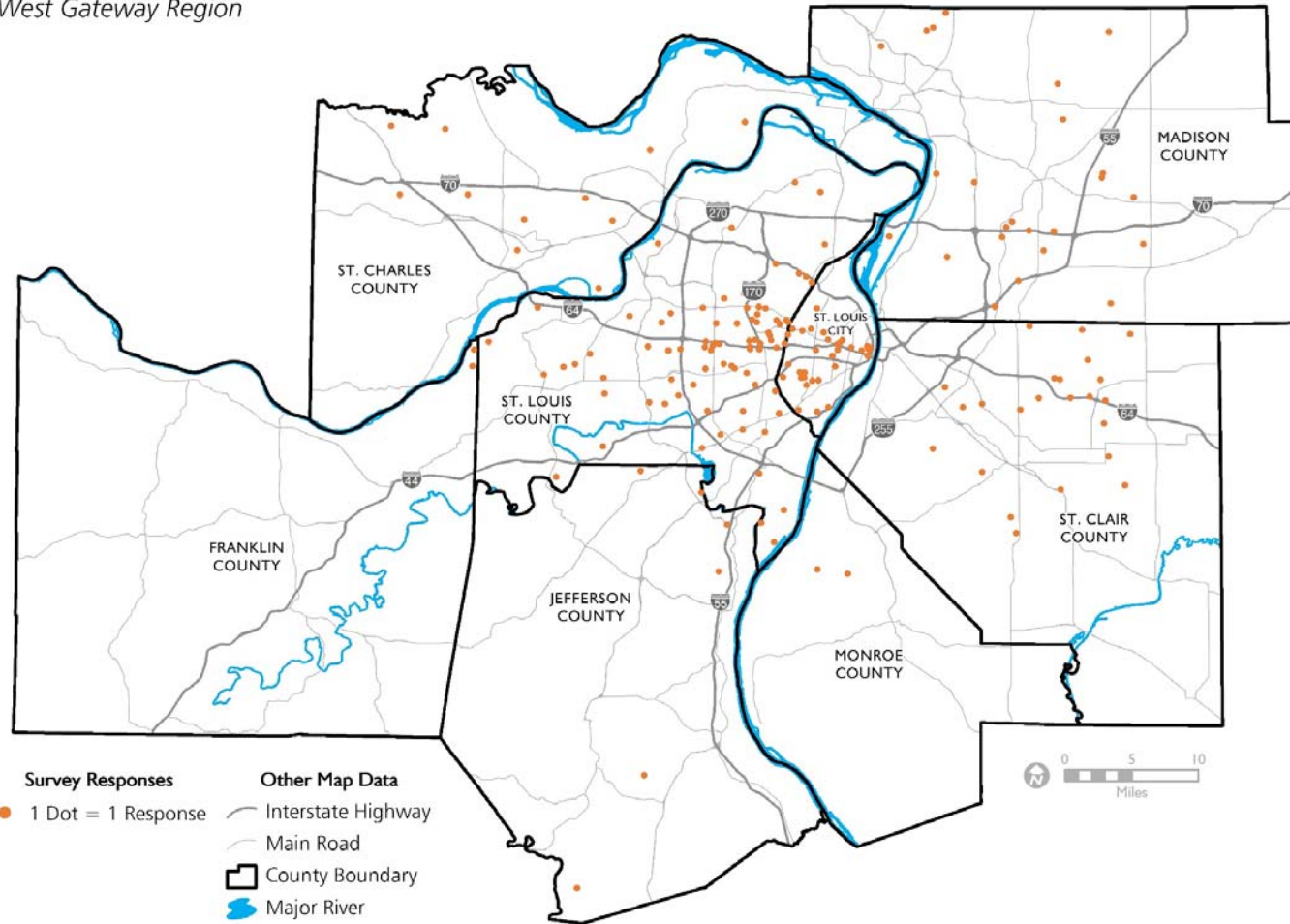


Preliminary Responses by Zip Code

188 Responses

Crime Summit Survey Responses

East-West Gateway Region

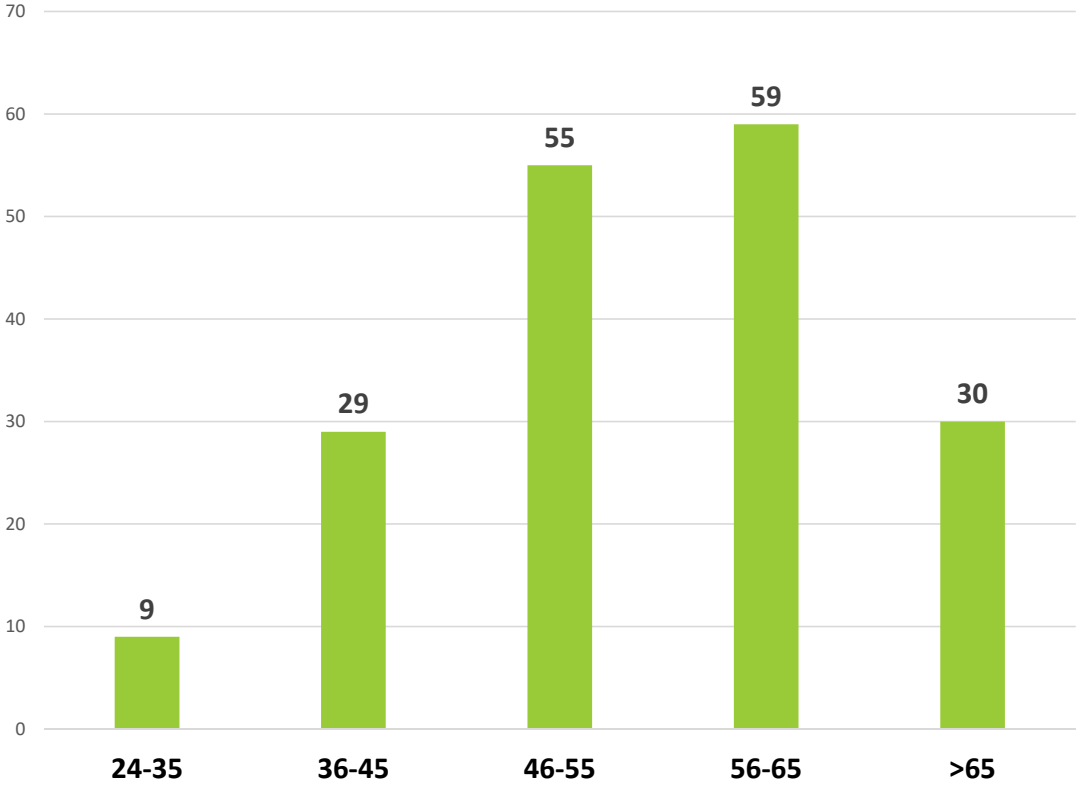


Dots are randomly placed within zip code boundaries.
Zip code boundaries are not shown on the map.

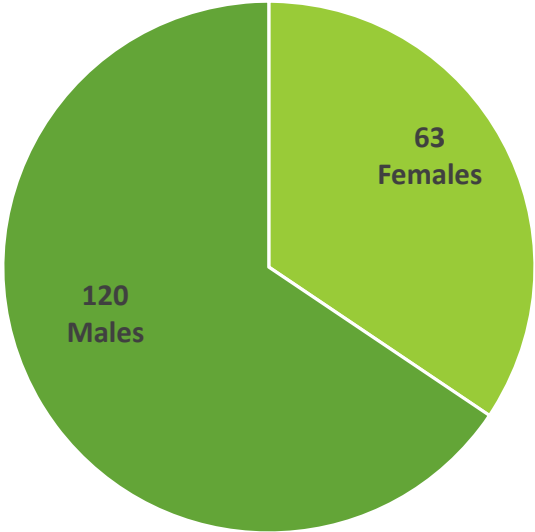
Source: East-West Gateway Council of Governments

Demographics: Number of People who Responded

By Age Group

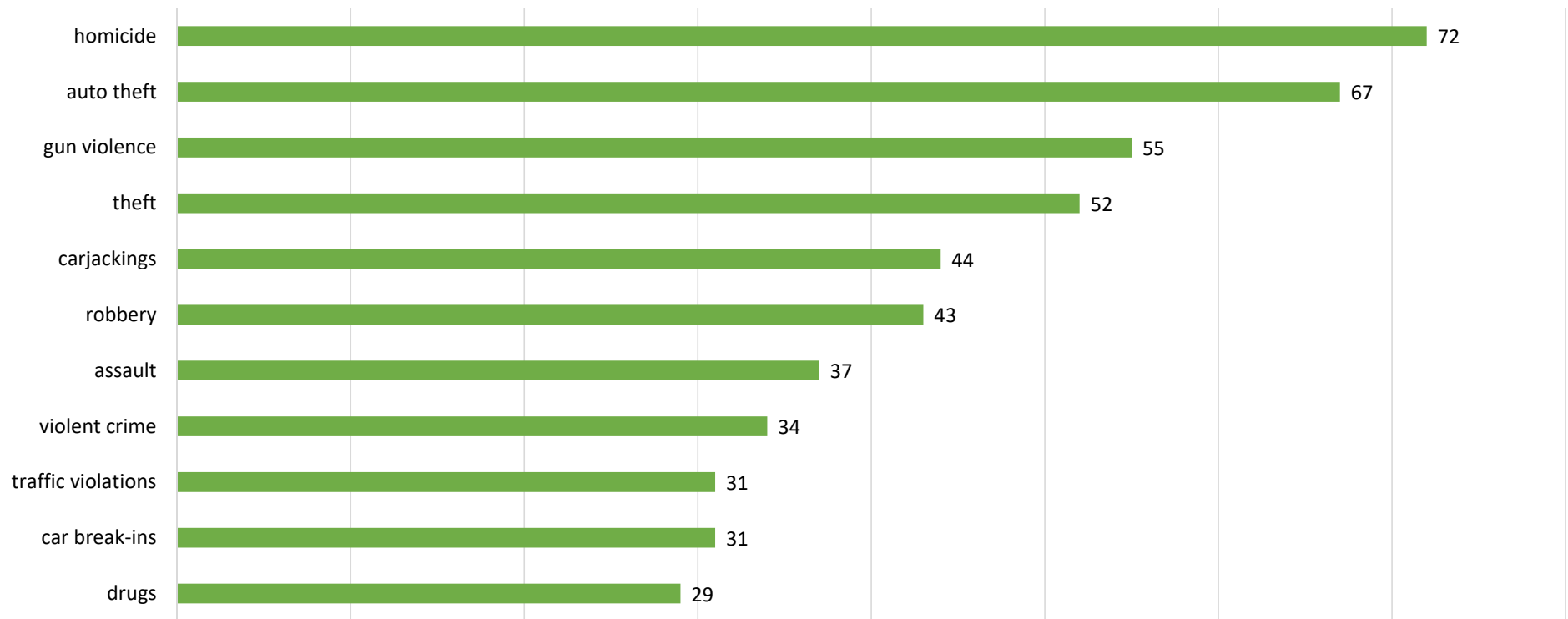


By Sex



Question 5: What do you consider to be the three leading types of crime in the St. Louis region?

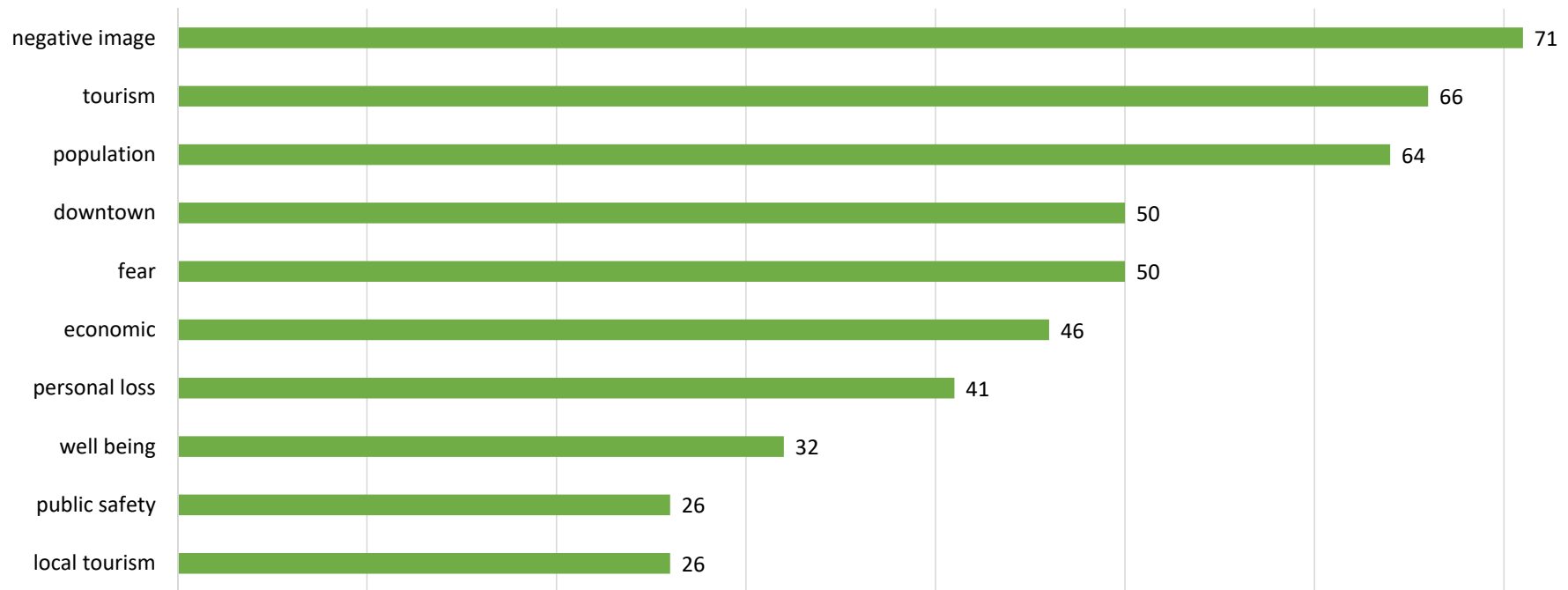
Top 11 Categories (Number of Mentions)



Note: Not a statistically representative population.
Source: East-West Gateway Survey, April 2023

Question 6: What do you consider to be the top three to five effects/impacts crime has on the St. Louis region?

Top 11 Categories (Number of Mentions)



Note: Not a statistically representative population.
Source: East-West Gateway Survey, April 2023

Question:
What three to
five ideas/
solutions do you
think will help
address crime in
the St. Louis
region?

Major Themes: Number of Respondents who Mentioned...

- Enforcement: 137 Respondents (74%)
- Prevention and Social Services: 99 Respondents (53%)
- Mentioned Both: 66 (35%)

Representative Responses:

“More police. Allowing police to do their job. Prosecuting criminals and keeping them in jail away from the good people trying to live their lives.”

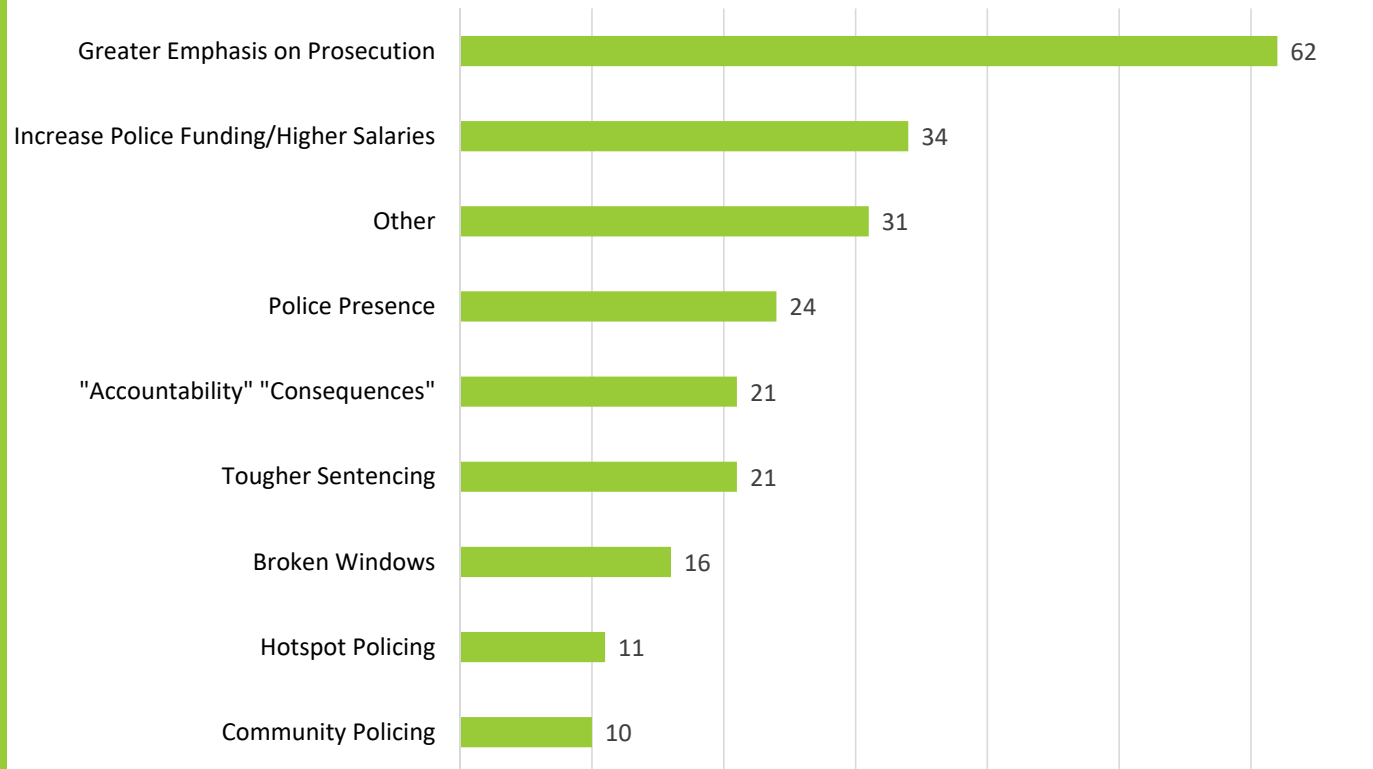
“Utilize technology to find ‘hot spots.’ Hold criminals accountable when they do get arrested.”

“Broken-windows policing, higher police salaries, actual accountability for crime, not releasing juveniles who commit crimes, holding parents accountable for juvenile crime.”

“Prosecute, incarcerate, and build additional jails & prisons if space is needed.”

“Increased enforcement of laws (focused on those that are early indicators) Increased prosecution of those that break laws. Increased utilization of technology to supplement traditional law enforcement efforts.”

Enforcement: Mentioned by 136 Respondents (74%)



Representative Responses:

“Better and varied educational opportunities for students; more organized recreational activities; opening up higher paying jobs; better transportation to jobs; improving neighborhood environments i.e. trash and better quality housing.”

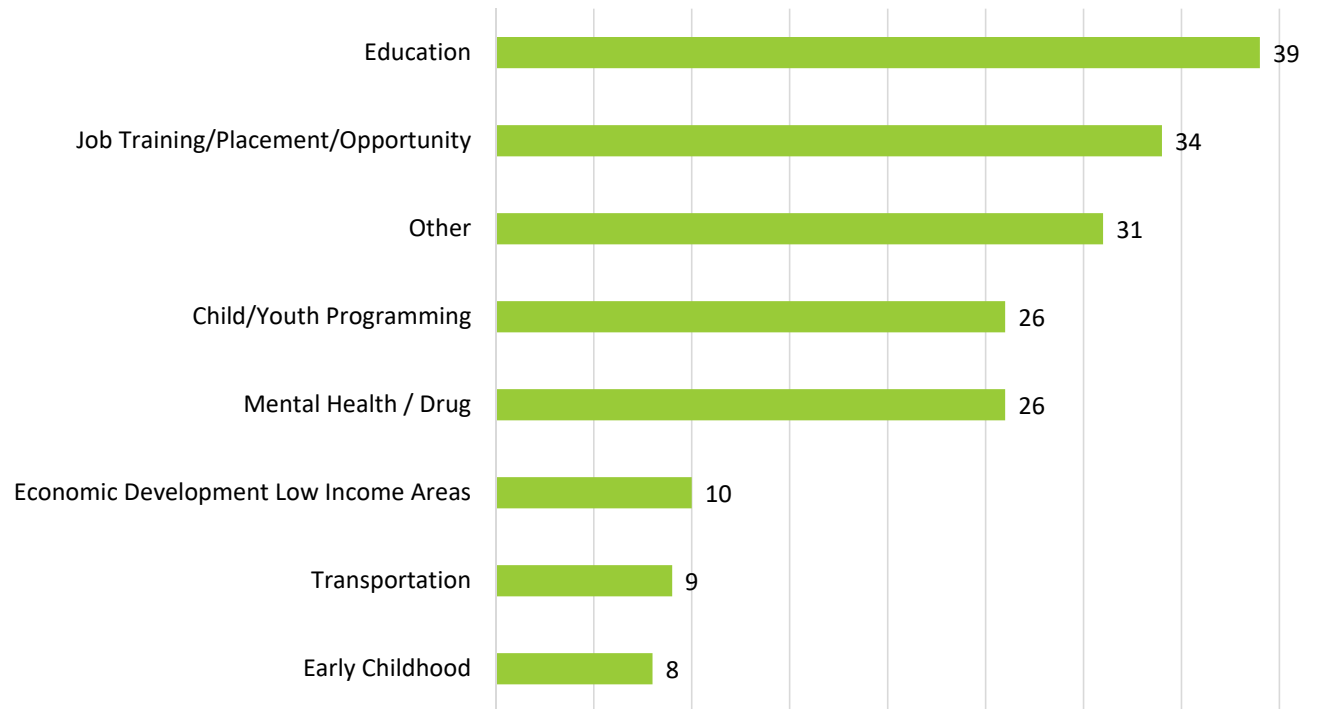
“Create reasonable economic paths out of poverty.”

“Universal preschool, investment in transportation, affordable housing.”

“Invest in North St. Louis communities; provide job training; put money into the schools and after school support; better childcare support; provide mental health programs.”

“Increased equity in relation to underserved communities concerning: Business districts (development and/or rehabilitation of); Financial literacy and business development opportunities; Primary/secondary education system improvements; Workforce development for the trades; Affordable housing and reliable transportation sources.”

Social Services and Prevention: Mentioned by 98 Respondents (53%)



Major Themes

Enforcement AND Prevention: Mentioned by 65 Respondents (35%)

- 48% of “enforcement” responses also mention prevention.
- 66% of “prevention” responses also mention enforcement

“Collaborative educational and job training opportunities for students in high school and post high school. 2) Better mental health care. 3) Better community policing. 4. Better training and funding for the police. 5. Prosecution of people who commit crimes.”

“When suspect commits crime they are sentenced properly by judicial system, larger police presence (not defunded), Drug treatment facilities, more prosecutors and public defenders.”

“There must be consequences for committing crimes-we need to prosecute. Continue to address areas of poverty with economic development-get people to jobs. Police strike forces focusing on the areas where there is the highest incidence of crime.”

“More funding for police and public safety, investment in youth programs to keep kids out of gangs, investment in early childhood education and other programs.”

“Enforcement of laws, more resources for mental illness and homelessness.”

“More well-compensated police on the street, innovative social programs to engage youth.”

“1) Consolidate the police departments and address regionally. Use resources more efficiently. Deploy more resources in the Hotspots 2) More resources to prosecution & incarceration. 3) Media campaign on zero tolerance. You do a crime in STL, you do the time in STL! 4) Increase prevention funding. Fund pre-school/afterschool, mental health response programs & drug rehab.”

“Both sides of the yin and yang--punitive enforcement of laws and actual consequences for criminal behavior, but heavy investment in social programs in impoverished areas so another generation isn't lost to crime. It can't be either/or, it has to be both.”

Representative Responses:

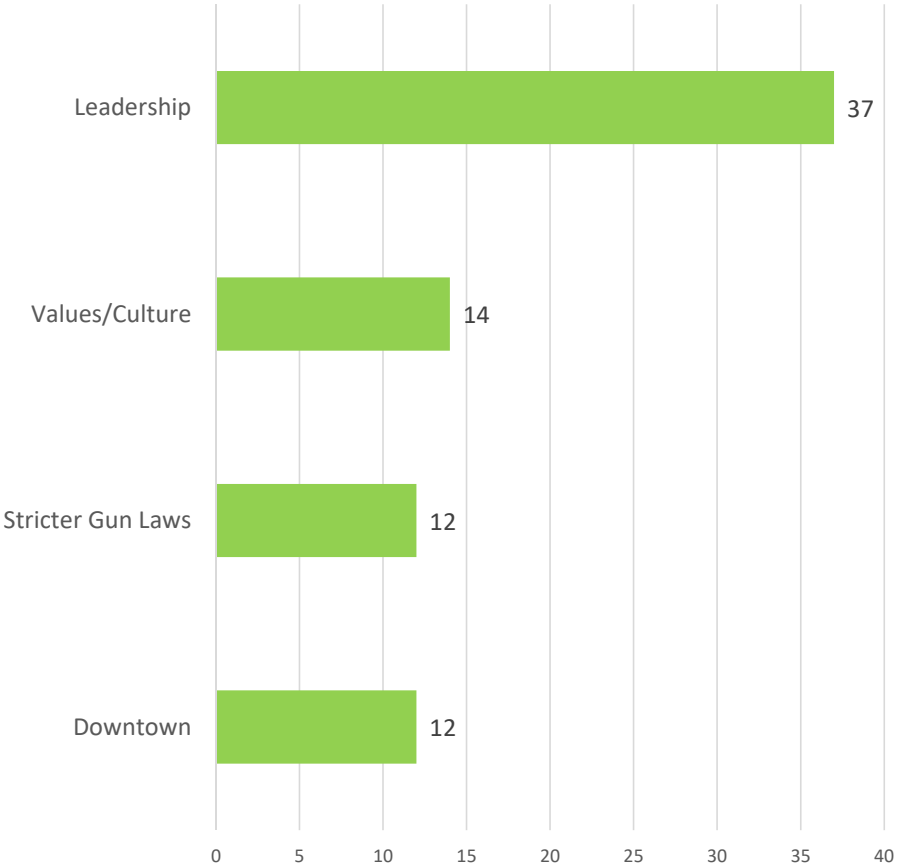
“1. Funnel Resources and energy towards stopping violent crime as a #1 priority. 2. Regional partnership in prosecuting violent crime.”

“Gun violence prevention: Addressing the issue of gun violence is an important part of reducing crime in the St. Louis region. This could involve initiatives such as universal background checks, stricter gun laws, and community-based gun buyback programs.”

“Focus on Church and support our pastors. Let St. Louis live up to its name (SAINT Louis). Get us the moral values this community needs.”

“Address the perception of crime and the actual realities of crime, especially in Downtown. Create visible Downtown shuttles...patrol safe routes throughout Downtown...create more density and light.”

Other Themes





Questions/Discussion