



ST LOUIS REGIONAL FREIGHTWAY

Your Gateway to the World

St. Louis Regional Freightway 2023 Multimodal Priority List and Marketing Overview

Mission and Goals

To Optimize the region's freight transportation network through public and private partnerships.



To produce results that strengthen the **St. Louis region** by increasing job growth through manufacturing and logistics and improving the local economy.

Regional Freight Needs Analysis and Development Plan – maximizing funding opportunities through public-private partnerships and improving multimodal capabilities.

Develop and implement a Marketing Plan – St. Louis region is recognized as a national and global freight hub.



ST LOUIS REGIONAL FREIGHTWAY

Your Gateway to the World

Marketing Update

Raising Awareness Q4 2021 thru Q2 2022

AGRINEWS

Competitiveness of U.S. agriculture industry dependent on infrastructure investment

November 06, 2021 at 6:30 pm CDT



As global production recovers, the Ag Coast of America will become increasingly important. At its core is a 10-mile section of the Mississippi River in the St. Louis region delivering the highest level of grain barge handling anywhere along the Mississippi River, providing the northernmost ice-free port back door access on the Mississippi River to and from the Gulf of Mexico.

ST. LOUIS – The interconnectivity of different transportation modes and need for reliability in both transportation and broadband infrastructure emerged as key ingredients for continued competitiveness of the U.S. agriculture industry during a virtual webinar hosted by the St. Louis

GRAINNET

Competitiveness of U.S. Agriculture Dependent on Infrastructure Investment, Speakers Tell St. Louis AgriBusiness Club Virtual Meeting

Date Posted: Oct 20, 2021



the WATERWAYS JOURNAL
Weekly since 1887

Photo Highlights Of 2021

Bridge Truss Installed From Barges



The \$222 million project to replace the Washburn Bridge across the Mississippi River at St. Louis reached a milestone with the first of three main spans being floated to the site by barge and truck from the plant.

GlobalTrade

December 22nd, 2021 | Written by St. Louis Regional Freightway

PROPOSED CONTAINER-ON-VESSEL SERVICE TO THE ST. LOUIS REGION ADVANCES WITH NEW PARTNERS SIGNING ON FOR THE DEVELOPMENT OF A CONTAINER PORT FACILITY IN JEFFERSON COUNTY, MISSOURI



Through this new collaboration with our partners here in Jefferson County, Hawtex is looking forward to leading the development team for the planned facility on the Mississippi River at Hannibal, Mo., said James Hawley, President of Hawtex Development Corporation, a St. Louis Regional Freightway.

Dec 20, 2021

Container Port Facility in Jefferson County, Missouri, Continues to Develop

New port will be a critical link on the new, all-water, north-south trade lane connecting the Midwest and the St. Louis region to the lower Mississippi River

Commerce

Hawtex Development Corp. is signing on as the lead developer for a new Container-on-Vessel (COV) port facility in Jefferson County, Missouri, to be developed in collaboration with Fred Weber/Riverview Commerce Park LLC and is operating a 500-ft-long, 100-ft-wide vessel canal owned by The Free Barge Co.

SAINT LOUIS CNR

Additional Investment in U.S. Freight Network Needed to Improve Supply Chain Reliability

DECEMBER 16, 2021 ASSOCIATIONS / NEWS

As vehicle travel returns to pre-pandemic levels and federal transportation funding from the Infrastructure Investment and Jobs Act (IIJA) begins to reach states, it will be critical that states make additional investments to improve the efficiency and condition of the nation's freight network to minimize supply chain disruptions, according to a new report released today by TRIP, a Washington, DC based national transportation research nonprofit.

THE TELEGRAPH

Infrastructure bill will enhance St. Louis area freight network


Mary Laminé
Dec 17, 2021

The new federal infrastructure bill recently signed into law paves the way for historic investment in our nation's core infrastructure priorities – including roads and bridges, rail, transit, ports, airports, as well as the electric grid, water systems and broadband.

Construction Equipment Guide.com

VIDEO: Walsh Puts Merchant's Bridge Back On Track

THE NOVEMBER 23, 2021 - MIDWEST EDITION #24
KATHERINE PETRIK - CEO EDITORIAL ASSISTANT



In 2018, Walsh Construction, one of the largest contractors in the United States, began a \$122 million project to rehabilitate the historic Merchant's Bridge — the

Progressive RAILROADING

Rail News: Intermodal

Hawtex to develop container-on-vessel service to St. Louis

A proposed container-on-vessel (COV) service to the St. Louis region is advancing, now that Hawtex Development Corp. has signed on as lead developer for a new COV facility in Jefferson County, Missouri.

12/20/2021

Raising Awareness Q4 2021 thru Q2 2022

Illinois Business Journal

Supply chain woes may leave Midwest shippers with edge, freight authorities say

By Editor | January 13, 2022 | 0

LEADER Publications

State highway board OKs starting work for I-55 improvements

By Steve Taylor | Jan 16, 2022

Plans to build a third lane on I-55 between Pevy and Festus took a step forward on June 2 after the Missouri Highways and Transportation Commission approved the concept as a design-build project.

The commission, which oversees the Missouri Department of Transportation, gave the approval during a meeting at the Jefferson County Administration Center in Hillsboro.

MARINE LINK

Wednesday, March 16, 2022

Recovery, Resilience and Demand Shifts to Drive Inland Waterway Cargo Flows

Barry Parker, Contributor

Barry Parker of Inlet Consulting Ltd provides strategic and tactical support...

March 7, 2022

ST. LOUIS POST-DISPATCH BUSINESS

CONTRIBUTED

2021 ADVANCEMENTS IN THE ST. LOUIS REGION'S FREIGHT NETWORK



A Bi-State Development Enterprise

COLUMBIA MISSOURIAN

'Underutilized' Missouri River barge services poised for federal investment

BY ELI HOFF | Jul 29, 2022

Something different arrived at AGRIServices of Brunswick's terminal on the Missouri River a few weeks ago: a barge load of tapioca from Thailand.

The product from overseas was something crew members had never seen, but the challenge excited Lucy Fletcher, ASB's business development manager.

AJOT AMERICAN JOURNAL OF TRANSPORTATION

Rickenbacker International Airport in Columbus, Ohio has benefited from increased air cargo volumes.

North America's middle ground: New cargo routes to and from the Midwest

The pandemic-fueled supply-chain mess has spurred innovations, greater use of air cargo, Gulf and Great Lakes ports

By Peter Erdman, AJOT

six Asian ports, New Orleans, and Mobile.

SAINT LOUIS CNR

St. Louis Region Positioned to Help Address Ongoing Supply Chain Crisis

January 13, 2022 | 8850104063 | 0

MetroWire MEDIA ST. LOUIS EDITION

[your local source for commercial real estate news]

Friday, March 4, 2022

MWM EVENT RECAP

CRE panel shares '22 forecast at first STL MWM Summit

THE TELEGRAPH theIntelligencer

Regional freight improvements touted

4 of 6 top project directly impact Madison County

By Scott Conroy

EVANSTON, ILL. (The Telegraph) —

South County's The Telegraph

A new section of the Merchants' Bridge is set to take place last year on the Mississippi River. The rail bridge, built in 1889 and is owned by the Terminal Railroad Association, is undergoing a \$322 million rehabilitation expected to be completed in 2023.

CONSTRUCTION FORUM

Home » Discussion » Logistics Fuel Region's Job Growth

Logistics Fuel Region's Job Growth

Posted on 04/12/2022

From The Telegraph: Transportation has always played a major role in the economy of the Metro East and St. Louis.

Combined with modern logistics, it has become a major factor in job creation in the region.

Issues in that industry sector — ranging from infrastructure to worker training — are becoming increasingly more important, as discussed at a Tuesday (Apr. 5) workshop and roundtable by the Madison County Employment and Training Department (MCET) and the St. Clair County Intergovernmental Grants Department.

The program was the second of seven planned this year, according to Tony Fuhrmann, director of MCET.

GlobalTrade

The Authority For US Companies Doing Business Globally

Latest Issue

TRENDS NOW Hiring Supply Chain Talent: What to

DAILY - FEATURES - LOGISTICS - SITE SELECTION - BANKING - DEPARTMENTS - F

OCEAN PORTS: January 11th, 2022 | Written by World Trade Center St. Louis

ST. LOUIS REGION POSITIONED TO HELP ADDRESS ONGOING SUPPLY CHAIN CRISIS

The St. Louis region is positioned to be part of the solution to this crisis, particularly pertaining to congestion at West Coast ports. Image: World Trade Center St. Louis



ST LOUIS REGIONAL FREIGHTWAY

Your Gateway to the World

VIRTUAL

DELIVERING GLOBAL ACCESS

FREIGHTWEEKSTL

ST. LOUIS, MISSOURI MAY 23-27, 2022

VIRTUAL DELIVERING GLOBAL ACCESS
FREIGHTWEEKSTL
ST. LOUIS, MISSOURI MAY 23-27, 2022

- Monday, May 23** Innovation Day: Autonomous Railcars Moving Closer to Reality and Container-On-Vessel Service Coming to the St. Louis Region
- Tuesday, May 24** The St. Louis Region's Role in One of the World's Most Comprehensive Port Networks
- Tuesday, May 24** Ag Coast of America Riverboat Cruise
- Wednesday, May 25** Infrastructure Investments Continue to Strengthen Midwest Ports, Boosting Capacity and Increasing Profitability for the Barge Industry
- Thursday, May 26** Release of the 2023 Priority Projects List
- Thursday, May 26** Partnership Between the St. Louis Region and Kansas City Highlights the importance of Reconstruction and Adding capacity to Missouri's Statewide I-70 corridor
- Friday, May 27** Release of the St. Louis Region's Spring 2022 Industrial Real Estate Market Report
- Friday, May 27** Three Things to Know about Illinois Route 3 in Southwestern Illinois

Media Coverage Highlights FreightWeekSTL 2022

RE journals.
MISSOURI CRE

A reconstructed I-70? Thanks to Kansas City SmartPort and St. Louis Regional Freightway it's closer to becoming a reality

APR 21, 2022



The long-range vision of a reconstructed, higher capacity Interstate-70 between Kansas City and the St. Louis area is coming into sharper focus thanks to a new partnership between Kansas City SmartPort and the St. Louis Regional Freightway.

PODCASTS • TOTAL INFORMATION AM WEEKEND

New vision for I70

11:20 AM • 98.7 FM
KMOX
The Voice of St. Louis

May 28, 2022 • 9 min • Download

See All Episodes >

CATEGORY: News

Mary Lamie talks with Michael Calhoun about the new vision for I70

Illinois Business Journal

Region's role in port network about to get bigger

By Editor | May 25, 2022 | 0



APM Terminals, which serves 10,000 customers worldwide, moves products through 76 terminals in its global network. The St. Louis region will become part of that network with the opening of a planned Container-on-Vessel (COV) port south of St. Louis, by a development team that includes APM Terminals, which will be working to line up shippers to use the new port.

AJOT
American Journal of Transportation

Major infrastructure investments strengthen key Midwest ports

By AJOT | May 26 2022 at 02:26 PM | Ports & Terminals


More than a half a billion dollars in recent, current or expected improvements at three Midwestern ports will strengthen these facilities and reinforce their important roles in the global freight network. The significant investments at Port KC, America's Central Port, and Kaskaskia Regional Port District, along with new infrastructure funding recently secured, will spur an increase in barge services and deliver cost efficiencies that drive profitability for the industry. Port KC is located on the Missouri River. America's Central Port is on the Mississippi River and the Kaskaskia Regional Port District serves both the Mississippi and Kaskaskia Rivers.

Republic-Times
Wednesday, September 7, 2022

News Business

Investments strengthen midwest ports

By Republic-Times • June 1, 2022 • 459



More than a half a billion dollars in recent, current or expected improvements at three midwestern ports will strengthen these facilities and reinforce their important roles in the global freight network.

CONSTRUCTION FORUM

Report Reveals Industrial Construction at Historic High in St. Louis Region

Posted on 05/31/2022

GlobalTrade

NEWS June 2nd, 2022 | Written by Tim Jay

MARITIME INDUSTRY BEGINS PREPARATIONS FOR FUTURE LAUNCH OF CONTAINER-ON-VESSEL SERVICE TO THE MIDWEST



New value-added service to the supply chain will offer shippers transit at a lower cost

The collaborative effort to launch the first of its kind patented Container-on-Vessel (COV) service to the Midwest continues to make great progress, with

Media Coverage Highlights FreightWeekSTL 2022

Global Trade

TECHNOLOGY June 4th, 2022 | Written by Tim Jay

LOUIS-BASED TECH START-UP AIMS TO HELP MAKE RAILROADS COMPETITIVE FOR THE NEXT 200 YEARS THROUGH AUTONOMOUS RAILCARS



FreightWeekSTL 2022 kicks-off with session highlighting Intramotev's self-propelled railcar

FreightWeekSTL 2022 kicked off May 23 with Innovation Day, featuring emerging technologies that have the potential to dramatically change the future movement of freight. The opening session highlighted the advancements being made by St. Louis start-up Intramotev Autonomous Rail.

RIVERBENDER.COM

St. Louis-Based Tech Start-Up Aims To Help Make Railroads Competitive For Next 200 Years With Autonomous Railcars

May 23 2022 2:53 PM



ST. LOUIS - FreightWeekSTL 2022 kicked off May 23 with Innovation Day, featuring emerging technologies that have the potential to dramatically change the future movement of freight. The opening session highlighted the

RT&S

May 26, 2022 | Freight

St. Louis Regional Freightway's 2023 priority projects list totals \$3.8 billion

Written by David C. Lester, Managing Editor



The St. Louis Regional Freightway's 2023 Priority Projects List includes 25 projects representing a total investment of more than \$3.8 billion, up from \$2.75 billion last year.



St. Louis Regional Freightway's 2023 Priority Project List Totals \$3.8B

MAY 31, 2022 ASSOCIATIONS / NEWS



The St. Louis Regional Freightway's 2023 Priority Projects List includes 25 projects representing a total investment of more than \$3.8 billion, up from \$2.75 billion last year. More than \$2 billion of the total covers infrastructure projects that have recently

CropLife

Union Pacific Railroad Continues to Adapt and Invest to Keep Freight Moving

By CropLife Staff | May 26, 2022



An unprecedented disruption in the global supply chain due to the COVID-19 pandemic is still having a major impact on many U.S. industries. Freight rail has had to adapt daily over the last two years to keep goods moving, and Union Pacific Railroad is taking its lessons learned, investing in adding more capacity and committing to moving more intermodal freight. That commitment includes investing \$600 million of capital in 2022 alone as the company works to add more than one million lifts to the intermodal franchise and ramps up hiring so resources match demand. The various ways that Union Pacific continues to adapt and invest to keep freight moving were the focus of one of the panel discussions during FreightWeekSTL 2022.

Republic-Times

News Business

Dupo railyard an example of optionality



By Republic Times June 1, 2022

CONSTRUCTION FORUM

Home > Discussion > Illinois 3 Corridor Generates \$16B, Supports 220,000 Jobs

Illinois 3 Corridor Generates \$16B, Supports 220,000 Jobs



A Bi-State Development Enterprise

The planned container-on-vessel port in Herculesum is in line to receive a \$25 million infusion of state money.

Feature on St. Louis Region in Site Selection Magazine

- Daily releases sent during FreightWeekSTL
- Sparked broad-based interview with Mary Lamie
- Story touched on several key themes from FWSTL
- Reinforced region's role as a global freight and logistics hub



Earned Media Coverage

October 2021 through June 2022

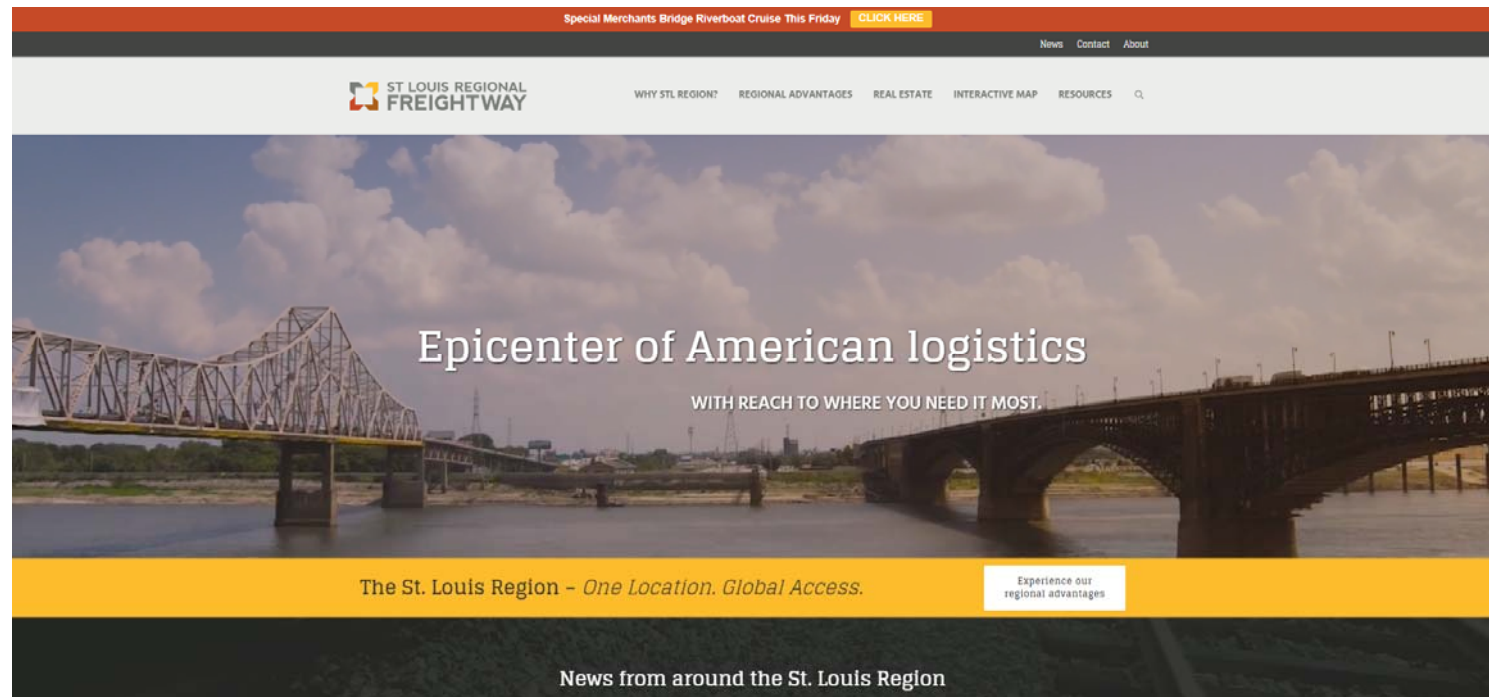
- **Total Placements: 322**
- **Total Reach: 14 Million+**
- **Total Publicity Value: \$1.7M**

FreightWeekSTL 2022 Alone

- **Total Placements: 120**
- **Total Reach: 4 Million**
- **Total Publicity Value: \$600,000**

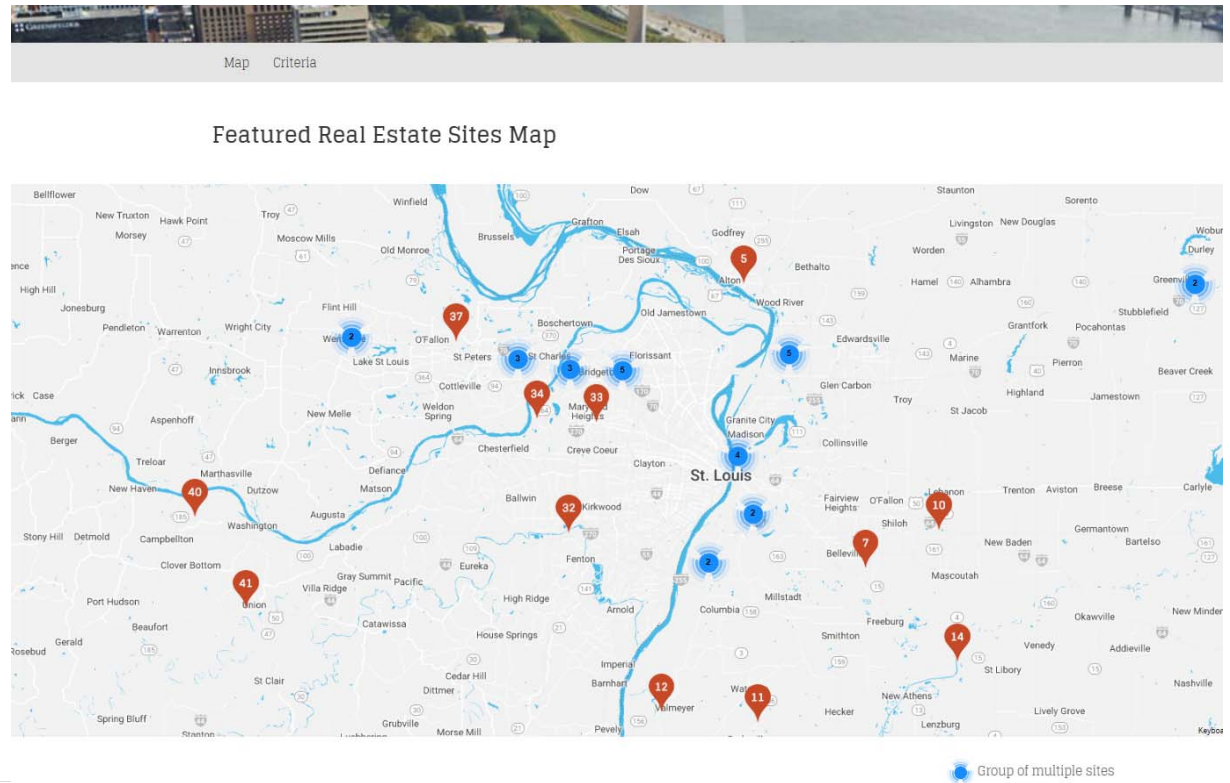
The Freightway.com

Continue to add to website content to reinforce our region's *One Location. Global Access.*



The Freightway.com

- Updates to the featured Real Estate sites map
- More interactive features
- Gathering information on rail-served sites to be added this fall





ST LOUIS REGIONAL FREIGHTWAY

Your Gateway to the World

2023 Priority Project List

2023 Multimodal Project List Process

Feb 7, 2022

Freight Development Committee meeting provides opportunity for public and private sector input from across the region. Projects are vetted with public and private stakeholders from across the region.

March 22 , 2022

Freight Development Committee reconvenes and finalizes the project list.

Early May 2022

Request Freightway Council approval

May 26 , 2022

Release draft project list

Fall 2022

Request E-W Gateway Council of Governments Board approval

2023 Priority Project Criteria Updates for 2023 Priority Project List

- **Economic Impact** – To improve the region’s overall competitiveness (i.e. new business development, job creation, 1st-order economic benefits)
- **Multimodal Impact** - To improve the flexibility, reliability, and connectivity of the region’s freight network (i.e. speed of freight, lowering cost, improved reliability)
- **Efficiency Impact** - To increase the efficient use of the region’s assets
- **Safety in Travel** – To advance safety of the region’s transportation assets
- **Project Readiness**

USDOT Noteworthy Practices

Key Accomplishments

- Improved cross-sector partnerships that increased regional competitiveness for funding to benefit freight mobility and economic development
- Created a list of priority freight projects to help inform regional and state decision makers in their development of transportation improvement programs
- Fostered relationships and consensus building across sectors and jurisdictions leading to improved freight decision-making, project development and funding success.



2023 Freightway Priority Project List

Project-specific and regional freight advocacy efforts

- 2023 Priority Project List includes 25 projects with representing a total investment of \$3.8 billion.
- More than \$2 billion are already funded and under construction or expected to start construction or design within the next few years.
- The list represents the infrastructure needs of the manufacturing and logistics industries and indicates tremendous progress on a range of projects that will strengthen critical roads, bridges, rail infrastructure and port and airport facilities across the bi-state St. Louis region.

2023 PRIORITY FREIGHT PROJECT
 ST LOUIS REGIONAL FREIGHTWAY

Advanced to Construction (Funded)

- Merchants Bridge (TRRA) Replacement over the Mississippi River (MO-IL) \$222M ✓
- I-255/Davis Street Ferry Road Interchange (IL) \$42M
- Union Pacific Railroad Lenox Tower Replacement and Track Realignment (IL) \$19M
- Earth City Access Improvements (MO) \$4M ✓
- Illinois Route 3 Connector between IL Rte 3 and IL Rte 203 (IL) \$81.5M Funded

▪ J.S. McDonnell Connector Access Improvements (MO) \$2.4M ✓

▪ I-64 Improvements from Green Mount Road to Illinois Route 158 (Air Mobility Drive) (IL) \$36M

▪ North Park Access Improvements (MO) \$3M ✓

▪ Illinois Route 158 (Air Mobility Drive) Relocation from Route 161 to Route 177 (IL) \$20M

Partially Programmed for Construction

- North Riverfront Commerce Corridor Improvements (MO) \$34M Partially Funded
- Illinois Route 3 Access Improvements (IL) \$300M Partially Funded
- America's Central Port Intermodal Improvements (IL) \$371.2M Partially Funded
- Kaskaskia Regional Port District Improvements (IL) \$41M Partially Funded

- I-270 Improvements from I-70 (MO) to Illinois Route 157 (MO-IL) \$1.2B
- I-270 from James S. McDonnell Boulevard to Bellefontaine Rd (MO) \$278M Funded
- I-270 from Route 367 (Lewis and Clark Boulevard) to Route H (Riverview Dr) (MO) Not Funded
- I-270 Mississippi River Chain of Rocks Bridge Replacement and 6 lanes from the Mississippi River Bridge to the Chain of Rocks Canal on the Illinois side (MO/IL) \$332M Funded
- I-270 6-lane Preliminary Engineering (IL) \$3M Funded
- I-270 from Illinois Route 3 to East of St. Thomas Road, includes land acquisition & utility relocations (IL) \$78.5M Funded
- Illinois Route 111 at Chain of Rocks Rd, includes construction engineering, land acquisition & utility relocations (IL) \$19M Funded
- I-70 Improvements from Wentzville to Stan Musial Veterans Memorial Bridge (MO) \$500M
- I-70 Outer Roads Improvements from Fairgrounds Road to Cave Springs Road \$62M Funded
- I-70 Interchange Expansion or Improvement Projects \$32M Funded
- I-70 Additional Lane from TR Hughes Boulevard to Bryan Road \$9M Partially Funded
- I-70 Bottleneck Improvements from Wentzville Parkway to Route Z \$39M Funded
- I-70 Improvements from Route 141 to I-170 \$179M (Tier 1 and 2) Not Funded
- I-70 Improvements between Convention Center Boulevard and Missouri Route 370 Not Funded
- I-70/I-64 Interchange Improvements (Concept Development Phase) Not Funded
- I-70 St. Louis City Limit to Benton Street Interchange reconfiguration and safety enhancements \$188M (Tier 2) Not Funded
- I-70 Wentzville Parkway to Warren County capacity to be added \$27.9M (Tier 3) Not Funded
- Partnership between Kansas City and the St. Louis region highlights the importance of reconstructing and adding capacity to Missouri's statewide I-70 corridor (MO Statewide Unfunded Needs?)
- St. Louis Lambert International Airport North Cargo Improvements (MO) \$15.2 M

Concept Development or Planning

- I-255/Fish Lake (Ramsey Road) Interchange (IL) \$27M
- Mississippi River Port Development Projects (MO) \$86.1M
- I-55 Improvements from Route 2 to U.S. Route 67 (MO) \$212M
- Terminal Railroad Association of St. Louis (TRRA) Tunnel-Arch Riverfront Dewatering (MO) \$9.8M
- Terminal Rail Road Association's St. Louis Multi-Modal Freight Yard Expansion at Madison Yard (IL) \$52M
- I-55/70 lane additions from I-255 to I-270 (IL) \$456M

- MidAmerica St. Louis Airport Distribution Improvements (IL) \$45M
- St. Louis Lambert International Airport Access Improvements (MO) \$30.3M
- New Terminal for St. Louis Lambert International Airport Estimated Cost TBD

▪ St. Louis Regional Freightway's highest priority projects

✓ Construction completed

* The level of MoDOT's high priority unfunded transportation needs

2023 Freightway Priority Project List

Merchants Rail Bridge Riverboat Cruise Features Final Truss Installation Highest Priority Project

The St. Louis Regional Freightway hosted a Riverboat Cruise with more than 125 industry leaders and two local schools. Crews worked on final preparations for the installation of the last new truss. The installation of the third and final truss marked one of the last significant milestones in the \$222 million project.

Photo Credit Walsh Construction Trey Cambern Photography



2023 **UPDATES** Freightway Priority Project List

Merchants Rail Bridge



Terminal Railroad Association of St. Louis

Project completed September 2022

Photo Credit Walsh Construction Trey Cambern Photography



Grand Reopening Merchants Bridge – Sept. 15, 2022


- \$222 million project to replace and modernize 133-year-old bridge
- Double track bridge provides reliable, resilient and expanded freight and passenger traffic across the Mississippi River
- Freight Development Committee's #1 Priority
- Public-Private Partnership (90% Private and 10% Federal Funds)

Merchants Bridge Riverboat Cruise August 2022

News Photo: Merchants Bridge gets final span
By | August 30, 2022

Five-year project nears completion

Trains



the **Intelligencer**

Merchants Bridge work nears completion

Top priority transportation projects moving forward


Scott Cassin, Herald Midland
Aug. 28, 2022



The installation of the last of three spans on the Merchant's Bridge, linking the city of Madison and Madison County to St. Louis, signifies the completion of a major piece of the St. Louis region's transportation puzzle.

KMOX
THE WORLD OF ST. LOUIS

Merchants Bridge nears end of \$222M reconstruction to make train transit easier



By Jane Mather
2/2022

Merchants Bridge is nearing the end of a \$222 million reconstruction project — and on Friday, some people got to take a boat to see it up close.

Red Latina

Armadura final subiendo en el nuevo Merchants Bridge



El jueves, las cuadrillas trabajaron para levantar la estructura final del Merchants Bridge y colocarla sobre el río Mississippi. Es una de las últimas piezas del rompecabezas de construcción de años.

"Es un proyecto único en la vida para reconstruir un puente sobre el río Mississippi", dice Eric Fields, ingeniero jefe de la Terminal Railroad Association of St. Louis. a 5 On Your Side

the **WATERWAYS JOURNAL**
Weekly SINCE 1887



BREEDING & MARINE CONSTRUCTION

Final Truss Is Major Milestone For Top St. Louis Bridge Project

SEPTEMBER 2, 2022 • BY DAVID MURRAY

A group of 175 people took a ride on the riverboat Becky Thatcher from the St. Louis riverfront August 26 to see the third and final truss being floated into place before it was placed onto the Merchants Bridge, a railroad bridge that crosses the Mississippi River north of downtown St. Louis, Mo. The group consisted of

ST. LOUIS POST-DISPATCH

Replacement of 132-year-old St. Louis rail bridge nears completion



ST. LOUIS — The long-sought \$222 million replacement of the circa 1890 Merchants Bridge, one of two local spans used by railroads to cross the Mississippi River, is

FOX 2 now

MISSOURI

The Merchants Bridge is undergoing reconstruction

by Zuzak Gals
Posted Aug 29, 2022 | 10:51 PM CDT
Updated Aug 30, 2022 | 10:14 PM CDT


DAN SIEVE
SENIOR PROJECT MANAGER WILSON CONSTRUCTION

RT&S

August 30, 2022 | BridgeConstruction

Watch: Crews remove third segment of Merchants Bridge; final installation now complete

Written by Bill Wilson, Editor-in-Chief



The \$222 million project to replace the Merchants Bridge that links Missouri and Illinois near downtown St. Louis is nearing completion, and the St. Louis Regional Freightway gave invited

RAILWAY AGE

August 30, 2022 | M/W

Merchants Bridge Reconstruction Final Truss In Place

Written by William C. Vantuono, Editor-in-Chief




The \$222 million project to replace the St. Louis Regional Freightway Merchants Bridge that links Missouri and Illinois near downtown St. Louis is nearing completion, as the third and final new steel bridge truss has been floated into place.

LOCAL NEWS

5 ON YOUR SIDE

Final truss going up on new Merchants Bridge

On Thursday, crews worked to lift the final truss of the Merchants Bridge into place over the Mississippi River.



Author: Tracy Hinson (KSOQ)
Published: 5:47 PM CDT August 26, 2022
Updated: 6:32 PM CDT August 26, 2022

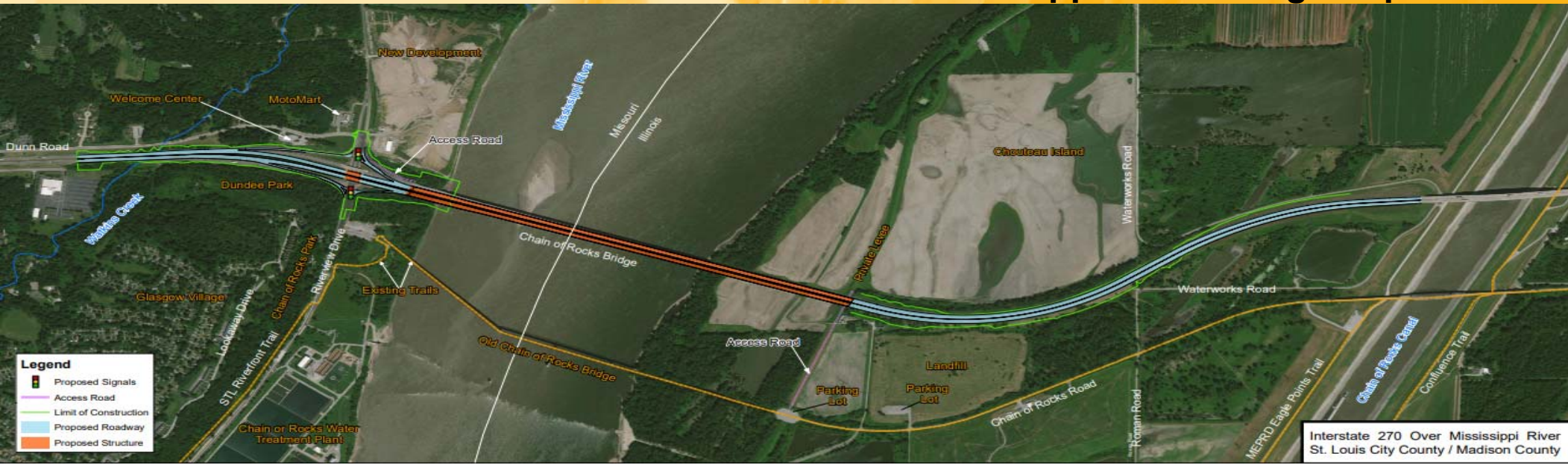
ST. LOUIS — On Thursday, crews worked to lift the final truss of the Merchants Bridge into place over the Mississippi River. It's one of the last pieces of the years-long construction puzzle.



A Bi-State Development Enterprise

2023 **UPDATES** Freightway Priority Project List

I-270 over Mississippi River Bridge Replacement

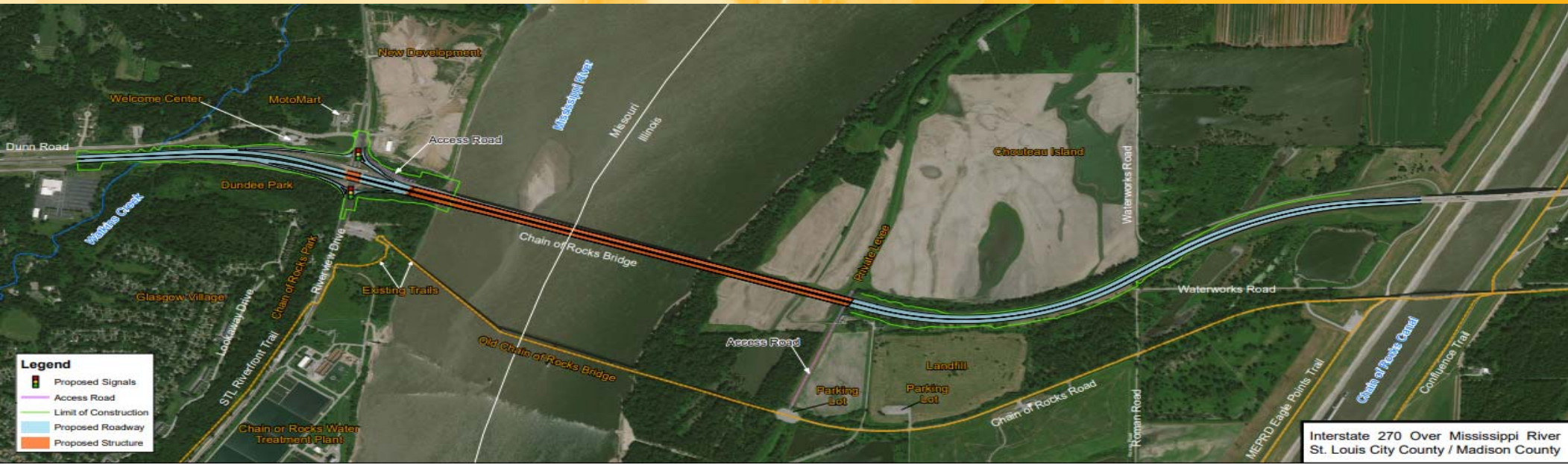


\$274 million project

- Construction begins late 2022. Mainline approaches and new bridge will accommodate six lanes w/ 10' shoulder.
- New bridge will consist of dual structures. First bridge built immediately south of existing bridge.
- IDOT is committed to doing its best to keep two lanes of traffic each direction on I-270.

2023 **UPDATES** Freightway Priority Project List

Riverview Drive & I-270 Interchange Modification (MO)



- Expect ramp closures at the Riverview interchange during construction, signed detours will be provided.
- Given the close proximity of Riverview to the Chain of Rocks Bridge, access to and from I-270 will be restricted throughout the approximately 4-year long construction program.

2023 **UPDATES** Freightway Priority Project List

I-70 from Wentzville to Stan Musial Veterans Memorial Bridge



MoDOT Unfunded Multimodal Needs: I-70 from 141 to I-170 – Total \$178.6 mil

Reconfigure STL Airport access and reconfigure interchanges

Improved interstate and MetroLink access to the airport.

Support the new conceptual single terminal at St. Louis Lambert International Airport. ←

“St. Louis Lambert International Airport, MoDOT and MetroLink working together on ease of accessibility to a new conceptual single terminal is incredibly important and as region we should support. This project is a tremendous benefit as an economic development driver allowing us to attract and retain all industries.”

- Asim Raza, Chief Legal Officer and Director of Corporate Affairs, Terminal Railroad Association of St. Louis, February 7, 2022

2023 **UPDATES** Freightway Priority Project List

Additions based on MoDOT Unfunded Multimodal Needs

MoDOT Unfunded Multimodal Needs:

- **I-55 from Rte Z to 67** (Long Range Plan 2030-2039)
Tier 1 - \$54.2 mil STIP \$92 mil
- **I-64 at I-70 Reconfigure interchange**
Tier 1 – \$22.6 mil
Tier 2 - \$18 mil
- **I-270 Rte 367 to Rte H (Riverview Dr)**
Tier 1 - \$33.9 mil STIP



2023 **UPDATES** Freightway Priority Project List

I-70 from Wentzville to Stan Musial Veterans Memorial Bridge (MO)

MoDOT Unfunded Multimodal Needs:

ADD to I-70 High Priority Project List

- **I-70 St. Louis City Limit to Benton St**
Tier 2 - \$168 mil
Reconfigure interchanges and safety enhancements

ADD to I-70 Fact Sheet

- **I-70 Wentzville Parkway to Warren Co**
Tier 3 - \$27.94 mil
Add Capacity



2023 **UPDATES** Freightway Priority Project List I-255/Davis St Ferry Interchange

I-255/Davis St Ferry Rd Interchange - Construction is anticipated early summer 2023.

Interchange project will benefit the Dupo Intermodal Yard in order to expand operation and remain competitive, as well as support development near the proposed interchange.



2023 **UPDATES** Freightway Priority Project List

I-70 from Wentzville to Stan Musial Veterans Memorial Bridge (MO)

MoDOT Unfunded Multimodal Needs:
ADD to I-70 Fact Sheet.

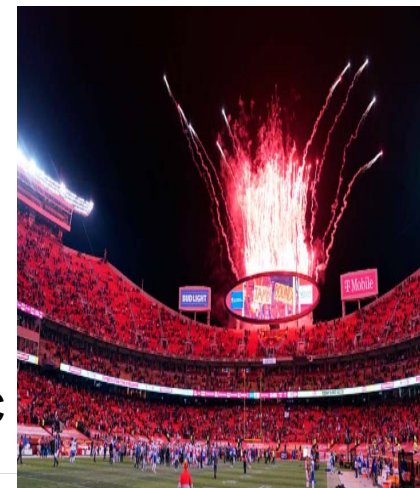
Partnership Between Kansas City and the St. Louis Region Highlights the Importance to Reconstruction and Adding capacity to Missouri's Statewide I-70 corridor



STL



KC



2023 **UPDATES** Freightway Priority Project List

Jefferson County Port Development Project (MO)

Mississippi River Port Development Projects

Partially programmed for construction

Jefferson County Port Development Project

UPDATE: Herculaneum Container Consolidation Port Facilities at Riverview Commerce Park. Jefferson County received \$25 million for the port development from the state of Missouri.

2023 **UPDATES** Freightway Priority Project List

North Riverfront Commerce Corridor Improvements (MO)

North Riverfront Commerce Corridor Improvements (MO)

Partially Programmed for Construction

Adelaide Ave to Riverview Dr.

- Proposed Scope: Flood mitigation with road reductions
- MoDOT, MSD, City of St. Louis and Freightway working together
- Community stakeholder engagement



2023 **UPDATES** Freightway Priority Project List Kaskaskia Regional Port District Improvements (IL)

Kaskaskia Regional Port District Improvements (IL)

Partially Programmed for Construction

The following are updates:

- \$10 mil Funded** New rail loop at KRPD#1
New by-products from Prairie State Campus to the Kaskaskia River generating additional 1.5 mil tonnage.
- \$2.7 mil Funded** Conveyer upgrade and expansion of fertilizer plant at KRPD#2



Pictured, from left, are Kaskaskia Regional Port District secretary Anna Guebert, Gov. JB Pritzker, KRPD board chairman George Obernagel and KRPD board members Rodney Linker and Mark Chatham during last Wednesday's event in East St. Louis.

Republic-Times

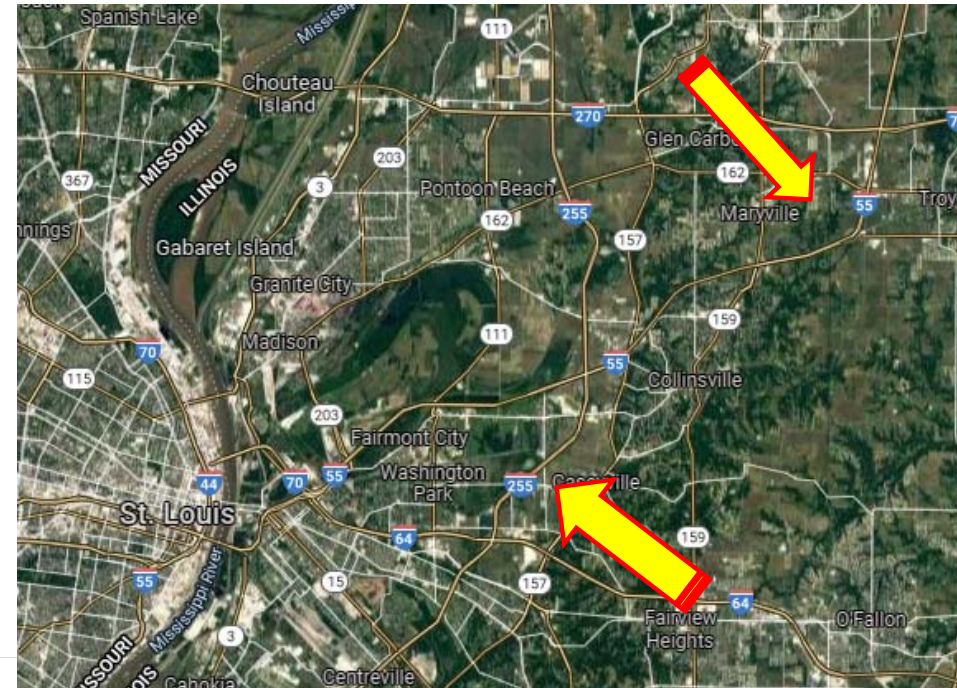
2023 **UPDATES** Freightway Priority Project List

I-55/70 Add lanes from I-255 to I-270 (IL)

New Project – Concept Development **I-55/70 Add lanes from I-255 to I-270 \$456 mil**

Proposed project would extend six lanes starting at I-255

High-capacity regional crossroad that includes the convergence of I-55 and I-70 that provides connectivity to the region's outer belt I-270/I-255.



2023 **UPDATES** Freightway Priority Project List

IL Rte 3 Connector (IL)

New Project – Advanced to Construction

IL Rte 3 Connector – New alignment between IL Rte 3 and IL Rte 203

Improves mobility and connectivity FUNDED \$81.5 mil

TRRA operates the Madison Yard intermodal facility northeast of this project. The CSX East St. Louis Intermodal Terminal in Fairmont City and Washington Park is also in close proximity. The project will benefit both rail yards by helping to increase freight reliability and efficiency benefitting IL Rte 3 and IL Rte 203



2023 **UPDATES** Freightway Priority Project List America's Central Port Intermodal Improvements (IL)

America's Central Port project updates:

- A. Granite City Harbor Lead Track Revitalization – Completed
- B. Red Dock Rail Expansion – Cost updates
- C. New Port Entrance at IL Rte 3 – Funded and under construction!
- D. Rail Center (Phase 1) – New project!

ILLINOIS

Pritzker announces multi-million dollar investments for local transits, ports



- America's Central Port District in Granite City: \$21 million total investment with \$13 million for sediment reduction project in Madison Harbor, increasing operational efficiency and reducing long-term expenses.

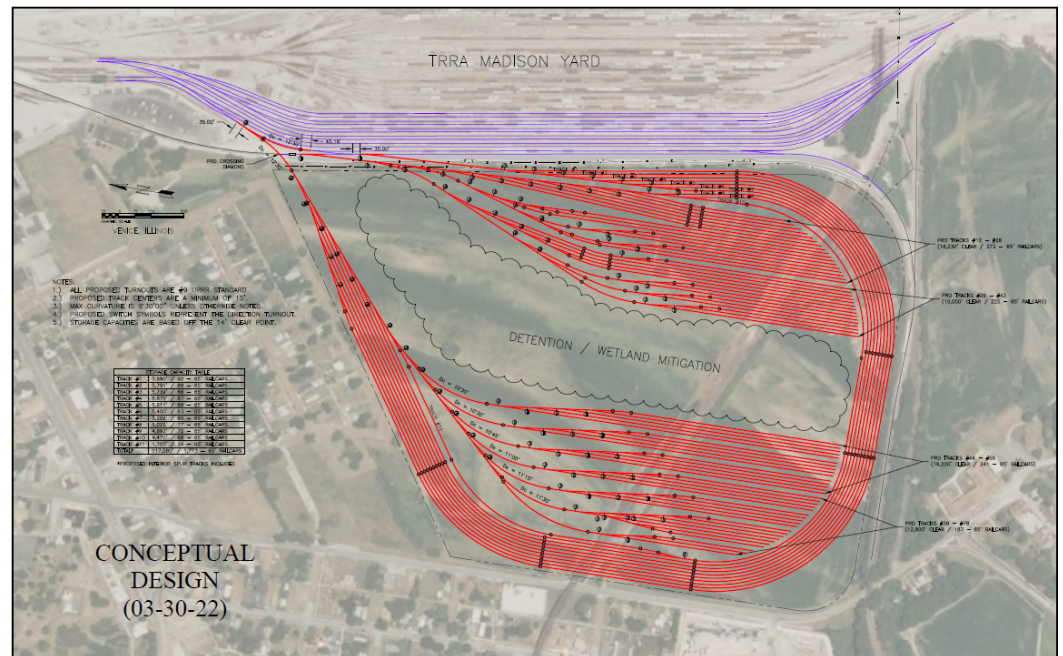


2023 UPDATES Freightway Priority Project List

St. Louis Multimodal Freight Yard Expansion at Madison Yard (IL)

St. Louis Multimodal Freight Yard Expansion at Madison Yard

Will expand railcar capacity by approximately 1,500 cars at TRRA's Madison Yard in Venice, IL. Railcar capacity will increase to hold a total of 4,000 cars. Improvements will relieve congested mainlines and efficiently process the increased demand of railcars on the network.



2023 Freightway Priority Project List Moving Forward



- Continue to maximize funding opportunities and improve multimodal capabilities with USDOT, IDOT, MoDOT, elected leaders and private sector partners.
- Marketing – Continue to advance container on barge/vessel development, build partnerships with gulf and coastal ports and attract shippers and carriers.
- Evaluating rail accessible sites, then addressing challenges to elevate developer ready status.

2023 Freightway Priority Project List

Request for approval



Thank you!