

A low-angle photograph of the St. Louis Gateway Arch, showing its two massive, white, curved legs rising towards a blue sky with scattered white clouds. The arch's surface has a subtle grid pattern. In the bottom left corner, the green foliage of trees is visible.

Summary of Air Quality Conformity Determination

FY 2023 – 2026 Transportation Improvement
Program and Related Amendments to
Update to *Connected2045*

June 2022

Purpose of Air Quality Conformity

- Projects must be analyzed to determine that they meet requirements of (conform to) state air quality ozone plans
- All projects must be included in the analysis
- Projects not included in the analysis cannot progress/move ahead toward implementation

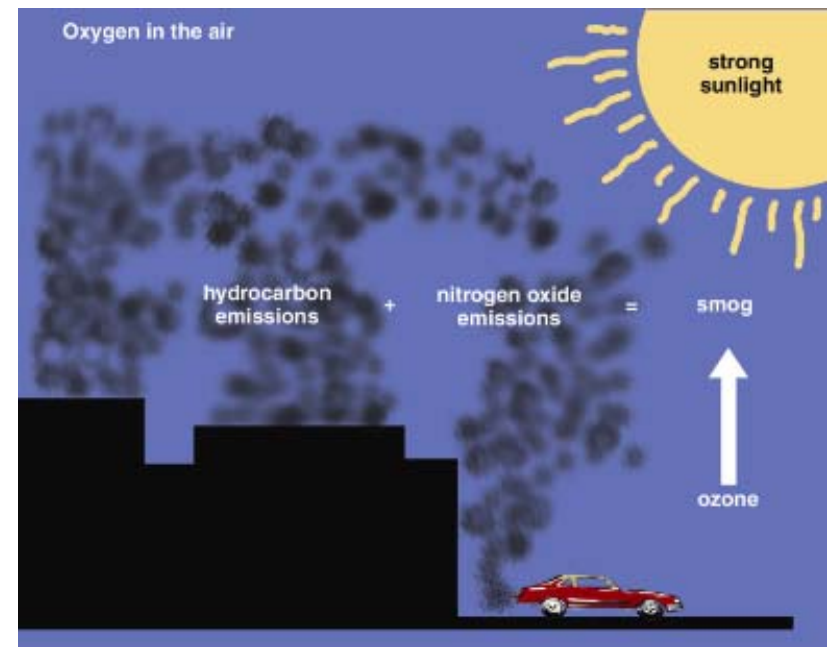


EAST-WEST GATEWAY
Council of Governments

Creating Solutions Across Jurisdictional Boundaries

What Is Ozone?

- Ground level ozone is formed when hydrocarbons (or volatile organic compounds – VOC) and nitrogen oxides (NO_x) from vehicle exhaust and other industrial processes chemically react with oxygen in the lower atmosphere
- Weather influences formation – strong sunshine, low wind speed and temperatures of 85° and higher



Air Quality Conformity Determination Process - Ozone

- Conformity evaluates the impact of proposed transportation activities on the region's air quality
- Projects included in the Transportation Improvement Program (TIP) must pass regional emissions analysis tests for VOC and NO_x for future analysis years out to 2045 (horizon year for *Connected2045* Update)
- Federal and state regulations require that for each analysis year, emissions of VOC and NO_x resulting from the implementation of the TIP (Action) will be less than or equal to the VOC and NO_x motor vehicle emissions budgets (upper limits) established by Missouri and Illinois in both of their ozone State Implementation Plans (SIPs)
 - Done through a series of computer modeling exercises

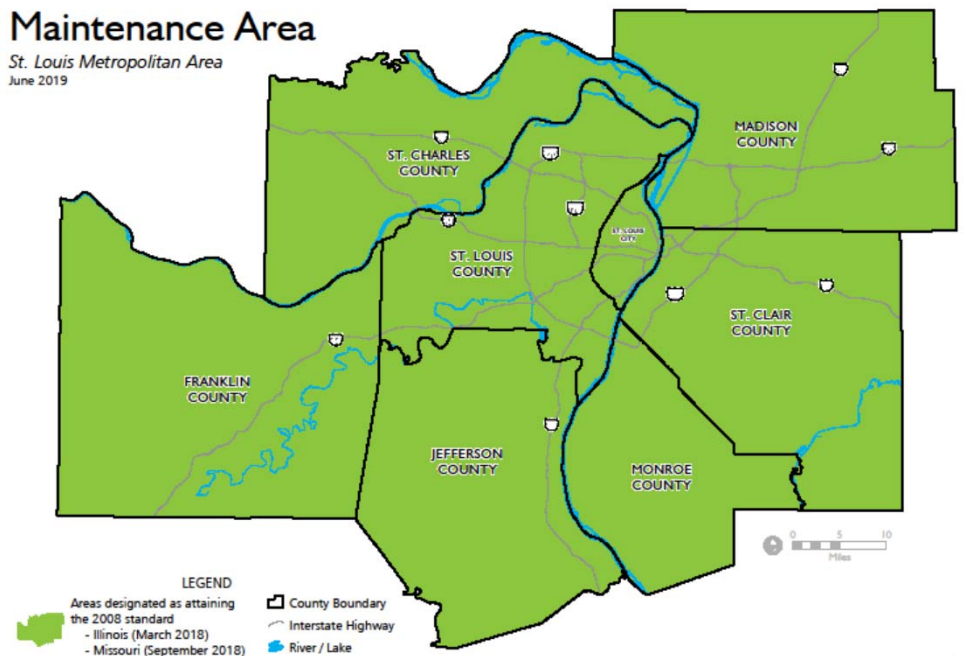


Conformity to be done for 2008 Ozone Standard

- EPA has re-designated the eight-county St. Louis region (MO-IL) as being in attainment of this standard
- Considered a maintenance area
- **EPA has not revoked the 2008 standard so a Conformity Determination has to be performed for it**

2008 Ozone Standard Maintenance Area

St. Louis Metropolitan Area
June 2019



Source: East-West Gateway Council of Governments



EAST-WEST GATEWAY
Council of Governments

Creating Solutions Across Jurisdictional Boundaries

Conformity Results - 2008 Standard

MISSOURI 5 County Maintenance Area		
Analysis Year	VOC Action ≤ Budget	NO _x Action ≤ Budget
2025	Pass	Pass
2030	Pass	Pass
2035	Pass	Pass
2045	Pass	Pass

- For 2025 - Modeled Action emissions are compared to 2015 Budgets for VOC and NO_x from MO SIP
- For remaining analysis years - Modeled Action emissions are compared to 2030 Budgets from MO SIP

ILLINOIS 3 County Maintenance Area		
Analysis Year	VOC Action ≤ Budget	NO _x Action ≤ Budget
2025	Pass	Pass
2030	Pass	Pass
2035	Pass	Pass
2045	Pass	Pass

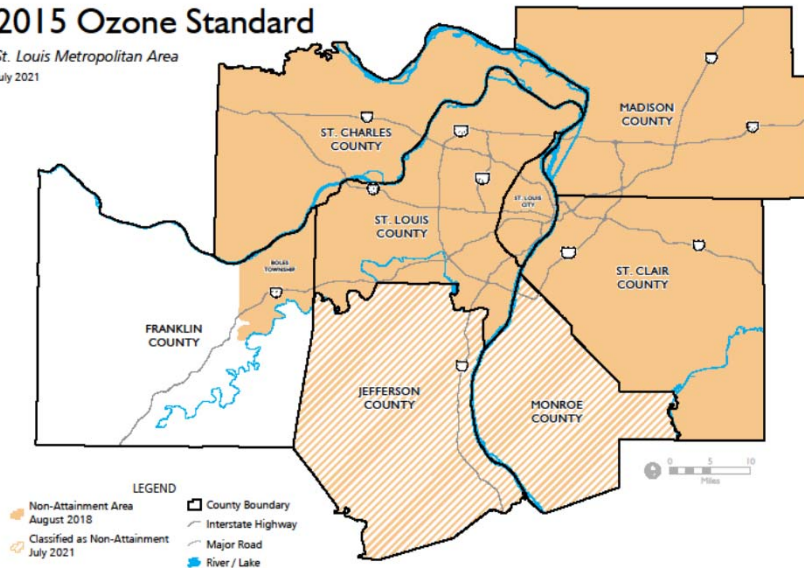
- For 2025 - Modeled Action emissions are compared to 2025 Budgets for VOC and NO_x from IL SIP
- For remaining analysis years - Modeled Action emissions are compared to 2030 Budgets from IL SIP



Conformity to be done for 2015 Ozone Standard

Non-Attainment Area 2015 Ozone Standard

St. Louis Metropolitan Area
July 2021



Sources: East-West Gateway Council of Governments



- EPA has designated the following as non-attainment for this standard:
 - Jefferson, St. Charles and St. Louis Counties, City of St. Louis and Boles Township in Missouri
 - Madison, Monroe and St. Clair Counties in Illinois
- **Conformity to be performed for non-attainment area**



EAST-WEST GATEWAY
Council of Governments

Creating Solutions Across Jurisdictional Boundaries

Conformity Results - 2015 Standard

MISSOURI 4 County and 1 Township – Nonattainment Area		
Analysis Year	VOC Action ≤ Budget	NO _x Action ≤ Budget
2025	Pass	Pass
2030	Pass	Pass
2035	Pass	Pass
2045	Pass	Pass

- For 2025 - Modeled Action emissions are compared to 2015 Budgets from MO SIP
- For remaining analysis years - Modeled Action emissions are compared to 2030 Budgets from MO SIP

ILLINOIS 3 County – Nonattainment Area		
Analysis Year	VOC Action ≤ Budget	NO _x Action ≤ Budget
2025	Pass	Pass
2030	Pass	Pass
2035	Pass	Pass
2045	Pass	Pass

- For 2025 - Modeled Action emissions are compared to 2025 Budgets from IL SIP
- For remaining analysis years - Modeled Action emissions are compared to 2030 Budgets from IL SIP



Air Quality Conformity for 1997 Eight-Hour Ozone Standard

- Only to be performed if there is a Regionally Significant Project(s) in Jersey County IL
 - **No** new regionally significant Jersey County project, no Conformity Determination had to be performed



Public Comment Period – July 1 – August 4

- Draft Conformity Determination and Draft FY 2023-2026 TIP available at www.ewgateway.org
- Mail or email comments/questions must be received by 5 pm, Thursday, August 4, 2022. Send them to TIP, East-West Gateway, 1 Memorial Drive, Suite 1600, St. Louis MO 63102 or TIP@ewgateway.org
- Open House Meetings
 - July 12 – Arnold Rec Center
 - July 20 – SIUE – East St. Louis Center
 - July 21 – Pacific City Hall
 - July 26 – St. Charles City-County Library, Spencer Rd Branch
 - July 27 – The Heights, Richmond Heights
 - All from 4:30 pm – 6:30 pm



EAST-WEST GATEWAY
Council of Governments

Creating Solutions Across Jurisdictional Boundaries