



I-270 North Design-Build Project

East-West Gateway Presentation

April 2022



MHTC Award November 2019



Virtual Public Meeting March 2020



Live Chat & Virtual Public Meeting



Major Interchanges

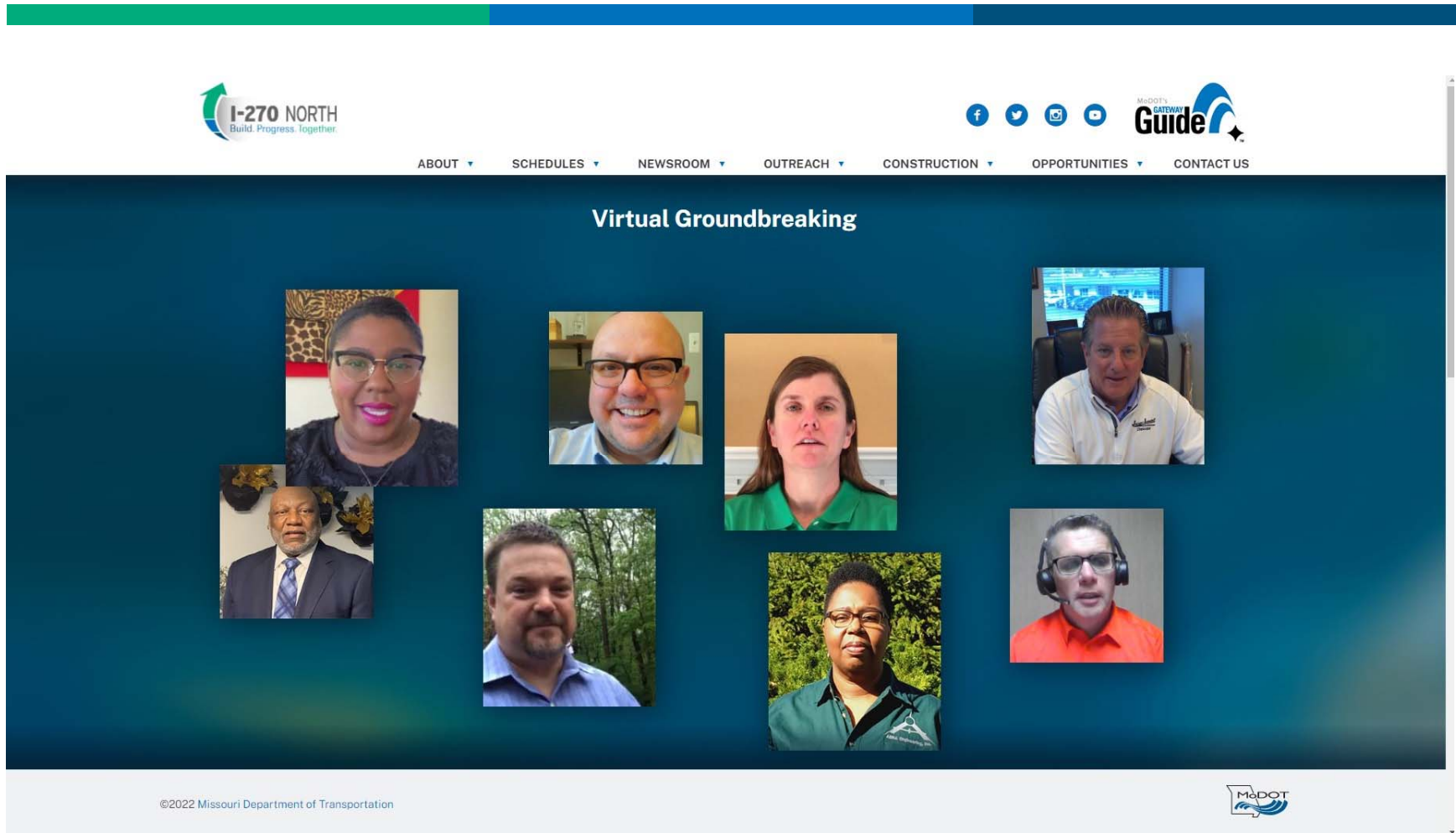
Top image - I-270 North and Lindbergh Interchange, removing loop ramps and building a new interchange with traffic signals at the on-and off-ramps.

Bottom image - I-270 North at Route 367 Interchange, replacing three loop ramps with new geometrics to enhance traffic flow and safety. The new ramp from eastbound I-270 to northbound Route 367 will have two lanes.

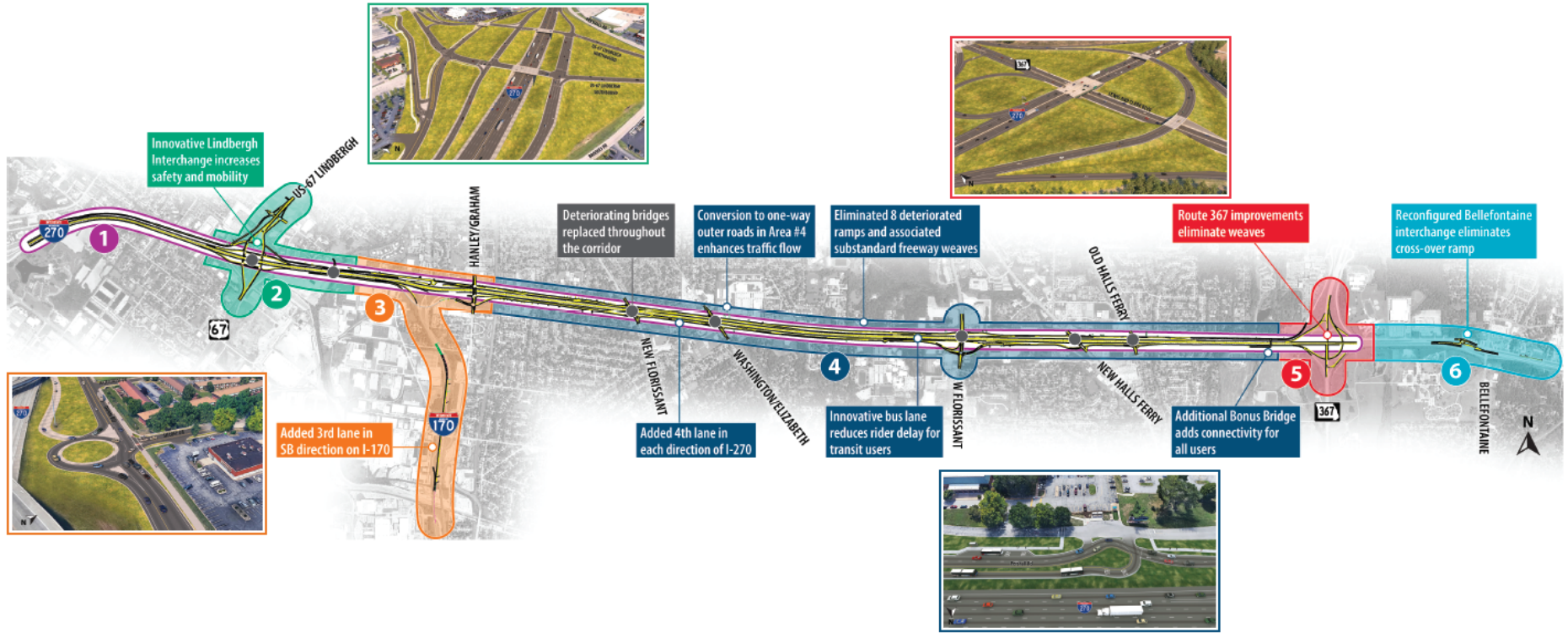
[Download PDF](#)



Virtual Groundbreaking April 2020



I-270 North Design Build Project



Segment 3 I-170 & Hanley/Graham

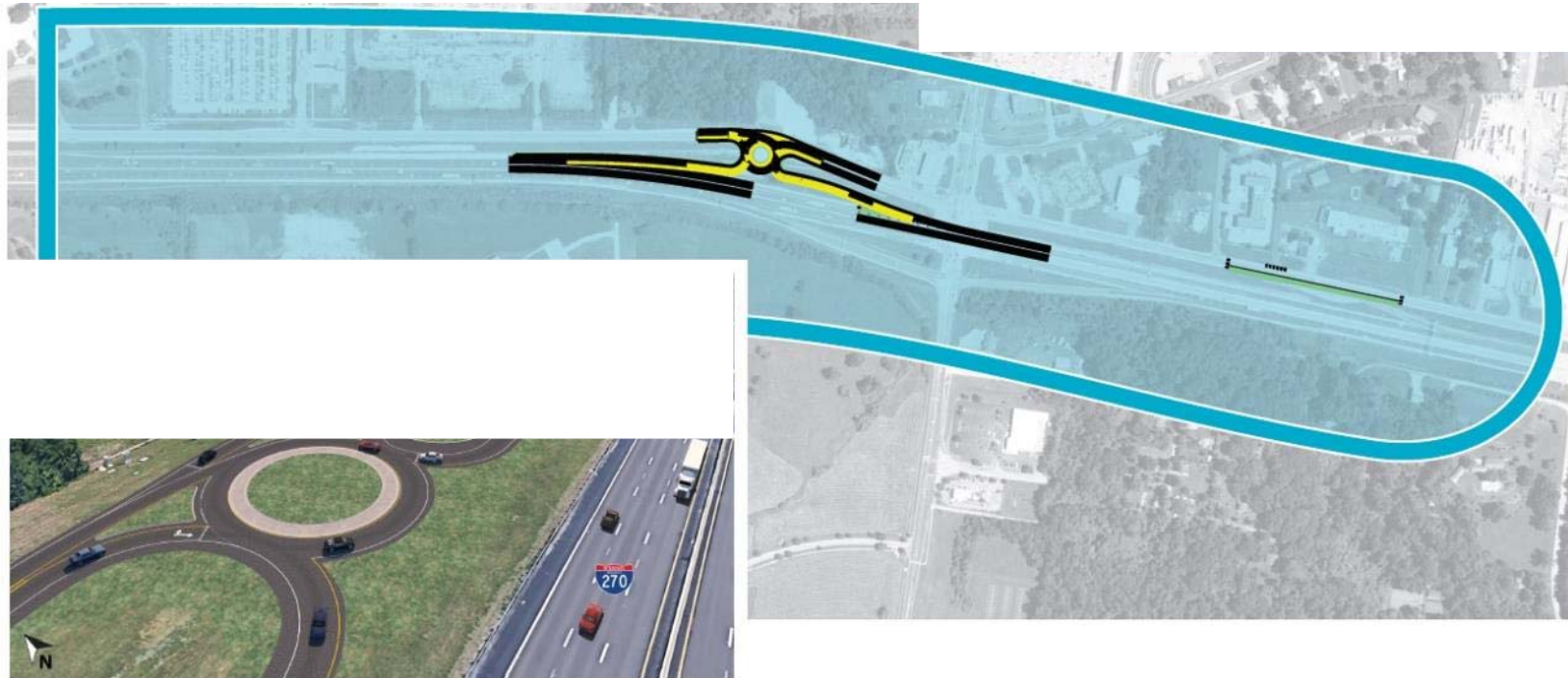
Figure 4a.22 - Segment 3



- Convert WB crossover slip ramp to roundabout
- Widen SB I-170 to 3 lanes



Segment 6 Bellefontaine Road



- Consolidate WB on and off-ramps into one roundabout
- Eliminate crossover slip ramp

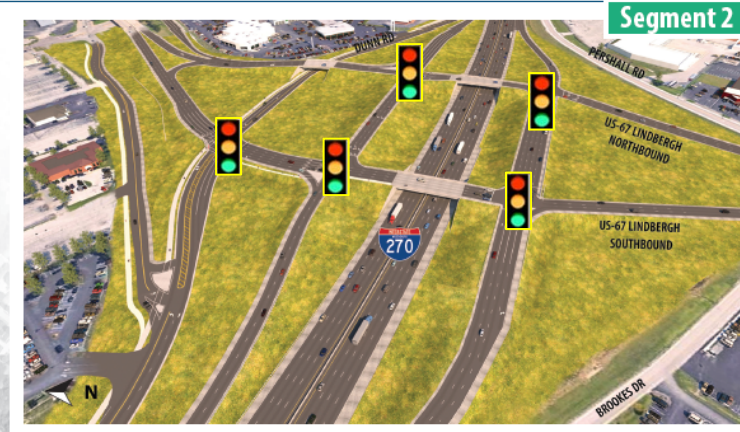
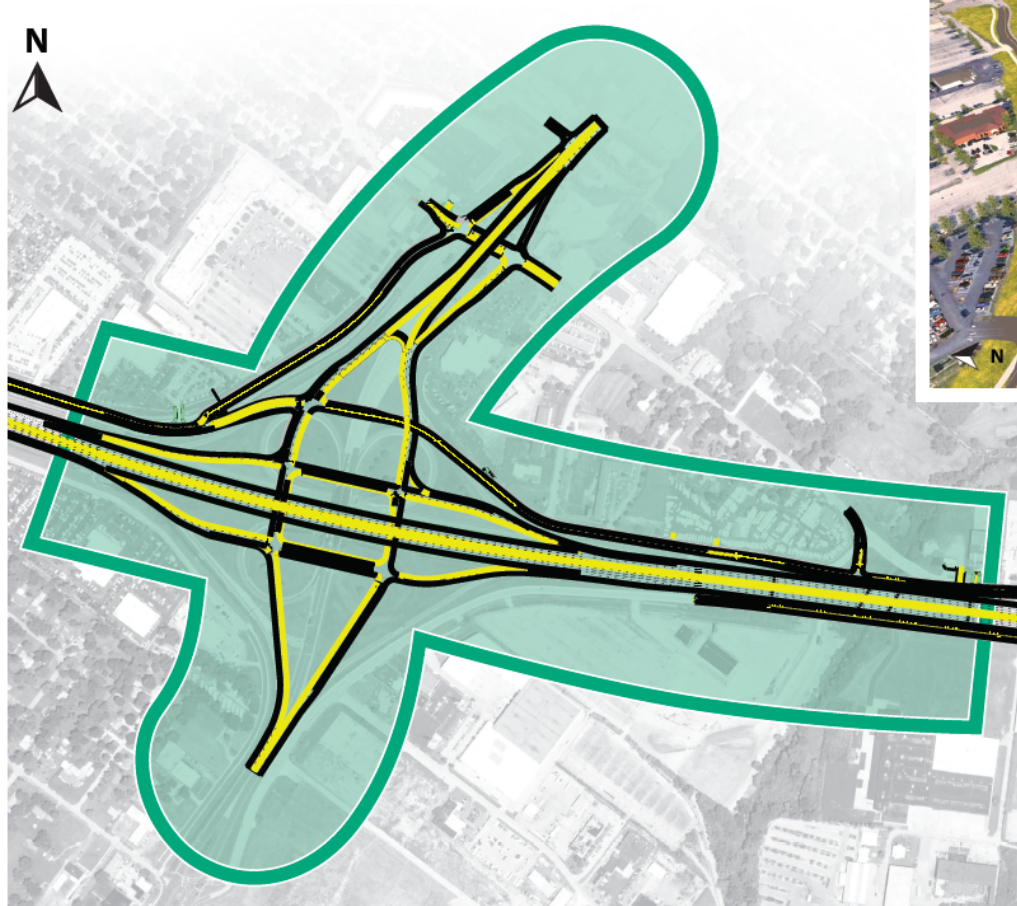


Bellefontaine December 2020



Segment 2 Lindbergh Boulevard

Figure 4a.20 - Segment 2



- Split Lindbergh NB & SB
- Eliminate all loop ramps and short weaves
- Tie WB off-ramp directly to Lindbergh
- Connect Dunn Rd across Lindbergh



Lindbergh June 2021



Lindbergh October 2021



Lindbergh February 2022



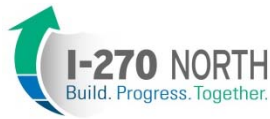
Coldwater Creek October 2021



Coldwater Creek December 2021



Pershall June 2020



Pershall October 2021



Pershall over I-270 August 2021



West Florissant April 2021



West Florissant April 2021



West Florissant August 2021



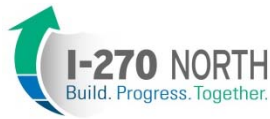
Dunn February 2022



Dunn February 2022

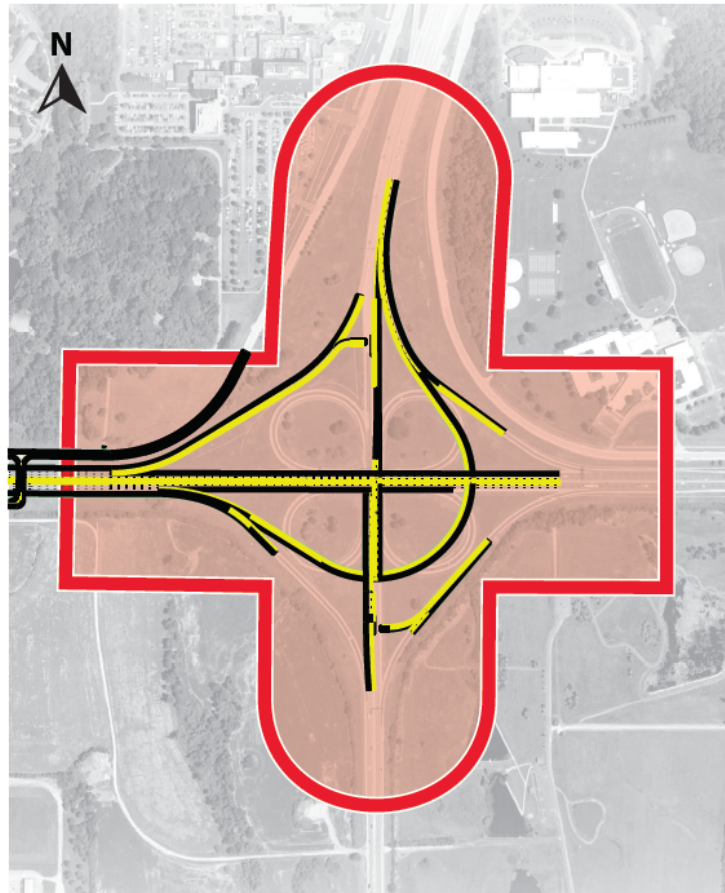


New Florissant February 2022



Segment 5 Route 367 Interchange

Figure 4a.26 - Segment 5



Segment 5



- 2-Lane EB to NB direct connection
- 2-Lane WB on-ramp
- Eliminate 3 loop ramps and all short weaves
- Green-T intersection at ramp terminals



DBE Goals

Disadvantaged Business Enterprise



DBE CAPACITY BUILDING

Millstone Weber is committed to the success, development, and growth of DBEs in the professional services and construction. We are actively recruiting DBEs to participate on this project. We seek to preserve our reputation of DBE program excellence by maximizing DBE participation throughout the project. All quotations will be treated fairly and confidentially.

DBE Opportunities

I-270 North Construction and Construction-Related Opportunities:

- Asphalt Paving
- Concrete Flatwork
- Drainage
- Earthwork/Trucking/Hauling
- Electrical
- Engineering Support
- Engineering Surveying Services
- Erosion Control
- Seed/Sod/Mulch
- Signals
- Structural Steel
- Traffic Control/Striping
- Geotechnical Services
- Guardrail
- Hauling
- ITS
- Landscaping
- Lighting
- Material Delivery
- MSE Walls
- PC Girders
- Quality Management
- Railing/Fencing
- Rebar

[View/Print DBE Opportunities Flyer](#)

DBE Goals

- ▶ Millstone Weber is committed to meeting and exceeding the DBE goal of 22 percent for professional services and is on track to meet and exceed the DBE goal of 18 percent for construction services.

Total Amount paid to DBEs firms through February 2022:

\$19.5 Million
(\$19,491,053.64)



Scheduled Payment Amount for the Entire Project: \$45 Million
(\$44,956,572)



Workforce Development

Workforce



WORKFORCE DIVERSITY

Millstone Weber is committed to the development of a diverse and skilled workforce. We are committed to hiring and retaining graduates of pre-apprenticeship and apprenticeship training programs who are minorities, women or economically disadvantaged individuals.

Workforce Goals

- ▶ Millstone Weber, along with its designer, Parsons, is committed to closing the workforce gap by meeting and exceeding the federal workforce standards of 14.7 percent minority and 6.9 percent women participation per craft, including professional services.

Total Minority Hours:
22.1% (103,967)

Total Female Hours:
19.1% (89,895)

Total Workforce Hours: 470,439
As of February 2022.

Workforce Opportunities

For more information contact Melisa Moore at melisa.moore@millstoneweber.com. For additional opportunities visit Millstone Webers career page.



Project PAVE

Project PAVE

MoDOT and its contracting team leads, Millstone Weber and Parson's Transportation Group, are also investing in the futures of area high school students near the project boundaries.

Project Pave, a Science, Technology, Engineering and Math (STEM) Program, will mentor, teach and support students attending targeted St. Louis North County high schools. The goal is to stimulate an interest in and pursuit of heavy highway design, engineering, and construction careers.



[Learn More](#)

The program began in October 2020 and will conclude with its final cohort in 2023. During this first session...

31

students

16

ongoing

35

STEM presenters

"This is an opportunity to give students options to pursue rewarding careers in highway construction trades and construction-related professions. This program could open doors for these students that they never even considered, and we are pleased that we were able to bring this to the table as part of the I-270 North Project."

—I-270 North Project Director, Justin Wolf

Patrick Hanneken, an instructor at North Technical High School is already seeing a difference among his students. "Morale is above and beyond. I have 9 seniors and when they see this kind of success happening through these partnerships with Millstone Weber and other companies, it helps tremendously," Hanneken said. "Classes run smoother, more work is getting done, these kids are seeing the big picture at the end of the tunnel and saying 'Hey, that could be me.'"



Construction Schedule

2020

The following locations are scheduled to begin construction activities in 2020.

- ▶ Pershall construction between New Florissant and Washington/Elizabeth
- ▶ Old Halls Ferry Bridge and Interchange
- ▶ Washington/Elizabeth Bridge and Interchange
- ▶ US 67 (Lindbergh) Interchange construction begins (Duration of 2.5 years)
- ▶ Bellefontaine Interchange
- ▶ Southbound I-170 Widening
- ▶ Pershall Bridge connection to Dunn over I-270 east of Old Halls Ferry

2021

The following locations are scheduled to begin or continue construction activities throughout 2021.

- ▶ Coldwater Creek Bridges
- ▶ West Florissant Bridge and Intersection
- ▶ Outer Road Improvements begin
- ▶ MO 367 Interchange construction begins
- ▶ Pershall Bridge connection to Dunn over I-270 east of Old Halls Ferry
- ▶ US 67 (Lindbergh) Interchange construction continues



Construction Schedule

2022

The following locations are scheduled to begin or continue construction activities throughout 2021.

- ▶ Mainline I-270 Widening begins
- ▶ I-270 Over New Halls Ferry EB Bridge
- ▶ I-270 Over New Florissant EB Bridge
- ▶ MO 367 Interchange construction continues
- ▶ US 67 (Lindbergh) Interchange construction continues

2023

The following locations are scheduled to wrap up construction activities in 2023.

- ▶ Mainline I-270 Widening continues
- ▶ I-270 Over New Halls Ferry WB Bridge
- ▶ I-270 Over New Florissant WB Bridge
- ▶ Mainline I-270 Asphalt Overlay
- ▶ MO 367 Interchange construction completed
- ▶ US 67 (Lindbergh) Interchange construction completed
- ▶ **Project Completed December 2023**



Questions?

Justin Wolf

I-270 North Project Director

Justin.Wolf@modot.mo.gov

314-624-3276

www.i270north.org

