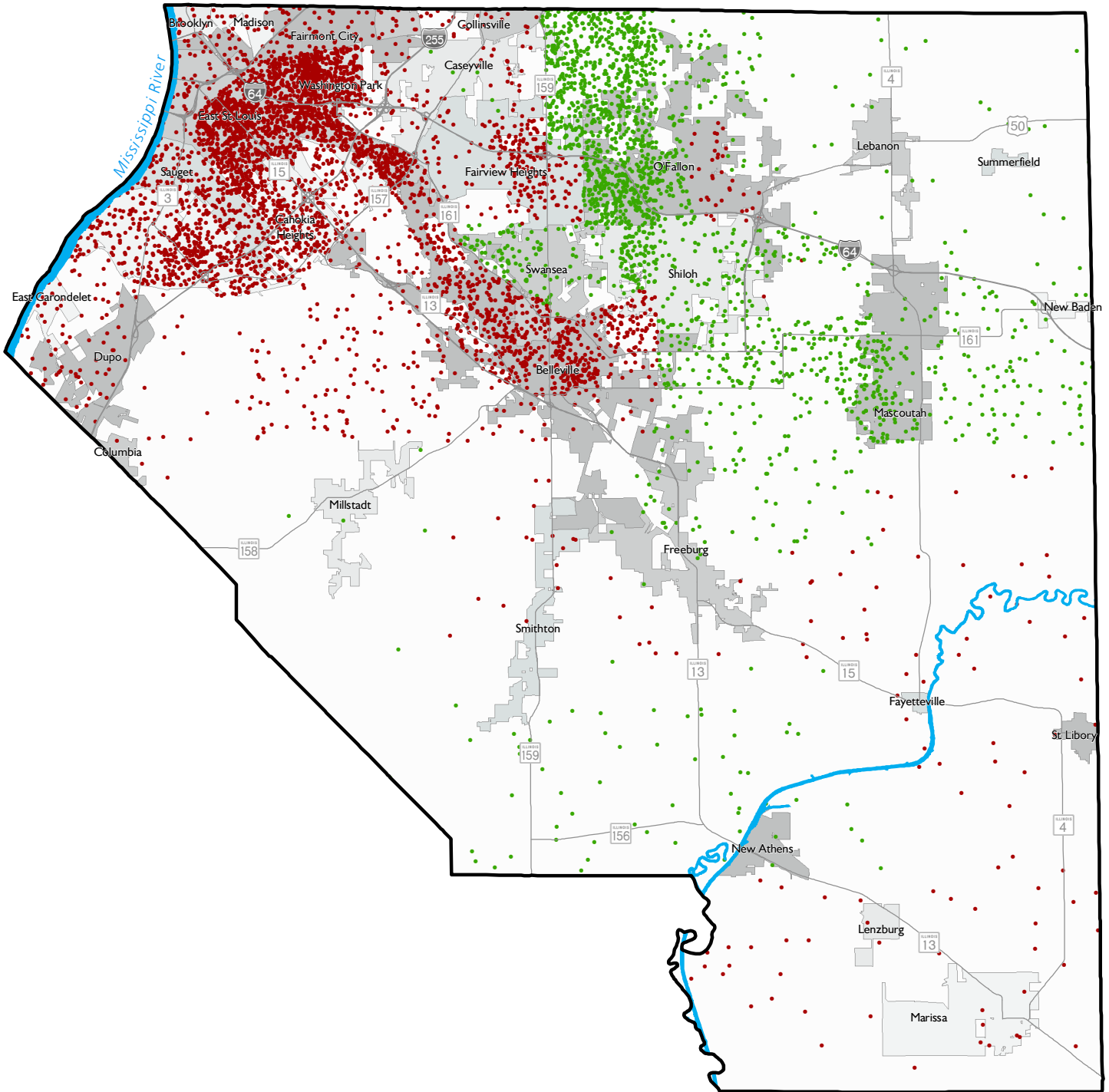


Population Change, 2010-2020

St. Clair County, Illinois

September 2021



1 Dot = 5 Persons

● Increase

● Decrease

Other Map Items

▭ County Boundary

▭ Municipal Boundary

— Major Road

🌊 River / Lake

Dots are randomly placed within 2020 Census tracts.
Tract boundaries are not shown on the map.

Sources: 2020 Census State Redistricting Data
(Public Law 94-171) Summary File Illinois, Missouri;
East-West Gateway Council of Governments