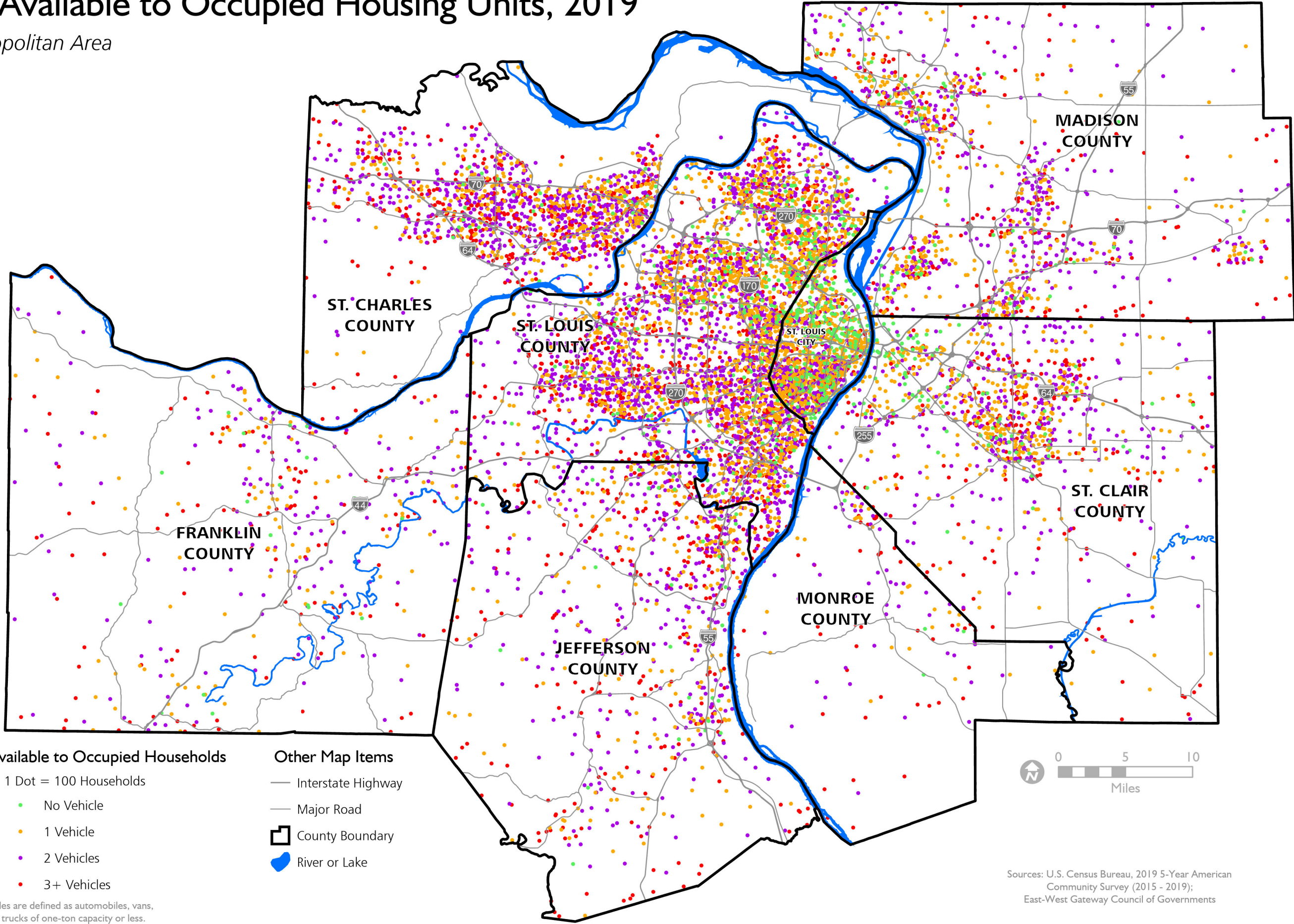


Vehicles Available to Occupied Housing Units, 2019

St. Louis Metropolitan Area

February 2021



Vehicles Available to Occupied Households

- 1 Dot = 100 Households
- No Vehicle
- 1 Vehicle
- 2 Vehicles
- 3+ Vehicles

Other Map Items

- Interstate Highway
- Major Road
- ▭ County Boundary
- River or Lake



Sources: U.S. Census Bureau, 2019 5-Year American Community Survey (2015 - 2019); East-West Gateway Council of Governments

Vehicles are defined as automobiles, vans, and trucks of one-ton capacity or less. Dots are randomly placed within U.S. Census tracts. Tract boundaries are not shown on this map.

