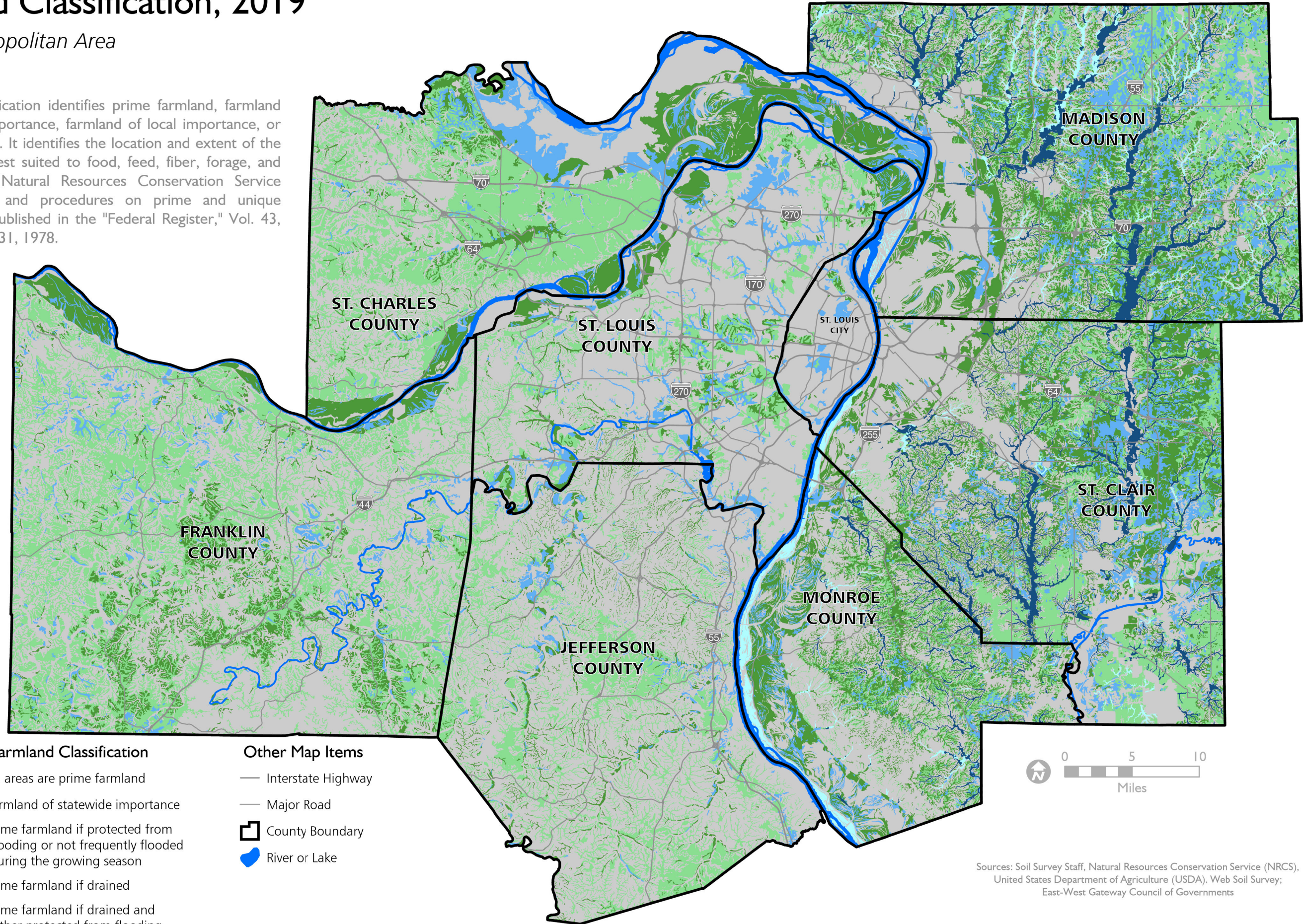


Farmland Classification, 2019

St. Louis Metropolitan Area

December 2020

Farmland classification identifies prime farmland, farmland of statewide importance, farmland of local importance, or unique farmland. It identifies the location and extent of the soils that are best suited to food, feed, fiber, forage, and oilseed crops. Natural Resources Conservation Service (NRCS) policy and procedures on prime and unique farmlands are published in the "Federal Register," Vol. 43, No. 21, January 31, 1978.



Sources: Soil Survey Staff, Natural Resources Conservation Service (NRCS), United States Department of Agriculture (USDA). Web Soil Survey; East-West Gateway Council of Governments



EAST-WEST GATEWAY
Council of Governments