



# Where We Stand: 8th Edition

How does St. Louis compare to our peer metro regions?

**WWS Update 2: Homicides**

**East-West Gateway  
Board of Directors**

**September 25, 2019**

[www.ewgateway.org/wws](http://www.ewgateway.org/wws)

**WHERE  
WE  
STAND**

The Strategic  
Assessment  
of the  
St. Louis Region

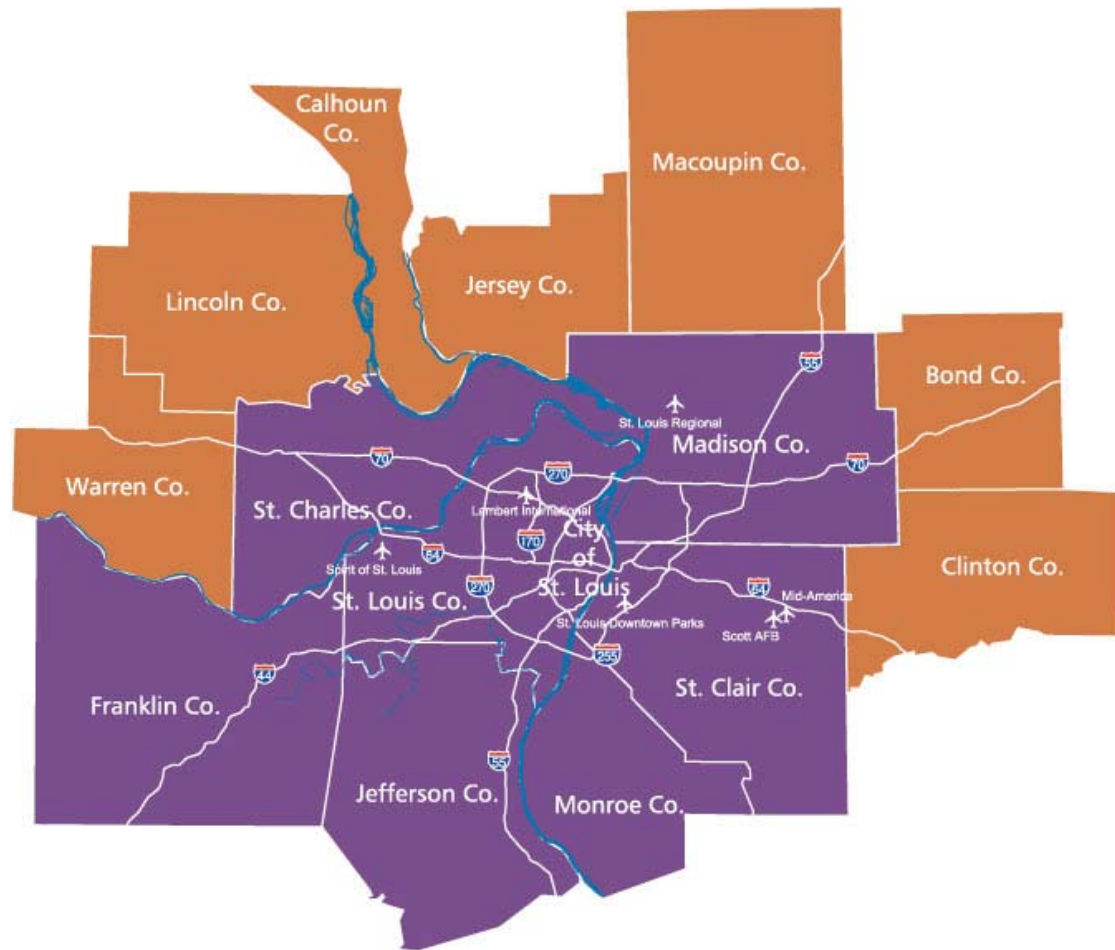
8th Edition  
2018

**EAST-WEST GATEWAY  
Council of Governments**

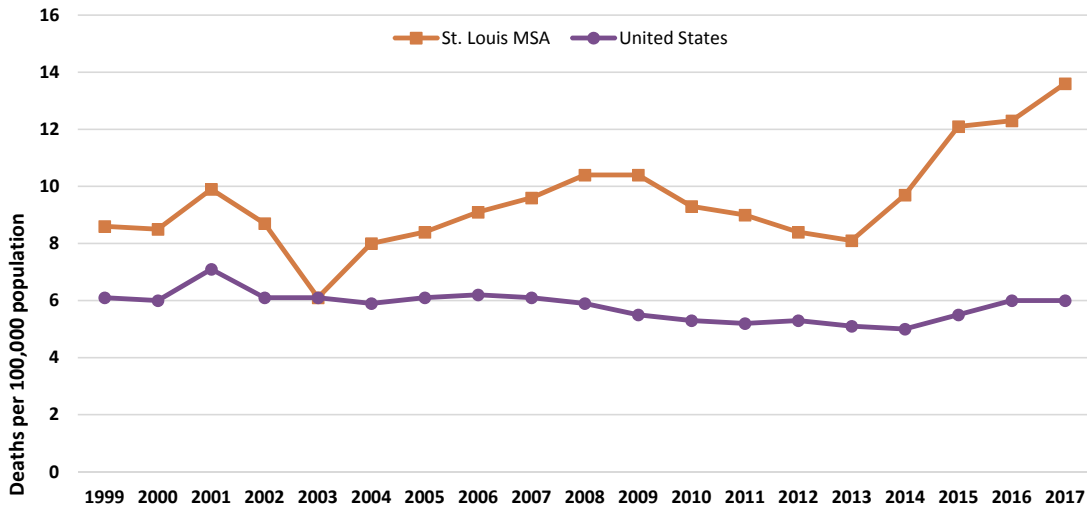
Creating Solutions Across Jurisdictional Boundaries

# St. Louis 15-County Metropolitan Statistical Area (MSA)

## East-West Gateway 8-County Region



**Homicides**  
Deaths per 100,000 population  
St. Louis MSA and United States, 1999 to 2017



Source: Centers for Disease Control and Prevention

**Murder Rate**

Per 100,000 population, 2017

1	New Orleans	17.1
2	Memphis	16.3
3	Baltimore	14.7
4	St. Louis	12.6
5	Las Vegas	10.8
6	Louisville	9.5
7	Chicago	9.4
8	Indianapolis	8.3
9	Jacksonville	8.2
10	Philadelphia	8.1
11	Columbus	7.9
11	Detroit	7.9
11	Milwaukee	7.9
11	Virginia Beach	7.9
15	Nashville	7.8
16	Oklahoma City	7.6
17	Cleveland	7.2
18	Atlanta	6.7
19	Houston	6.4
19	San Antonio	6.4
21	Miami	6.1
22	Phoenix	5.7
23	Pittsburgh	5.4
24	Charlotte	5.3
	<b>United States</b>	<b>5.3</b>
25	Dallas	5.2
26	Cincinnati	5.1
27	Orlando	5.0
28	Los Angeles	4.8
29	Denver	4.6
29	Riverside	4.6
31	Washington, D.C.	4.5
32	Buffalo	4.3
32	Sacramento	4.3
34	San Francisco	4.2
35	Hartford	3.9
36	Salt Lake City	3.7
37	Tampa	3.6
38	Seattle	3.0
39	New York	2.8
40	Boston	2.6
40	Minneapolis	2.6
40	Portland	2.6
43	Austin	2.5
44	San Diego	2.4
44	San Jose	2.4
46	Providence	2.0

Source: FBI, Uniform Crime Reports (Tables 1, 6)

**Homicides**

Per 100,000 population, 2017

1	New Orleans	18.3
2	Memphis	17.7
3	Birmingham	16.6
4	Baltimore	15.0
5	St. Louis	13.6
6	Jacksonville	11.0
6	Kansas City	11.0
8	Richmond	10.7
9	Louisville	10.6
10	Chicago	10.4
11	Cleveland	9.8
12	Indianapolis	9.3
13	Milwaukee	8.8
14	Oklahoma City	8.6
15	Philadelphia	8.5
15	San Antonio	8.5
17	Las Vegas	8.4
18	Detroit	8.3
19	Nashville	8.1
20	Columbus	8.0
21	Atlanta	7.7
22	Virginia Beach	7.4
23	Houston	7.3
24	Miami	6.8
25	Charlotte	6.2
25	Phoenix	6.2
	<b>United States</b>	<b>6.0</b>
27	Cincinnati	5.9
27	Pittsburgh	5.9
29	Orlando	5.8
30	Dallas	5.7
31	Riverside	5.5
32	Los Angeles	5.2
32	Washington, D.C.	5.2
34	Sacramento	5.0
35	Tampa	4.9
36	Denver	4.8
37	Buffalo	4.7
37	San Francisco	4.7
39	Hartford	3.6
40	Salt Lake City	3.3
41	Seattle	3.2
42	New York	3.1
42	Raleigh	3.1
44	Portland	2.9
45	Minneapolis	2.8
46	San Jose	2.7
47	Austin	2.6
48	Boston	2.5
48	San Diego	2.5
50	Providence	2.0

Source: Centers for Disease Control and Prevention

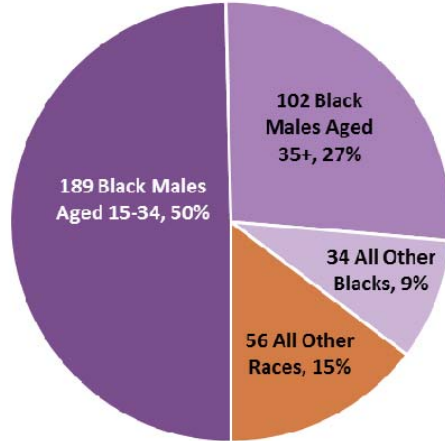
**Change in Homicides**

Point difference in homicide rate, 2013-2017

1	Birmingham	6.7
2	St. Louis	5.5
3	Louisville	4.7
4	Baltimore	4.5
5	Richmond	4.3
6	Memphis	4.0
6	Nashville	4.0
8	Chicago	3.2
9	Kansas City	3.0
9	San Antonio	3.0
11	Las Vegas	2.9
12	Cleveland	2.7
13	Jacksonville	2.3
14	Columbus	1.9
15	Atlanta	1.6
16	Oklahoma City	1.5
17	Salt Lake City	1.5
18	Milwaukee	1.3
19	Orlando	1.2
19	Philadelphia	1.2
21	Pittsburgh	1.1
21	Washington, D.C.	1.1
23	Portland	1.0
24	Indianapolis	0.9
	<b>United States</b>	<b>0.9</b>
25	Denver	0.9
26	Virginia Beach	0.8
27	Sacramento	0.8
28	Cincinnati	0.7
28	Phoenix	0.7
30	Seattle	0.6
31	Boston	0.4
31	Hartford	0.4
33	Dallas	0.3
33	Houston	0.3
33	Los Angeles	0.3
36	Charlotte	0.2
37	Austin	0.1
38	Minneapolis	0.0
39	San Francisco	-0.1
39	Tampa	-0.1
41	Raleigh	-0.1
42	Riverside	-0.2
43	San Diego	-0.3
44	San Jose	-0.4
45	Miami	-0.4
46	New York	-0.6
47	Buffalo	-0.8
47	Providence	-0.8
49	New Orleans	-1.6
50	Detroit	-1.8

Source: Centers for Disease Control and Prevention

**Homicide Victims  
by Race and Age Group  
St. Louis MSA, 2017**



Source: Centers for Disease Control and Prevention

**Non-Hispanic Black Homicides**

Per 100,000 non-Hispanic black people, 2017

1	St. Louis	60.9
2	Kansas City	49.6
3	Birmingham	45.5
4	Chicago	45.0
5	Baltimore	42.5
6	Milwaukee	41.1
7	New Orleans	40.9
7	Pittsburgh	40.9
9	Louisville	40.8
10	Indianapolis	37.2
11	Cleveland	35.7
12	Columbus	31.2
13	Jacksonville	31.1
13	Oklahoma City	31.1
15	Memphis	30.6
16	Philadelphia	29.8
17	Detroit	29.7
18	Cincinnati	28.6
19	Nashville	28.4
20	Richmond	28.0
21	San Francisco	27.6
22	Las Vegas	27.0
23	Buffalo	25.2
	<b>United States</b>	<b>23.2</b>
24	Sacramento	22.9
25	Houston	21.3
26	Miami	20.4
27	Los Angeles	20.1
28	San Antonio	19.6
29	Riverside	18.5
30	Phoenix	18.3
31	Charlotte	18.2
32	Tampa	18.0
33	Virginia Beach	17.8
34	Dallas	17.1
35	Denver	16.4
36	Atlanta	16.3
37	Orlando	16.1
38	Hartford	16.0
39	Minneapolis	15.6
40	Seattle	14.7
41	Washington, D.C.	14.1
42	Boston	11.3
43	New York	10.8
44	Raleigh	7.7

Source: Centers for Disease Control and Prevention

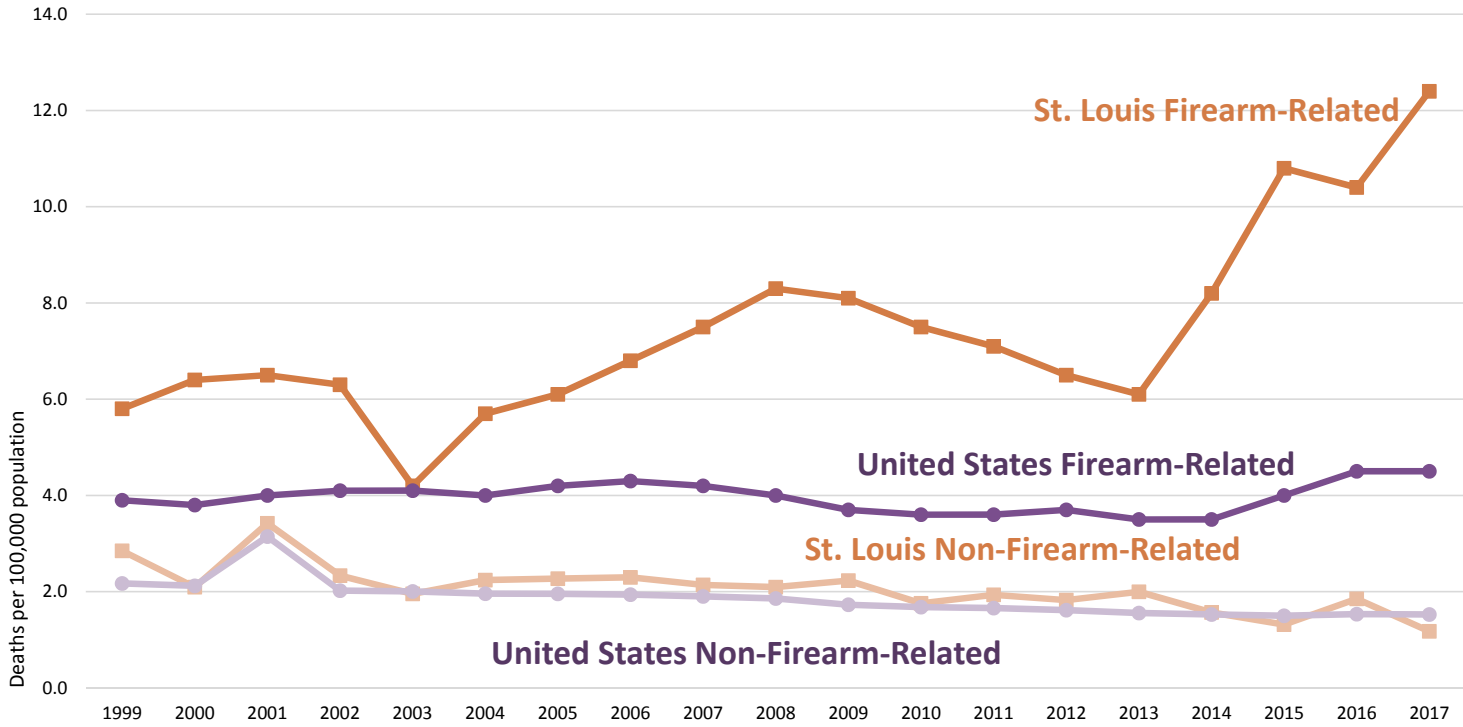
**Non-Hispanic White Homicides**

Per 100,000 non-Hispanic white people, 2017

1	San Antonio	7.4
2	Las Vegas	5.7
3	Jacksonville	5.4
4	Oklahoma City	4.8
5	Louisville	4.7
5	Memphis	4.7
7	New Orleans	4.4
8	Birmingham	4.2
8	Orlando	4.2
10	Kansas City	4.0
11	Indianapolis	3.9
11	Nashville	3.9
13	Phoenix	3.8
14	Riverside	3.5
15	Houston	3.4
16	Cleveland	3.1
16	Dallas	3.1
16	Salt Lake City	3.1
16	Tampa	3.1
20	Columbus	3.0
	<b>United States</b>	<b>2.9</b>
21	Baltimore	2.8
21	Richmond	2.8
21	Sacramento	2.8
24	Miami	2.7
25	Atlanta	2.6
25	Cincinnati	2.6
25	Denver	2.6
25	Portland	2.6
29	Pittsburgh	2.4
29	St. Louis	2.4
31	Charlotte	2.2
31	Los Angeles	2.2
31	Virginia Beach	2.2
34	San Francisco	2.1
35	San Diego	2.0
36	Austin	1.9
36	Detroit	1.9
38	Chicago	1.8
38	Philadelphia	1.8
38	Seattle	1.8
41	Minneapolis	1.4
42	Washington, D.C.	1.3
43	Boston	1.2
44	New York	0.9

Source: Centers for Disease Control and Prevention

## Non-Firearm Homicides and Firearm Homicides Deaths per 100,000 population St. Louis MSA and United States, 1999 to 2017



Source: Centers for Disease Control and Prevention

### Firearm Homicides

Percent of all homicides, 2017

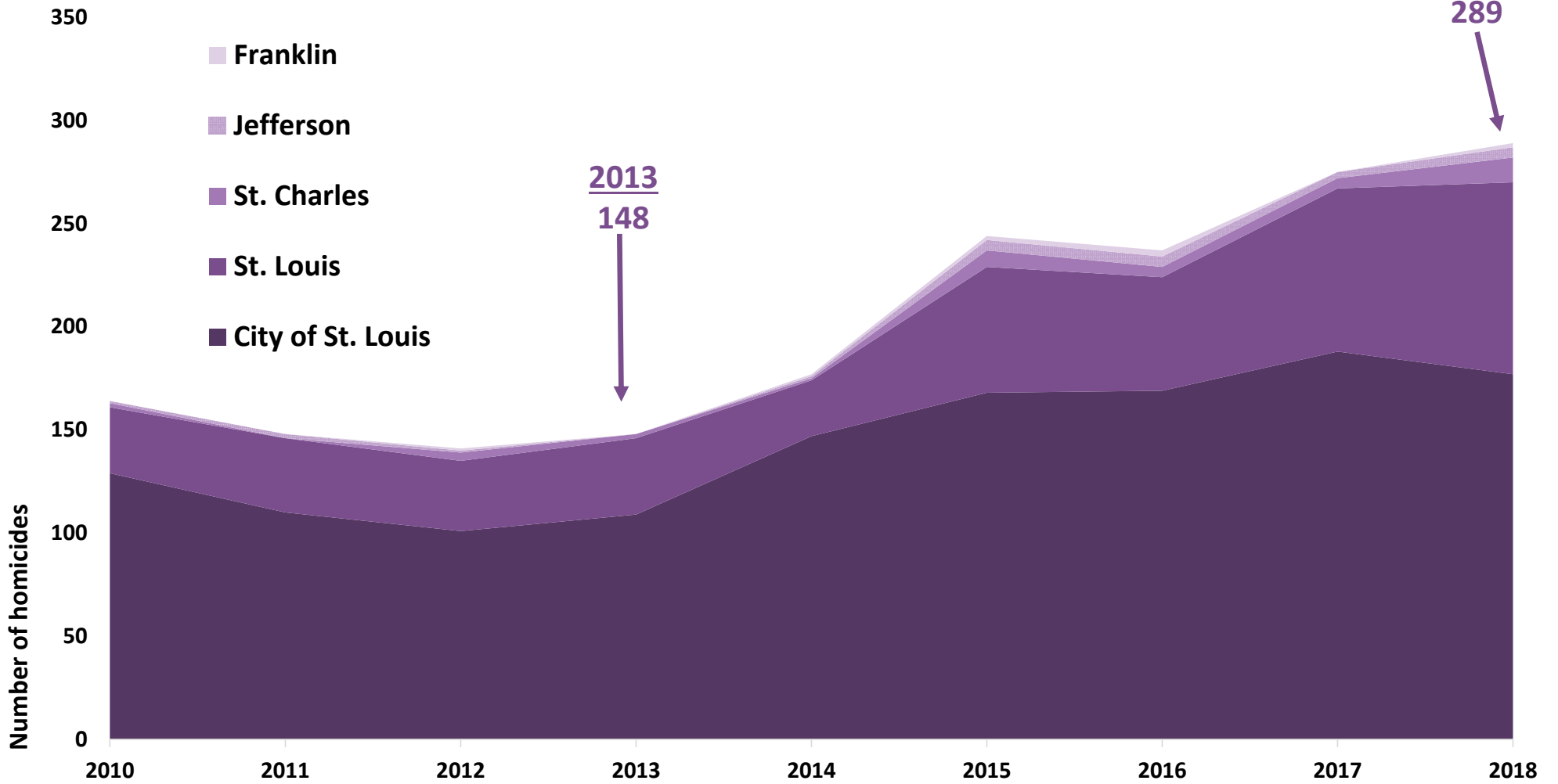
1	St. Louis	91.3
2	Memphis	89.1
3	Virginia Beach	89.0
4	Indianapolis	87.3
5	Chicago	86.5
6	Milwaukee	86.3
7	Kansas City	85.9
8	Birmingham	85.3
9	New Orleans	84.5
10	Nashville	83.2
11	Cincinnati	82.9
12	Richmond	82.7
13	Columbus	82.5
14	Baltimore	82.4
15	Atlanta	82.1
16	Louisville	81.8
17	Pittsburgh	80.3
18	Miami	79.7
19	Philadelphia	79.3
20	Dallas	79.0
21	Detroit	78.9
22	Charlotte	78.3
23	Cleveland	78.2
24	Jacksonville	78.2
25	Houston	78.1
26	Buffalo	77.4
27	San Antonio	77.1
28	Orlando	76.7
29	San Francisco	75.6
	<b>United States</b>	<b>74.5</b>
30	Phoenix	73.8
31	Los Angeles	73.7
32	Riverside	71.3
33	Oklahoma City	70.6
34	Austin	70.4
35	Salt Lake City	70.0
36	Hartford	69.8
37	Tampa	69.1
38	Las Vegas	68.8
39	Washington, D.C.	67.3
40	Seattle	66.7
41	Raleigh	65.9
42	Boston	65.0
43	Minneapolis	64.4
44	Sacramento	62.4
45	New York	61.0
46	Denver	60.7
47	Portland	57.1
48	San Jose	54.7
49	San Diego	52.9
50	Providence	51.5

Source: Centers for Disease Control and Prevention



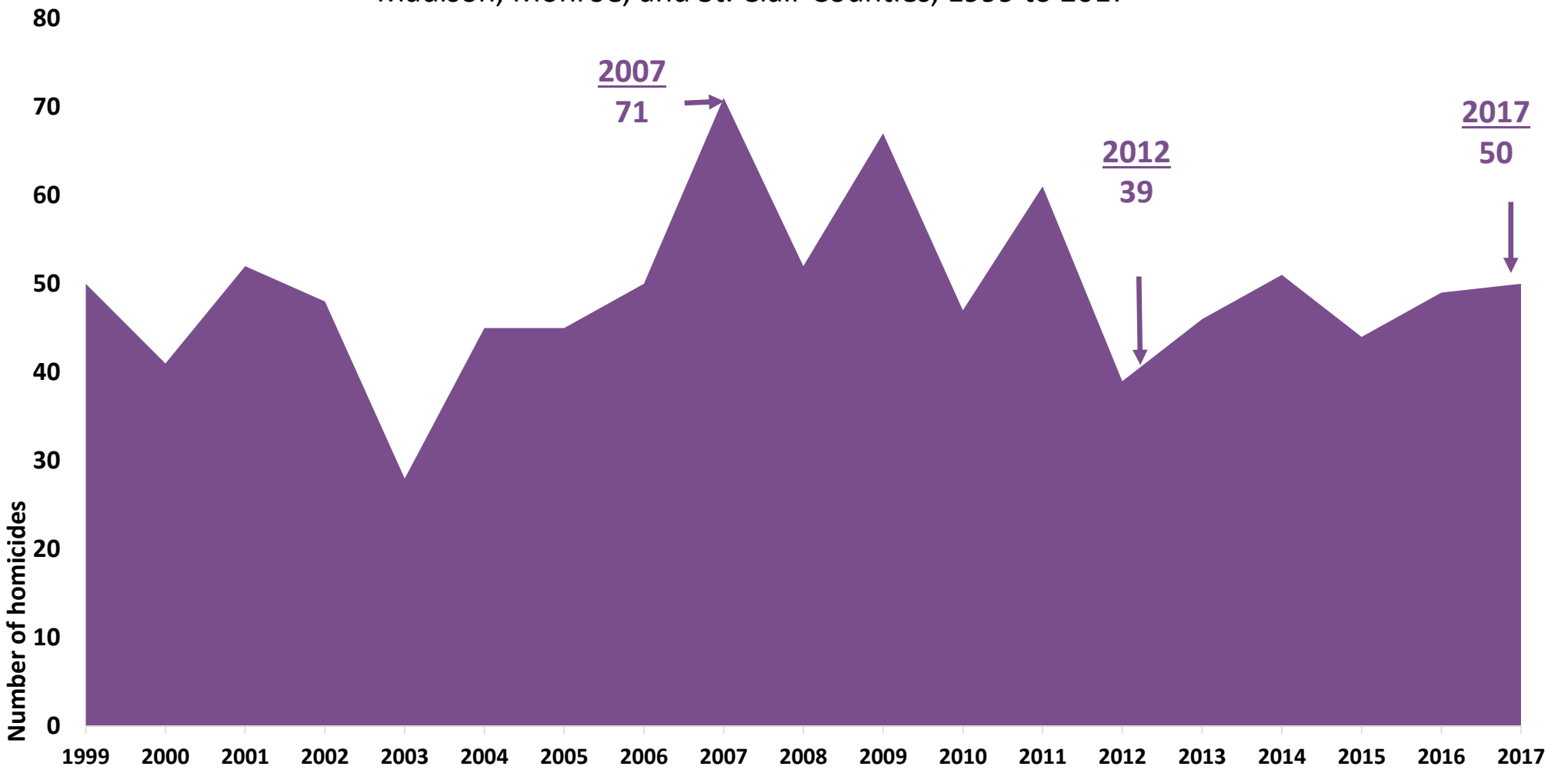
# Homicides

Missouri Counties in St. Louis Region, 2010 to 2018



# Homicides

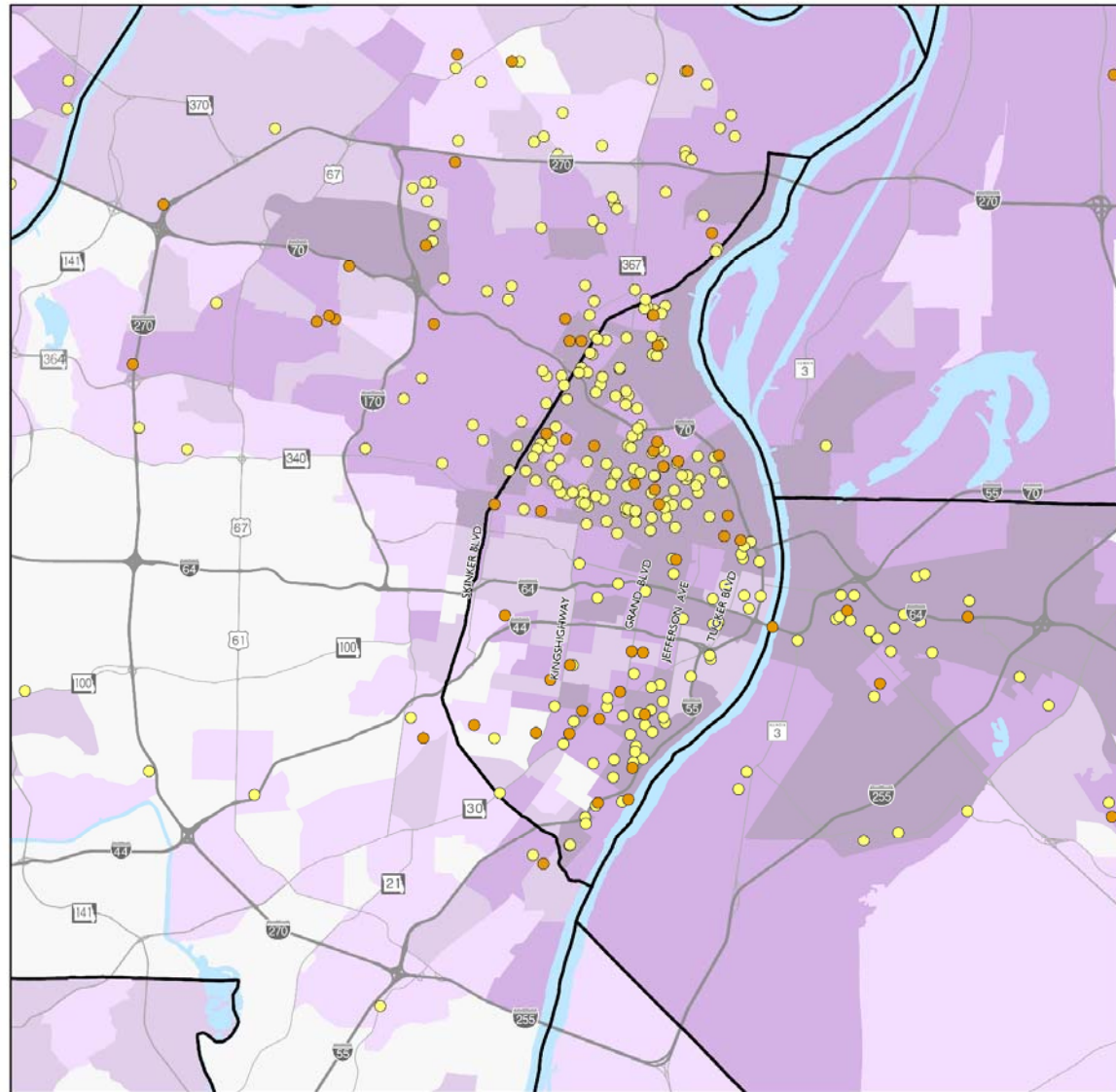
Madison, Monroe, and St. Clair Counties, 1999 to 2017



Source: Centers for Disease Control and Prevention

# Poverty Rate and Homicides

St. Louis Metropolitan Area, 2018



## Percent of Population Living in Poverty

- Over 30 Percent
- 15 to 30 Percent
- 10 to 15 Percent
- 5 to 10 Percent
- 0 to 5 Percent

## Other Map Items

- 1 Dot = 1 Homicide (Firearm Related)
- 1 Dot = 1 Homicide (Other)
- Interstate Highway
- Major Road
- County Boundary
- River / Lake

Poverty data is depicted by 2010 Census tracts. Tract boundaries are not shown. Homicide locations are approximate.



Sources: U.S. Census Bureau, American Community Survey, 5 Year Estimates, 2013-2017; St. Louis Post-Dispatch, 2019



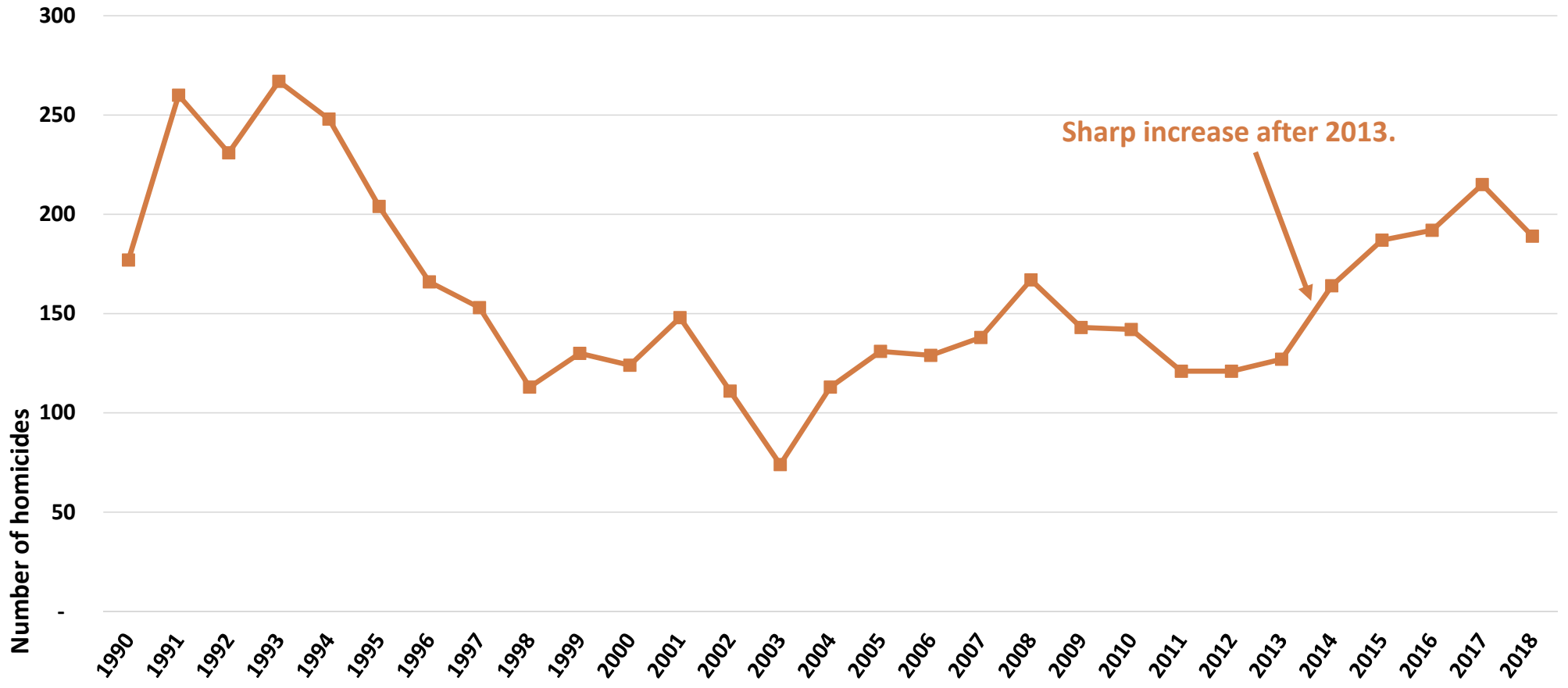
EAST-WEST GATEWAY  
Council of Governments





# Central City Homicides

City of St. Louis, 1990 to 2018

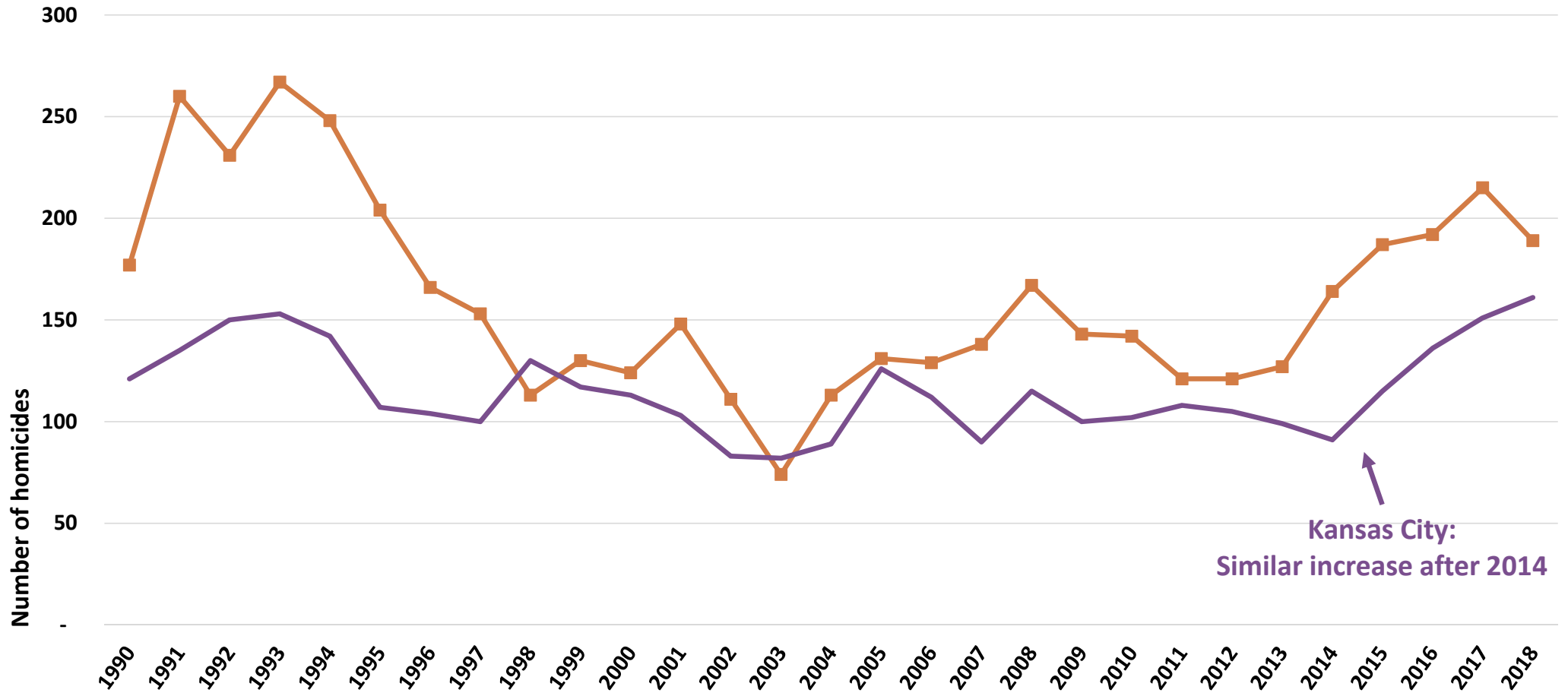


Source: New York University Marron Institute of Public Management: [americanviolence.org](http://americanviolence.org)

# Central City Homicides

Cities of St. Louis and Kansas City, 1990 to 2018

—■ City of St. Louis — City of Kansas City

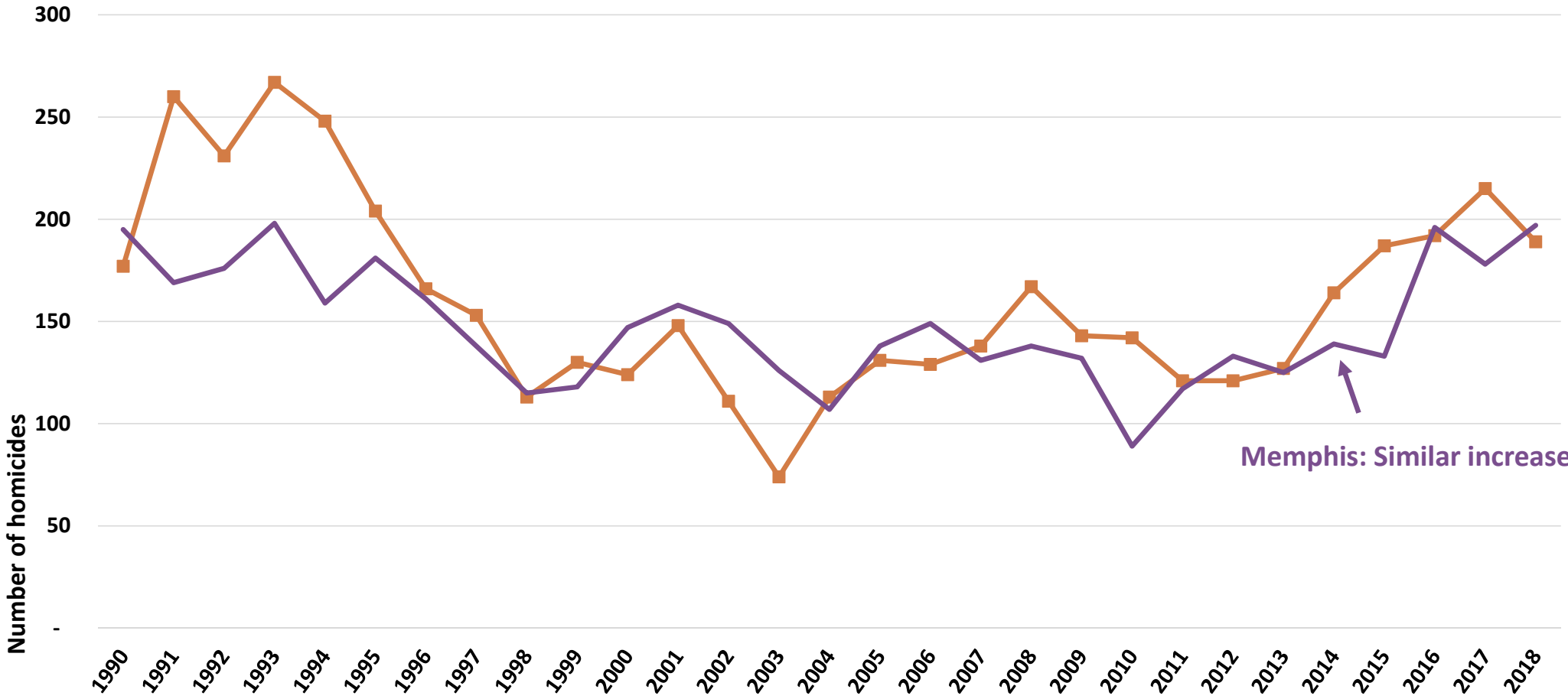


Kansas City:  
Similar increase after 2014

# Central City Homicides

Cities of St. Louis and Memphis, 1990 to 2018

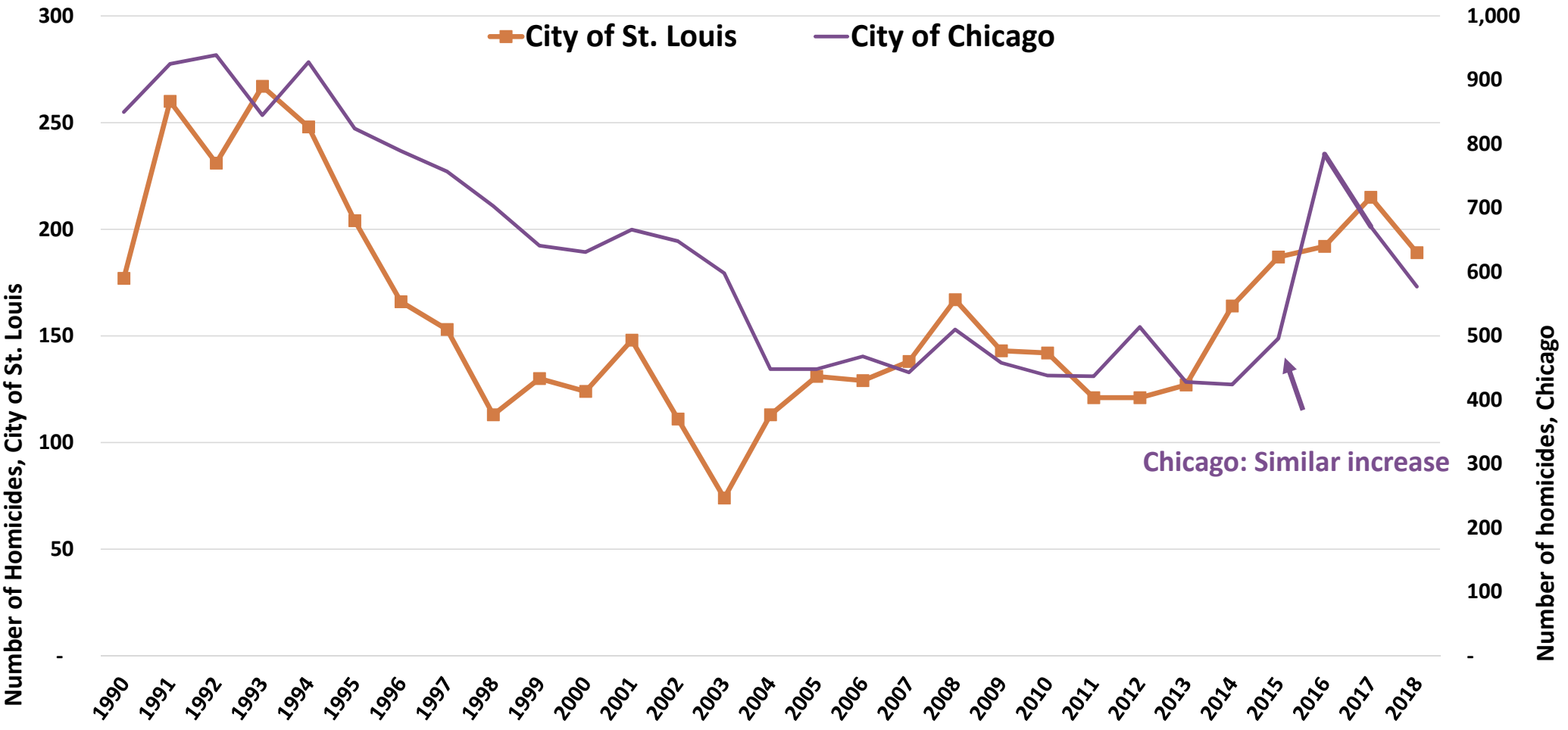
City of St. Louis City of Memphis



Source: New York University Marron Institute of Public Management: [americanviolence.org](http://americanviolence.org)

# Central City Homicides

## Cities of St. Louis and Chicago, 1990 to 2018

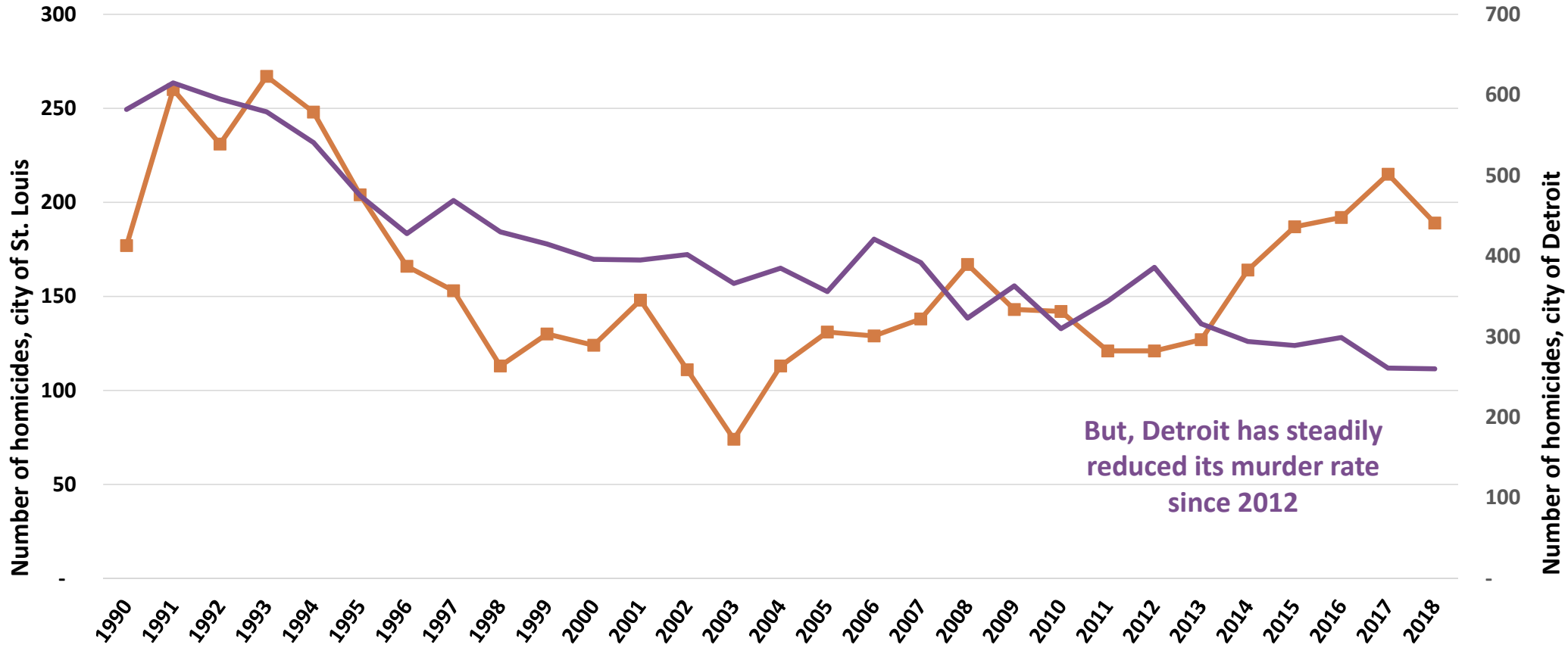


Source: New York University Marron Institute of Public Management: [americanviolence.org](http://americanviolence.org)

# Central City Homicides

Cities of St. Louis and Detroit, 1990 to 2018

City of St. Louis      City of Detroit



But, Detroit has steadily reduced its murder rate since 2012





# Where We Stand: 8th Edition

How does St. Louis compare to our peer metro regions?



[www.ewgateway.org/www](http://www.ewgateway.org/www)


Subscribe to the email list  
[wws@ewgateway.org](mailto:wws@ewgateway.org)



**WHERE WE STAND**

The Strategic Assessment of the St. Louis Region

8th Edition 2018



EAST-WEST GATEWAY Council of Governments  
Creating Solutions Across Jurisdictional Boundaries