

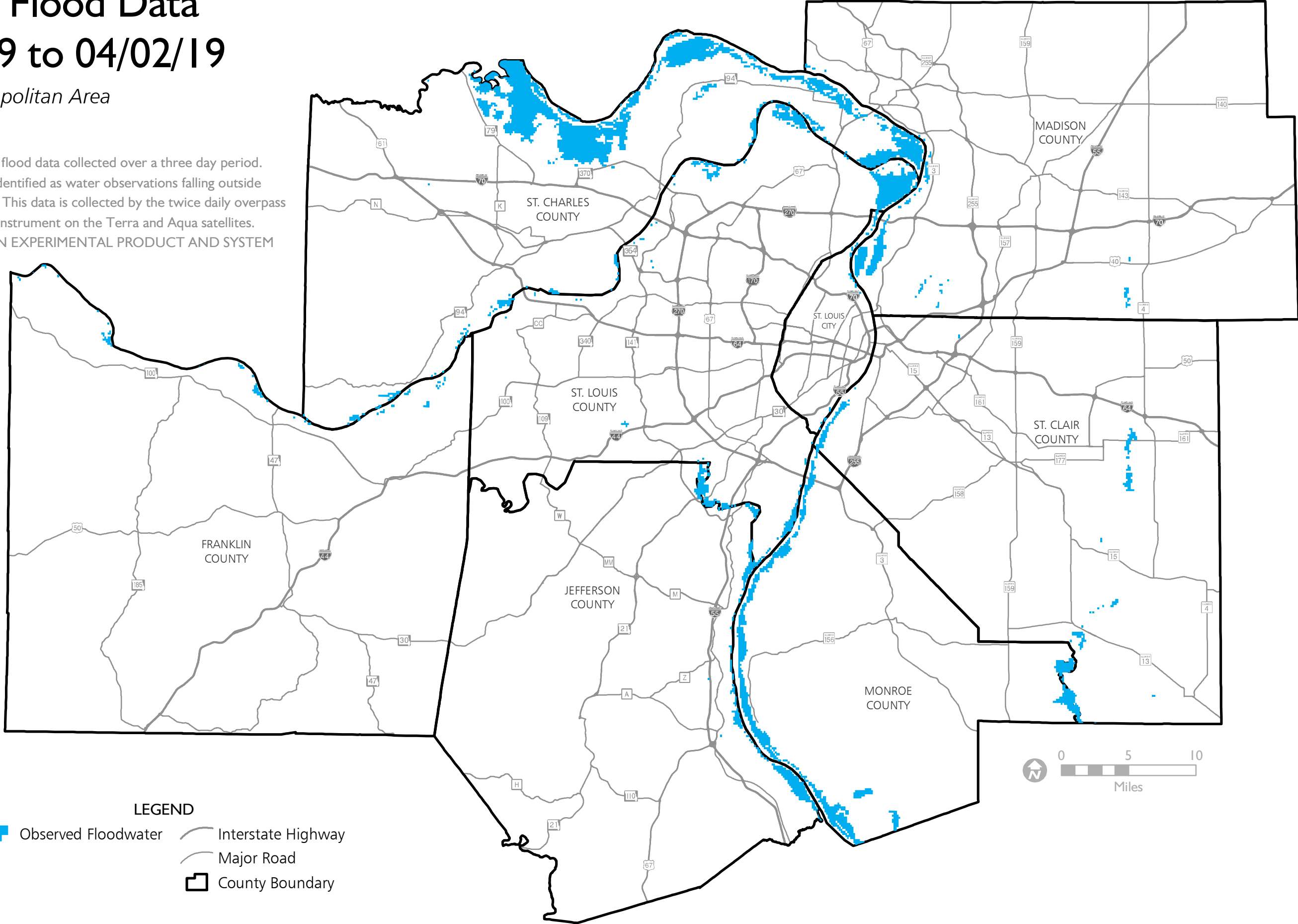
Satellite Flood Data

03/31/19 to 04/02/19

St. Louis Metropolitan Area

April 2019

This map shows flood data collected over a three day period. Flood water is identified as water observations falling outside normal water levels. This data is collected by the twice daily overpass of the MODIS instrument on the Terra and Aqua satellites. NOTE: THIS IS AN EXPERIMENTAL PRODUCT AND SYSTEM



LEGEND

- Observed Floodwater
- Interstate Highway
- Major Road
- County Boundary

Sources: NASA Goddard's Hydrology Laboratory;
Dartmouth Flood Observatory;
East-West Gateway Council of Governments