

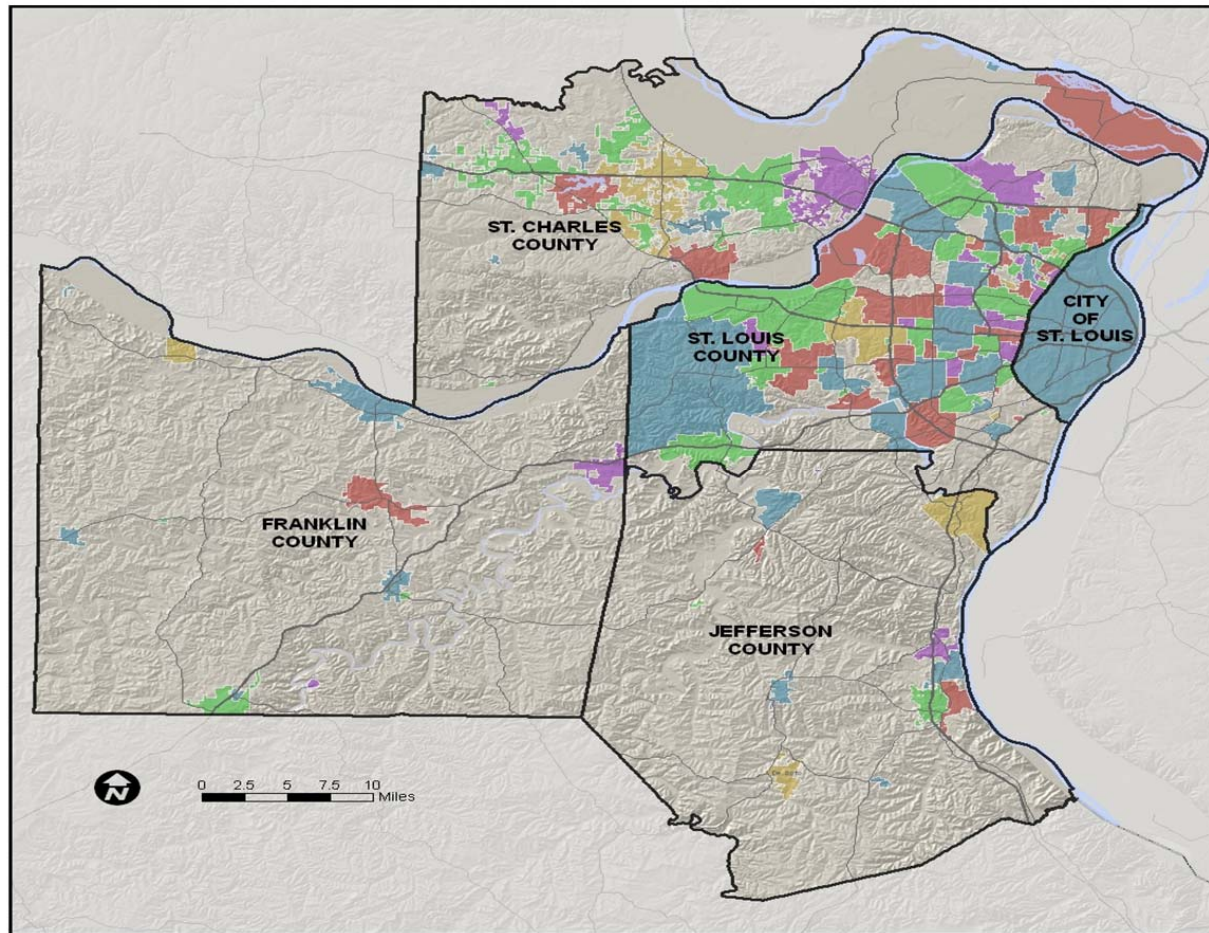


St. Louis Regional Hazard Mitigation Plan 2020 - 2025

The Update

- The St. Louis Regional Hazard Mitigation Plan encompasses *natural* hazards, floods, wildfires, earthquakes, tornados, etc. (*not* manmade disasters).
- The Plan is updated every 5 years and approved by SEMA and FEMA. Partner participation is mandatory for approval.
- The Plan is regional, covering the Missouri counties of: St. Louis, Jefferson, Franklin, St. Charles, and the City of St. Louis.
 - Does not include Illinois. IEMA does their plans county by county.
- The Plan must be adopted by every jurisdiction that wants to apply for disaster mitigation funds.

187 Jurisdictions Covered by Plan




What Hazards?

- Floods
- Drought
- Wildfires
- Earthquakes
- Severe weather
- Dam/levee failures



What does the Plan do?

- The Hazard Mitigation Plan identifies recommended mitigation strategies to reduce or eliminate the impacts caused by a natural hazard event
 - Plan identifies resources, assets at risk, and strategies, and discusses impact of disasters
 - The Plan must contain actual actions – not suggestions or possibilities
 - **IF** your jurisdiction adopts the new plan by resolution, your community is eligible for SEMA/FEMA disaster mitigation funds
- 

Types of Projects Eligible for SEMA Disaster Mitigation Funding

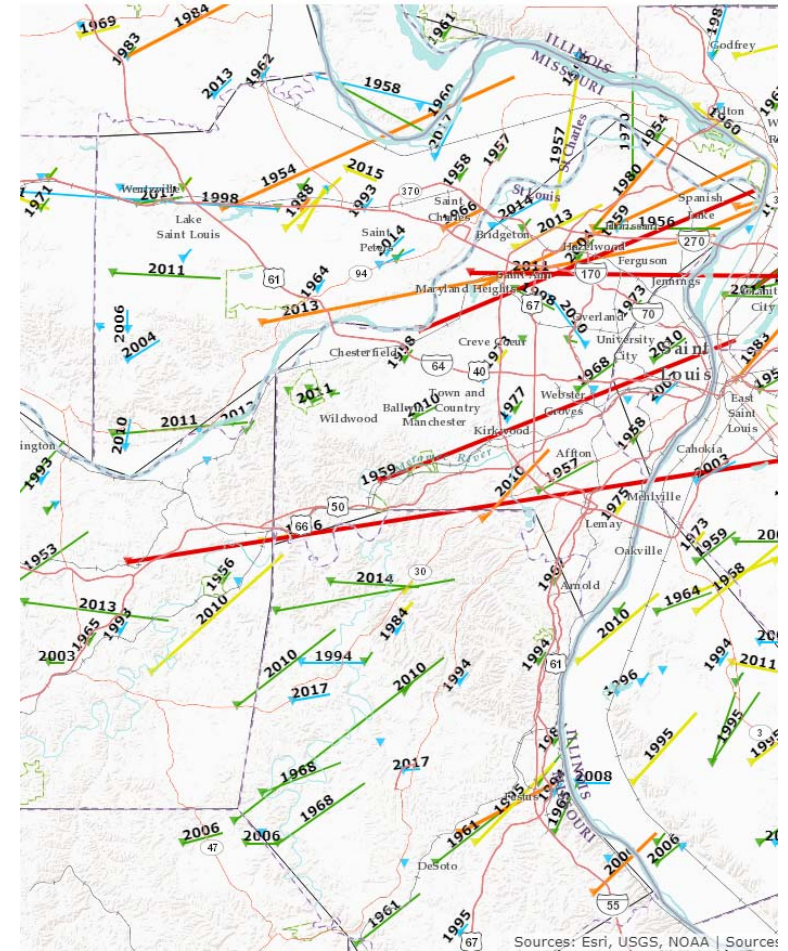
- Flood buyouts – property acquisition with structure demolition/relocation
- Tornado safe rooms
- Low water crossing replacement
- Stream bank stabilization
- Generators
- Local flood risk reduction projects
- Structure elevation



Fish-friendly low water crossing

What's Being Updated

- Data (demographic, development, etc.)
- Risk assessment of natural hazards
- New occurrences of hazard events (since 2014)
- Maps, including new floodplain maps
- New / Reorganized Action Steps



Tornado tracks 1950 - 2017

Timeline

- January 2019 – May 2019: Input from partner jurisdictions, working group meetings, and public meetings and participation
 - June 2019 – August 2019: Data collection and analysis, mapping, plan writing
 - September 2019 – December 2019: Adoption by resolution by partner jurisdictions
 - January 2020: Draft to SEMA
 - May 2020: Final draft to SEMA
- 