



ANNUAL REGIONAL CONGESTION REPORT (2017)

Background

A Congestion Management Process (CMP) is required in metropolitan areas classified as Transportation Management Areas (TMAs).

The CMP is an ongoing process to identify & quantify regional congestion, and to develop and implement strategies to reduce congestion.

The CMP specifies that we develop an annual report on regional congestion.

Selecting Congested Locations

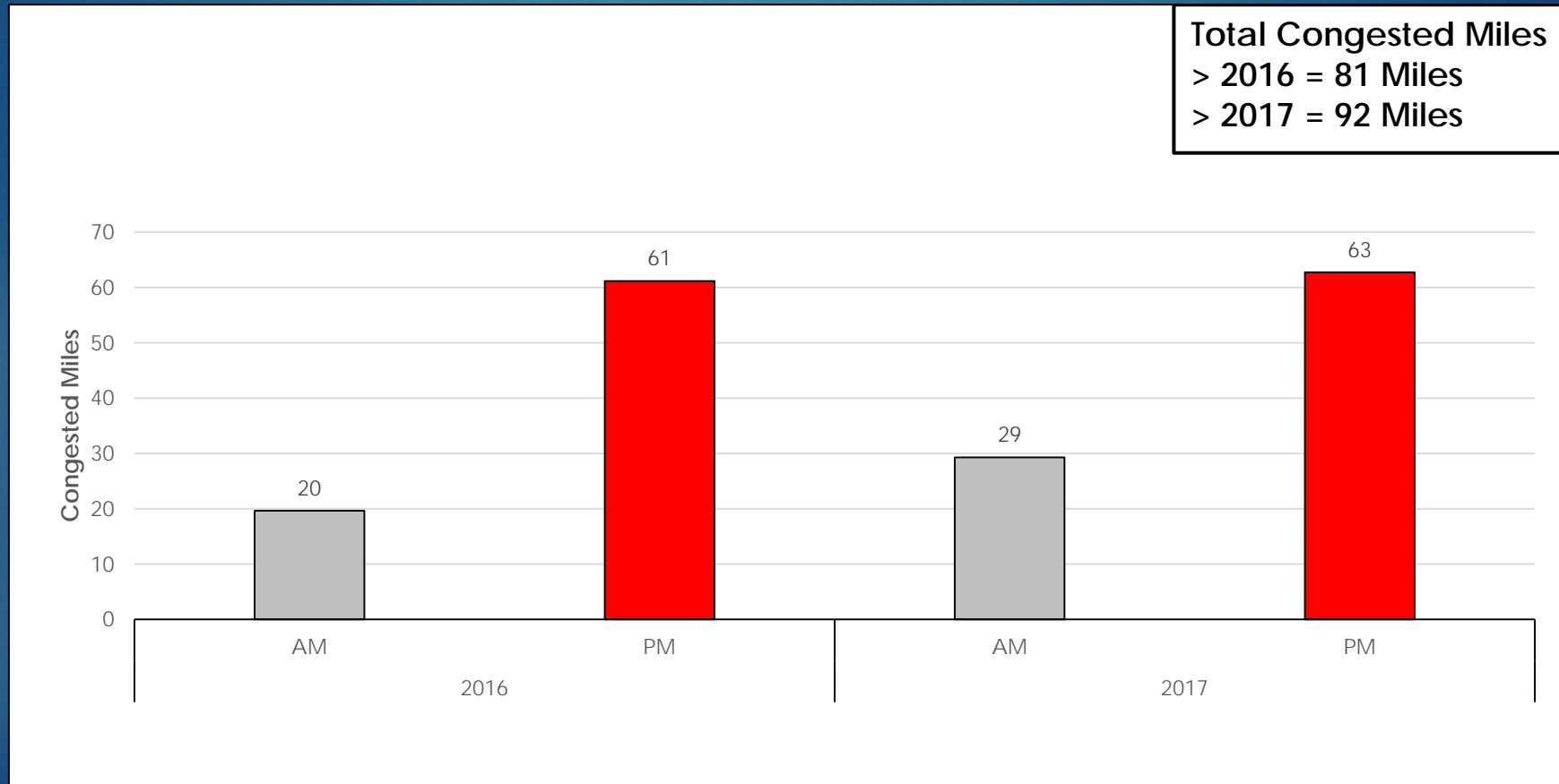
- Analyzed National Highway System Roads
- Compiled data for the entire year
- Analyzed AM and PM Peak Periods
 - 6-9 AM Every Weekday
 - 3-6 PM Every Weekday
- Applied “Speed Index” thresholds
- Identified Segments that exceeded congestion thresholds
 - Moderate, Heavy & Severe Congestion

Congested Locations Identified

No.	Road	2016	2017
1	Arterials	38	59
2	Freeways	37	32
	TOTAL	75	91

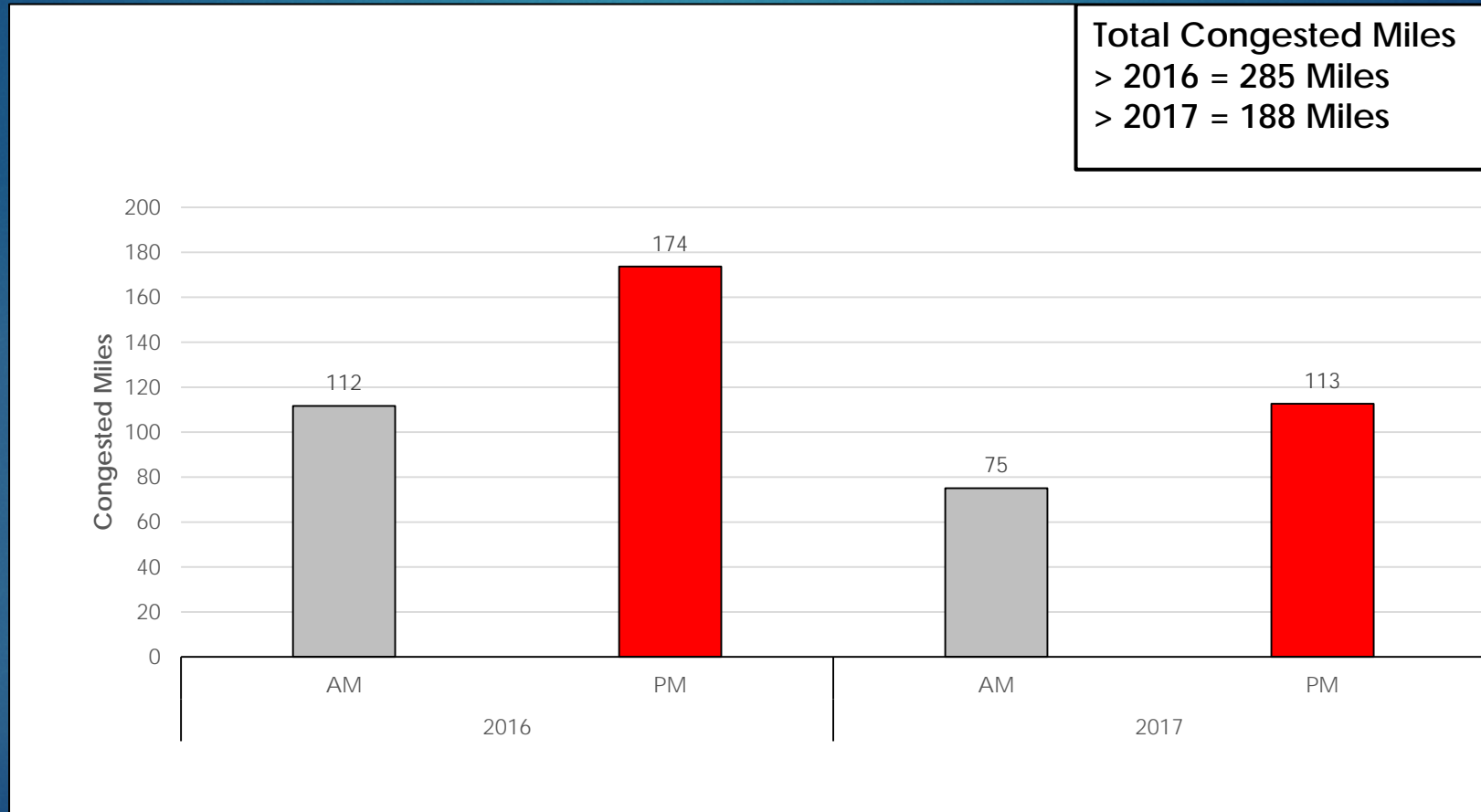
Regional Congested Locations

Arterials (2016-17)



Regional Congested Locations

Freeways (2016-17)



Freeway Miles of Congestion

(2016-17)

No.	Route	2016	2017	% Change
1	I-64	62	55	-11%
2	I-270	59	47	-20%
3	I-70	65	43	-34%
4	I-170	20	13	-36%
5	I-44	35	15	-56%
6	I-55	24	3	-88%
TOTAL		265	176	-33%

CONSTRUCTION !

- 2016 WORK ZONES: 11 TOTAL ON I-44, I-55, I-64, I-70, I-170
- 2017 WORK ZONES: 3 TOTAL ON I-44 AND I-64

COMPLETED PROJECTS

- COMPLETION OF ADDED LANES ON I-64 WEST OF I-270
- PARTIAL COMPLETION OF POPLAR ST. BRIDGE PROJECT

Repeat Congested Arterial Locations (Severity)

- Hampton Ave SB, I-64 to I-44, PM Peak
- Hanley Rd SB, Shaw Park Dr (Forest Park Pkwy) to I-64, PM Peak
 - Jefferson Ave SB, I-64 to I-44, SB PM Peak

Repeat Congested Arterial Locations (Total Impact)

- US-67 (Lindbergh Blvd) NB, I-270 to Halls Ferry Rd, PM Peak
 - MO-94 NB, I-64 to Mid Rivers Mall Dr, PM Peak
- MO-D (Page Ave) WB, I-170 to Schuetz Rd, PM Peak
 - MO-K SB, I-70 to MO-364, PM Peak

Repeat Congested Freeway Locations (Severity)

- I-55 EB-SB, Grand Ave to I-44/I-55, PM Peak
- I-64 EB, Kingshighway to Poplar St Bridge, PM Peak
 - I-64 WB, Kingshighway to I-170, AM Peak
 - I-270 SB, I-70 to I-55, PM Peak
 - I-270 NB, I-55 to I-64, AM Peak
- I-270 EB, McDonnell Blvd to MO-367, PM Peak

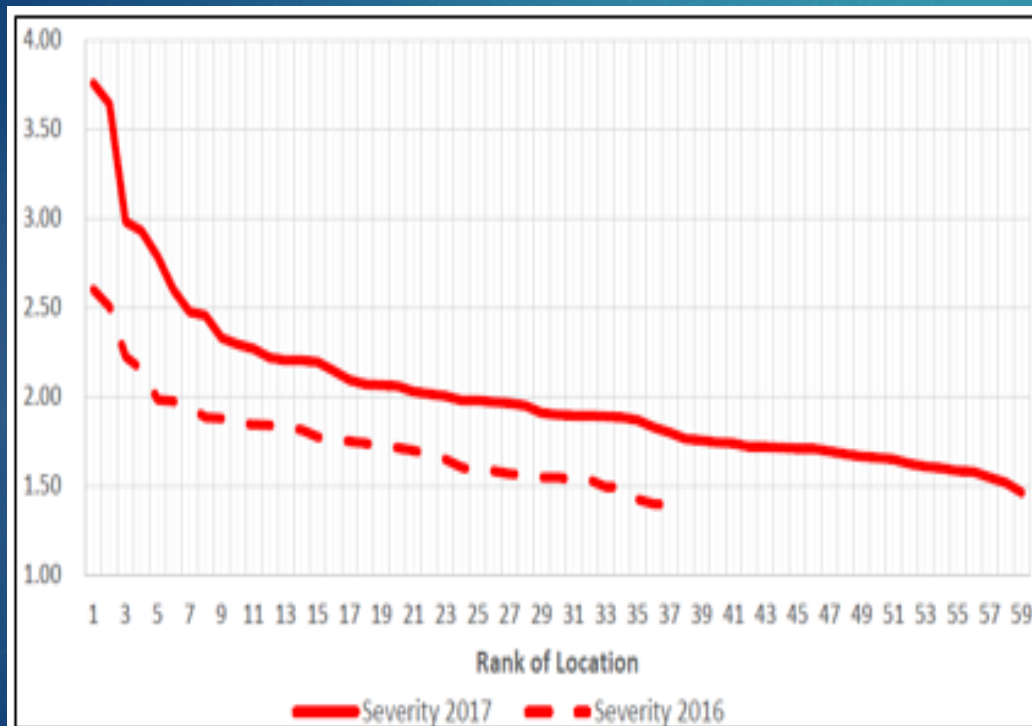
Repeat Congested Freeway Locations (Total Impact)

- I-270 SB, I-70 to I-55, PM Peak
- I-64 EB, Chesterfield Pkwy to McCausland Ave, PM Peak
 - I-64 WB, MO-K to I-70, PM Peak
 - I-270 NB, I-55 to I-64, AM Peak
- I-270 EB, McDonnell Blvd to MO-367, PM Peak
- I-70 EB, Cave Springs to Natural Bridge Rd, AM Peak

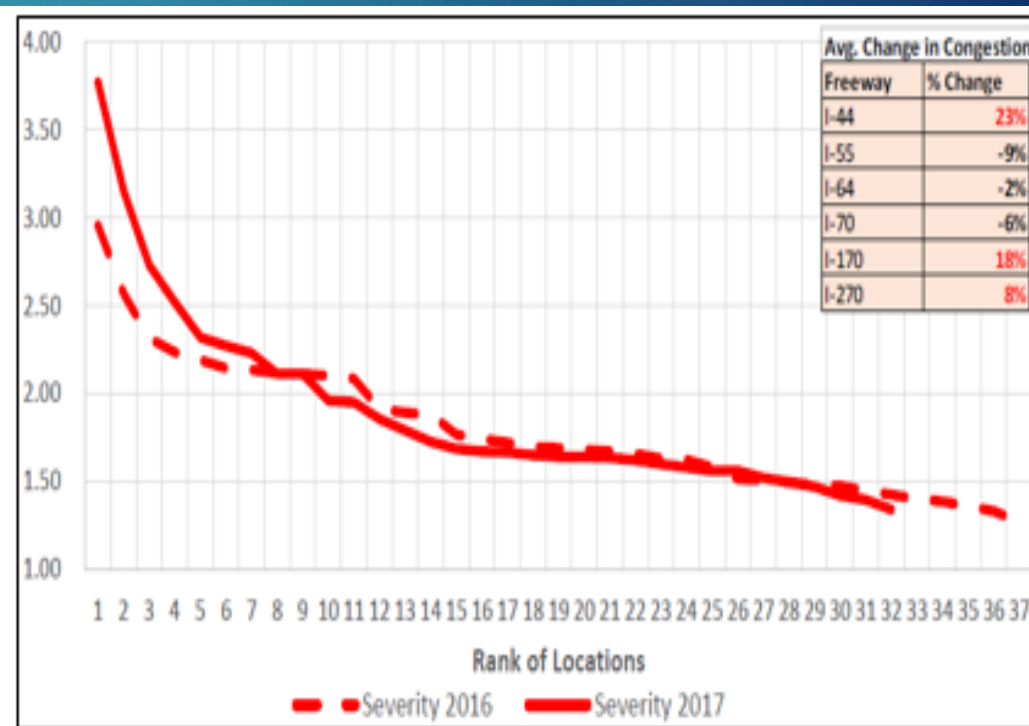
Freeway Rankings (Overall)

- Severity of Congestion

Arterials



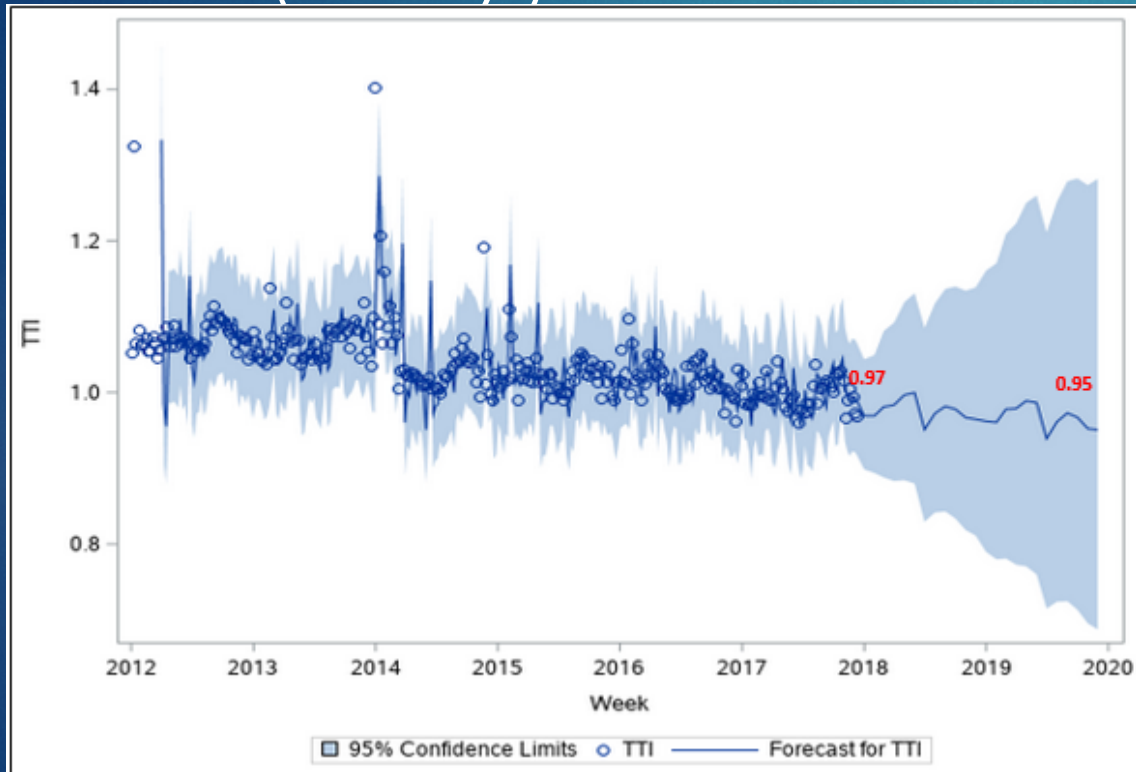
Freeways



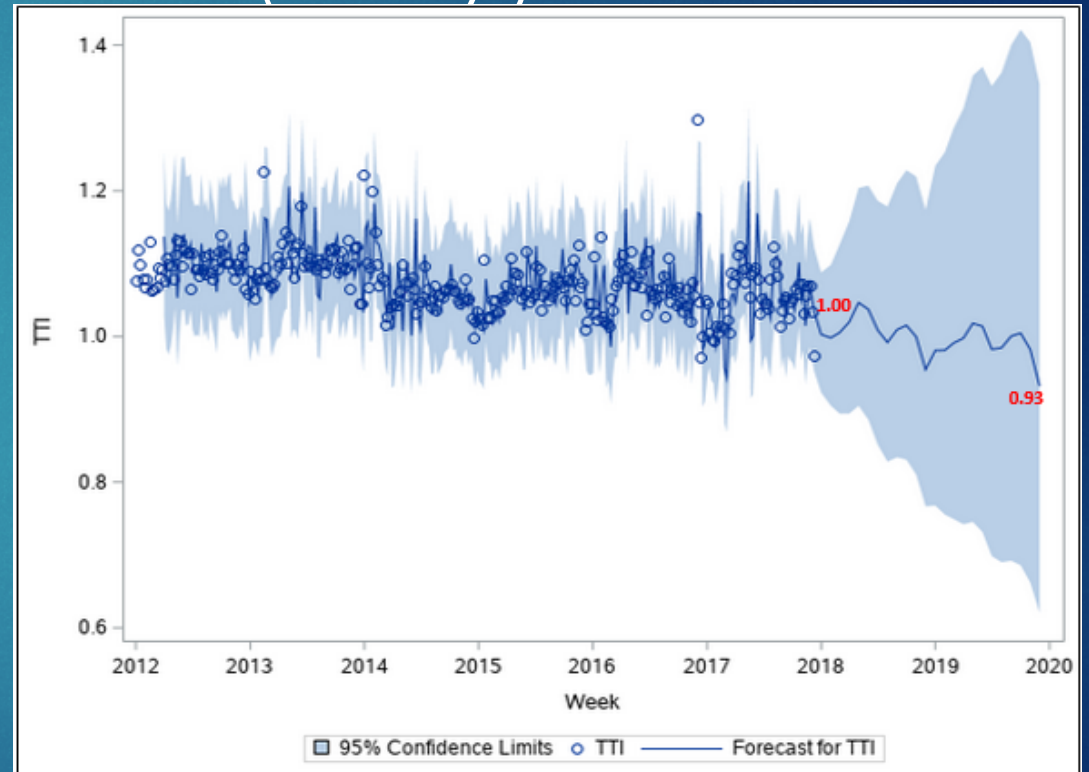
Congested Locations Trend Analysis

- Travel Time Index Trends and Forecast

AM Peak (Freeways)



PM Peak (Freeways)



The Entire Report is Available on EWG's Website:

<https://www.ewgateway.org/wp-content/uploads/2018/08/2017-CMPRpt-Upd-080618.pdf>

Thank You!
Questions?