



March 2018

Poplar Street Bridge Update

Michelle Forneris, P.E.
Area Engineer



Poplar Street Bridge



Improvements





WIDENING THE POPLAR STREET BRIDGE

Missouri and Illinois are looking at adding a fifth eastbound lane to the Poplar Street Bridge. The \$21 million project would ease commuter traffic.



View toward Illinois from Missouri

- 1 The gaps in the concrete support structure are filled in.
- 2 The support is also extended to hold the bridge girder in its new position.
- 3 The eastbound bridge slides over 9 feet.
- 4 The bridge deck on the eastbound bridge is expanded to accommodate a fifth lane.

Poplar Street Widening ...the Slide



Slide Details



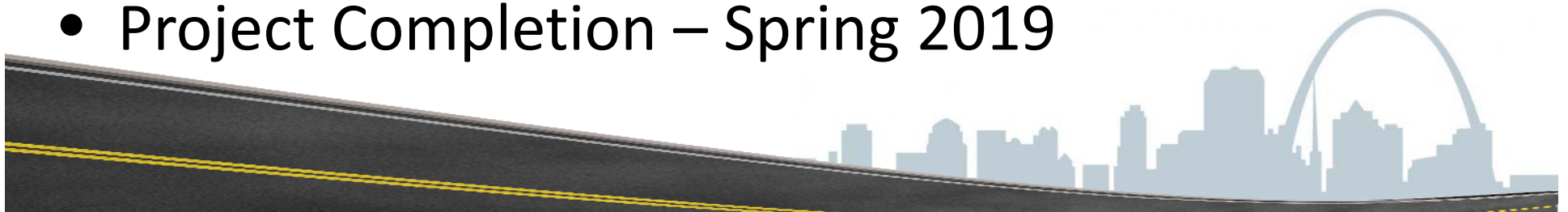
- SHIFTING 9'
- WIDTH = 54'2"
- LENGTH = 2,165'
- WEIGHT – 20.4 MILLION LBS
- 2ND LONGEST BRIDGE SLIDE IN US
 - 1ST PLACE IS HELD BY THE MILTON MADISON BRIDGE SPANNING THE OHIO RIVER



What's Next



- The Slide – March 30 to April 1
- Mid-April – open 2 lanes on the ramp NB I-55/EB I-44 to EB PSB ramp
- April – November 2018
 - tie the 2 bridges together for the added lane
 - 2 weekends of full EB PSB closure to set joints
- All lanes open to traffic - end of November 2018
- Project Completion – Spring 2019





Questions?

Michelle Forneris, P.E.

Area Engineer

Michelle.Forneris@modot.mo.gov

(314) 453 - 1799

