



EAST-WEST GATEWAY
Council of Governments

Creating Solutions Across Jurisdictional Boundaries

MEMORANDUM

TO: Transportation Planning Committee - Missouri Members
FROM: East-West Gateway Staff
DATE: March 2, 2015
SUBJECT: Wednesday, March 2, 2015 meeting

The next meeting of the Missouri subcommittee of the Transportation Planning Committee (TPC) is scheduled for **Wednesday, February 2, 2015 at 2:00 p.m. at East-West Gateway Council of Governments offices.** (Reminder parking is available at Stadium-East Garage)

If you have any questions or concerns regarding the enclosed materials or the upcoming meeting please contact EWGCOG. The agenda for the meeting is as follows:

AGENDA

1. Call to order
2. Functional Class Revisions – Johnnie Smith
3. Connected 2045 – Peter Koeppel
4. FY 2016-2019 TIP (Local Programs) Update – Jason Lange
5. Reasonable Progress – Sonya Pointer
6. Other Business
 - Next Meeting Scheduled for Wednesday, April 1, 2015, 2 PM

Chair
Mark A. Kern
Chairman, St. Clair County Board
Vice Chair
Ken Waller
County Executive
Jefferson County
2nd Vice Chair
Alan Dunstan
Chairman, Madison County Board
Executive Committee
Steve Ehlmann
County Executive
St. Charles County
John Griesheimer
Presiding Commissioner
Franklin County
Terry Liefer
Chairman, Board of Commissioners
Monroe County
Francis G. Slay
Mayor, City of St. Louis
Steve Stenger
County Executive
St. Louis County
Members
Mark Eckert
Vice President,
Southwestern Illinois
Council of Mayors
John Hamm III
President, Southwestern Illinois
Metropolitan & Regional
Planning Commission
Ted Hoskins
St. Louis County
Jim Terry
Jefferson County
John Miller
President, Southwestern Illinois
Council of Mayors
Jack Minner
Madison County
Roy Mosley
St. Clair County
Alvin L. Parks, Jr.
Mayor, City of East St. Louis
Lewis Reed
President, Board of Aldermen
City of St. Louis
Thomas P. Schneider
St. Louis County Municipal League
John White
St. Charles County
Regional Citizens
Richard Kellett
John A. Laker
Brandon Perry
James A. Pulley
Dave Stoecklin
Non-voting Members
Charles Ingersoll
Illinois Department of
Transportation
Edie Koch
Illinois Department of Commerce
and Economic Opportunity
John Nations
Metro
Doug Nelson
Missouri Office of Administration
Dave Nichols
Missouri Department of
Transportation
Executive Director
Ed Hillhouse
Assistant Executive Director
James M. Wild

Gateway Tower
One Memorial Drive, Suite 1600
St. Louis, MO 63102-2451

314-621-4220
618-274-2750
Fax 314-231-6120

webmaster@ewgateway.org
www.ewgateway.org

Missouri Transportation Planning Committee Meeting Notes – March 2015

The Missouri Transportation Planning Committee (TPC) Meeting was held in the Council offices on Wednesday, March 2, 2015 at 2:00 p.m.

Members in Attendance

Ted Medler, St. Louis County

Wesley Stephen, MoDOT

Tracy Beidleman, BSDA/Metro

Steve Ables, St. Louis County Municipal League

Mike Henderson, MoDOT

Lenora Fisher, BPAC representative, CMT

Ron Williams, Franklin County

Jason Jonas, Jefferson County

John Kohler, City of St. Louis

Members Absent

Jessica Medford-Miller, Metro

Hart Nelson, St. Louis RCGA

Rich Bradley, President, Board of Public Service, City of St. Louis

Craig Tajkowski, St. Charles County

John Greifzu, Director of Transportation, St. Charles County

EWGCOG Staff:

Larry Grither, Peter Koeppel, Anna, Musial, Rachael Pawlak, Sonya Pointer

CALL TO ORDER

The meeting was called to order by Ted Medler, Chair.

ITEMS

Functional Class Revisions – Johnnie Smith presented an overview of the requests for changes to the functional classification system. Staff reviewed the applications and recommends approval to accept the 17 applications. These applications are summarized in the memo.

The TPC voted to approve the functional classification change all 17 applications. A motion was made and seconded to approve the recommendations. Motion carried, all voting aye.

Connected 2045 – Peter Koeppel presented an overview of the draft Connected 2045 which is the Long-Range Transportation Plan for the St. Louis Region. Peter also discussed the community engagement done including the keypad polling during the four part speaker series. He stated that the draft plan will be presented to the EAC the following week and for public comment at the upcoming open houses. The final plan will go to the Board of Directors in June for approval.

FY 2016-2019 TIP Development – Jason Lange presented an overview of the call for applications for the Surface Transportation Program- Suballocated (STP-S) and Congestion Mitigation and Air Quality Improvement (CMAQ) Program. The call for applications period began in December and applications were due February 19, 2015. Staff began the evaluation of these projects following the deadline.

There were 85 project applications received for the STP-S program requesting approximately \$115.6 million in federal funds. Based on revenue projections, there is approximately \$50 million in federal funds that would be available for programming.

There were 32 project applications received for the CMAQ program requesting approximately \$50 million in federal funds. Based on revenue projects, there is approximately \$30 million in federal funding available for programming.

Jason also recommended that TPC members share the memo and information about the project applications with their respective elected officials so that they are aware of the project applications that were submitted.

Reasonable Progress update – Sonya Pointer gave an update on the monthly Reasonable Progress report. There were eight Transportation Alternatives Program projects added to the report to reflect the FY 2015 funding round. There were six preliminary engineering (PE) projects added and two construction projects totaling approximately \$1.1 million in federal funds added to this month's report.

Meeting Adjourned.



EAST-WEST GATEWAY
Council of Governments

Creating Solutions Across Jurisdictional Boundaries

Chair
Mark A. Kern
Chairman, St. Clair County Board
Vice Chair
Ken Waller
County Executive
Jefferson County
2nd Vice Chair
Alan Dunstan
Chairman, Madison County Board
Executive Committee
Steve Ehlmann
County Executive
St. Charles County
John Griesheimer
Presiding Commissioner
Franklin County
Terry Liefer
Chairman, Board of Commissioners
Monroe County
Francis G. Slay
Mayor, City of St. Louis
Steve Stenger
County Executive
St. Louis County
Members
Mark Eckert
Vice President,
Southwestern Illinois
Council of Mayors
John Hamm III
President, Southwestern Illinois
Metropolitan & Regional
Planning Commission
Ted Hoskins
St. Louis County
Jim Terry
Jefferson County
John Miller
President, Southwestern Illinois
Council of Mayors
Jack Minner
Madison County
Roy Mosley
St. Clair County
Alvin L. Parks, Jr.
Mayor, City of East St. Louis
Lewis Reed
President, Board of Aldermen
City of St. Louis
Thomas P. Schneider
St. Louis County Municipal League
John White
St. Charles County
Regional Citizens
Richard Kellett
John A. Laker
Brandon Perry
James A. Pulley
Dave Stoecklin
Non-voting Members
Charles Ingersoll
Illinois Department of
Transportation
Edie Koch
Illinois Department of Commerce
and Economic Opportunity
John Nations
Metro
Doug Nelson
Missouri Office of Administration
Dave Nichols
Missouri Department of
Transportation
Executive Director
Ed Hillhouse
Assistant Executive Director
James M. Wild

To: Transportation Planning Committee

From: Staff

Subject: Functional Classification Update

Date: March 2, 2015

Functional classification is the process by which all roadways are grouped into classes according to the type of service they provide. The Federal Highway Administration (FHWA) requires the use of functional classification to determine eligibility for federal funding. There are three principal roadway classifications: arterial, collector, and local roads. Any roadway classified as a rural major collector/urban collector or higher is eligible for federal funds.

In order to accurately reflect changes in land use and travel patterns, staff, along with MoDOT and IDOT, solicits revision applications from member agencies semi-annually and conducts a full system review every three to five years. County and municipal officials from Missouri submitted applications requesting functional classification changes to East-West Gateway during the month of November 2014. Staff worked with MoDOT and local officials to prepare this update.

The applications were reviewed in the context of FHWA guidelines including mobility, accessibility and connectivity. Staff also visited sites to verify conditions. Requested changes are recommended where it was deemed that a road's current classification is no longer consistent with its function. In some cases, it was found that current conditions did no support a change in classification as requested.

At this time, a total of 17 changes are recommended to the system. These changes are summarized on the next page.

Once approved, the update will be sent to MoDOT headquarters for final review and subsequent submittal to FHWA for approval.

Staff Recommendation:

Staff recommends adoption of the functional classification update for the St. Louis region as summarized on the next page.

Gateway Tower
One Memorial Drive, Suite 1600
St. Louis, MO 63102-2451

314-421-4220
618-274-2750
Fax 314-231-6120

webmaster@ewgateway.org
www.ewgateway.org

East-West Gateway November 2014 Functional Classification Application Period

Map # and ID #	Name	Segment Limits	Mileage	County	Requesting Agency	Federal-Aid Urbanized Area Boundary	Current Classification	Recommended Classification
Recommended Functional Classification Modifications - Missouri								
1 - 1	Fernview Drive	MO 340 to Gallagher Road	0.43	St. Louis	Creve Coeur	Urban	Local Road	Minor Collector
1 - 2	Fernview Drive	Gallagher Road to Mason Manor Road	1.79	St. Louis	EWGCOG/MoDOT	Urban	Local Road	Minor Collector
1 - 3	Mason Manor Road	Fernview Drive to Mason Road	0.27	St. Louis	Creve Coeur	Urban	Local Road	Minor Collector
1 - 4	Mosely Road	MO 340 to Ladue Road	1.14	St. Louis	Creve Coeur	Urban	Local Road	Minor Collector
1 - 5	Graeser Road	MO 340 to Ladue Road	1.25	St. Louis	EWGCOG/MoDOT	Urban	Major Collector	Minor Collector
2 - 1	Ashbrook Drive	Cabot Drive to Chambers Road	0.61	St. Louis	Bellefontaine Neighbor	Urban	Local Road	Minor Collector
2 - 2	Cabot Drive	Ashbrook Drive to Coburgs Land Drive	0.08	St. Louis	EWGCOG/MoDOT	Urban	Local Road	Minor Collector
2 - 3	Coburgs Land Drive	Cabot Drive to Chambers Road	0.57	St. Louis	EWGCOG/MoDOT	Urban	Major Collector	Local Road
2 - 4	Coburgs Land Drive	Bellefontaine Road to Cabot Drive	0.53	St. Louis	EWGCOG/MoDOT	Urban	Major Collector	Minor Collector
3 - 1	Planned Lake St. Louis Boulevard Extension	SH N to Paul Renaud Street	0.54	St. Charles	O'Fallon	Urban	Undeveloped Land/Local Road	Planned Minor Collector
4 - 1	Boyd Road	MO 21 to Old Boyd Road	0.15	Jefferson	De Soto	Urban	Local Road	Major Collector
4 - 2	Old Boyd Road	MO 21 to Boyd Road	0.16	Jefferson	EWGCOG/MoDOT	Urban	Minor Arterial	Local Road
4 - 3	Boyd Road	Main Street to Old Boyd Road	1.38	Jefferson	EWGCOG/MoDOT	Urban	Minor Arterial	Major Collector
5 - 1	Interstate Drive	Hepperman Road to Wilmer Road	0.96	St. Charles	EWGCOG/MoDOT	Urban	Planned Major Collector	Major Collector
5 - 2	Interstate Drive	SH Z to Quail Ridge Parkway	1.03	St. Charles	EWGCOG/MoDOT	Urban	Planned Minor Arterial	Minor Arterial
6 - 1	Planned MO 364	I-64 to MO 94	7.06	St. Charles	EWGCOG/MoDOT	Urban	Planned Expressway	Expressway

East-West Gateway November 2014 Functional Classification Application Period

Map # and ID #	Name	Segment Limits	Mileage	County	Requesting Agency	Federal-Aid Urbanized Area Boundary	Current Classification	Recommended Classification
Recommended Functional Classification Modifications - Missouri								
6 - 2	Planned Bramblett Road realignment	Bramblett Hollow Street to Mexico Road	0.17	St. Charles	EWGCOG/MoDOT	Urban	Planned Major Collector	Major Collector

Functional Classification Update

Missouri Semi-Annual Review Cycle Ending November 30, 2014

Functional Classification Update

Missouri Semi-Annual Review Cycle Ending November 30, 2014

Mileage Change by Classification by County									
--	--	--	--	--	--	--	--	--	--

[illegible]

Map I - City of Creve Coeur, Missouri



LEGEND

- Local
- Interstate
- Expressway
- Principal Arterial
- Minor Arterial
- Major Collector
- Minor Collector

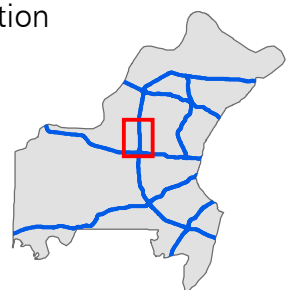
Proposed changes to Functional Classification are indicated by **yellow highlighting** on road segments. This map is entirely within the 2010 urban area boundary.



EAST-WEST GATEWAY
Council of Governments

February 2015

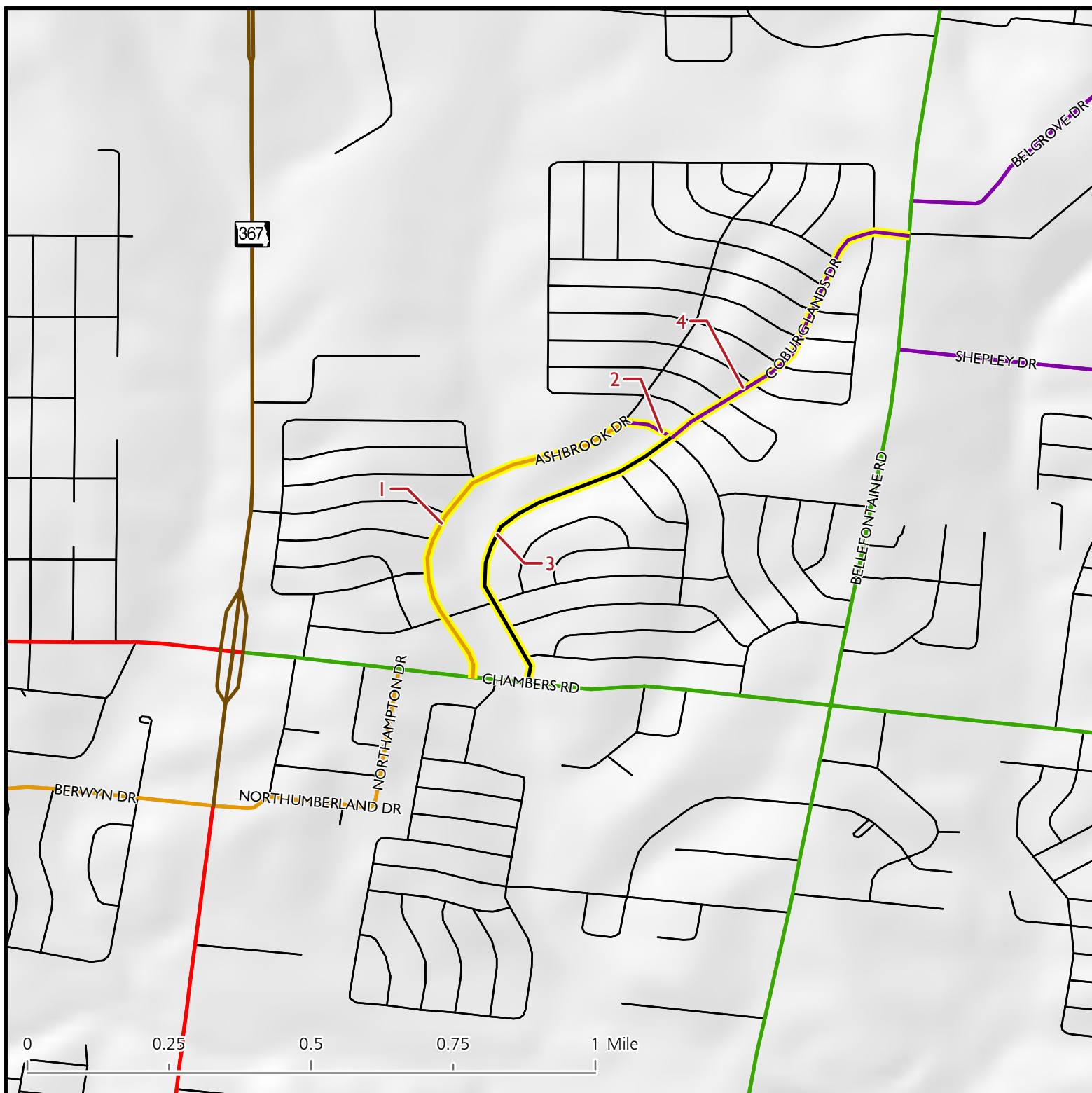
Location



St. Louis County, Missouri



Map 2 - City of Bellefontaine Neighbors, Missouri



LEGEND

- Local
- Interstate
- Expressway
- Principal Arterial
- Minor Arterial
- Major Collector
- Minor Collector

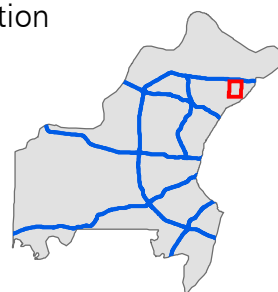
Proposed changes to Functional Classification are indicated by yellow highlighting on road segments. This map is entirely within the 2010 urban area boundary.



EAST-WEST GATEWAY
Council of Governments

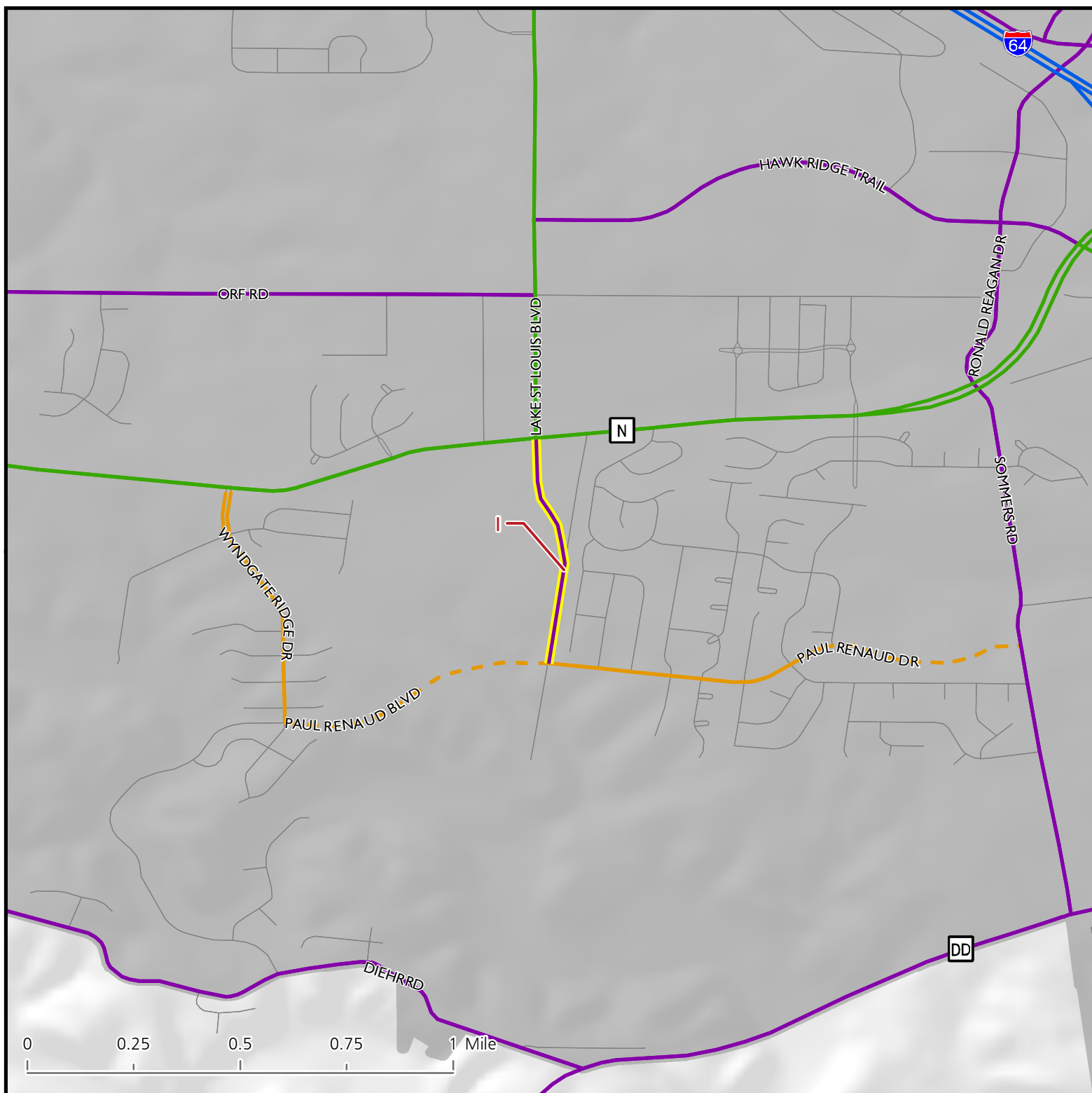
February 2015

Location



St. Louis County, Missouri

Map 3 - City of O'Fallon, Missouri



LEGEND

- Local Roads
- Interstate
- Minor Arterial
- Major Collector
- Minor Collector
- - - Planned Minor Collector
- 2010 Urban Boundary

Proposed changes to Functional Classification are indicated by **yellow highlighting** on road segments.



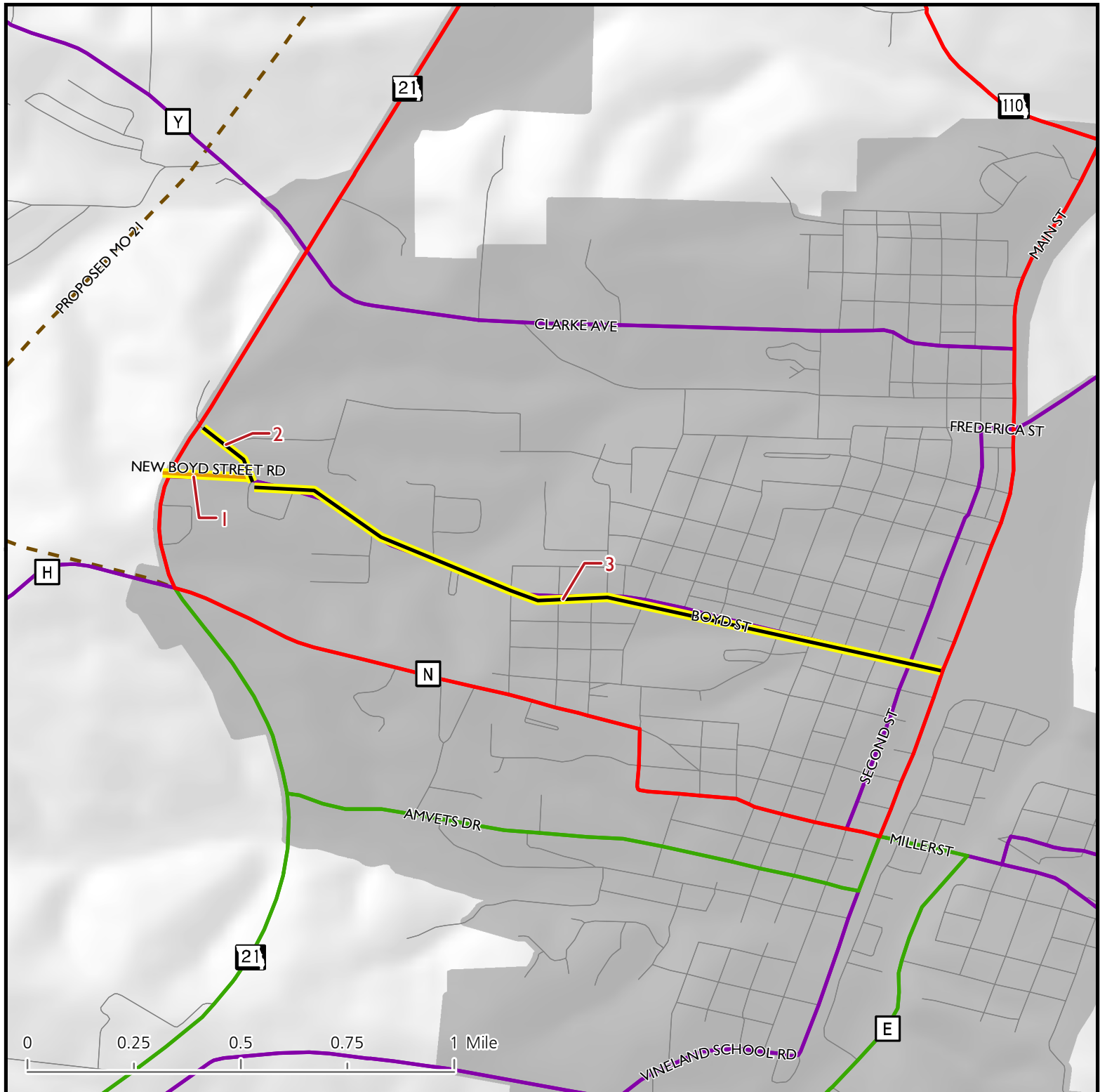
EAST-WEST GATEWAY
Council of Governments

February 2015

Location



Map 4 - City of De Soto, Missouri



LEGEND

- Local Roads
- Interstate
- Principal Arterial
- Minor Arterial
- Major Collector
- Minor Collector
- Planned Expressway
- 2010 Urban Boundary

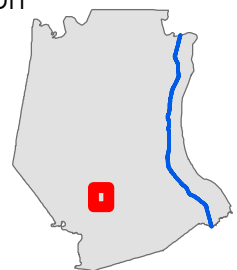
Proposed changes to Functional Classification are indicated by **yellow highlighting** on road segments.



EAST-WEST GATEWAY
Council of Governments

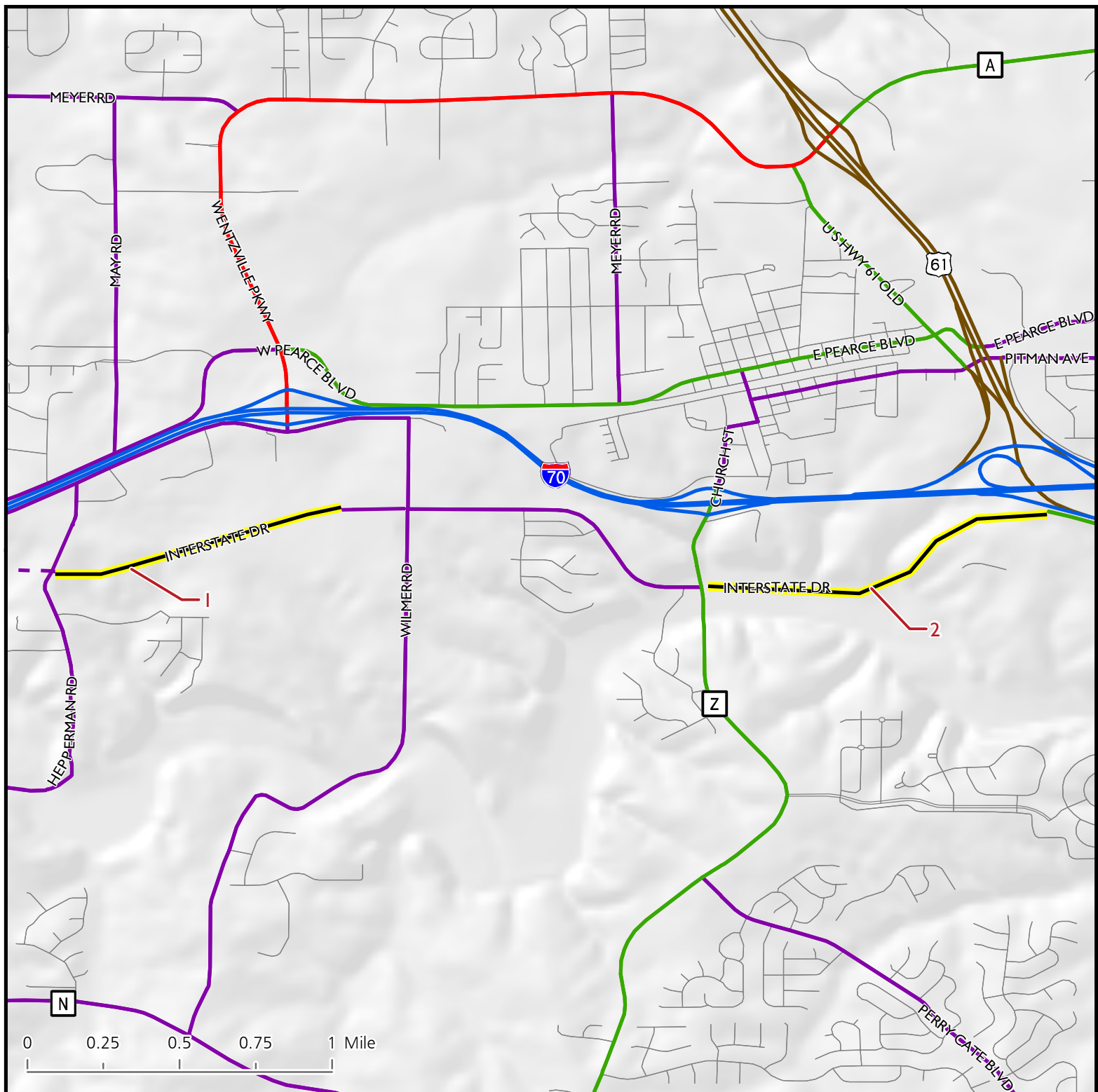
February 2015

Location



Jefferson County, Missouri

Map 5 - City of Wentzville, Missouri



LEGEND

- Local Roads
- Interstate
- Expressway
- Principal Arterial
- Minor Arterial
- Major Collector

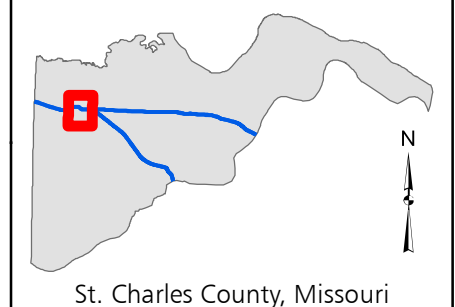
Proposed changes to Functional Classification are indicated by yellow highlighting on road segments. This map is entirely within the 2010 urban area boundary.



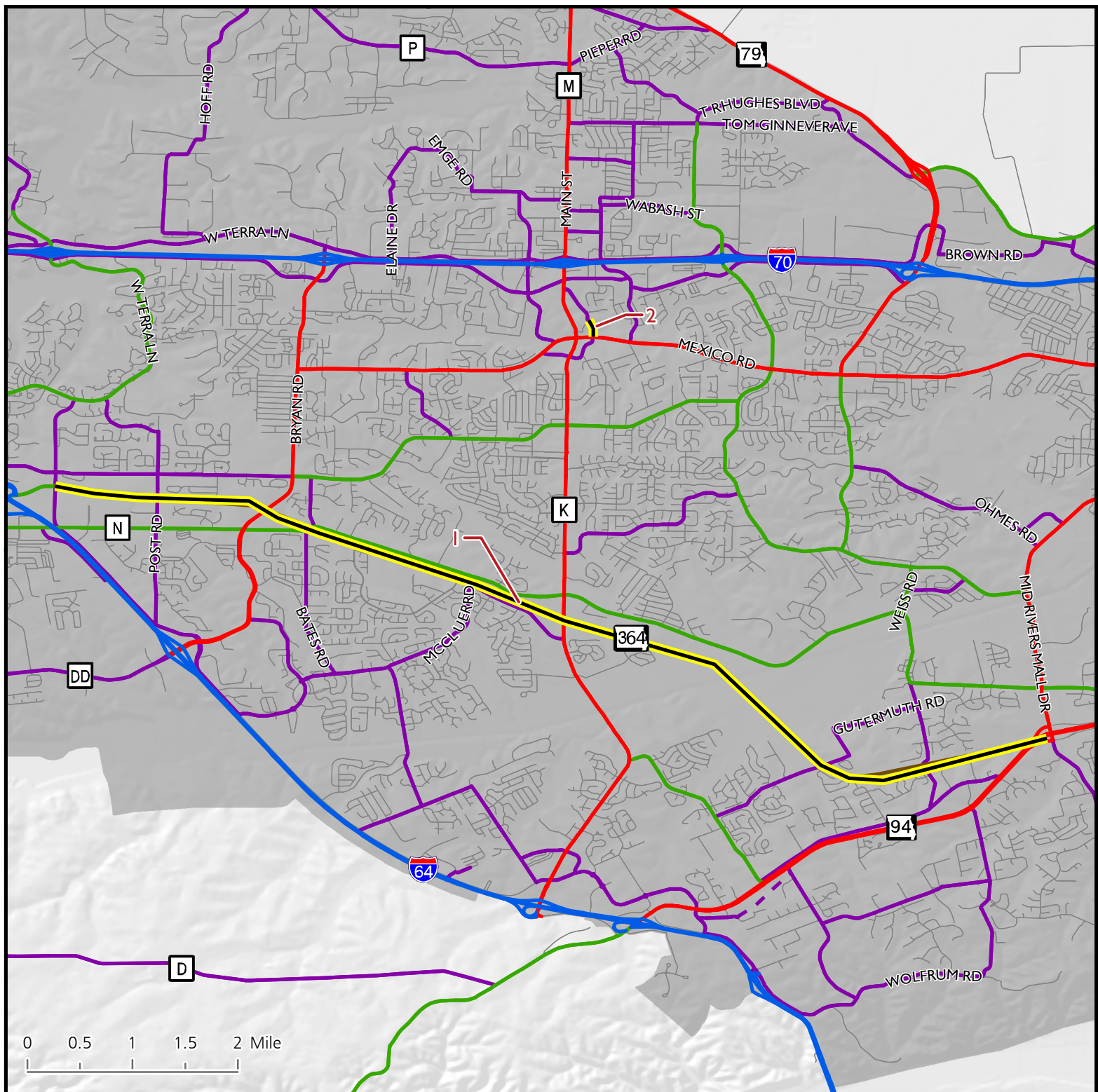
EAST-WEST GATEWAY
Council of Governments

February 2015

Location



Map 6 - City of O'Fallon & St Charles County, Missouri



LEGEND

- Local Roads
- Interstate
- Expressway
- Principal Arterial
- Minor Arterial
- Major Collector
- - - Planned Major Collector
- 2010 Urban Boundary

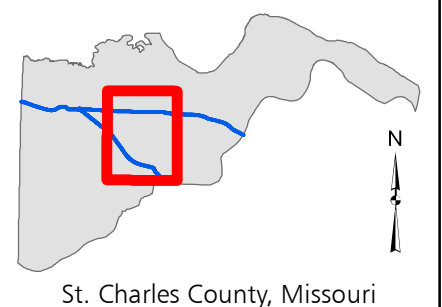
Proposed changes to Functional Classification are indicated by **yellow highlighting** on road segments.



EAST-WEST GATEWAY
Council of Governments

February 2015

Location



St. Charles County, Missouri