

Our Missouri Waters – Meramec River



Agenda

1. Welcome and Introductions
2. Overview of Projects Impacting the Meramec
3. Clean Water: Stormwater & Wastewater
4. Soil & Water Conservation District Programs
5. Strategies for Road Maintenance
6. Breakout Sessions by Topic

Meramec River Issues

- Recreational Use (& Abuse)
- Road Grading Practices
- Erosion on River & Tributaries
- Stormwater Runoff from Development
- Low Water Crossings on Public Roads
- Contamination from Mining Operations
- Gravel & Sedimentation
- Funding

Meramec River Watershed: Community Partnership Project

Tracy Haag

Regional Watershed & Community Services Coordinator

St. Louis Regional Office

tracy.haag@dnr.mo.gov | (314) 416-2452





MISSOURI
DEPARTMENT OF
NATURAL RESOURCES



- ***Mission:*** The mission of the Missouri Department of Natural Resources is to protect our air, land and water; preserve our unique natural and historic places; and provide recreational and learning opportunities for everyone.
- ***Vision for Missouri:*** The Missouri Department of Natural Resources envisions a Missouri where people live and work in harmony with our natural and cultural resources, make decisions that result in a quality environment, and prosper today and in the future.

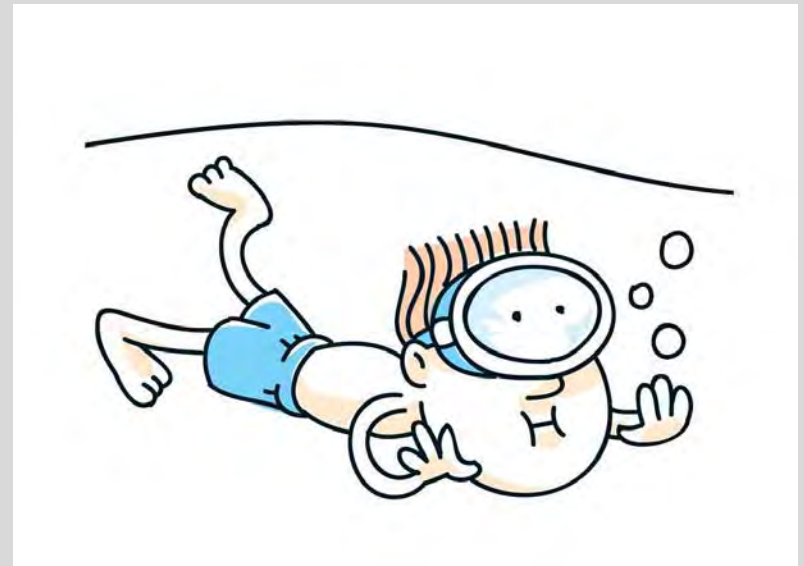


MISSOURI
DEPARTMENT OF
NATURAL RESOURCES

MISSOURI



**NATURAL
RESOURCES**





MISSOURI
DEPARTMENT OF
NATURAL RESOURCES

It takes more



Our Missouri Waters

A watershed based approach to...

- *Better integrate and target our resources and programs*
- *Seek help from local citizens*
- *Maximize overall environmental benefit for water resources*

The mission of the Missouri Department of Natural Resources

***to protect our air, land and water;
preserve our unique natural and
historic places; and provide
recreational and learning
opportunities for everyone.***





MISSOURI
DEPARTMENT OF
NATURAL RESOURCES

What is a Watershed?

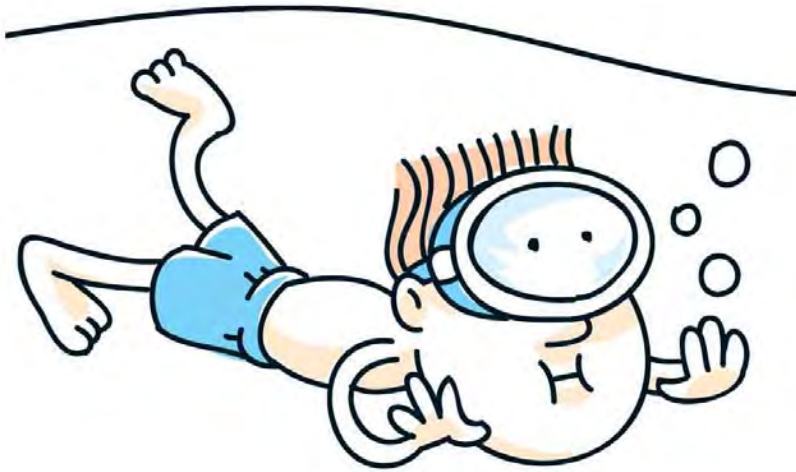
- An area of land where the runoff from rain and snow drain to a particular stream
- Healthy watersheds provide:
 - Plentiful drinking water
 - Fish and wildlife habitat
 - water for
 - Irrigation,
 - industry or
 - recreation





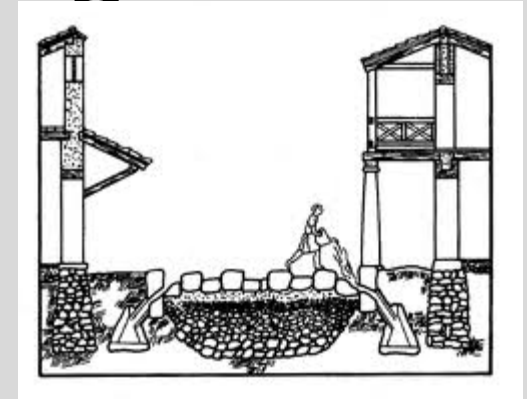
MISSOURI
DEPARTMENT OF
NATURAL RESOURCES

Healthy Watershed



What is Watershed Management?

- Romans practiced watershed management
- Early basin management in the United States included
 - Diversion
 - Irrigation and
 - Flood control

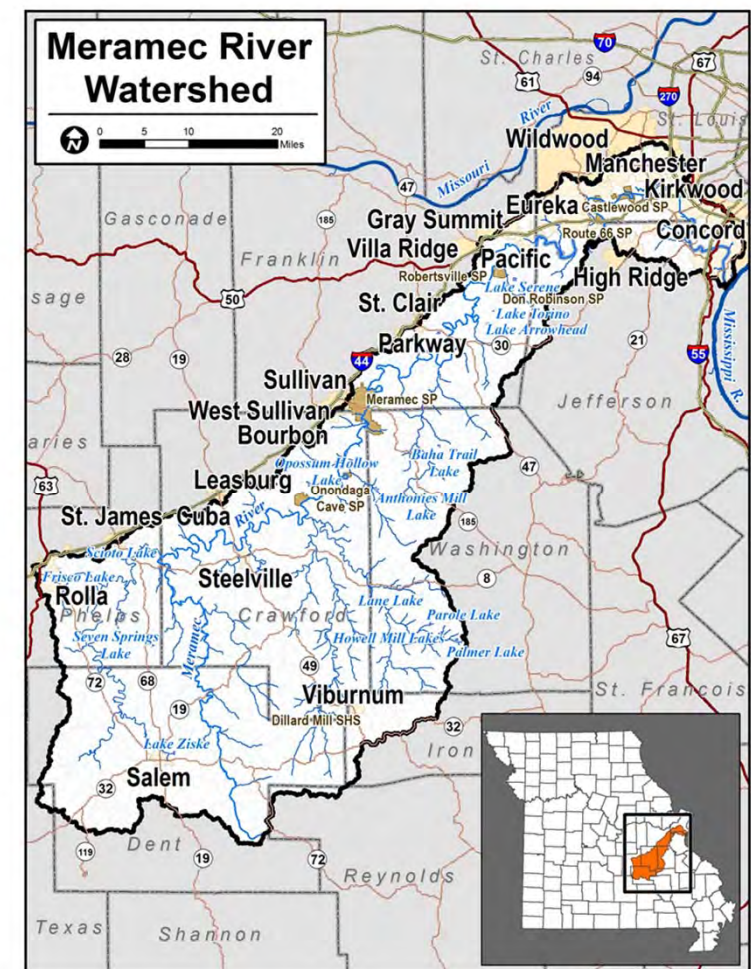


1913 Early Working Conditions Diversion Channel Level



Why focus at the watershed level?

- Provides the basis for coordinating water resource activities over a five year time-frame
- Allows local watershed residents to know in advance when certain coordination activities occur
- Provides an opportunity to utilize and leverage various resources more effectively and efficiently

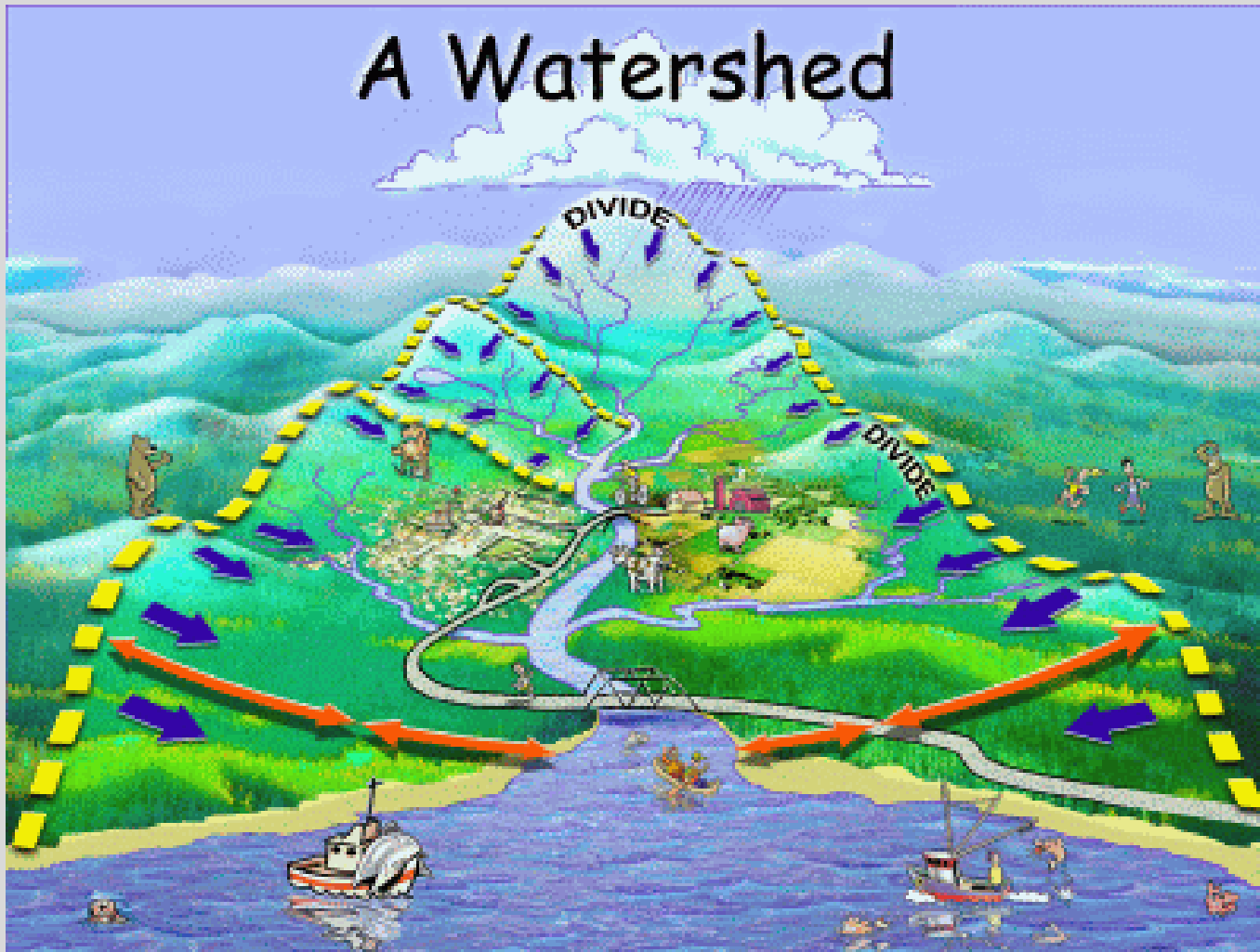




MISSOURI
DEPARTMENT OF
NATURAL RESOURCES

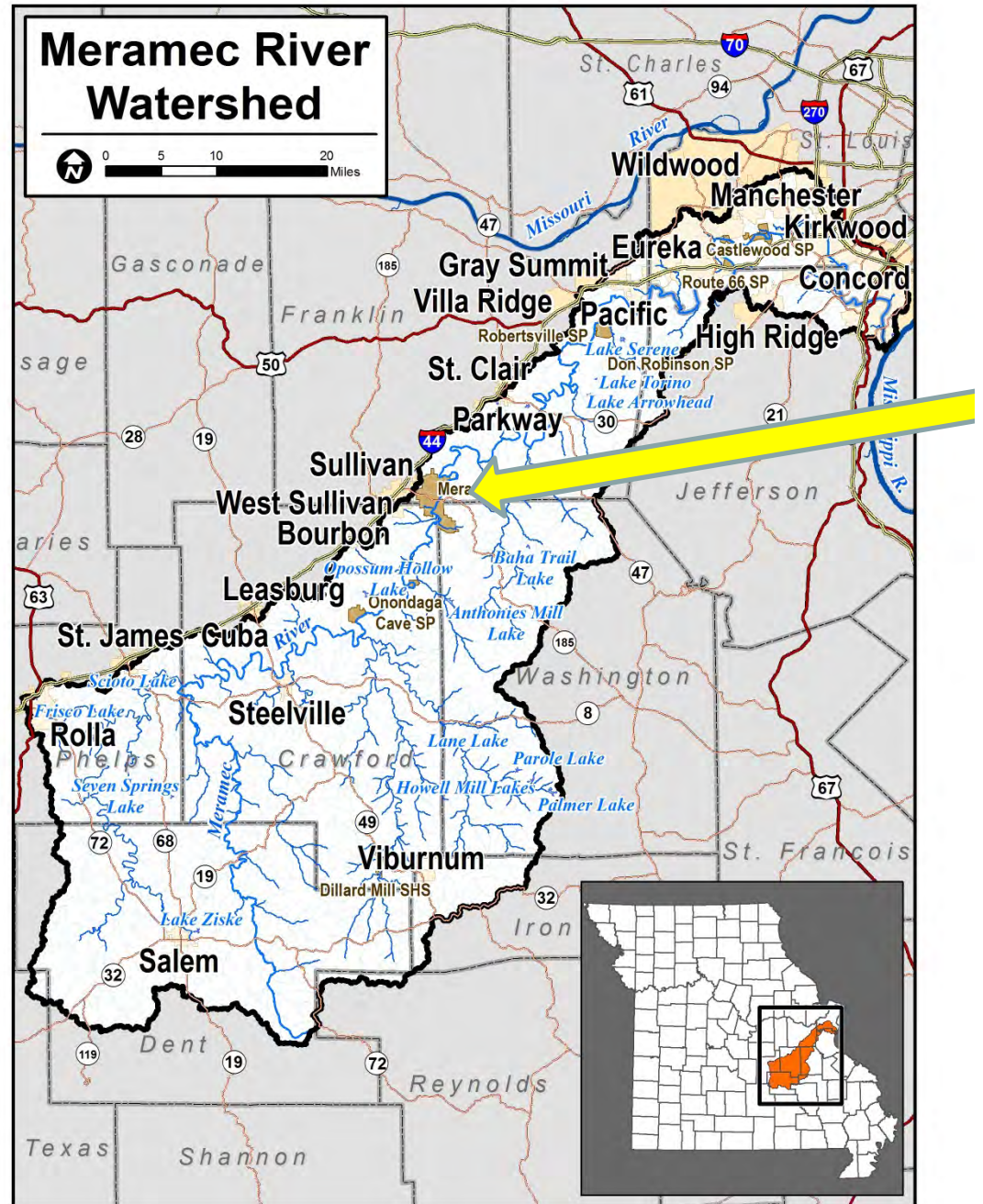
We are all downstream

A Watershed



Meramec River Watershed

- 2,149 miles²
- One of the longest free-flowing waterways in Missouri
- Portions of 10 counties
- 90% Forest, Pasture and cropland; less than 10% Urban



Project Goals:

- Local understanding of water resources
- Build on local leadership for watershed priorities
- Build on local partnerships to find solutions



How do we get there?

- Meramec River meetings
 - Information sharing
 - Learn about natural resources priorities
 - Identify concerns you want to address
- Input from local communities about interests and priorities for the Meramec River and its watershed
 - Move goals forward & work toward solutions
- *Healthy Watershed Plan*

How do we get there?

- Meramec River meetings
 - Information sharing
 - Learn about natural resources priorities
 - What are some projects you want to tackle?
- Input from local communities about interests and priorities for the Meramec River and its watershed
 - Move goals forward & work toward solutions
- *Healthy Watershed Plan*

How do we get there?

- Open House meetings
 - Information sharing
 - Learn about natural resources priorities
 - What are some projects you want to tackle?
- Input from local communities about interests and priorities for the Meramec River and its watershed
 - Move goals forward & work toward solutions
- *Healthy Watershed Plan*

Healthy Watershed Plan: Framework

- Background information on the watershed
- Local Comments/Concerns
- Priorities from local watershed meetings
- Next Steps recommended by local stakeholders

What are the benefits?

- Local resident's shared vision for the watershed
- Provides guidance for future financial and technical support and programs
- Discover opportunities for partnerships
- Protect our local waters

Our Missouri Waters

<http://dnr.mo.gov/omw/>



Missouri
has been



traditionally blessed with abundant and diverse water resources like few other states in the nation. The quality of life for each Missourian can be closely tied to the health of our state's natural resources. Ensuring we are able to enjoy our Missouri waters today as well as ensure the same for future generations is the essence of the Missouri Department of Natural Resources' mission.

Creating a rich legacy for our state's waters can be a daunting task, which is why we simply can't complete this alone. Missouri's waters belong to all of us. The department's **Our Missouri Waters** effort bring

Learn about Watersheds
Focus Watersheds
State Water Planning
Water Quality Assessment



Get Updates
on this
Issue

Our Missouri Waters - From the Clean Water Act



Got questions? Call or email!

Tracy Haag

St. Louis Regional Watershed Coordinator

Missouri Department of Natural Resources

tracy.haag@dnr.mo.gov

(314)416-2452



Urban Waters Federal Partnership New Life for the Meramec and Big Rivers

Urban Waters Ambassador:
Matt Cosby



®







US Army Corps of Engineers
BUILDING STRONG®

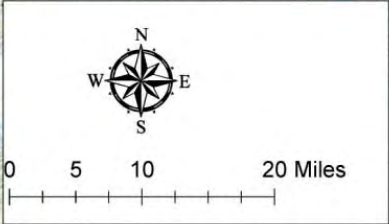
Federal Initiatives in the Meramec

- Urban Waters
- Corps of Engineers – Meramec Project
- Environmental Protection Agency (EPA)
- Natural Resource Damage Assessment Funds
- Forest Service



Meramec Basin

-  Mill Dams
-  USGS_Gages
-  Streams
-  HUC Watersheds
-  Municipalities
-  State Owned Land



DISCLAIMER - While the United States Army Corps of Engineers, (hereinafter referred to USACE) has made a reasonable effort to insure the accuracy of the maps and associated data, it should be explicitly noted that USACE makes no warranty, representation or guaranty, either express or implied, as to the content, sequence, accuracy, timeliness or completeness of any of the data provided herein. The USACE, its officers, agents, employees, or servants shall assume no liability of any nature for any errors, omissions, or inaccuracies in the information provided herein. Furthermore, the USACE, its officers, agents, employees or servants shall assume no liability for any decisions made or actions taken or not taken by the user of the maps and associated data in reliance upon any information or data furnished here. By using these maps and associated data the user does so entirely at their own risk and explicitly acknowledges that he/she is aware of and agrees to be bound by the disclaimer and release of liability contained herein. The USACE, its officers, agents, employees or servants in any forum whatsoever for any damages of any nature whatsoever that may result from or may be caused in any way by the use of the maps and associated data.

Sources: Esri HERE DeLorme TomTom Intermap | Mapbox | OpenStreetMap contributors, GEBCO, USGS, NOAA, NPS/NRCAN, GeoBase, IGN, Kadaster NL, Ordnance Survey, Esri Japan, METI, Esri China (Hong Kong), Swisstopo, MapmyIndia, © OpenStreetMap contributors, and the GIS User Community

Potential Partners



The 27 NGOs who have pledged support are:

- • Alliance for Community Trees
- • American Forests
- • American Planning Association
- • American Rivers
- • American Society of Landscape Architects
- • Amigos de los Rios
- • Arbor Day Foundation
- • Arkansas Urban Forestry Council
- • City Parks Alliance
- • EarthForce
- • Groundwork USA
- • Izaak Walton League
- • National Association of Clean Water Agencies
- • National Recreation and Park Association
- • National Wildlife Federation
- • River Network
- • SavATree
- • Society of Municipal Arborists
- • The Chesapeake Conservancy
- • The Conservation Fund
- • The Intertwine Alliance
- • The Nature Conservancy
- • The Sierra Club
- • The Trust for Public Land
- • Tree Care Industry Association
- • Wilderness Inquiry



Urban Waters Federal Partnership Principals

Urban Waters Ambassador Position

Accelerate and
Coordinate On the
Ground Projects

Increase Water Quality

Increase Public Health

Restore the Ecosystem

Increase Community
Outreach

Reconnecting Individuals
with THEIR Waters



Corps of Engineers Meramec Project

- Corps Meramec Ecosystem Restoration
 - ▶ MDNR
 - ▶ USEPA
- Ecosystem Restoration
 - ▶ Bed and Bank Instabilities
 - ▶ Low Water Crossings
 - ▶ Ecosystem “Lift”



EPA

- Superfund Sites
 - ▶ Jefferson, St. Francois, and Washington Counties
 - Residential Yards
 - In-stream on Big River and Tributaries
- Treatability Studies
 - ▶ Hired Corps to assist with in-stream



NRDA

- Trustees (MDNR, US Fish and Wildlife Service, Forest Service)
 - ▶ Determine Use of Funds
 - ▶ Mitigate damage to natural resources
- Up Coming Meeting
 - ▶ October 13th Meeting in Park Hills
 - ▶ <http://dnr.mo.gov/env/hwp/sfund/nrda.htm>



Success Stories!



BUILDING STRONG®

Kiefer Creek and UW

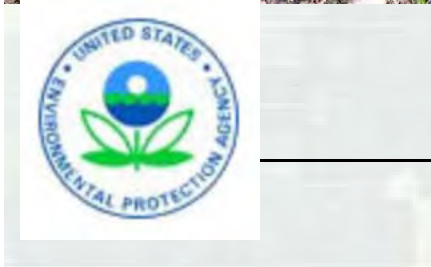
- Helping to develop a partnership that is creating a Nine Element Watershed Plan
- Working with The Nature Conservancy to analyze and prioritize projects/measure

within the watershed to improve water quality



BUILDING STRONG®





BUILDING STRONG®

Contact Information

Matt Cosby

Project Manager and Urban Waters Ambassador

(314) 331-8129

Matthew.G.Cosby@usace.army.mil

