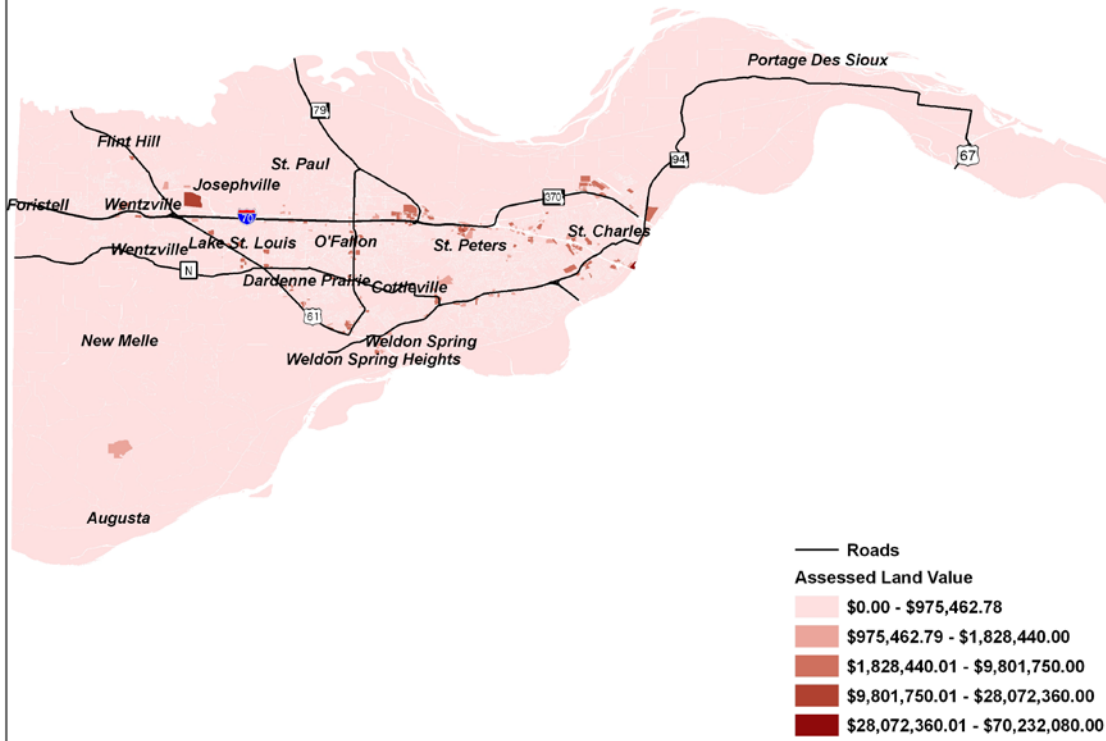
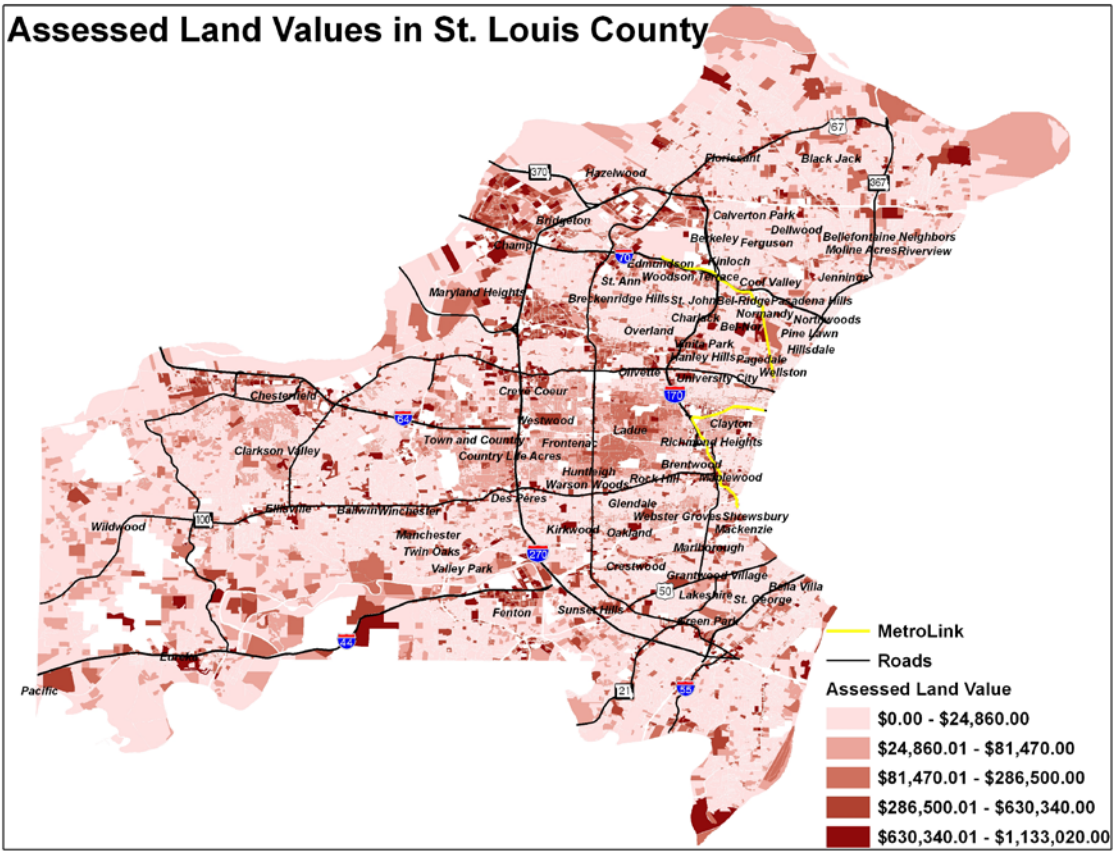


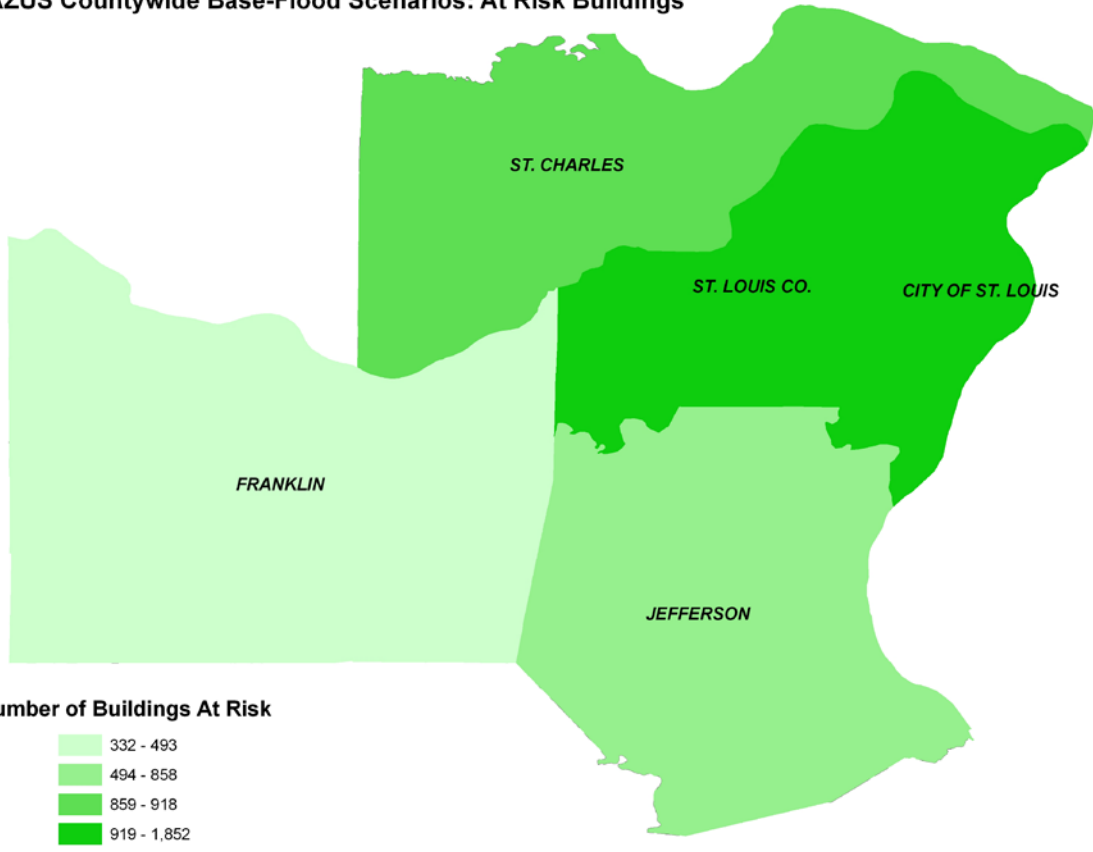
# Assessed Land Values in St. Charles County



# Assessed Land Values in St. Louis County

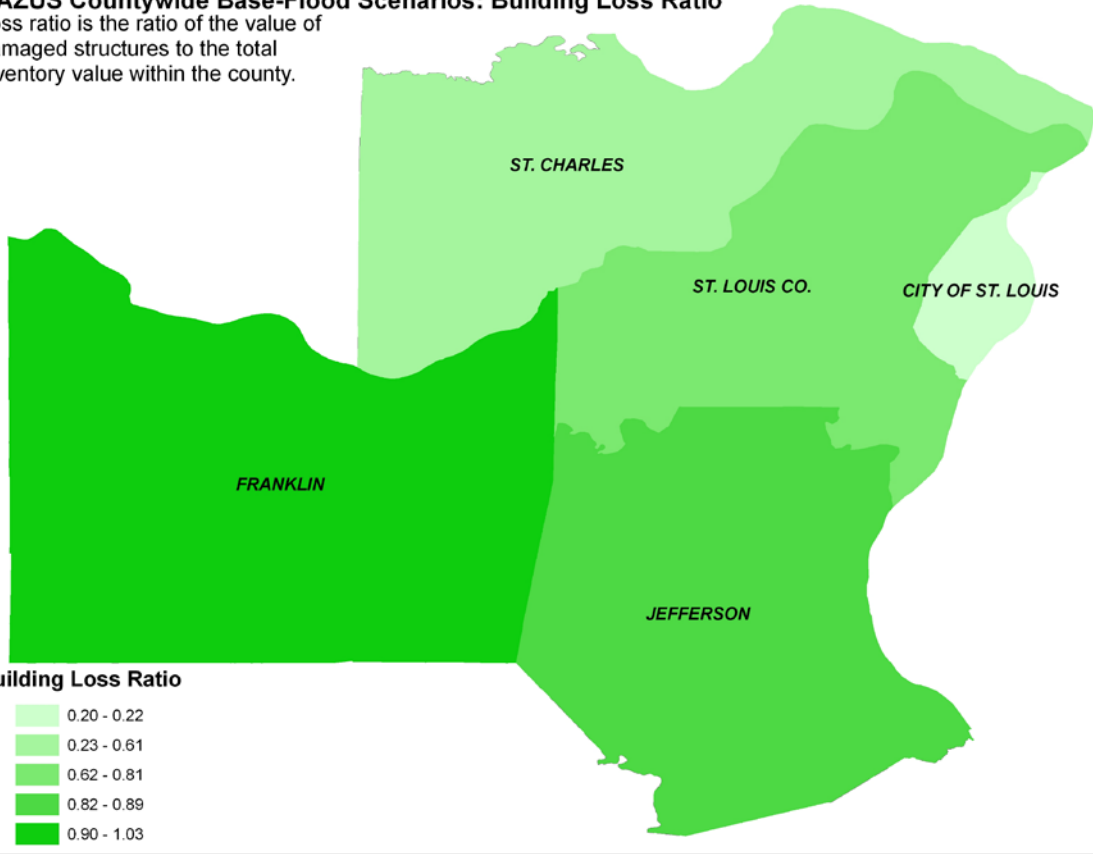


**HAZUS Countywide Base-Flood Scenarios: At Risk Buildings**



### HAZUS Countywide Base-Flood Scenarios: Building Loss Ratio

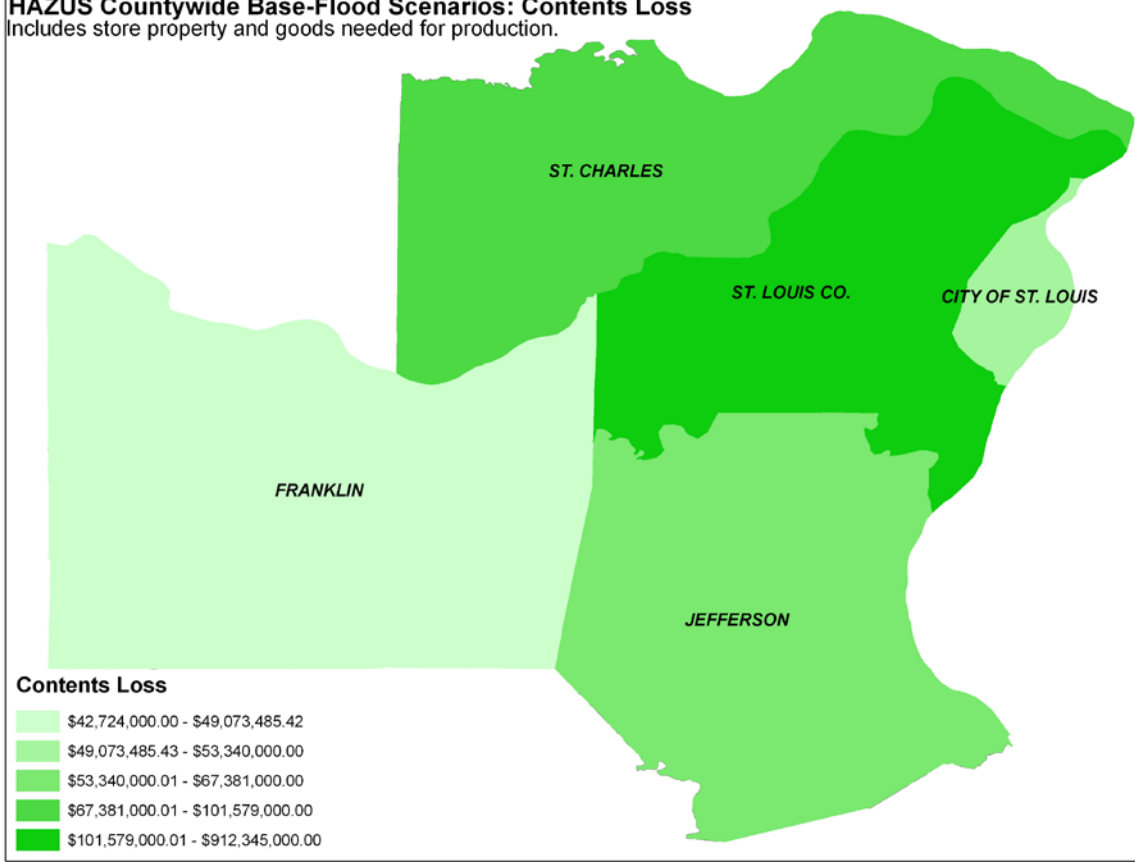
Loss ratio is the ratio of the value of damaged structures to the total inventory value within the county.



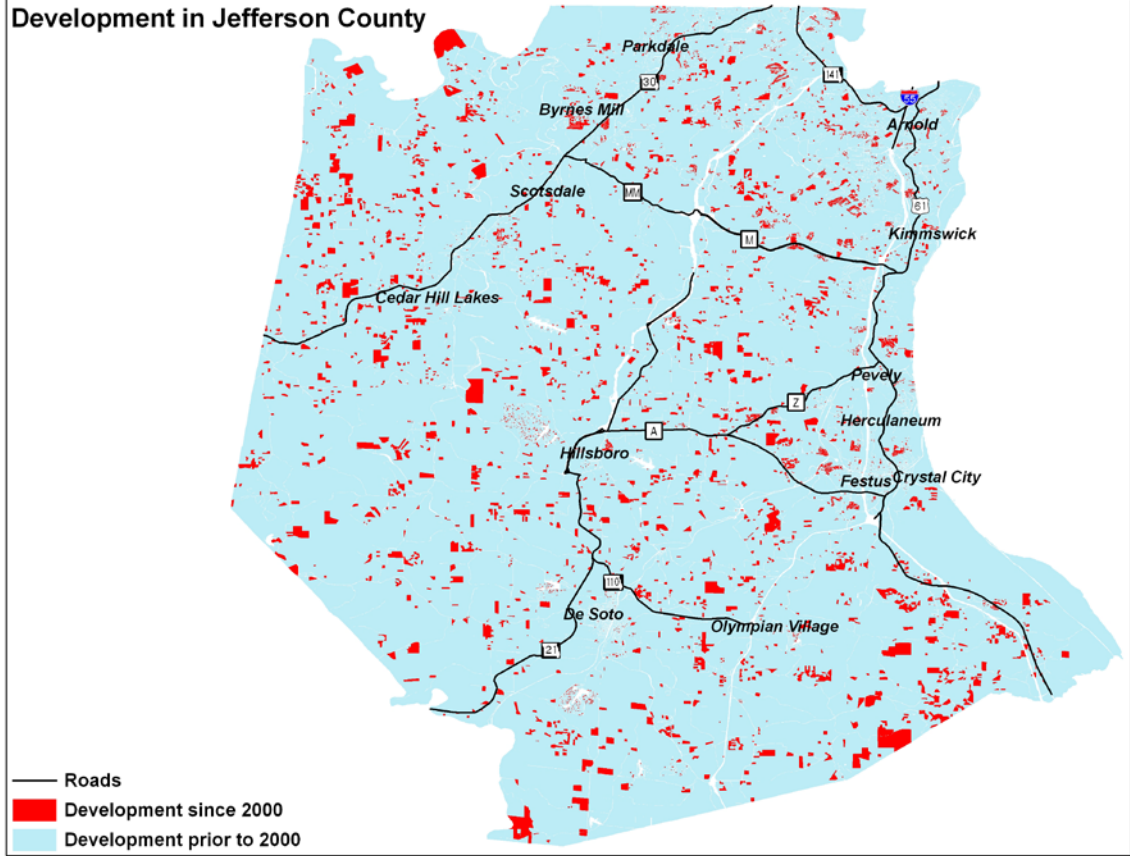
#### Building Loss Ratio

- 0.20 - 0.22
- 0.23 - 0.61
- 0.62 - 0.81
- 0.82 - 0.89
- 0.90 - 1.03

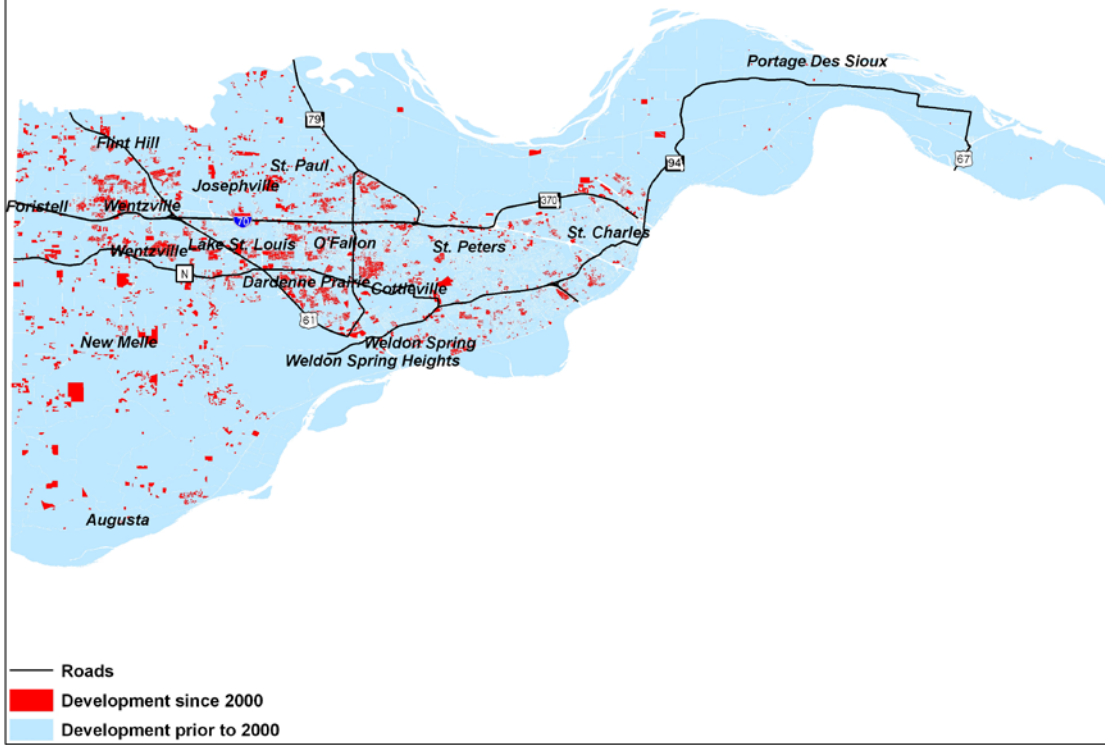
**HAZUS Countywide Base-Flood Scenarios: Contents Loss**  
Includes store property and goods needed for production.



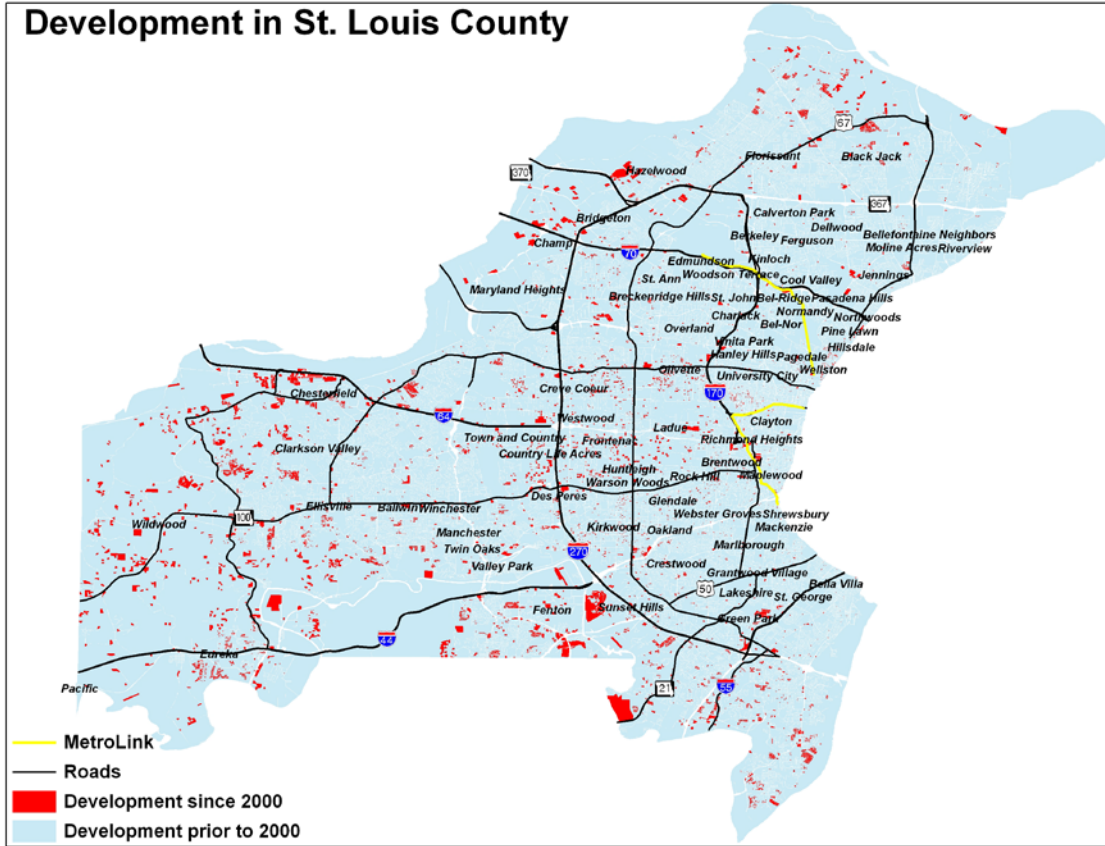
# Development in Jefferson County



# Development in St. Charles County

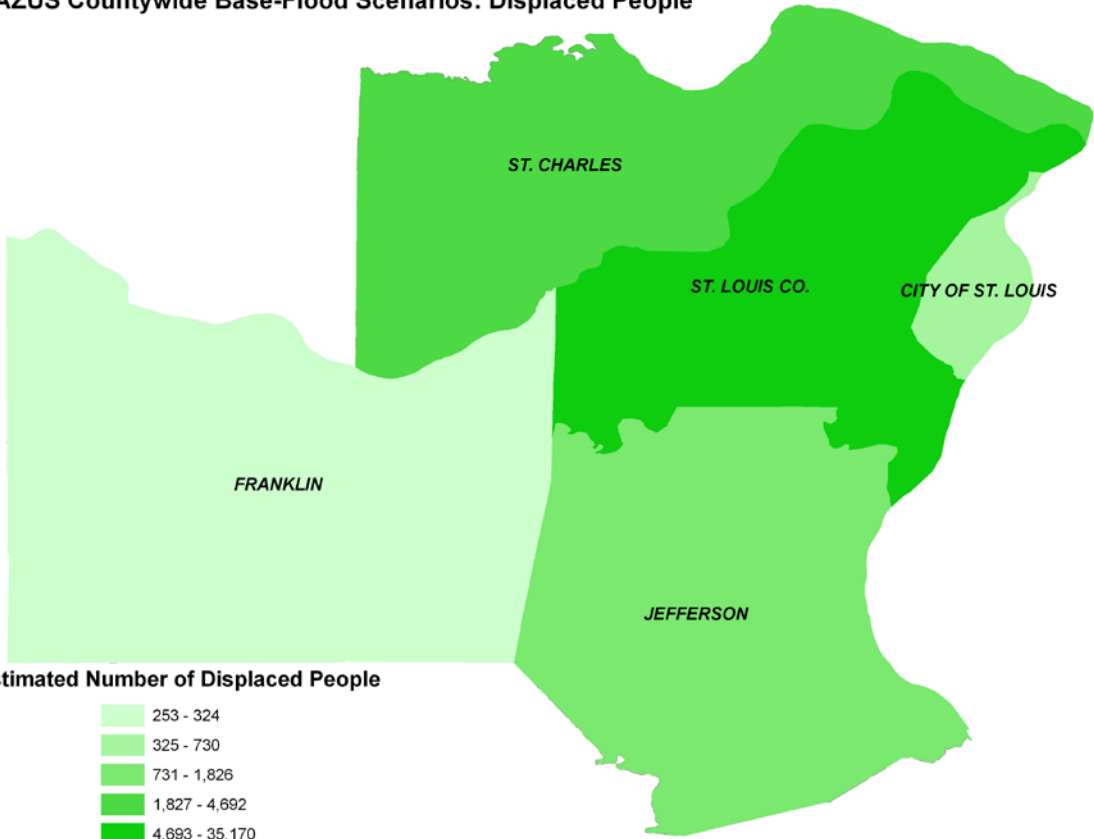


# Development in St. Louis County

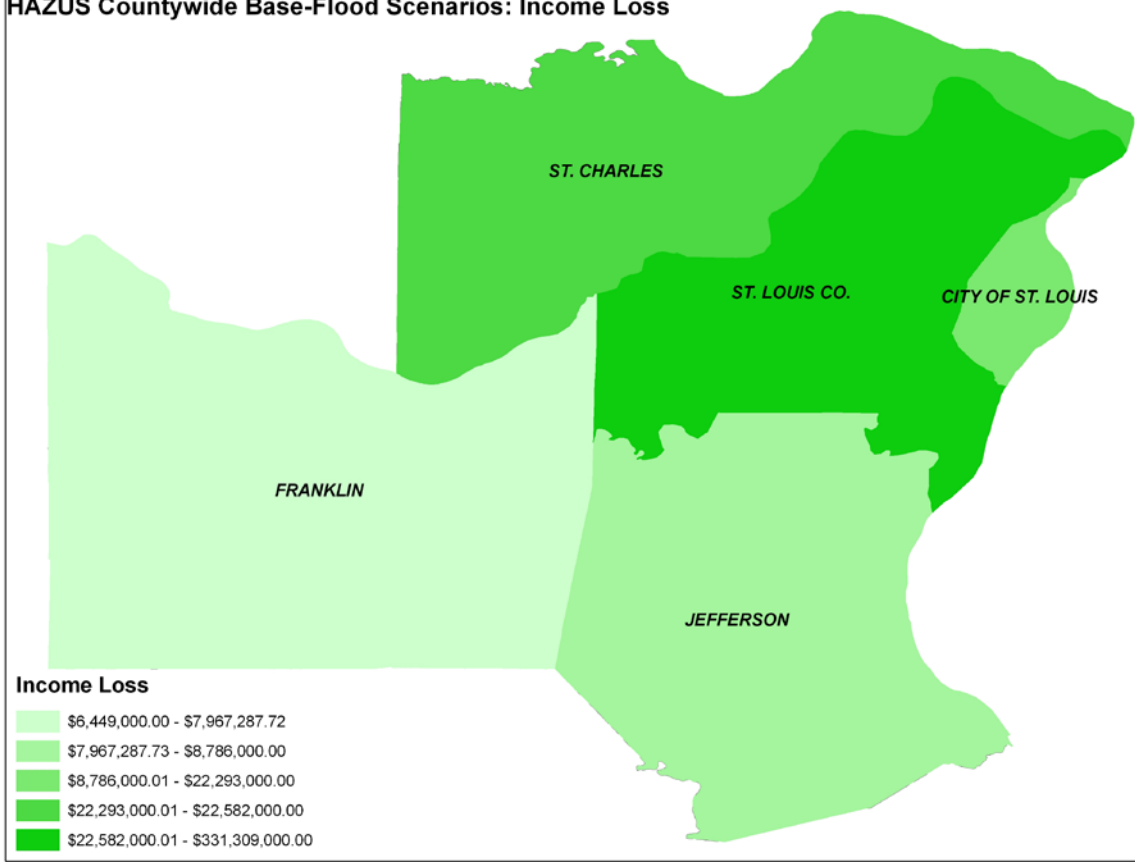




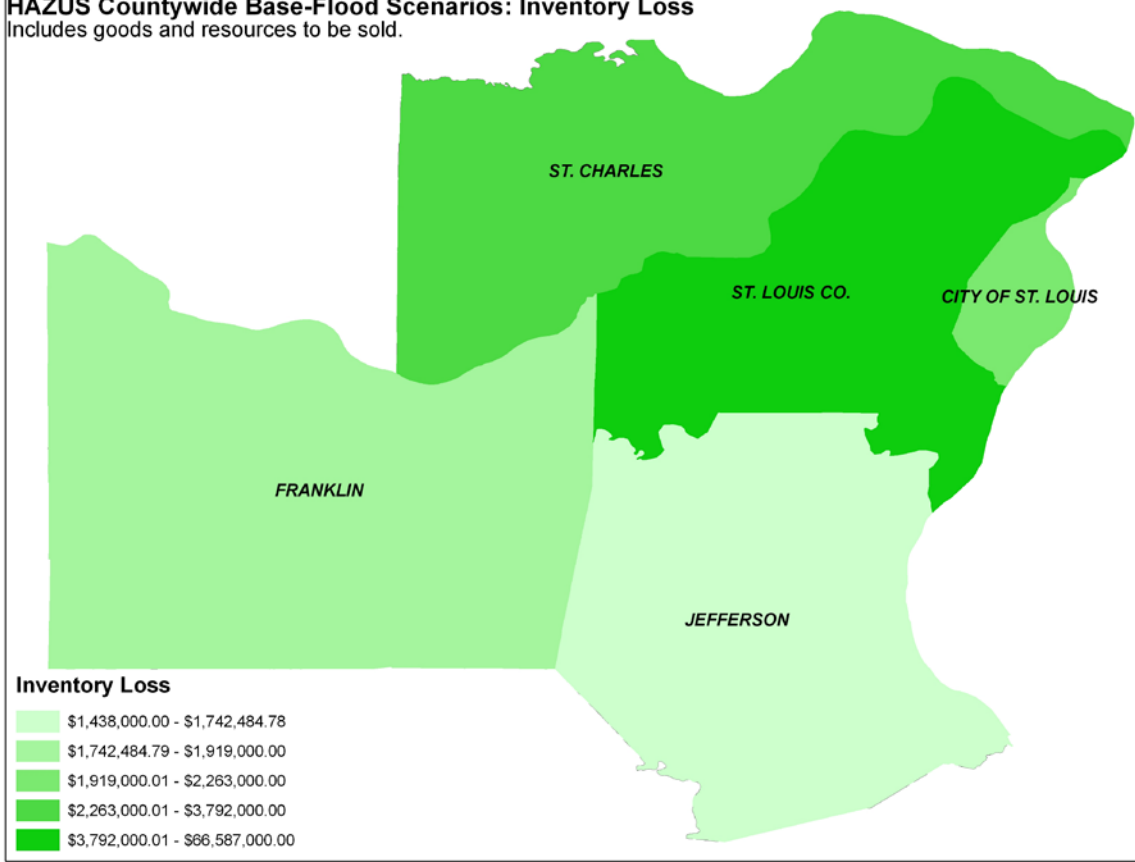
**HAZUS Countywide Base-Flood Scenarios: Displaced People**



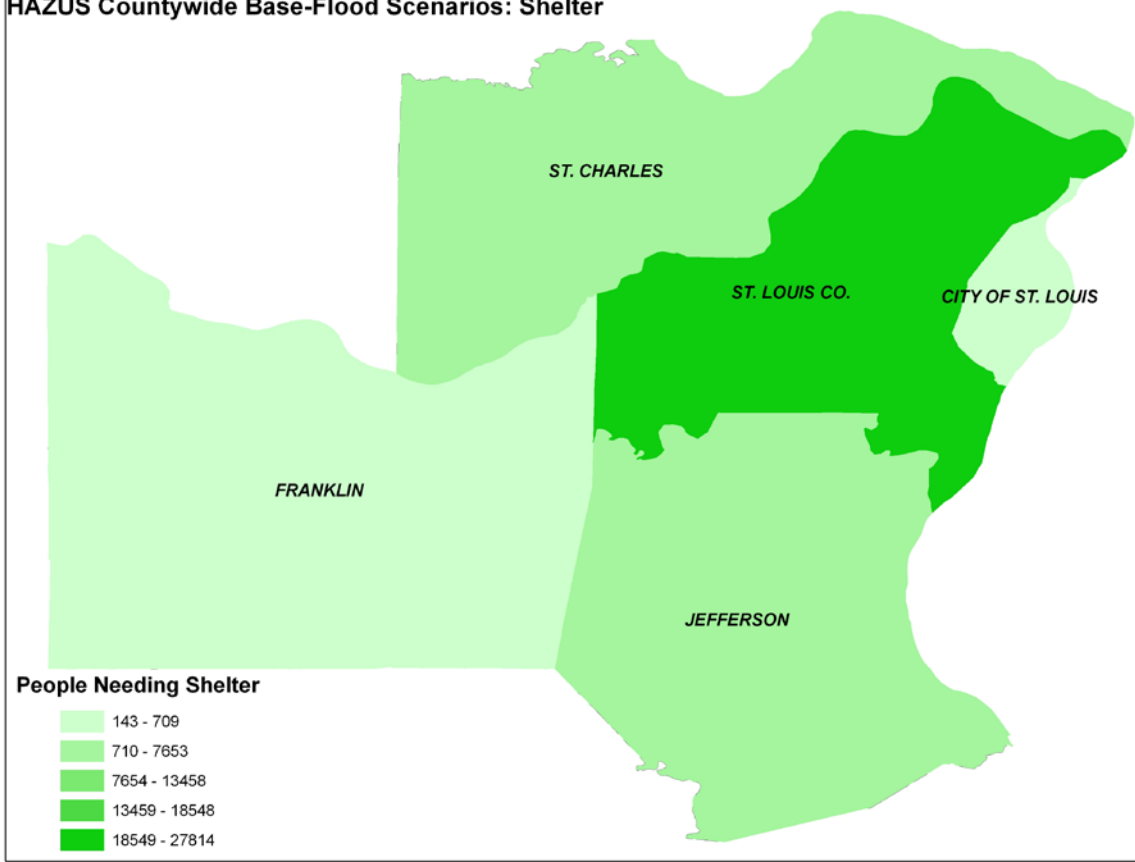
**HAZUS Countywide Base-Flood Scenarios: Income Loss**



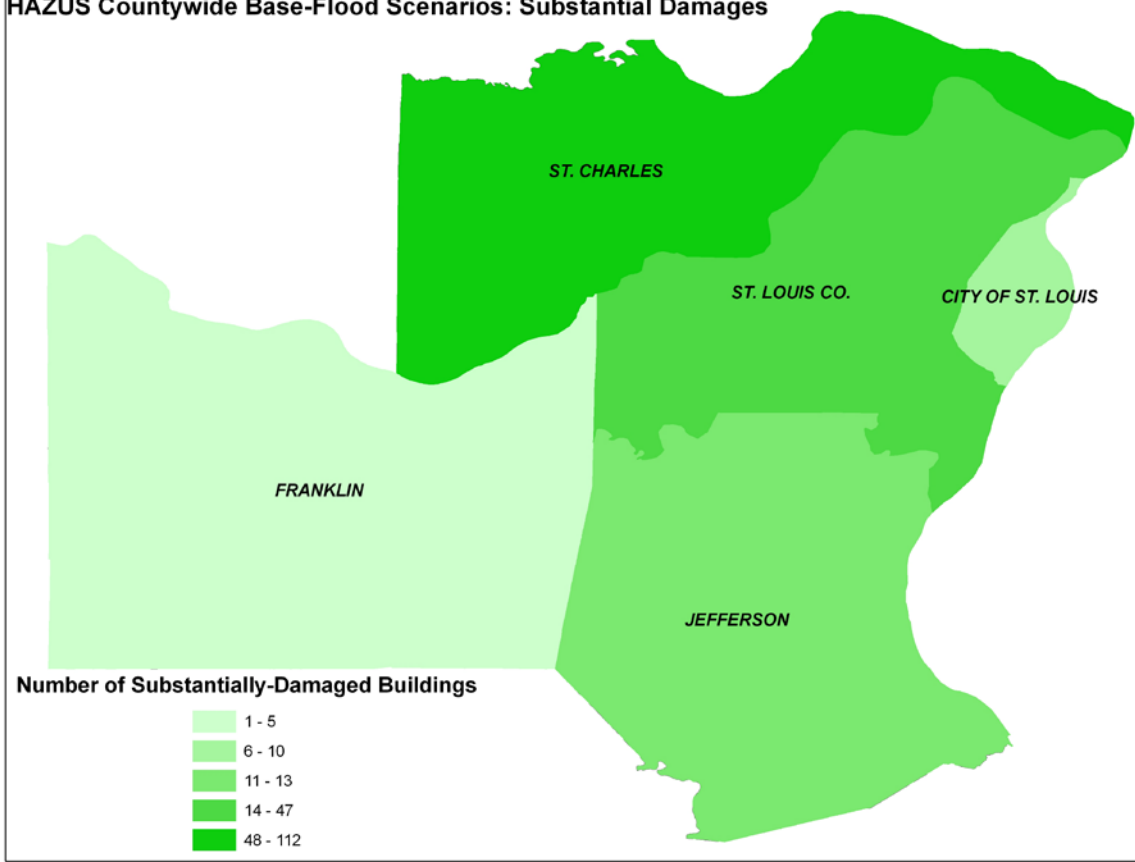
**HAZUS Countywide Base-Flood Scenarios: Inventory Loss**  
Includes goods and resources to be sold.



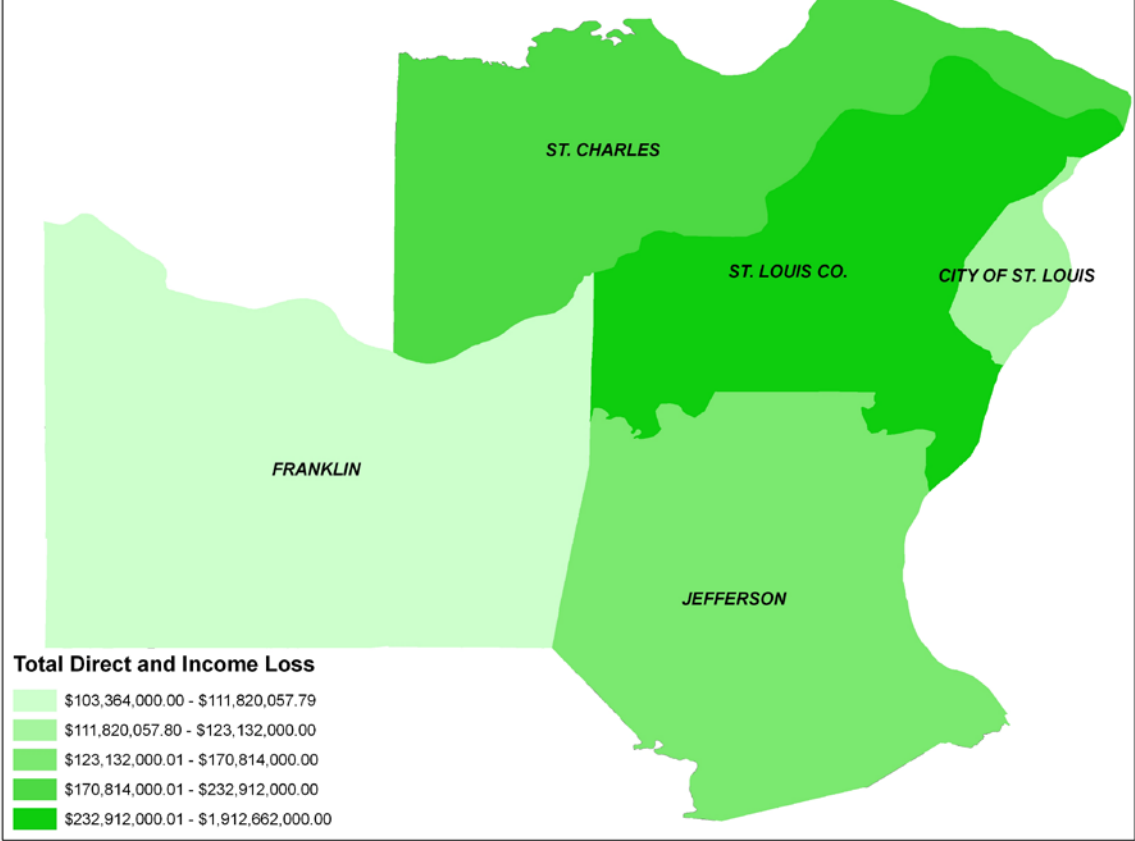
**HAZUS Countywide Base-Flood Scenarios: Shelter**



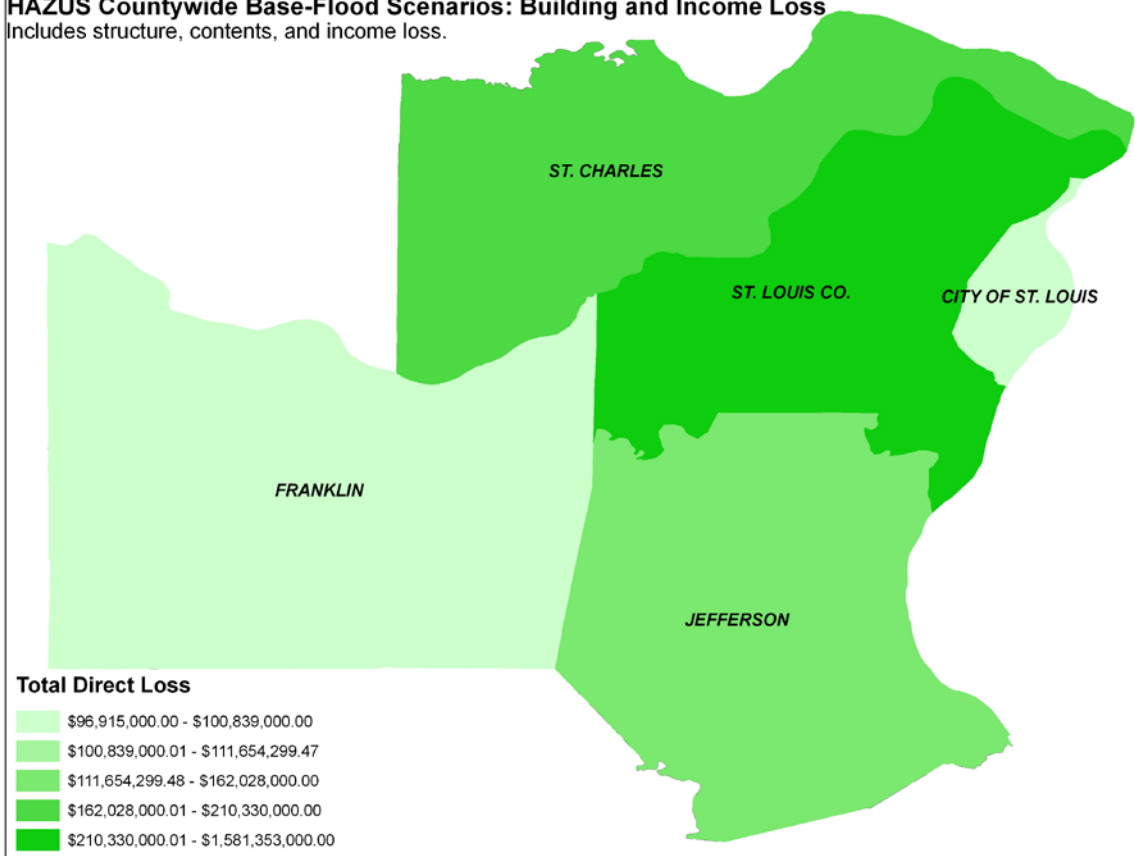
**HAZUS Countywide Base-Flood Scenarios: Substantial Damages**



**HAZUS Countywide Base-Flood Scenarios: Total Direct and Income Loss**



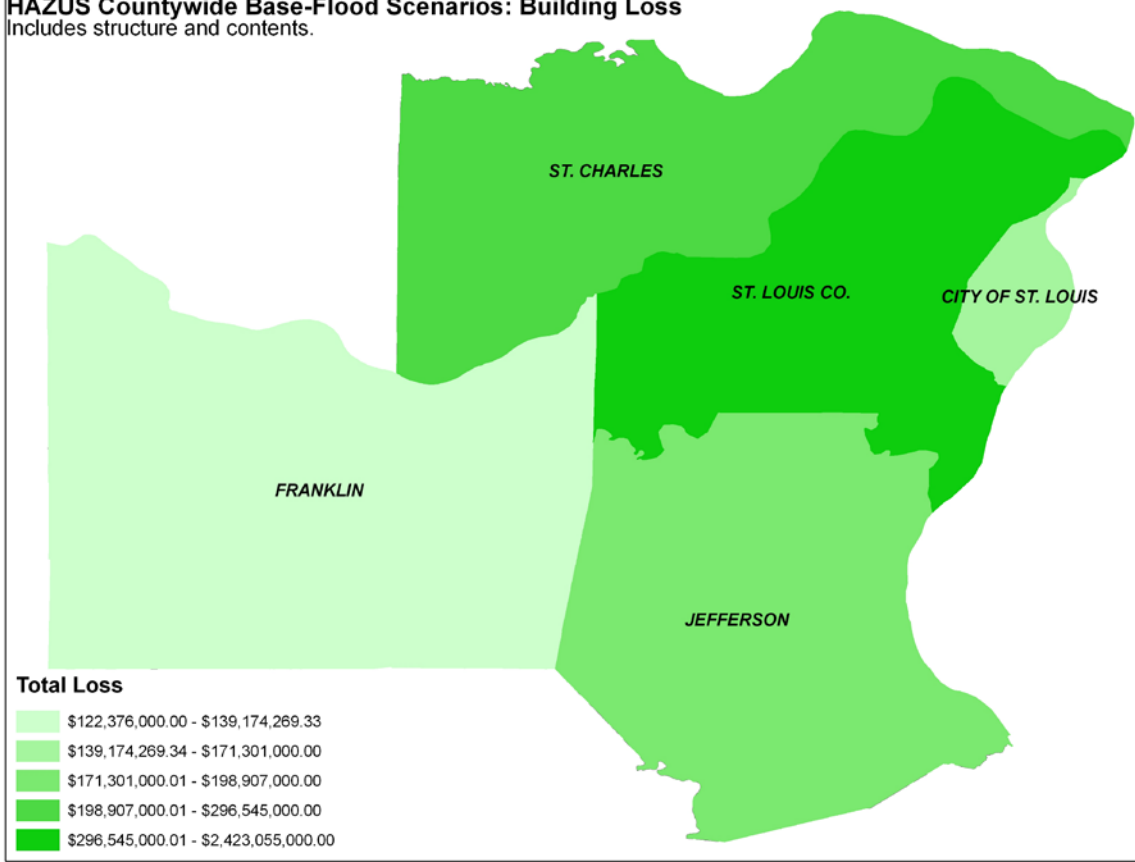
**HAZUS Countywide Base-Flood Scenarios: Building and Income Loss**  
Includes structure, contents, and income loss.



**Total Direct Loss**

- \$96,915,000.00 - \$100,839,000.00
- \$100,839,000.01 - \$111,654,299.47
- \$111,654,299.48 - \$162,028,000.00
- \$162,028,000.01 - \$210,330,000.00
- \$210,330,000.01 - \$1,581,353,000.00

**HAZUS Countywide Base-Flood Scenarios: Building Loss**  
Includes structure and contents.



**Total Loss**

- \$122,376,000.00 - \$139,174,269.33
- \$139,174,269.34 - \$171,301,000.00
- \$171,301,000.01 - \$198,907,000.00
- \$198,907,000.01 - \$296,545,000.00
- \$296,545,000.01 - \$2,423,055,000.00