

AGENDA
EAST-WEST GATEWAY COUNCIL OF GOVERNMENTS
EXECUTIVE ADVISORY COMMITTEE MEETING
TUESDAY, JANUARY 20, 2015 –2:00 PM

1. CALL TO ORDER

2. APPROVAL OF MINUTES OF OCTOBER 21, 2014

3. DISCUSSION ITEMS

- A. OneSTL Report to the Region and Where We Stand Update: Sustainability
- B. MoDOT Direction

4. ACTION ITEMS

- A. Authorization to amend the Subcontract with South Grand Community Improvement District for the South Grand Rain Garden Project
- B. Mid-Year Air Quality Conformity Determination and Documentation for the FY 2015-2018 Transportation Improvement Program and related amendments to the Metropolitan Transportation Plan - *RTP 2040*
- C. Modification of the Metropolitan Transportation Plan – *RTP 2040* to add one project – City of Wentzville
- D. Modification of the FY 2015-2018 Transportation Improvement Program (TIP), the Metropolitan Transportation Plan – *RTP 2040*, and the related Air Quality Conformity Determination to add 24 projects – Section 5310 Program (Illinois)
- E. Modification of the FY 2015-2018 Transportation Improvement Program (TIP), the Metropolitan Transportation Plan – *RTP 2040*, and the related Air Quality Conformity Determination to add 23 projects – Transportation Alternatives Program (Missouri)
- F. Regional Security Expenditures

5. OTHER BUSINESS

6. ADJOURNMENT



EAST-WEST GATEWAY Council of Governments

Creating Solutions Across Jurisdictional Boundaries

Chair

Francis G. Slay
Mayor, City of St. Louis

Vice Chair

Mark A. Kern
Chairman, St. Clair County Board

2nd Vice Chair

Charlie A. Dooley
County Executive
St. Louis County

Executive Committee

Alan Dunstan
Chairman, Madison County Board

Steve Ehlmann
County Executive
St. Charles County

John Griesheimer
Presiding Commissioner
Franklin County

Ken Waller
County Executive
Jefferson County

Delbert Wittenauer
Chairman, Board of Commissioners
Monroe County

Members

Mark Eckert
Vice President,
Southwestern Illinois
Council of Mayors

John Hamm III
President, Southwestern Illinois
Metropolitan & Regional
Planning Commission

Ted Hoskins
St. Louis County

Mike Livengood
Franklin County

John Miller
President, Southwestern Illinois
Council of Mayors

Jack Minner
Madison County

Roy Mosley
St. Clair County

Alvin L. Parks, Jr.
Mayor, City of East St. Louis

Lewis Reed
President, Board of Aldermen
City of St. Louis

Thomas P. Schneider
St. Louis County Municipal League

John White
St. Charles County

Regional Citizens

Richard Kellett
John A. Laker

Barbara Geisman
James A. Pulley

Dave Stoecklin

Non-voting Members

Charles Ingersoll
Illinois Department of
Transportation

Eddie Koch
Illinois Department of Commerce
and Economic Opportunity

John Nations
Metro

Brian May
Missouri Office of Administration

Dave Nichols
Missouri Department of
Transportation

Executive Director

Ed Hillhouse

Assistant Executive Director

James M. Wild

Memo to: Board of Directors

From: Staff

Subject: Project Notifications

Date: January 9, 2015

Attached is the Project Notification list for January 2015. The compiled list is a result of the weekly list of projects from the Missouri State Clearinghouse for comments. The listing contains a summary table which includes grant applications, announcements, and public notices. If you have any questions regarding this attachment, please contact Gary Pondrom in the Community Planning department.

Gateway Tower
One Memorial Drive, Suite 1600
St. Louis, MO 63102-2451

314-421-4220
618-274-2750
Fax 314-231-6120

webmaster@ewgateway.org
www.ewgateway.org

**Project Reviews for East-West Gateway Council of Governments
January 2015**

JURISDICTION	APPLICANT	PROJECT DESCRIPTION	FEDERAL AGENCY	FEDERAL GRANT/LOAN	FUNDING: STATE LOCAL/OTHER	TOTAL
City of St. Louis	Grace Hill Settlement House #1503005	Head Start - To provide funding for Full-Day Head Start	HHS	\$11,874,462	Applicant: \$2,968,616	\$14,843,078
St. Louis County & City of St. Louis	St. Louis Economic Development Partnership #1505007	Science and Research Park Development Grants - To provide funding for the Global Plant Science Quad Master Plan	DOC	\$500,000		\$500,000
St. Louis County	BioSTL #1505008	Cluster Grants - To provide funding for advancing regional prosperity in St. Louis by accelerating the transition of bioscience innovation, especially from the regions research institutions, from ideas into the market	DOC	\$498,913	Applicant: \$498,913	\$997,828
City of St. Louis	St. Louis Effort for AIDS, Inc. #1505017	HIV Prevention Activities_Non-Governmental Organization Based - To provide funding for Prevention and Integrated Linkage to Optimized Treatment	HHS	\$948,218	State: \$39,990 Other: \$12,210	\$1,000,418
Jefferson County	Community Treatment, Inc. #1505018	Consolidated Health Centers (Community Health Centers, Migrant Health Centers, Health Care for the Homeless, and Public Housing Primary Care) - To provide funding for Service Area Competition	HHS	\$1,054,029	Local: \$100,000 Income: \$4,866,636	\$6,020,665
City of St. Louis	The Community Wellness Project #1505019	HIV Prevention Activities_Non-Governmental Organization Based - To provide funding for Condoms and Sexual Education Project (C.A.S.E.)	HHS	\$400,000		\$400,000
City of St. Louis	Urban League of Metropolitan St. Louis #1505029	Head Start - To provide funding for the Urban League of Metropolitan St. Louis, Inc. Head Start and Early Head Start Program	HHS	\$2,667,182	Applicant: \$666,796 Other: \$849,618	\$4,183,596
Multi-County	Youth in Need #1506002	Head Start - To provide funding for Youth in Need's Head Start and Early Head Start Programs in the City of St. Louis and St. Louis, St. Charles, Warren, Lincoln and Montgomery counties	HHS	\$12,293,626	Applicant: \$3,073,407 Other: \$324,000	\$15,691,033
City of St. Louis	City of St Louis Mental Health Board of Trustees #1506007	Assistance for Torture Victims - To provide funding for The Partnership Paradigm for St. Louis Survivors of Torture ("St. Louis Partnership")	HHS	\$387,584		\$387,584
St. Louis County & City of St. Louis	Washington University #1506010	National Historical Publications and Record Grants - To provide funding for Eyes on the Prize Interview Digitization and Reassembly Project	NARA	\$150,000	Applicant: \$185,964	\$335,964

St. Louis County & City of St. Louis	Young Women's Christian Association of Metropolitan St. Louis #1507001	Head Start - To provide funding for Head Start and Early Head Start Services	HHS	\$22,362,761	Applicant: \$5,590,690	\$27,953,451
Jefferson County	Jefferson College District of Jefferson County #1507014	TRIO Student Support Services - Student Support Services - A SSS Program to assist 160 first- generation, low-income or students with disabilities graduate from a 2-year community college and transfer to a 4-year university	ED	\$257,086		\$257,086

MINUTES

EAST-WEST GATEWAY COUNCIL OF GOVERNMENTS EXECUTIVE ADVISORY COMMITTEE OCTOBER 21, 2014

Members Present

Eddie Roth, *Chair*, City of St. Louis
Jim Fields, *Vice-Chair*, St. Clair County
Tracy Beidleman, Metro
Tiffany Brase, IDOT, Region 8
Tom Curran, St. Louis County
Gary Elmestad, St. Charles County
Dave Hutchings, Jefferson County
Curtis Jones, IDOT, Office of Urban Program & Planning
Pauline Masson, Franklin County
Ralph McDaniel, St. Louis County
Judy Nelson, SW IL Council of Mayors
Joe Parente, Madison County, IL
Michael Powers, Office of the President of the Board of Aldermen
Bill Schnell, MoDOT
Stephanie Streeter, St. Louis County
Betsy Tracy, FHWA, IL Div.

Others in Attendance

Kevin Jemison, IDOT
Mike Henderson, MoDOT

EWGCOG Staff:

Ed Hillhouse, Jim Wild, Staci Alvaraz, Royce Bauer, Jerry Blair, Mike Coulson, Nick Gragnani, Larry Grither, Medora Kealy, Peter Koeppel, Karen Kunkel, Jason Lange, Sang Gu Lee, MaryGrace Lewandowski, Alexis McGrail, Christopher Michael, Anna Musial, Rachael Pawlak, Gary Pondrom, Jenny Reiman, Mary Rocchio, John Posey, Sonya Pointer, Shay Schindler, Lubna Shoaib, Julie Stone, Himmer Soberanis, DJ Wilson, Aaron Young

CALL TO ORDER

The Executive Advisory Committee was called to order by Chair Eddie Roth.

INTRODUCTIONS

Mr. Roth introduced new member Ralph McDaniel, representing St. Louis County.

APPROVAL OF MINUTES OF SEPTEMBER 16, 2014 MEETING

Motion was made by Mr. Elmestad, seconded by Mr. Curran, to approve the minutes of the September 16, 2014 meeting. A request was made to correctly note that Vice Chair Jim Fields is

with St. Clair County, not St. Louis City as referenced. Subject to the correction, motion carried, all voting aye with the exception of Mr. Roth, who abstained.

DISCUSSION ITEMS

Status of I-270 Environmental Study

Lisa Kuntz, MoDOT, provided an overview of the I-270 North Corridor study, during which she summarized the history leading up to the environmental study that encompasses a 15-mile stretch of roadway extending between I-70 in St. Louis County and Highway H in the City of St. Louis, also including 19 interchanges. She identified problems related to the corridor's aging infrastructure, and summarized some of the remedial alternatives vital to improving mobility and operations, accessibility and safety. She noted that necessary work prior to construction includes completion of engineering work, a FHWA approved environmental study expected sometime in January of 2015, a final public hearing in February 2015, and a finding of no significant impacts in March 2015.

Additional discussion followed regarding the status of the I-70 corridor study and funding shortfalls that have halted planning work on it; and the viability of staff presenting a broader presentation outlining the importance of continuing that study at a future Executive Advisory Committee and Board of Director meetings. Mr. Curran advised that St. Louis County endorses both studies.

Pathway to Public Office

Julie Stone, EWGCOG, reported that, in response to the Board of Directors directive, staff has organized and will be offering a free, one-day workshop on Saturday, December 6, 2014, at the University of Missouri – St. Louis (UMSL) to provide educational information about election processes to potential candidates interested in vying for non-partisan offices (municipal, school district and fire boards) in Missouri. She noted that the success of this workshop will determine the viability of a similar workshop for potential Illinois candidates at a later date, and she advised that staff would continue to encourage long-term discussions toward creating a set of activities and resources beyond the initial workshop.

Additional discussion followed regarding the selection and notification process for promoting information regarding the event.

Update on the Development of *Connected 2045*

Peter Koeppel, EWGCOG, summarized the work being conducted by staff to update the region's 30 year transportation plan and the timeline for development, including ongoing solicitation and evaluation of projects, refining evaluation framework for project consideration, and holding technical stakeholder workshops, including a four part speaker series, as part of the public engagement process, which is vital to completion of the plan.

Additional discussion followed regarding changes to how future project solicitations are performed toward identifying priority and illustrative projects for inclusion in the long and short range plans.

ACTION ITEMS**Modification of the FY 2015-2018 Transportation Improvement Programs, the Metropolitan Transportation Plan – RTP 2040, and the related Air Quality Conformity Determination (TIP) – Requested by the Illinois Department of Transportation**

Jason Lange, EWGCOG, summarized staff's recommendation to amend the FY 2015-2018 TIP, RTP 2040 and related Air Quality Conformity Determination to modify the following project:

TIP #	Sponsor	Description
5504-15	IDOT	Madison County – Resurfacing, bridge repairs and sealing, I-70 – 2.5 miles east of I-55/270 to 0.1 miles east of Prairie Road

Motion approving the recommendation was made by Ms. Nelson, seconded by Mr. Parente.
Motion carried, all voting aye.

Modification of the FY 2015-2018 Transportation Improvement Programs, the Metropolitan Transportation Plan – RTP 2040, and the related Air Quality Conformity Determination (TIP) – Requested by Missouri Department of Transportation

Mr. Lange, EWGCOG, summarized staff's recommendations to amend the FY 2015-2018 TIP, RTP 2040 and related Air Quality Conformity Determination to add the following new projects:

TIP #	Sponsor	Description
6530-15	MoDOT	St. Charles County – Pavement improvements, I-64 - .5 miles east of Lake St. Louis Blvd.; 1 Mile east of MO DD to .5 miles west of MO K
6454-14	MoDOT	Jefferson County – Bridge painting – MO 21 – at Old 21 / Shady Valley, W Four Ridge Road, Old 21 / Shenk Road
5203A-15	St. Charles County	St. Charles County – Remove bridge – Old Highway Z over tributary of Peruque Creek
5203B-15	St. Charles County	St. Charles County – Replace bridge – Schnarre Road - over tributary of Sams Creek
5203C-16	St. Charles County	St. Charles County – Replace bridge – Nahm Road – over tributary of Sehrt Creek
5203D-15	St. Charles County	St. Charles County – Replace bridge – South Shore Drive – over tributary of Mississippi River

Motion approving the recommendations was made by Mr. Elmestad, seconded by Mr. Curran.
Motion carried, all voting aye.

Amendment to the 2015 Unified Planning Work Program: addition of element 1.03 Greenhouse Gas Inventory and revision of element 2.36 Missouri Regional 208 Water Quality Management Plan Initiative

Jim Wild, EWGCOG, summarized staff's recommendation to amend the UPWP to add the work element 1.03 Greenhouse Gas Inventory and to revise work element 2.36 Missouri Regional 208 Water Quality Management Plan Initiative; and that staff be authorized to enter into contract with FHWA/MoDOT, SLUE and MoDNR to conduct the associated work.

Motion approving the recommendations was made by Ms. Nelson, seconded by Mr. Hutchings.
Motion carried, all voting aye.

Functional Classification Update

Lubna Shoaib EWGCOG, summarized staff's recommendation to adopt 12 functional classification changes as referenced in corresponding memo and maps. She noted that one application did not meet the required criteria and, accordingly, has not been recommended.

Motion approving the recommendations was made by Mr. Hutchings, seconded by Mr. Nelson.
Motion carried, all voting aye.

Update of the St. Louis Regional Intelligent Transportation System (ITS) Architecture

Larry Grither, EWGCOG, summarized staff's recommendation to negotiate and contract with Iteris or, alternatively URS, to conduct the update of the St. Louis Regional ITS Architecture, for an amount not to exceed \$185,000.

Motion approving the recommendation was made by Mr. Curran, seconded by Mr. Schnell.
Motion carried, all voting aye.

Revision to East-West Gateway Council of Governments Retirement Savings Plan

Ed Hillhouse, EWGCOG, summarized staff's recommendation to increase the 401(k) discretionary match provided by East-West Gateway Council, from 4.25 percent to 6 percent effective January 1, 2015.

Motion approving the recommendations was made by Mr. Parente, seconded by Mr. Hutchings.
Motion carried, all voting aye.

Calendar Year 2015 East-West Gateway Budget

Mr. Hillhouse, EWGCOG, summarized staff's recommendation to adopt the proposed CY2015 budget as proposed, recommend it for adoption at the Annual Meeting on November 14, 2014; and to adjust the Position Classification Schedule to reflect a 2% cost of living increase.

Motion approving the recommendations was made by Mr. Curran, seconded by Ms. Nelson.
Motion carried, all voting aye.

2015 Aerial Photography Project

Jenny Reiman, EWGCOG, summarized staff's recommendation to enter into agreements with: (1) Surdex Corporation to provide aerial imagery for the region, including Lincoln County and the 4th band data, at a cost not to exceed \$581,950; (2) GRW, Inc. to provide quality assurance and control at a cost not to exceed \$64,850; and (3) Lincoln County to provide local funds, not to exceed \$79,982.

Motion approving the recommendations was made by Mr. Longley, seconded by Mr. Schnell. Motion carried, all voting aye.

OTHER BUSINESS

Mr. Elmestad encouraged support of the Governor's recommendation to appoint Brian T. Scott as one of two appointees to the Missouri Highway Commission.

He also encouraged ongoing dialogue with presiding elected officials to support reauthorization of the Surface Transportation Act.

Mr. Hillhouse and Mr. Roth commended and thanked staff for their knowledge and expertise in preparing the region's transportation plans.

ADJOURNMENT

Motion to adjourn the meeting was made by Mr. Parente, seconded by Mr. Schnell. Motion carried, all voting aye.

Respectfully submitted,

A handwritten signature in black ink, appearing to read "Ed Hillhouse". The signature is fluid and cursive, with the first letter "E" being large and prominent.

Ed Hillhouse
Secretary, Board of Directors



EAST-WEST GATEWAY Council of Governments

Creating Solutions Across Jurisdictional Boundaries

Chair

Francis G. Slay
Mayor, City of St. Louis

Vice Chair

Mark A. Kern
Chairman, St. Clair County Board

2nd Vice Chair

Charlie A. Dooley
County Executive
St. Louis County

Executive Committee

Alan Dunstan
Chairman, Madison County Board

Steve Ehlmann
County Executive
St. Charles County

John Griesheimer
Presiding Commissioner
Franklin County

Ken Waller
County Executive
Jefferson County

Delbert Wittenauer
Chairman, Board of Commissioners
Monroe County

Members

Mark Eckert
Vice President,
Southwestern Illinois
Council of Mayors

John Hamm III
President, Southwestern Illinois
Metropolitan & Regional
Planning Commission

Ted Hoskins
St. Louis County

Mike Livengood
Franklin County

John Miller
President, Southwestern Illinois
Council of Mayors

Jack Minner
Madison County

Roy Mosley
St. Clair County

Alvin L. Parks, Jr.
Mayor, City of East St. Louis

Lewis Reed
President, Board of Aldermen
City of St. Louis

Thomas P. Schneider
St. Louis County Municipal League

John White
St. Charles County

Regional Citizens

Richard Kellett
John A. Laker

Barbara Geisman
James A. Pulley
Dave Stoecklin

Non-voting Members

Charles Ingersoll
Illinois Department of
Transportation

Eddie Koch
Illinois Department of Commerce
and Economic Opportunity

John Nations
Metro

Brian May
Missouri Office of Administration

Dave Nichols
Missouri Department of
Transportation

Executive Director

Ed Hillhouse

Assistant Executive Director

James M. Wild

Memo to: Board of Directors

From: Staff

Date: January 14, 2015

Subject: OneSTL Report to the Region and Where We Stand Update: Sustainability

In December 2013 the Board of Directors approved OneSTL, the regional plan for sustainable development. OneSTL provides a vision, goals and strategies on a broad set of issues important to the people of St. Louis. One year later, East-West Gateway, along with partner organizations, is releasing the *OneSTL Report to the Region*. The report provides an update on OneSTL based on the performance indicators that measure the region's progress and by highlighting some of the initiatives that are helping the region attain its goals.

The OneSTL Report to the Region finds that the St. Louis region is improving on over half of the indicators tracked as part of OneSTL. One area the region is improving is "Prosperous", which measures the region's progress on indicators of the strength of the economy. The region has seen recent improvements in employment, the unemployment rate and GMP.

A complementary report was completed by East-West Gateway research staff – *Where We Stand Update* on Sustainability. The Update builds on information included in the sixth edition of *Where We Stand*, providing comparative metrics that show the performance of the St. Louis region. The rankings give objective, verifiable, reliable data that can be used to better understand the St. Louis region's advantages and challenges.

The *Where We Stand Update* finds that the St. Louis region continues to perform well in areas such as housing affordability and volunteerism but does not perform as well as many of its peers in areas such as air quality and transit ridership.

Staff will present some of the key findings from the *OneSTL Report to the Region* and the *Where We Stand Update* on Sustainability.

Gateway Tower
One Memorial Drive, Suite 1600
St. Louis, MO 63102-2451

314-421-4220
618-274-2750
Fax 314-231-6120

webmaster@ewgateway.org
www.ewgateway.org



EAST-WEST GATEWAY Council of Governments

Creating Solutions Across Jurisdictional Boundaries

Chair

Francis G. Slay
Mayor, City of St. Louis

Vice Chair

Mark A. Kern
Chairman, St. Clair County Board

2nd Vice Chair

Charlie A. Dooley
County Executive
St. Louis County

Executive Committee

Alan Dunstan
Chairman, Madison County Board

Steve Ehlmann
County Executive
St. Charles County

John Griesheimer
Presiding Commissioner
Franklin County

Ken Waller
County Executive
Jefferson County

Delbert Wittenauer
Chairman, Board of Commissioners
Monroe County

Members

Mark Eckert
Vice President,
Southwestern Illinois
Council of Mayors

John Hamm III
President, Southwestern Illinois
Metropolitan & Regional
Planning Commission

Ted Hoskins
St. Louis County

Mike Livengood
Franklin County

John Miller
President, Southwestern Illinois
Council of Mayors

Jack Minner
Madison County

Roy Mosley
St. Clair County

Alvin L. Parks, Jr.
Mayor, City of East St. Louis

Lewis Reed
President, Board of Aldermen
City of St. Louis

Thomas P. Schneider
St. Louis County Municipal League

John White
St. Charles County

Regional Citizens

Richard Kellett
John A. Laker

Barbara Geisman
James A. Pulley

Dave Stoecklin

Non-voting Members

Charles Ingersoll
Illinois Department of
Transportation

Eddie Koch
Illinois Department of Commerce
and Economic Opportunity

John Nations
Metro

Brian May
Missouri Office of Administration

Dave Nichols
Missouri Department of
Transportation

Executive Director

Ed Hillhouse

Assistant Executive Director

James M. Wild

Memo to: Board of Directors

From: Staff

Subject: Authorization to Amend Subcontract with South Grand Community Improvement District for the South Grand Rain Garden Project

Date: January 14, 2015

As part of the South Grand Great Streets project, in April 2011 the East-West Gateway Board approved subcontracts with the South Grand Community Improvement District, Metropolitan St. Louis Sewer District, Academy of Science, and the city of St. Louis to install bio-retention features—primarily rain gardens – along the street. Funding for this part of the project came from an Environmental Protection Agency grant, through the Missouri Department of Natural Resources. In the summer of 2014, the city of St. Louis Board of Public Service completed the construction of the rain gardens and bio-retention features. The construction did not include the installation of fencing around the rain gardens and bio-retention features; however, after the construction was completed it became clear that fencing was needed in order to protect the safety of pedestrians.

In December 2014, the Department of Natural Resources authorized the installation of fencing around the rain gardens and bio-retention features and provided EWG a no cost grant extension to provide EWG additional time to install the fencing. The South Grand Community Improvement District agreed to oversee the fencing project and is coordinating the bidding and installation process with the city of St. Louis Board of Public Service.

In order to complete the fencing work, EWG needs authorization from the Board of Directors to amend the subcontract with the South Grand Community Improvement District to provide up to \$45,000 in grant funds for the fencing.

Staff Recommendation: Staff recommends the board authorize the executive director to amend the subcontract with the South Grand Community Improvement District in an amount not to exceed \$45,000 to cover the costs of the fencing around the rain gardens and bio-retention features.

Gateway Tower
One Memorial Drive, Suite 1600
St. Louis, MO 63102-2451

314-421-4220
618-274-2750
Fax 314-231-6120

webmaster@ewgateway.org
www.ewgateway.org



EAST-WEST GATEWAY Council of Governments

Creating Solutions Across Jurisdictional Boundaries

Chair

Francis G. Slay
Mayor, City of St. Louis

Vice Chair

Mark A. Kern
Chairman, St. Clair County Board

2nd Vice Chair

Charlie A. Dooley
County Executive
St. Louis County

Executive Committee

Alan Dunstan
Chairman, Madison County Board

Steve Ehlmann
County Executive
St. Charles County

John Griesheimer
Presiding Commissioner
Franklin County

Ken Waller
County Executive
Jefferson County

Delbert Wittenauer
Chairman, Board of Commissioners
Monroe County

Members

Mark Eckert
Vice President,
Southwestern Illinois
Council of Mayors

John Hamm III
President, Southwestern Illinois
Metropolitan & Regional
Planning Commission

Ted Hoskins
St. Louis County

Mike Livengood
Franklin County

John Miller
President, Southwestern Illinois
Council of Mayors

Jack Minner
Madison County

Roy Mosley
St. Clair County

Alvin L. Parks, Jr.
Mayor, City of East St. Louis

Lewis Reed
President, Board of Aldermen
City of St. Louis

Thomas P. Schneider
St. Louis County Municipal League

John White
St. Charles County

Regional Citizens

Richard Kellett

John A. Laker

Barbara Geisman

James A. Pulley

Dave Stoecklin

Non-voting Members

Charles Ingersoll
Illinois Department of
Transportation

Eddie Koch
Illinois Department of Commerce
and Economic Opportunity

John Nations
Metro

Brian May
Missouri Office of Administration

Dave Nichols
Missouri Department of
Transportation

Executive Director

Ed Hillhouse

Assistant Executive Director

James M. Wild

Memo to: Board of Directors

From: Staff

Subject: Mid-Year Air Quality Conformity Determination and Documentation for the FY 2015-2018 Transportation Improvement Program and related amendments to the Metropolitan Transportation Plan - *RTP 2040*

Date: January 14, 2015

An objective of the transportation planning process is to ensure that the projects and policies set out in the region's long range transportation plan and the region's Transportation Improvement Program (TIP) help reduce, or otherwise minimize, air quality impacts of transportation projects, in accordance with federal, state, and local air quality standards, regulations, and priorities. The specific procedures for reaching this objective are established under Federal law for ensuring conformity between transportation plans and air quality improvement plans.

The conformity process is intended to ensure that the programs and activities proposed in the long-range transportation plan and TIP conform to State Implementation Plans (statewide air quality plans), which set out benchmarks against which progress is measured in meeting national goals for cleaner and healthier air. Under the regulations, the Council is the agency responsible for conducting the conformity determination.

The finding of conformity the Council is responsible for relates to those precursor pollutants produced by automobiles and other on-road transportation, generally described as "mobile source emissions." The pollutants of most concern in this region are ozone and its precursors – nitrogen oxides (NOx) and volatile organic compounds (VOCs) – as well as direct PM 2.5 (particulate matter resulting from vehicle exhaust, brake wear, and tire wear) and NOx as a PM 2.5 precursor.

The conformity analysis typically is completed during the annual update of the TIP and the long-range transportation plan, *RTP 2040*. Projects that receive the most scrutiny during the conformity process are those that add capacity to the transportation system by building new roads, new interchanges or by adding lanes to existing roads. However, whenever modifications are made to the TIP that includes projects that add capacity to the system, the Council is required to make a new conformity determination. If a capacity-adding project is not included in a conformity analysis, it cannot be added to the TIP.

Gateway Tower
One Memorial Drive, Suite 1600
St. Louis, MO 63102-2451

314-421-4220
618-274-2750
Fax 314-231-6120

webmaster@ewgateway.org
www.ewgateway.org

Proposed amendments to the FY 2015-2018 TIP and related amendments to the *RTP 2040* require a new conformity determination. These changes include: construction of a new MetroLink station in the City of St. Louis at Boyle Ave; adding a westbound lane to MO D near Westport in Maryland Heights; modifying the scope for the I-270 project in North St. Louis County (interchange improvements at US 67, road improvements between New Florissant and Old Halls Ferry); and modifying the scope for the David Hoekel Parkway in Wentzville. East-West Gateway staff has updated the travel demand network and has completed the regional emissions model analysis.

Based on the conformity analysis, the projects and programs included in the *Amendment to the FY 2015-2018 TIP and RTP 2040* are found to be in conformity with the requirements of the Clean Air Act Amendments of 1990, the relevant sections of the Final Conformity Rule 40 CFR Part 93, and the Missouri State Conformity Regulations 10 CSR 10-5.480. The finding is documented in the *Air Quality Conformity Determination and Documentation (8-Hour Ozone & PM_{2.5}) for the Amendment to the FY 2015-2018 Transportation Improvement Program and related amendments to RTP 2040*.

The draft of the *Air Quality Conformity Determination and Documentation (8-Hour Ozone & PM_{2.5}) for the FY 2015-2018 Transportation Improvement Program and related amendments to RTP 2040* was made available for public review between December 12, 2014 and January 22, 2015. Once the public comment period closes on January 22, the public comments will be included with the Board of Directors packet. It is not expected that substantive changes to the analysis or the document will be made prior the Board Meeting on January 28.

Staff Recommendation: Staff recommends approval of the Mid-Year *Air Quality Conformity Determination and Documentation (8-Hour Ozone & PM_{2.5}) for the Amendment to the FY 2015-2018 Transportation Improvement Program and related amendments to RTP 2040*.



EAST-WEST GATEWAY Council of Governments

Creating Solutions Across Jurisdictional Boundaries

Chair

Francis G. Slay
Mayor, City of St. Louis

Vice Chair

Mark A. Kern
Chairman, St. Clair County Board

2nd Vice Chair

Charlie A. Dooley
County Executive
St. Louis County

Executive Committee

Alan Dunstan
Chairman, Madison County Board

Steve Ehlmann

County Executive
St. Charles County

John Griesheimer
Presiding Commissioner
Franklin County

Ken Waller

County Executive
Jefferson County

Delbert Wittenauer
Chairman, Board of Commissioners
Monroe County

Members

Mark Eckert

Vice President,
Southwestern Illinois
Council of Mayors

John Hamm III
President, Southwestern Illinois
Metropolitan & Regional
Planning Commission

Ted Hoskins

St. Louis County

Mike Livengood

Franklin County

John Miller

President, Southwestern Illinois
Council of Mayors

Jack Minner

Madison County

Roy Mosley

St. Clair County

Alvin L. Parks, Jr.
Mayor, City of East St. Louis

Lewis Reed

President, Board of Aldermen
City of St. Louis

Thomas P. Schneider
St. Louis County Municipal League

John White

St. Charles County

Regional Citizens

Richard Kellett

John A. Laker

Barbara Geisman

James A. Pulley

Dave Stoecklin

Non-voting Members

Charles Ingersoll

Illinois Department of
Transportation

Edie Koch

Illinois Department of Commerce
and Economic Opportunity

John Nations

Metro

Brian May

Missouri Office of Administration

Dave Nichols

Missouri Department of
Transportation

Executive Director

Ed Hillhouse

Assistant Executive Director

James M. Wild

Memo to: Board of Directors

From: Staff

Subject: Amend the Metropolitan Transportation Plan, *RTP 2040*, to add the David Hoekel Parkway to the fiscally-constrained project list

Date: January 14, 2015

The City of Wentzville, in cooperation with the Missouri Department of Transportation, recently completed an Environmental Assessment for the David Hoekel Parkway. This is a new four-lane roadway that will traverse the northern and western environs of the City, connecting US 61 and I-70 (see attached map). The project will be built in five phases, beginning in 2016 and ending in the 2033-2037 time period, at a year of expenditure cost of \$93.2 million. Both the City and St. Charles County anticipate financing the project.

Before the Federal Highway Administration would approve a Finding of No Significant Impact for the Environmental Assessment, the agency required that the project be on the region's Metropolitan Transportation (Long-Range) Plan's fiscally-constrained project list. The City of Wentzville, therefore, requested that the Plan be amended to include the Parkway. Accomplishing this required two steps. First, the City of Wentzville would have to demonstrate the availability of sufficient local funds to finance the proposed project. Second, the Council's Board of Directors would have to approve amending the Metropolitan Transportation Plan.

To meet the first requirement, both the City of Wentzville and St. Charles County submitted long-range financial plans demonstrating their capacity to fund the project. Correspondingly, both jurisdictions forwarded resolutions executed by their respective councils supporting the project and committing the City and County resources necessary to finance the project. These documents were reviewed by Council staff and were deemed adequate to justify inclusion of the project on the fiscally-constrained project list. Staff is, consequently, requesting that the Board of Directors amend the Metropolitan Transportation Plan to include the David Hoekel Parkway.

Staff Recommendation: Amend the Metropolitan Transportation Plan, *RTP 2040*, to include the David Hoekel Parkway on the Plan's fiscally-constrained project list.

Gateway Tower
One Memorial Drive, Suite 1600
St. Louis, MO 63102-2451

314-421-4220
618-274-2750
Fax 314-231-6120

webmaster@ewgateway.org
www.ewgateway.org



Base Legend

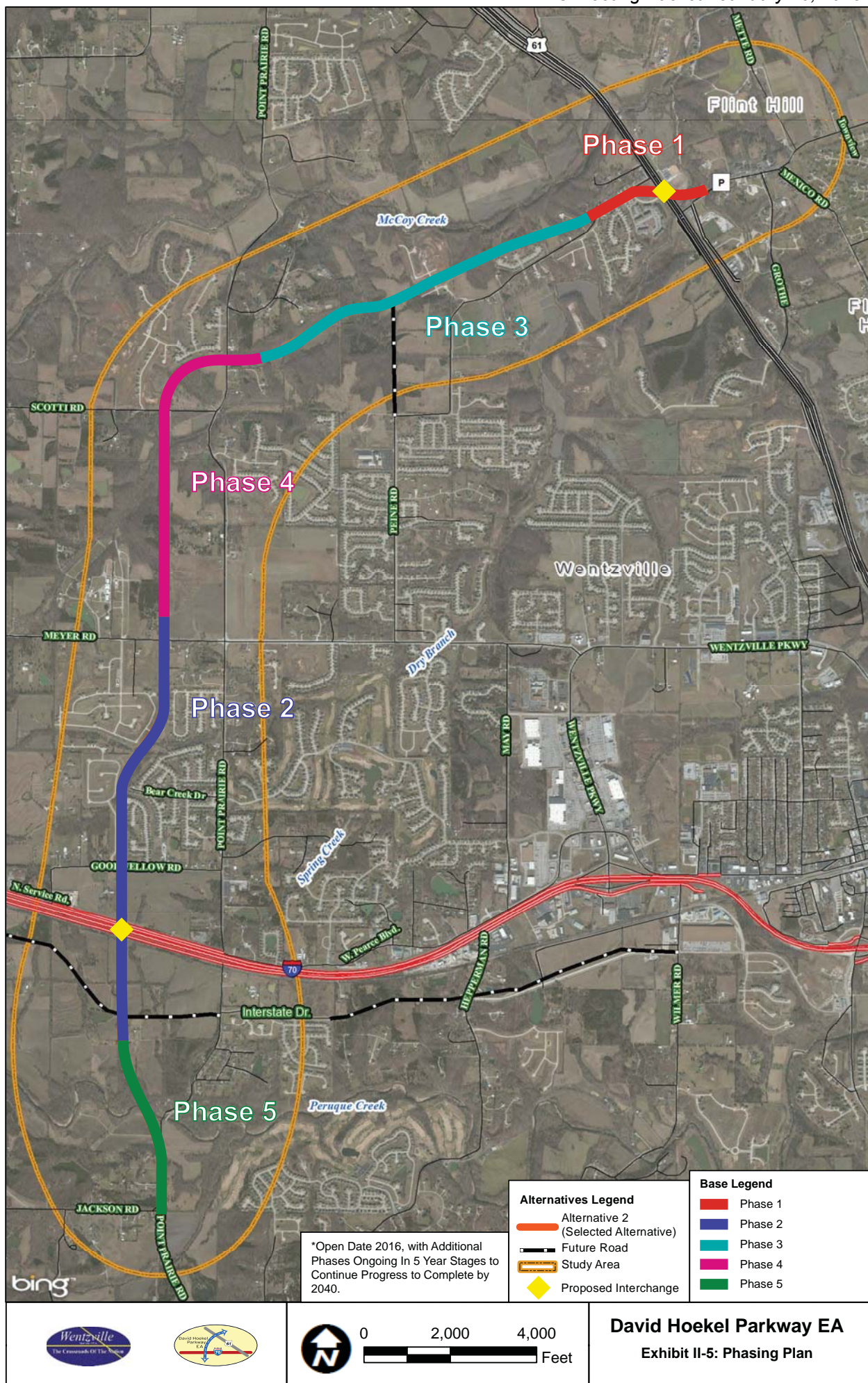
- School
- Church
- Cemetery
- Fire Station
- Hazmat Sites
- Lift Stations
- Park
- Park Boundary
- Streams
- Floodway
- 100 yr Floodplain
- NWI Lake or Pond
- NWI Vegetated Wetland

Alternatives Legend

- Alternative 2 (Selected Alternative)
- Future Road
- Study Area
- Proposed Interchange



David Hoekel Parkway EA
Selected Alternative
Exhibit II-4





EAST-WEST GATEWAY Council of Governments

Creating Solutions Across Jurisdictional Boundaries

To: Board of Directors

From: Staff

Subject: Modification of the FY 2015-2018 Transportation Improvement Program (TIP) – Requested by Illinois project sponsors

Date: January 14, 2015

The Illinois Department of Transportation (IDOT) and East-West Gateway Council of Governments (EWG) is requesting to modify the FY 2015-2018 TIP, *RTP 2040*, and related Air Quality Conformity Determination to add 16 new projects.

New Projects

IDOT

IDOT is requesting to add five new projects. Four projects are funded through the Highway Safety Improvement Program setaside (TIP# 5037-09) and one project is funded through the Railroad-Highway Crossing Program.

The new IDOT projects are summarized below:

New Projects - IDOT					
TIP#/Sponsor	Project Title - Limits	Description	County	Federal Cost	Total Cost
5037V-15/ IDOT	Traffic control signage at various locations	Smart traffic control	Multi-County	\$540,000	\$600,000
5037W-15/ IDOT	IL 4 – 0.1 mi n/o Jefferson Rd to 0.1 mi s/o Moeller Rd	Shoulder, gutter replacement, center line rumble strip	St. Clair	\$495,000	\$550,000
5037X-15/ IDOT	IL 158 – Campbell Ln (Columbia) to Aaron Dr (Belleville)	Rumble strip on shoulders	Multi-County	\$45,000	\$50,000

Chair
Francis G. Slay
Mayor, City of St. Louis

Vice Chair
Mark A. Kern
Chairman, St. Clair County Board

2nd Vice Chair
Charlie A. Dooley
County Executive
St. Louis County

Executive Committee
Alan Dunstan
Chairman, Madison County Board

Steve Ehlmann
County Executive
St. Charles County

John Griesheimer
Presiding Commissioner
Franklin County

Ken Waller
County Executive
Jefferson County

Delbert Wittenauer
Chairman, Board of Commissioners
Monroe County

Members

Mark Eckert
Vice President,
Southwestern Illinois
Council of Mayors

John Hamm III
President, Southwestern Illinois
Metropolitan & Regional
Planning Commission

Ted Hoskins
St. Louis County

Mike Livengood
Franklin County

John Miller
President, Southwestern Illinois
Council of Mayors

Jack Minner
Madison County

Roy Mosley
St. Clair County

Alvin L. Parks, Jr.
Mayor, City of East St. Louis

Lewis Reed
President, Board of Aldermen
City of St. Louis

Thomas P. Schneider
St. Louis County Municipal League

John White
St. Charles County

Regional Citizens

Richard Kellett

John A. Laker

Barbara Geisman

James A. Pulley

Dave Stoecklin

Non-voting Members

Charles Ingersoll
Illinois Department of
Transportation

Eddie Koch
Illinois Department of Commerce
and Economic Opportunity

John Nations
Metro

Brian May
Missouri Office of Administration

Dave Nichols
Missouri Department of
Transportation

Executive Director

Ed Hillhouse

Assistant Executive Director

James M. Wild

Gateway Tower
One Memorial Drive, Suite 1600
St. Louis, MO 63102-2451

314-421-4220
618-274-2750
Fax 314-231-6120

webmaster@ewgateway.org
www.ewgateway.org

New Projects - IDOT					
TIP#/ Sponsor	Project Title - Limits	Description	County	Federal Cost	Total Cost
5037Y-15/ IDOT	Installation of traffic signal indications– at various locations in Madison and St. Clair Cos.	Install right/left arrows	Multi- County	\$1,770,000	\$1,967,000
6527A-15/ IDOT	IL 162 at Alton Southern Railroad crossing	Relocated cantilevers, install circuitry, signals, and gates	Madison	\$400,000	\$500,000
TOTAL				\$3,250,000	\$3,667,000

Local Program

Illinois Safe Routes to School Program

IDOT has identified two new projects that will be funded through their Safe Routes to School Program. This program supports programs and projects that encourage walking and bicycling to and from school. The program applies to schools serving Kindergarten through 8th grade. The projects were selected after a statewide review and competition. Federal funding is through the statewide allotment of Transportation Alternatives Program funds.

The new Safe Routes to School projects are identified below:

New Projects – Local – Safe Routes to School					
TIP#/ Sponsor	Project Title - Limits	Description	County	Federal Cost	Total Cost
6557A-15/ Columbia	Bolm- Schuhkraft Connector – Main St to Columbia Middle School	Construct sidewalk along Monroe St, and shared use path	Monroe	\$158,949	\$198,686

New Projects – Local – Safe Routes to School					
TIP#/Sponsor	Project Title - Limits	Description	County	Federal Cost	Total Cost
6557B-15/ Freeburg	Apple St – West St to Richland Ave	Construct sidewalk	St. Clair	\$160,000	\$200,000
TOTAL				\$318,949	\$398,686

Transportation Alternatives Program

EWG conducted a solicitation for project applications through the Transportation Alternatives Program (TAP). TAP provides funding for on- and off-road pedestrian and bicycle facilities, infrastructure projects for improving non-driver access to public transportation and enhanced mobility, community improvement activities, environmental mitigation, and safe routes to school projects. The TAP funding is suballocated to the St. Louis area through IDOT and EWG received 11 applications requesting \$2.5 million in federal funds.

The projects were evaluated by Council staff using criteria based on principles in the long range plan, *RTP 2040*. Seven projects were recommended based on \$1.6 million in federal funding available to program. The recommended TAP-suballocated projects are summarized in **Attachment A**.

Section 5310 Program

EWG conducted a solicitation for project applications through the Section 5310 program. The Section 5310 Program includes transportation projects and programs that go above and beyond the Americans with Disabilities Act (formerly New Freedom funding). EWG received two New Freedom applications requesting \$0.2 million in federal funds from eligible applicants in the Illinois portion of the region.

The projects were evaluated by Council staff using criteria based on principles in the long range plan, *RTP 2040*. Section 5310 project evaluations were also based on criteria consistent with the Council's Coordinated Human Services Transportation Plan. The recommended Section 5310 projects in Illinois are identified in **Attachment B**:

Staff Recommendation: Staff recommends that the FY 2015-2018 TIP, *RTP 2040*, and related Air Quality Conformity Determination be revised to add 16 new projects as summarized above and detailed in the attachments. These projects are exempt with respect to air quality.

January 14, 2015

Amendment # **0115-051**
TIP # **5037V-15**

PROJECT
SPONSOR: **IDOT**

ACTION
REQUESTED: Revise FY 2015 of the FY 2015-2018 TIP to add a project

TITLE: **Traffic Control Signage**

LIMITS: At various locations

DESCRIPTION: Smart traffic control

COUNTY: Multi-County-IL

FUNDING
SOURCE: Highway Safety Improvement Program (HSIP)

	Federal	Match	Total
PE	\$0	\$0	\$0
ROW	\$0	\$0	\$0
Implementation	\$540,000	\$60,000	\$600,000
Total	\$540,000	\$60,000	\$600,000

AIR QUALITY
CONFORMITY: Exempt – Highway Safety Improvement Program
 implementation (§ 93.126)

STAFF
RECOMMENDATION: Approval

January 14, 2015

Amendment # 0115-052
TIP # 5037W-15
Sponsor # C-98-031-15

**PROJECT
SPONSOR:** IDOT

**ACTION
REQUESTED:** Revise FY 2015 of the FY 2015-2018 TIP to add a project

TITLE: IL 4

LIMITS: 0.1 mi. north of Jefferson Rd to 0.1 mi. south of Moeller Rd

DESCRIPTION: Shoulder, gutter replacement, center line rumble strip

COUNTY: St. Clair

**FUNDING
SOURCE:** Highway Safety Improvement Program (HSIP)

	Federal	Match	Total
PE	\$0	\$0	\$0
ROW	\$0	\$0	\$0
Implementation	\$495,000	\$55,000	\$550,000
Total	\$495,000	\$55,000	\$550,000

**AIR QUALITY
CONFORMITY:** Exempt – Highway Safety Improvement Program
implementation (§ 93.126)

**STAFF
RECOMMENDATION:** Approval

January 14, 2015

Amendment # 0115-053
TIP # 5037X-15
Sponsor # C-98-030-15

**PROJECT
SPONSOR:** IDOT

**ACTION
REQUESTED:** Revise FY 2015 of the FY 2015-2018 TIP to add a project

TITLE: IL 158

LIMITS: Campbell Ln in Columbia to Aaron Dr in Belleville

DESCRIPTION: Rumble strip on shoulder

COUNTY: Multi-County-IL

**FUNDING
SOURCE:** Highway Safety Improvement Program (HSIP)

	Federal	Match	Total
PE	\$0	\$0	\$0
ROW	\$0	\$0	\$0
Implementation	\$45,000	\$5,000	\$50,000
Total	\$45,000	\$5,000	\$50,000

**AIR QUALITY
CONFORMITY:** Exempt – Highway Safety Improvement Program
implementation (§ 93.126)

**STAFF
RECOMMENDATION:** Approval

January 14, 2015

Amendment # 0115-054
TIP # 5037Y-15
Sponsor # C-98-029-15

**PROJECT
SPONSOR:** IDOT

**ACTION
REQUESTED:** Revise FY 2015 of the FY 2015-2018 TIP to add a project

TITLE: Installation of Traffic Signal Indications

LIMITS: At various intersections in Madison and St. Clair Counties

DESCRIPTION: Install right/left arrows

COUNTY: Multi-County-IL

**FUNDING
SOURCE:** Highway Safety Improvement Program (HSIP)

	Federal	Match	Total
PE	\$0	\$0	\$0
ROW	\$0	\$0	\$0
Implementation	\$1,770,000	\$197,000	\$1,967,000
Total	\$1,770,000	\$197,000	\$1,967,000

**AIR QUALITY
CONFORMITY:** Exempt – Highway Safety Improvement Program
implementation (§ 93.126)

**STAFF
RECOMMENDATION:** Approval

January 14, 2015

Amendment # 0115-055
TIP # 6527A-15
Sponsor # C-98-412-14

**PROJECT
SPONSOR:** IDOT

**ACTION
REQUESTED:** Revise FY 2015 of the FY 2015-2018 TIP to add a project

TITLE: IL 162

LIMITS: At Alton Southern Railroad

DESCRIPTION: Relocated cantilevers, install circuitry, signals, and gates

COUNTY: Madison

**FUNDING
SOURCE:** Railroad-Highway Crossing Program (RRXNG)

	Federal	Match	Total
PE	\$0	\$0	\$0
ROW	\$0	\$0	\$0
Implementation	\$400,000	\$100,000	\$500,000
Total	\$400,000	\$100,000	\$500,000

**AIR QUALITY
CONFORMITY:** Exempt – Railroad/highway crossing (§ 93.126)

**STAFF
RECOMMENDATION:** Approval

January 14, 2015

Amendment # **0115-056**
TIP # **6557A-15**

PROJECT
SPONSOR: **Columbia**

ACTION
REQUESTED: Revise FY 2015 of the FY 2015-2018 TIP to add a project

TITLE: **Bolm-Schuhkraft Connector**

LIMITS: Main St to Columbia Middle School

DESCRIPTION: construct sidewalk along Monroe St; Shared use path

COUNTY: Monroe

FUNDING
SOURCE: Transportation Alternatives Program (TAP)

	Federal	Match	Total
PE	\$0	\$0	\$0
ROW	\$0	\$0	\$0
Implementation	\$158,949	\$39,737	\$198,686
Total	\$158,949	\$39,737	\$198,686

AIR QUALITY
CONFORMITY: Exempt – Bicycle and pedestrian facilities (§ 93.126)

STAFF
RECOMMENDATION: Approval

January 14, 2015

Amendment # **0115-057**
TIP # **6557B-15**

PROJECT
SPONSOR: **Freeburg**

ACTION
REQUESTED: Revise FY 2015 & 2016 of the FY 2015-2018 TIP to add a project

TITLE: **Apple Street Sidewalk**

LIMITS: West St to Richland Ave

DESCRIPTION: Construct sidewalk

COUNTY: St. Clair

FUNDING
SOURCE: Transportation Alternatives Program (TAP)

	Federal	Match	Total
PE	\$0	\$0	\$0
ROW	\$0	\$0	\$0
Implementation	\$160,000	\$40,000	\$200,000
Total	\$160,000	\$40,000	\$200,000

AIR QUALITY
CONFORMITY: Exempt – Bicycle and pedestrian facilities (§ 93.126)

STAFF
RECOMMENDATION: Approval

FISCAL YEARS 2015-2018

TRANSPORTATION IMPROVEMENT PROGRAM

ATTACHMENT A - TAP-SUBALLOCATED PROJECT SUMMARIES

COUNTY: MADISON

ID	ORGANIZATION NAME/PROJECT TITLE/DESC	FUNDING CAT	IMPROVEMENTS		2015-2018 TOTAL	2015	2016	2017	2018
6535-15	ALTON COLLEGE AVENUE SIDEWALK HOLMAN ST TO ROCK SPRINGS DR UPGRADE SIDEWALK (5') LENGTH (mi): 0.5 AIR QUALITY STAT: Exempt - 93.126 PROJ PURPOSE: Sustainable Development	TAP-S	Pedestrian Facility	PE ROW IMPL Federal: \$267,750 State: \$0 Local: \$69,750	\$54,000 \$7,500 \$276,000 TOTAL \$337,500	\$54,000 \$0 \$0 \$54,000	\$0 \$7,500 \$276,000 \$283,500	\$0 \$0 \$0 \$0	\$0 \$0 \$0 \$0
					ESTIMATED TOTAL PROJECT COST: \$337,500				
6536-15	EDWARDSVILLE QUINCE ST SHARED USE PATH IL 159/MAGNOLIA TO IL 159/LINDEN SHARED USE PATH (10-12') - SIDEWALK LENGTH (mi): 0.2 AIR QUALITY STAT: Exempt - 93.126 PROJ PURPOSE: Sustainable Development	TAP-S	Bicycle Facilities Pedestrian Facility	PE ROW IMPL Federal: \$189,600 State: \$0 Local: \$87,400	\$31,000 \$10,000 \$236,000 TOTAL \$277,000	\$31,000 \$0 \$0 \$31,000	\$0 \$10,000 \$236,000 \$246,000	\$0 \$0 \$0 \$0	\$0 \$0 \$0 \$0
					ESTIMATED TOTAL PROJECT COST: \$277,000				
6537-15	HARTFORD CENTRAL AVENUE SIDEWALKS W SIXTH ST TO W THIRD ST SIDEWALK (5') LENGTH (mi): 0.18 AIR QUALITY STAT: Exempt - 93.126 PROJ PURPOSE: Sustainable Development	TAP-S	Sidewalks	PE ROW IMPL Federal: \$186,512 State: \$0 Local: \$46,628	\$30,400 \$0 \$202,740 TOTAL \$233,140	\$30,400 \$0 \$0 \$30,400	\$0 \$0 \$202,740 \$202,740	\$0 \$0 \$0 \$0	\$0 \$0 \$0 \$0
					ESTIMATED TOTAL PROJECT COST: \$233,140				
6538-15	HIGHLAND TROXLER AVENUE SHARED USE PATH IL 143 TO IL 160 SHARED USE PATH (10') LENGTH (mi): 0.5 AIR QUALITY STAT: Exempt - 93.126 PROJ PURPOSE: Sustainable Development	TAP-S	Bicycle Facilities Pedestrian Facility	PE ROW IMPL Federal: \$400,000 State: \$0 Local: \$115,000	\$50,000 \$5,000 \$460,000 TOTAL \$515,000	\$50,000 \$0 \$0 \$50,000	\$0 \$5,000 \$460,000 \$465,000	\$0 \$0 \$0 \$0	\$0 \$0 \$0 \$0
					ESTIMATED TOTAL PROJECT COST: \$515,000				

FISCAL YEARS 2015-2018 TRANSPORTATION IMPROVEMENT PROGRAM ATTACHMENT A - TAP-SUBALLOCATED PROJECT SUMMARIES

COUNTY: ST. CLAIR

ID	ORGANIZATION NAME/PROJECT TITLE/DESC	FUNDING CAT	IMPROVEMENTS		2015-2018 TOTAL	2015	2016	2017	2018
6539-15	O'FALLON HINCLIFFE, SCHAEFER, AND KAMPMEYER E.S. SIDEWALKS BUILD SIDEWALKS AROUND ELEMENTARY SCHOOLS SIDEWALK (4-6') LENGTH (mi): 0.76 AIR QUALITY STAT: Exempt - 93.126 PROJ PURPOSE: Sustainable Development	TAP-S	Sidewalks	PE ROW IMPL Federal: \$198,712 State: \$0 Local: \$49,678	\$31,000 \$0 \$217,390 TOTAL \$248,390	\$31,000 \$0 \$0 \$31,000	\$0 \$0 \$217,390 \$217,390	\$0 \$0 \$0 \$0	\$0 \$0 \$0 \$0
					ESTIMATED TOTAL PROJECT COST: \$248,390				
6540-15	O'FALLON SEVEN HILLS ROAD SIDEWALK WILDWOOD LN TO AMELIA CARRIEL JR HIGH SIDEWALK (4') LENGTH (mi): 0.25 AIR QUALITY STAT: Exempt - 93.126 PROJ PURPOSE: Sustainable Development	TAP-S	Sidewalks	PE ROW IMPL Federal: \$240,740 State: \$0 Local: \$61,310	\$30,000 \$3,000 \$269,050 TOTAL \$302,050	\$30,000 \$0 \$0 \$30,000	\$0 \$3,000 \$269,050 \$272,050	\$0 \$0 \$0 \$0	\$0 \$0 \$0 \$0
					ESTIMATED TOTAL PROJECT COST: \$302,050				
6541-15	SHILOH LEBANON AVENUE SIDEWALK SIERRA DR TO TOWERVIEW BAPTIST CHURCH SIDEWALK (7') LENGTH (mi): 0.18 AIR QUALITY STAT: Exempt - 93.126 PROJ PURPOSE: Sustainable Development	TAP-S	Sidewalks	PE ROW IMPL Federal: \$155,857 State: \$0 Local: \$38,964	\$27,832 \$0 \$166,989 TOTAL \$194,821	\$27,832 \$0 \$0 \$27,832	\$0 \$0 \$166,989 \$166,989	\$0 \$0 \$0 \$0	\$0 \$0 \$0 \$0
					ESTIMATED TOTAL PROJECT COST: \$194,821				

FISCAL YEARS 2015-2018
TRANSPORTATION IMPROVEMENT PROGRAM
 ATTACHMENT B - SECTION 5310 PROJECT SUMMARIES

COUNTY: MULTI-COUNTY-I

ID	ORGANIZATION NAME/PROJECT TITLE/DESC	FUNDING CAT	IMPROVEMENTS		2015-2018 TOTAL	2015	2016	2017	2018
6534B-15	CHALLENGE UNLIMITED	S5310	Transit Capital Imps.	PE	\$0	\$0	\$0	\$0	\$0
	VEHICLE ACQUISITION - OPERATING ASSISTANCE		Transit Operating Asst.	ROW	\$0	\$0	\$0	\$0	\$0
	3 LOW FLOORED MINIVANS - FLEET EXPANSION-1 LFMV REPLACE			IMPL	\$340,022	\$340,022	\$0	\$0	\$0
	THREE YEARS OPERATING ASSISTANCE								
	LENGTH (mi): 0		Federal: \$214,705	TOTAL	\$340,022	\$340,022	\$0	\$0	\$0
	AIR QUALITY STAT: Exempt - 93.126		State: \$0						
	PROJ PURPOSE: Access to Opportunity		Local: \$125,317	ESTIMATED TOTAL PROJECT COST:	\$340,022				

FISCAL YEARS 2015-2018
TRANSPORTATION IMPROVEMENT PROGRAM
 ATTACHMENT B - SECTION 5310 PROJECT SUMMARIES

COUNTY: ST. CLAIR

ID	ORGANIZATION NAME/PROJECT TITLE/DESC	FUNDING CAT	IMPROVEMENTS		2015-2018 TOTAL	2015	2016	2017	2018
6534G-15	TOUCHETTE REGIONAL HOSPITAL DIGITAL DISPATCH SYSTEM	S5310	Transit Capital Imps.	PE	\$0	\$0	\$0	\$0	\$0
				ROW	\$0	\$0	\$0	\$0	\$0
				IMPL	\$28,000	\$28,000	\$0	\$0	\$0
	LENGTH (mi): 0		Federal: \$22,400	TOTAL	\$28,000	\$28,000	\$0	\$0	\$0
	AIR QUALITY STAT: Exempt - 93.126		State: \$0						
	PROJ PURPOSE: Access to Opportunity		Local: \$5,600	ESTIMATED TOTAL PROJECT COST:	\$28,000				



EAST-WEST GATEWAY Council of Governments

Creating Solutions Across Jurisdictional Boundaries

To: Board of Directors

From: Staff

Subject: Modification of the FY 2015-2018 Transportation Improvement Program (TIP) – Requested by Missouri project sponsors

Date: January 14, 2015

Metro, the Missouri Department of Transportation (MoDOT), the City of De Soto, and East-West Gateway Council of Governments (EWG) are requesting to revise the FY 2015-2018 TIP, *RTP 2040*, and related Air Quality Conformity Determination to add 40 new projects, and modify one project currently programmed in the FY 2015-2018 TIP.

New Projects

Metro

Metro was awarded one project through the FY 2014 Transportation Investment Generating Economic Recovery (TIGER) Discretionary Grant Program. TIGER grants are awarded to transportation projects that have a significant national or regional impact. The project was selected by the Federal Highway Administration following a national project solicitation. The scope of work will construct a new MetroLink station in the CORTEX District (near Boyle) in the City of St. Louis, expand the Central West End MetroLink station, and construct a bike path to connect from the new MetroLink station to the Great Rivers Greenway network. Total project cost is \$12,875,000 with \$10.3 million coming from TIGER.

The new Metro project is summarized below:

New Projects - Metro					
TIP#/Sponsor	Project Title - Limits	Description	County	Federal Cost	Total Cost
6529-15/ Metro	Central Corridor Transit Enhancement	Construct new MetroLink stn at Boyle, expand CWE MetroLink stn; construct bike path	St. Louis City	\$10,300,000	\$12,875,000
TOTAL				\$10,300,000	\$12,875,000

Gateway Tower
One Memorial Drive, Suite 1600
St. Louis, MO 63102-2451

314-421-4220
618-274-2750
Fax 314-231-6120

webmaster@ewgateway.org
www.ewgateway.org

Chair
Francis G. Lay
Mayor, City of St. Louis

Vice Chair
Mark A. Kern
Chairman, St. Clair County Board

2nd Vice Chair
Charlie A. Dooley
County Executive
St. Louis County

Executive Committee
Alan Dunstan
Chairman, Madison County Board

Steve Ehlmann
County Executive
St. Charles County

John Griesheimer
Presiding Commissioner
Franklin County

Ken Waller
County Executive
Jefferson County

Delbert Wittenauer
Chairman, Board of Commissioners
Monroe County

Members
Mark Eckert
Vice President,
Southwestern Illinois
Council of Mayors

John Hamm III
President, Southwestern Illinois
Metropolitan & Regional
Planning Commission

Ted Hoskins
St. Louis County

Mike Livengood
Franklin County

John Miller
President, Southwestern Illinois
Council of Mayors

Jack Minner
Madison County

Roy Mosley
St. Clair County

Alvin L. Parks, Jr.
Mayor, City of East St. Louis

Lewis Reed
President, Board of Aldermen
City of St. Louis

Thomas P. Schneider
St. Louis County Municipal League

John White
St. Charles County
Regional Citizens

Richard Kellett
John A. Laker
Barbara Geisman
James A. Pulley
Dave Stoecklin

Non-voting Members
Charles Ingersoll
Illinois Department of
Transportation

Eddie Koch
Illinois Department of Commerce
and Economic Opportunity

John Nations
Metro

Brian May
Missouri Office of Administration

Dave Nichols
Missouri Department of
Transportation

Executive Director
Ed Hillhouse

Assistant Executive Director
James M. Wild

MoDOT

MoDOT is requesting to add two new projects. These projects will be funded using cost savings from other projects already completed in this fiscal year. The two projects are on bridges in St. Louis County. One will replace the concrete deck overlay on the US 50 (Lindbergh) bridge over the BNSF railroad for a cost of \$727,000. The other is an epoxy polymer deck overlay on the US 61 (Lemay Ferry) bridge over I-255 for a costs of \$235,000.

The new MoDOT projects are summarized below:

New Projects - MoDOT					
TIP#/ Sponsor	Project Title - Limits	Description	County	Federal Cost	Total Cost
6455-14/ MoDOT	US 50 at BNSF RR	Concrete deck overlay replacement	St. Louis	\$581,000	\$727,000
6456-14/ MoDOT	US 61 over I- 255	Epoxy polymer bridge deck overlay	St. Louis	\$188,000	\$235,000
TOTAL				\$769,000	\$962,000

Local ProgramSurface Transportation Program – Small Urban (STP-N)

The City of De Soto is requesting to add a resurfacing project along Boyd St between MO 21 to N. Thomas St. The total cost is \$211,825. The federal funding for the De Soto project comes from the Surface Transportation Program – Small Urban (STP-N). STP-N funds are allocated to cities that are not within the urbanized area, but have a population greater than 5,000.

The new STP-N project is summarized below:

New Project – STP-N					
TIP#/ Sponsor	Project Title - Limits	Description	County	Federal Cost	Total Cost
6532-15/ De Soto	Boyd St – MO 21 to Thomas	Resurfacing	Jefferson	\$160,628	\$211,825
TOTAL				\$160,628	\$211,825

Transportation Alternatives Program

EWG conducted a solicitation for project applications through the Transportation Alternatives Program (TAP). TAP provides funding for on- and off-road pedestrian and bicycle facilities, infrastructure projects for improving non-driver access to public transportation and enhanced mobility, community improvement activities, environmental mitigation, and safe routes to school projects. The TAP funding is suballocated to the St. Louis area through MoDOT and EWG received 34 applications requesting \$18.2 million in federal funds.

The projects were evaluated by Council staff using criteria based on principles in the long range plan, *RTP 2040*. Fourteen projects were recommended based on \$8.6 million in TAP funding available. The recommended TAP projects are summarized in **Attachment A**.

Section 5310 Program

EWG conducted a solicitation for project applications through the Section 5310 program. The Section 5310 Program provides funding to help improve mobility for seniors and individuals with disabilities by removing barriers to transportation services and expanding the available transportation mobility options. Eligible projects include the acquisition of paratransit vehicles (i.e., Traditional 5310), as well as transportation projects that go above and beyond the ADA (formerly New Freedom funding). EWG received 23 applications requesting \$4.1 million in federal funds.

The projects were evaluated by EWG staff using criteria based on principles in the long range plan, *RTP 2040*. Section 5310 project evaluations were also based on criteria consistent with the Council's Coordinated Human Services Transportation Plan. Of the applications submitted 22 were recommended for funding based on \$2.8 million in Section 5310 funding available. Due to funding constraints, some paratransit service

providers will receive fewer vehicles than they requested. The new Section 5310 projects in Missouri are identified in **Attachment B**:

Modified Project

MoDOT is requesting to modify one project that is currently programmed in the FY 2015-2018 TIP. The modified project is summarized on the next page:

Modified Projects				
TIP#/ Sponsor/ Sponsor # County	Route - Limits	Description	Current Cost/ Revised Cost	Reason for Change
5715-13/ MoDOT/ 6S3008 St. Louis	MO D – Schuetz Rd to Ball Dr	Add auxiliary lane (both directions)	\$3,100,000/ \$3,100,000	Adding westbound auxiliary lane to scope of work

Staff Recommendation: Staff recommends that the FY 2015-2018 TIP, *RTP 2040*, and related Air Quality Conformity Determination be revised to add 40 new projects and modify one project as summarized above and detailed in the attachments. These projects are either exempt with respect to air quality or are included in the current Mid-Year Air Quality Conformity Determination.

January 14, 2015

Amendment # 0115-009
TIP # 6529-15
Sponsor # WO1540

**PROJECT
SPONSOR:** Metro

**ACTION
REQUESTED:** Revise FY 2015 of the FY 2015-2018 TIP to add a project

TITLE: Central Corridor Transit Enhancement

LIMITS: Along MetroLink at Boyle (CORTEX) and Central West End

DESCRIPTION: Construct new MetroLink Station at Boyle, expand Central West End MetroLink Station, bike path at Boyle station

COUNTY: St. Louis City

**FUNDING
SOURCE:** Transportation Investment Generating Economic Recovery Program (TIGER)

	Federal	Match	Total
PE	\$0	\$0	\$0
ROW	\$0	\$0	\$0
Implementation	\$10,300,000	\$2,575,000	\$12,875,000
Total	\$10,300,000	\$2,575,000	\$12,875,000

**AIR QUALITY
CONFORMITY:** Regionally Significant – Included in FY 2015-2018
Air Quality Conformity Determination

**STAFF
RECOMMENDATION:** Approval

January 14, 2015

Amendment # 0115-010
TIP # 6455-14
Sponsor # 6S3103

**PROJECT
SPONSOR:** MoDOT

**ACTION
REQUESTED:** Revise FY 2015 of the FY 2015-2018 TIP to add a project

TITLE: US 50

LIMITS: At BNSF RR

DESCRIPTION: Concrete bridge deck overlay replacement

COUNTY: St. Louis

**FUNDING
SOURCE:** National Highway Performance Program (NHPP)

	Federal	Match	Total
PE	\$71,000	\$18,000	\$89,000
ROW	\$0	\$0	\$0
Implementation	\$510,000	\$128,000	\$638,000
Total	\$581,000	\$146,000	\$727,000

**AIR QUALITY
CONFORMITY:** Exempt – Widening narrow pavements or
reconstructing bridges (§ 93.126)

**STAFF
RECOMMENDATION:** Approval

January 14, 2015

Amendment # 0115-011
TIP # 6456-14
Sponsor # 6S3104

**PROJECT
SPONSOR:** MoDOT

**ACTION
REQUESTED:** Revise FY 2015 of the FY 2015-2018 TIP to add a project

TITLE: US 61

LIMITS: Over I-255

DESCRIPTION: Epoxy polymer bridge deck overlay

COUNTY: St. Louis

**FUNDING
SOURCE:** National Highway Performance Program (NHPP)

	Federal	Match	Total
PE	\$23,200	\$5,800	\$29,000
ROW	\$0	\$0	\$0
Implementation	\$164,800	\$41,200	\$206,000
Total	\$188,000	\$47,000	\$235,000

**AIR QUALITY
CONFORMITY:** Exempt – Widening narrow pavements or
reconstructing bridges (§ 93.126)

**STAFF
RECOMMENDATION:** Approval

January 14, 2015

Amendment # 0115-014
TIP # 6532-15
Sponsor# STP-2200(606)

**PROJECT
SPONSOR:** De Soto

**ACTION
REQUESTED:** Revise FY 2015 of the FY 2015-2018 TIP to add a project

TITLE: Boyd Street

LIMITS: MO 21 to N. Thomas St

DESCRIPTION: Resurfacing

COUNTY: Jefferson

**FUNDING
SOURCE:** Surface Transportation Program – Small Urban(STP-N)

	Federal	Match	Total
PE	\$0	\$0	\$0
ROW	\$0	\$0	\$0
Implementation	\$160,628	\$51,197	\$211,825
Total	\$160,628	\$51,197	\$211,825

**AIR QUALITY
CONFORMITY:** Exempt – Pavement resurfacing and/or rehabilitation
 (§ 93.126)

**STAFF
RECOMMENDATION:** Approval

FISCAL YEARS 2015-2018
TRANSPORTATION IMPROVEMENT PROGRAM
 ATTACHMENT A - TAP-SUBALLOCATED PROJECT SUMMARIES

COUNTY: JEFFERSON

ID	ORGANIZATION NAME/PROJECT TITLE/DESC	FUNDING CAT	IMPROVEMENTS		2015-2018 TOTAL	2015	2016	2017	2018
6545-16	DE SOTO WOODLAND SHARED USE PATH VINELAND ELEM SCHOOL TO DE SOTO HIGH SCHOOL SHARED USE PATH (8')	TAP-S	Bicycle Facilities Pedestrian Facility	PE ROW IMPL	\$33,556 \$0 \$372,849	\$33,556 \$0 \$0	\$0 \$0 \$372,849	\$0 \$0 \$0	\$0 \$0 \$0
	LENGTH (mi): 0.7 AIR QUALITY STAT: Exempt - 93.126 PROJ PURPOSE: Sustainable Development		Federal: \$298,278 State: \$0 Local: \$108,127	TOTAL	\$406,405	\$33,556	\$372,849	\$0	\$0
ESTIMATED TOTAL PROJECT COST:						\$406,405			

FISCAL YEARS 2015-2018

TRANSPORTATION IMPROVEMENT PROGRAM

ATTACHMENT A - TAP-SUBALLOCATED PROJECT SUMMARIES

COUNTY: ST. CHARLES

ID	ORGANIZATION NAME/PROJECT TITLE/DESC	FUNDING CAT	IMPROVEMENTS		2015-2018 TOTAL	2015	2016	2017	2018
6543-15	COTTLEVILLE MO N SHARED USE PATH MOTHERHEAD RD TO MID RIVERS MALL DR SHARED USE PATH (10') LENGTH (mi): 1 AIR QUALITY STAT: Exempt - 93.126 PROJ PURPOSE: Sustainable Development	TAP-S	Bicycle Facilities Pedestrian Facility	PE ROW IMPL Federal: \$600,000 State: \$0 Local: \$150,000	\$55,000 \$73,000 \$622,000 TOTAL \$750,000	\$55,000 \$0 \$0 \$55,000	\$0 \$73,000 \$622,000 \$695,000	\$0 \$0 \$0 \$0	\$0 \$0 \$0 \$0
ESTIMATED TOTAL PROJECT COST:						\$750,000			
6546-16	GREAT RIVERS GREENWAY CENTENNIAL GREENWAY PHASE 2A HERITAGE LANDING TO MUEGGE/OLD 94 SHARED USE PATH/BRIDGE OVER MO 364 (10') LENGTH (mi): 0.7 AIR QUALITY STAT: Exempt - 93.126 PROJ PURPOSE: Sustainable Development	TAP-S	Bicycle Facilities Pedestrian Facility	PE ROW IMPL Federal: \$1,000,000 State: \$0 Local: \$4,286,124	\$621,678 \$0 \$4,664,446 TOTAL \$5,286,124	\$621,678 \$0 \$0 \$621,678	\$0 \$0 \$4,664,446 \$4,664,446	\$0 \$0 \$0 \$0	\$0 \$0 \$0 \$0
ESTIMATED TOTAL PROJECT COST:						\$5,286,124			
6548-15	O'FALLON MO K SHARED USE PATH VARIOUS LOCATIONS ALONG MO K - FEISE TO TECHNOLOGY SHARED USE PATH (10') LENGTH (mi): 1.8 AIR QUALITY STAT: Exempt - 93.126 PROJ PURPOSE: Sustainable Development	TAP-S	Bicycle Facilities Pedestrian Facility	PE ROW IMPL Federal: \$825,481 State: \$0 Local: \$206,370	\$150,000 \$45,000 \$836,851 TOTAL \$1,031,851	\$150,000 \$0 \$0 \$150,000	\$0 \$45,000 \$836,851 \$881,851	\$0 \$0 \$0 \$0	\$0 \$0 \$0 \$0
ESTIMATED TOTAL PROJECT COST:						\$1,031,851			
6549-15	ST. CHARLES FIRST CAPITOL/FIFTH ST 1ST CAPITOL: FIFTH ST TO E/O 2ND; 5TH: 1ST CAP TO MADISON UPGRADE PED FACILITY (5') - UTILITY RELOCATION LENGTH (mi): 0.5 AIR QUALITY STAT: Exempt - 93.126 PROJ PURPOSE: Sustainable Development	TAP-S	Pedestrian Facility Utility Adjustment	PE ROW IMPL Federal: \$720,000 State: \$0 Local: \$430,000	\$60,000 \$0 \$1,090,000 TOTAL \$1,150,000	\$60,000 \$0 \$0 \$60,000	\$0 \$0 \$1,090,000 \$1,090,000	\$0 \$0 \$0 \$0	\$0 \$0 \$0 \$0
ESTIMATED TOTAL PROJECT COST:						\$1,150,000			
6553-15	ST. PETERS MEXICO ROAD SHARED USE PATH BRIDGE OVER SPENCER CREEK SHARED USE PATH (10') LENGTH (mi): 0.1 AIR QUALITY STAT: Exempt - 93.126 PROJ PURPOSE: Sustainable Development	TAP-S	Bicycle Facilities Pedestrian Facility	PE ROW IMPL Federal: \$376,260 State: \$0 Local: \$94,065	\$0 \$0 \$470,325 TOTAL \$470,325	\$0 \$0 \$470,325 \$470,325	\$0 \$0 \$0 \$0	\$0 \$0 \$0 \$0	\$0 \$0 \$0 \$0
ESTIMATED TOTAL PROJECT COST:						\$470,325			

FISCAL YEARS 2015-2018

TRANSPORTATION IMPROVEMENT PROGRAM

ATTACHMENT A - TAP-SUBALLOCATED PROJECT SUMMARIES

COUNTY: ST. LOUIS

ID	ORGANIZATION NAME/PROJECT TITLE/DESC	FUNDING CAT	IMPROVEMENTS		2015-2018 TOTAL	2015	2016	2017	2018
6542-16	CHESTERFIELD CHESTERFIELD PKWY SIDEWALK AND BRIDGE SCHOETTLER VALLEY DRIVE TO 550' N/O CONWAY RD SIDEWALK (6') - BRIDGE (10') LENGTH (mi): 0.4 AIR QUALITY STAT: Exempt - 93.126 PROJ PURPOSE: Sustainable Development	TAP-S	Sidewalks	PE ROW IMPL Federal: \$900,000 State: \$0 Local: \$1,175,000	\$100,000 \$25,000 \$1,950,000 TOTAL \$2,075,000 ESTIMATED TOTAL PROJECT COST: \$2,075,000	\$100,000 \$25,000 \$0 \$125,000	\$0 \$0 \$1,950,000 \$1,950,000	\$0 \$0 \$0 \$0	\$0 \$0 \$0 \$0
6544-16	CREVE COEUR EMERSON ROAD OLD BALLAS ROAD TO LADUE ROAD SIDEWALK (5') LENGTH (mi): 0.7 AIR QUALITY STAT: Exempt - 93.126 PROJ PURPOSE: Sustainable Development	TAP-S	Sidewalks	PE ROW IMPL Federal: \$233,600 State: \$0 Local: \$58,400	\$0 \$0 \$292,000 TOTAL \$292,000 ESTIMATED TOTAL PROJECT COST: \$292,000	\$0 \$0 \$0 \$0	\$0 \$0 \$292,000 \$292,000	\$0 \$0 \$0 \$0	\$0 \$0 \$0 \$0
6547-16	GREAT RIVERS GREENWAY DEER CREEK/ SHADY CREEK GREENWAY LORRAINE DAVIS PARK TO DEER CREEK PARK SHARED USE PATH (10-12') - SHARED LN MARKINGS LENGTH (mi): 1.46 AIR QUALITY STAT: Exempt - 93.126 PROJ PURPOSE: Sustainable Development	TAP-S	Bicycle Facilities Pedestrian Facility Sidewalks Federal: \$800,000 State: \$0 Local: \$1,700,000	PE ROW IMPL TOTAL	\$0 \$0 \$2,500,000 \$2,500,000	\$0 \$0 \$0 \$0	\$0 \$0 \$2,500,000 \$2,500,000	\$0 \$0 \$0 \$0	\$0 \$0 \$0 \$0
6552-15	ST. LOUIS COUNTY CONWAY ROAD SIDEWALK MASON RD TO MASON RD SIDEWALK (5') LENGTH (mi): 0.13 AIR QUALITY STAT: Exempt - 93.126 PROJ PURPOSE: Sustainable Development	TAP-S	Sidewalks Federal: \$783,125 State: \$0 Local: \$335,625	PE ROW IMPL TOTAL	\$75,500 \$175,000 \$868,250 \$1,118,750	\$75,500 \$0 \$0 \$75,500	\$0 \$175,000 \$868,250 \$1,043,250	\$0 \$0 \$0 \$0	\$0 \$0 \$0 \$0
6551-15	ST. LOUIS COUNTY OLD JAMESTOWN ROAD SIDEWALK OLD JAMESTOWN FOREST DR TO JERRIES LN SIDEWALK (5') LENGTH (mi): 0.6 AIR QUALITY STAT: Exempt - 93.126 PROJ PURPOSE: Sustainable Development	TAP-S	Sidewalks Federal: \$440,000 State: \$0 Local: \$110,000	PE ROW IMPL TOTAL	\$38,000 \$0 \$512,000 \$550,000	\$38,000 \$0 \$0 \$38,000	\$0 \$0 \$512,000 \$512,000	\$0 \$0 \$0 \$0	\$0 \$0 \$0 \$0

FISCAL YEARS 2015-2018
TRANSPORTATION IMPROVEMENT PROGRAM
 ATTACHMENT A - TAP-SUBALLOCATED PROJECT SUMMARIES

COUNTY: ST. LOUIS

ID	ORGANIZATION NAME/PROJECT TITLE/DESC	FUNDING CAT	IMPROVEMENTS		2015-2018 TOTAL	2015	2016	2017	2018
6554-15	UNIVERSITY CITY SHARED LANE MARKINGS OLD BONHOMME: CENTENNIAL GRNWAY - 81ST; 81ST: OB-OLIVE 82ND: OLIVE - GROBY; PURDUE: OLIVE - CANTON; JACK: DELMR TO UNIV DR LENGTH (mi): 2.7 AIR QUALITY STAT: Exempt - 93.126 PROJ PURPOSE: Sustainable Development	TAP-S	Bicycle Facilities	PE ROW IMPL TOTAL ESTIMATED TOTAL PROJECT COST:	\$12,845 \$0 \$146,935 \$159,780 \$159,780	\$12,845 \$0 \$0 \$12,845 	\$0 \$0 \$146,935 \$146,935 	\$0 \$0 \$0 \$0 	\$0 \$0 \$0 \$0
6555-15	WILDWOOD MO 100 SHARED USE PATH BRIDGE AT 0.2 MILES EAST OF MO 109 SHARED USE PATH LENGTH (mi): 0.1 AIR QUALITY STAT: Exempt - 93.126 PROJ PURPOSE: Sustainable Development	TAP-S	Bicycle Facilities Pedestrian Facility Federal: \$450,000 State: \$0 Local: \$450,000	PE ROW IMPL TOTAL ESTIMATED TOTAL PROJECT COST:	\$0 \$0 \$900,000 \$900,000 \$900,000	\$0 \$0 \$900,000 \$900,000 	\$0 \$0 \$0 \$0 	\$0 \$0 \$0 \$0 	\$0 \$0 \$0 \$0

FISCAL YEARS 2015-2018
TRANSPORTATION IMPROVEMENT PROGRAM
 ATTACHMENT A - TAP-SUBALLOCATED PROJECT SUMMARIES

COUNTY: ST. LOUIS CITY

ID	ORGANIZATION NAME/PROJECT TITLE/DESC	FUNDING CAT	IMPROVEMENTS		2015-2018 TOTAL	2015	2016	2017	2018
6550-16	ST. LOUIS WASHINGTON AVENUE GRAND BLVD TO THE SHELDON CONCERT HALL PEDESTRIAN FACILITIES (12') - LIGHTING - SHARED LN MARKING LENGTH (mi): 0.1 AIR QUALITY STAT: Exempt - 93.126 PROJ PURPOSE: Sustainable Development	TAP-S	Pedestrian Facility Lighting Bicycle Facilities	PE ROW IMPL	\$300,000 \$0 \$1,300,000	\$300,000 \$0 \$0	\$0 \$0 \$1,300,000	\$0 \$0 \$0	\$0 \$0 \$0
			Federal: \$1,000,000 State: \$0 Local: \$600,000	TOTAL	\$1,600,000	\$300,000	\$1,300,000	\$0	\$0
				ESTIMATED TOTAL PROJECT COST: \$1,600,000					

FISCAL YEARS 2015-2018 TRANSPORTATION IMPROVEMENT PROGRAM ATTACHMENT B - SECTION 5310 PROJECT SUMMARIES

COUNTY: JEFFERSON

ID	ORGANIZATION NAME/PROJECT TITLE/DESC	FUNDING CAT	IMPROVEMENTS		2015-2018 TOTAL	2015	2016	2017	2018
6534C-15	JEFFERSON COUNTY COMMUNITY PARTNERSHIP OPERATING ASSISTANCE THREE YEARS OPERATING ASSISTANCE	S5310	Transit Operating Asst.	PE ROW IMPL	\$0 \$0 \$316,792	\$0 \$0 \$316,792	\$0 \$0 \$0	\$0 \$0 \$0	\$0 \$0 \$0
	LENGTH (mi): 0 AIR QUALITY STAT: Exempt - 93.126 PROJ PURPOSE: Access to Opportunity		Federal: \$158,396 State: \$0 Local: \$158,396	TOTAL	\$316,792	\$316,792	\$0	\$0	\$0
				ESTIMATED TOTAL PROJECT COST: \$316,792					
6533B-15	JEFFERSON COUNTY DEV. DISABILITIES R.B. VEHICLE ACQUISITION FIVE (5) 15 PASSENGER VANS - REPLACEMENT	S5310	Transit Capital Imps.	PE ROW IMPL	\$0 \$0 \$132,420	\$0 \$0 \$132,420	\$0 \$0 \$0	\$0 \$0 \$0	\$0 \$0 \$0
	LENGTH (mi): 0 AIR QUALITY STAT: Exempt - 93.126 PROJ PURPOSE: Preservation		Federal: \$105,936 State: \$0 Local: \$26,484	TOTAL	\$132,420	\$132,420	\$0	\$0	\$0
				ESTIMATED TOTAL PROJECT COST: \$132,420					
6533I-15	NEXTSTEP FOR LIFE VEHICLE ACQUISITION THREE (3) MINIVANS;ONE (1) LOWER FLOORED MINIVAN-REPLACE ONE (1) LOWER FLOORED MINIVAN - FLEET EXPANSION	S5310	Transit Capital Imps.	PE ROW IMPL	\$0 \$0 \$146,490	\$0 \$0 \$146,490	\$0 \$0 \$0	\$0 \$0 \$0	\$0 \$0 \$0
	LENGTH (mi): 0 AIR QUALITY STAT: Exempt - 93.126 PROJ PURPOSE: Access to Opportunity		Federal: \$117,192 State: \$0 Local: \$29,298	TOTAL	\$146,490	\$146,490	\$0	\$0	\$0
				ESTIMATED TOTAL PROJECT COST: \$146,490					

FISCAL YEARS 2015-2018 TRANSPORTATION IMPROVEMENT PROGRAM ATTACHMENT B - SECTION 5310 PROJECT SUMMARIES

COUNTY: MULTI-COUNTY-M

ID	ORGANIZATION NAME/PROJECT TITLE/DESC	FUNDING CAT	IMPROVEMENTS		2015-2018 TOTAL	2015	2016	2017	2018
6534F-15	DISABILITY RESOURCE ASSOCIATION OPERATING ASSISTANCE 1 YEAR OPERATING ASSISTANCE	S5310	Transit Operating Asst.	PE ROW IMPL	\$0 \$0 \$296,492	\$0 \$0 \$296,492	\$0 \$0 \$0	\$0 \$0 \$0	\$0 \$0 \$0
	LENGTH (mi): 0 AIR QUALITY STAT: Exempt - 93.126 PROJ PURPOSE: Access to Opportunity		Federal: \$148,246 State: \$0 Local: \$148,246	TOTAL	\$296,492	\$296,492	\$0	\$0	\$0
				ESTIMATED TOTAL PROJECT COST: \$296,492					
6533C-15	DISABILITY RESOURCE ASSOCIATION VEHICLE ACQUISITION FOUR (4) LOWERED FLOOR MINIVANS - REPLACEMENT	S5310	Transit Capital Imps.	PE ROW IMPL	\$0 \$0 \$148,980	\$0 \$0 \$148,980	\$0 \$0 \$0	\$0 \$0 \$0	\$0 \$0 \$0
	LENGTH (mi): 0 AIR QUALITY STAT: Exempt - 93.126 PROJ PURPOSE: Preservation		Federal: \$119,184 State: \$0 Local: \$29,796	TOTAL	\$148,980	\$148,980	\$0	\$0	\$0
				ESTIMATED TOTAL PROJECT COST: \$148,980					
6533G-15	EMMAUS HOMES VEHICLE ACQUISITION EIGHT (8) LOWERED FLOOR MINIVANS - REPLACEMENT	S5310	Transit Capital Imps.	PE ROW IMPL	\$0 \$0 \$289,960	\$0 \$0 \$289,960	\$0 \$0 \$0	\$0 \$0 \$0	\$0 \$0 \$0
	LENGTH (mi): 0 AIR QUALITY STAT: Exempt - 93.126 PROJ PURPOSE: Preservation		Federal: \$231,968 State: \$0 Local: \$57,992	TOTAL	\$289,960	\$289,960	\$0	\$0	\$0
				ESTIMATED TOTAL PROJECT COST: \$289,960					
6533H-15	INDEPENDENCE CENTER VEHICLE ACQUISITION ONE (1) 15 PASSENGER VAN - REPLACEMENT	S5310	Transit Capital Imps.	PE ROW IMPL	\$0 \$0 \$26,484	\$0 \$0 \$26,484	\$0 \$0 \$0	\$0 \$0 \$0	\$0 \$0 \$0
	LENGTH (mi): 0 AIR QUALITY STAT: Exempt - 93.126 PROJ PURPOSE: Preservation		Federal: \$21,187 State: \$0 Local: \$5,297	TOTAL	\$26,484	\$26,484	\$0	\$0	\$0
				ESTIMATED TOTAL PROJECT COST: \$26,484					
6534A-15	METRO METRO BUS STOP SIGNAGE REPLACEMENT, PHASE 2 INSTALLATION OF METRO BUS STOP SIGNAGE WITH IMPROVED VISABILITY AND ADA COMPLIANT	S5310	Signing Transit Improvements	PE ROW IMPL	\$0 \$0 \$949,676	\$0 \$0 \$949,676	\$0 \$0 \$0	\$0 \$0 \$0	\$0 \$0 \$0
	LENGTH (mi): 0 AIR QUALITY STAT: Exempt - 93.126 PROJ PURPOSE: Access to Opportunity		Federal: \$759,741 State: \$0 Local: \$189,935	TOTAL	\$949,676	\$949,676	\$0	\$0	\$0
				ESTIMATED TOTAL PROJECT COST: \$949,676					

FISCAL YEARS 2015-2018 TRANSPORTATION IMPROVEMENT PROGRAM ATTACHMENT B - SECTION 5310 PROJECT SUMMARIES

COUNTY: MULTI-COUNTY-M

ID	ORGANIZATION NAME/PROJECT TITLE/DESC	FUNDING CAT	IMPROVEMENTS		2015-2018 TOTAL	2015	2016	2017	2018
6533A-15	OATS VEHICLE ACQUISITION TWO (2) WIDE BODY CUTAWAYS - REPLACEMENT	S5310	Transit Capital Imps.	PE ROW IMPL	\$0 \$0 \$104,850	\$0 \$0 \$104,850	\$0 \$0 \$0	\$0 \$0 \$0	\$0 \$0 \$0
	LENGTH (mi): 0 AIR QUALITY STAT: Exempt - 93.126 PROJ PURPOSE: Preservation		Federal: \$83,880 State: \$0 Local: \$20,970	TOTAL	\$104,850	\$104,850	\$0	\$0	\$0
				ESTIMATED TOTAL PROJECT COST: \$104,850					
6534D-15	PARAQUAD OPERATING ASSISTANCE TWO YEARS OPERATING ASSISTANCE	S5310	Transit Operating Asst.	PE ROW IMPL	\$0 \$0 \$383,940	\$0 \$0 \$383,940	\$0 \$0 \$0	\$0 \$0 \$0	\$0 \$0 \$0
	LENGTH (mi): 0 AIR QUALITY STAT: Exempt - 93.126 PROJ PURPOSE: Access to Opportunity		Federal: \$191,970 State: \$0 Local: \$191,970	TOTAL	\$383,940	\$383,940	\$0	\$0	\$0
				ESTIMATED TOTAL PROJECT COST: \$383,940					
6533L-15	PARAQUAD VEHICLE ACQUISITION ONE (1) MEDIUM DUTY VEHICLE - FLEET EXPANSION	S5310	Transit Capital Imps.	PE ROW IMPL	\$0 \$0 \$123,972	\$0 \$0 \$123,972	\$0 \$0 \$0	\$0 \$0 \$0	\$0 \$0 \$0
	LENGTH (mi): 0 AIR QUALITY STAT: Exempt - 93.126 PROJ PURPOSE: Access to Opportunity		Federal: \$99,178 State: \$0 Local: \$24,794	TOTAL	\$123,972	\$123,972	\$0	\$0	\$0
				ESTIMATED TOTAL PROJECT COST: \$123,972					
6533D-15	PONY BIRD VEHICLE ACQUISITION ONE (1) LOWERED FLOOR MINIVAN; ONE (1) WIDE BODY CUTAWAY REPLACEMENT	S5310	Transit Capital Imps.	PE ROW IMPL	\$0 \$0 \$87,923	\$0 \$0 \$87,923	\$0 \$0 \$0	\$0 \$0 \$0	\$0 \$0 \$0
	LENGTH (mi): 0 AIR QUALITY STAT: Exempt - 93.126 PROJ PURPOSE: Preservation		Federal: \$70,338 State: \$0 Local: \$17,585	TOTAL	\$87,923	\$87,923	\$0	\$0	\$0
				ESTIMATED TOTAL PROJECT COST: \$87,923					
6533N-15	ST ELIZABETH ADULT DAY CARE CENTER VEHICLE ACQUISITION ONE (1) 15 PASSENGER VAN - REPLACEMENT	S5310	Transit Capital Imps.	PE ROW IMPL	\$0 \$0 \$26,484	\$0 \$0 \$26,484	\$0 \$0 \$0	\$0 \$0 \$0	\$0 \$0 \$0
	LENGTH (mi): 0 AIR QUALITY STAT: Exempt - 93.126 PROJ PURPOSE: Preservation		Federal: \$21,187 State: \$0 Local: \$5,297	TOTAL	\$26,484	\$26,484	\$0	\$0	\$0
				ESTIMATED TOTAL PROJECT COST: \$26,484					

FISCAL YEARS 2015-2018

TRANSPORTATION IMPROVEMENT PROGRAM

ATTACHMENT B - SECTION 5310 PROJECT SUMMARIES

COUNTY: ST. CHARLES

ID	ORGANIZATION NAME/PROJECT TITLE/DESC	FUNDING CAT	IMPROVEMENTS		2015-2018 TOTAL	2015	2016	2017	2018
6533M-15	CARDINAL RITTER SENIOR SERVICES VEHICLE ACQUISITION ONE (1) WIDE BODY CUTAWAY - REPLACEMENT	S5310	Transit Capital Imps.	PE ROW IMPL	\$0 \$0 \$51,851	\$0 \$0 \$51,851	\$0 \$0 \$0	\$0 \$0 \$0	\$0 \$0 \$0
	LENGTH (mi): 0 AIR QUALITY STAT: Exempt - 93.126 PROJ PURPOSE: Preservation		Federal: \$41,481 State: \$0 Local: \$10,370	TOTAL	\$51,851	\$51,851	\$0	\$0	\$0
				ESTIMATED TOTAL PROJECT COST: \$51,851					
6533F-15	COMMUNITY LIVING VEHICLE ACQUISITION EIGHT (8) LOWERED FLOOR MINIVANS; TWO (2) PASS. VANS - REPLACEMENT; TWO (2) WIDE BODY CUTAWAYS - FLEET EXPANSION	S5310	Transit Capital Imps.	PE ROW IMPL	\$0 \$0 \$449,078	\$0 \$0 \$449,078	\$0 \$0 \$0	\$0 \$0 \$0	\$0 \$0 \$0
	LENGTH (mi): 0 AIR QUALITY STAT: Exempt - 93.126 PROJ PURPOSE: Access to Opportunity		Federal: \$359,262 State: \$0 Local: \$89,816	TOTAL	\$449,078	\$449,078	\$0	\$0	\$0
				ESTIMATED TOTAL PROJECT COST: \$449,078					
6533K-15	CRIDER HEALTH CENTER VEHICLE ACQUISITION THREE (3) 15 PASSENGER VANS - REPLACEMENT	S5310	Transit Capital Imps.	PE ROW IMPL	\$0 \$0 \$79,452	\$0 \$0 \$79,452	\$0 \$0 \$0	\$0 \$0 \$0	\$0 \$0 \$0
	LENGTH (mi): 0 AIR QUALITY STAT: Exempt - 93.126 PROJ PURPOSE: Preservation		Federal: \$63,562 State: \$0 Local: \$15,890	TOTAL	\$79,452	\$79,452	\$0	\$0	\$0
				ESTIMATED TOTAL PROJECT COST: \$79,452					
6534E-15	ITN ST CHARLES OPERATING ASSISTANCE 1 YEAR OPERATING ASSISTANCE	S5310	Transit Operating Asst.	PE ROW IMPL	\$0 \$0 \$124,842	\$0 \$0 \$124,842	\$0 \$0 \$0	\$0 \$0 \$0	\$0 \$0 \$0
	LENGTH (mi): 0 AIR QUALITY STAT: Exempt - 93.126 PROJ PURPOSE: Access to Opportunity		Federal: \$62,421 State: \$0 Local: \$62,421	TOTAL	\$124,842	\$124,842	\$0	\$0	\$0
				ESTIMATED TOTAL PROJECT COST: \$124,842					
6533O-15	ITN ST CHARLES VEHICLE ACQUISITION TWO (2) FULL SIZE SEDANS - FLEET EXPANSION	S5310	Transit Capital Imps.	PE ROW IMPL	\$0 \$0 \$43,010	\$0 \$0 \$43,010	\$0 \$0 \$0	\$0 \$0 \$0	\$0 \$0 \$0
	LENGTH (mi): 0 AIR QUALITY STAT: Exempt - 93.126 PROJ PURPOSE: Access to Opportunity		Federal: \$34,408 State: \$0 Local: \$8,602	TOTAL	\$43,010	\$43,010	\$0	\$0	\$0
				ESTIMATED TOTAL PROJECT COST: \$43,010					

FISCAL YEARS 2015-2018
TRANSPORTATION IMPROVEMENT PROGRAM
 ATTACHMENT B - SECTION 5310 PROJECT SUMMARIES

COUNTY: ST. CHARLES

ID	ORGANIZATION NAME/PROJECT TITLE/DESC	FUNDING CAT	IMPROVEMENTS		2015-2018 TOTAL	2015	2016	2017	2018
6533P-15	ST LOUIS LIFE VEHICLE ACQUISITION ONE (1) 15 PASSENGER VAN - REPLACEMENT	S5310	Transit Capital Imps.	PE	\$0	\$0	\$0	\$0	\$0
				ROW	\$0	\$0	\$0	\$0	\$0
				IMPL	\$26,484	\$26,484	\$0	\$0	\$0
	LENGTH (mi): 0		Federal: \$21,187	TOTAL	\$26,484	\$26,484	\$0	\$0	\$0
	AIR QUALITY STAT: Exempt - 93.126		State: \$0						
	PROJ PURPOSE: Preservation		Local: \$5,297	ESTIMATED TOTAL PROJECT COST:	\$26,484				

FISCAL YEARS 2015-2018
TRANSPORTATION IMPROVEMENT PROGRAM
 ATTACHMENT B - SECTION 5310 PROJECT SUMMARIES

COUNTY: ST. LOUIS

ID	ORGANIZATION NAME/PROJECT TITLE/DESC	FUNDING CAT	IMPROVEMENTS		2015-2018 TOTAL	2015	2016	2017	2018
6533Q-15	BELLEFONTAINE NEIGHBORS VEHICLE ACQUISITION ONE (1) WIDE BODY CUTAWAY - REPLACEMENT	S5310	Transit Capital Imps.	PE ROW IMPL	\$0 \$0 \$50,625	\$0 \$0 \$50,625	\$0 \$0 \$0	\$0 \$0 \$0	\$0 \$0 \$0
	LENGTH (mi): 0 AIR QUALITY STAT: Exempt - 93.126 PROJ PURPOSE: Preservation		Federal: \$40,500 State: \$0 Local: \$10,125	TOTAL	\$50,625	\$50,625	\$0	\$0	\$0
					ESTIMATED TOTAL PROJECT COST: \$50,625				

FISCAL YEARS 2015-2018
TRANSPORTATION IMPROVEMENT PROGRAM
 ATTACHMENT B - SECTION 5310 PROJECT SUMMARIES

COUNTY: ST. LOUIS CITY

ID	ORGANIZATION NAME/PROJECT TITLE/DESC	FUNDING CAT	IMPROVEMENTS		2015-2018 TOTAL	2015	2016	2017	2018
6533E-15	CITY SENIORS VEHICLE ACQUISITION ONE (1) LOWERED FLOOR MINIVAN - REPLACEMENT	S5310	Transit Capital Imps.	PE ROW IMPL	\$0 \$0 \$37,245	\$0 \$0 \$37,245	\$0 \$0 \$0	\$0 \$0 \$0	\$0 \$0 \$0
	LENGTH (mi): 0 AIR QUALITY STAT: Exempt - 93.126 PROJ PURPOSE: Preservation		Federal: \$29,796 State: \$0 Local: \$7,449	TOTAL	\$37,245	\$37,245	\$0	\$0	\$0
				ESTIMATED TOTAL PROJECT COST: \$37,245					
6533J-15	NORTHSIDE YOUTH & SR SERVICES VEHICLE ACQUISITION THREE (3) 15 PASSENGER VANS - REPLACEMENT	S5310	Transit Capital Imps.	PE ROW IMPL	\$0 \$0 \$79,452	\$0 \$0 \$79,452	\$0 \$0 \$0	\$0 \$0 \$0	\$0 \$0 \$0
	LENGTH (mi): 0 AIR QUALITY STAT: Exempt - 93.126 PROJ PURPOSE: Preservation		Federal: \$63,562 State: \$0 Local: \$15,890	TOTAL	\$79,452	\$79,452	\$0	\$0	\$0
				ESTIMATED TOTAL PROJECT COST: \$79,452					



EAST-WEST GATEWAY Council of Governments

Creating Solutions Across Jurisdictional Boundaries

Chair

Francis G. Slay
Mayor, City of St. Louis

Vice Chair

Mark A. Kern
Chairman, St. Clair County Board

2nd Vice Chair

Charlie A. Dooley
County Executive
St. Louis County

Executive Committee

Alan Dunstan
Chairman, Madison County Board

Steve Ehlmann
County Executive
St. Charles County

John Griesheimer
Presiding Commissioner
Franklin County

Ken Waller
County Executive
Jefferson County

Delbert Wittenauer
Chairman, Board of Commissioners
Monroe County

Members

Mark Eckert
Vice President,
Southwestern Illinois
Council of Mayors

John Hamm III
President, Southwestern Illinois
Metropolitan & Regional
Planning Commission

Ted Hoskins
St. Louis County

Mike Livengood
Franklin County

John Miller
President, Southwestern Illinois
Council of Mayors

Jack Minner
Madison County

Roy Mosley
St. Clair County

Alvin L. Parks, Jr.
Mayor, City of East St. Louis

Lewis Reed
President, Board of Aldermen
City of St. Louis

Thomas P. Schneider
St. Louis County Municipal League

John White
St. Charles County

Regional Citizens

Richard Kellett

John A. Laker

Barbara Geisman

James A. Pulley

Dave Stoecklin

Non-voting Members

Charles Ingersoll
Illinois Department of
Transportation

Eddie Koch
Illinois Department of Commerce
and Economic Opportunity

John Nations
Metro

Brian May
Missouri Office of Administration

Dave Nichols
Missouri Department of
Transportation

Executive Director

Ed Hillhouse

Assistant Executive Director

James M. Wild

Memo to: Board of Directors

From: Staff

Subject: Regional Security Expenditures

Date: January 14, 2015

Staff is requesting authorization to expend funds in support of regional security that will improve the region's disaster preparedness and response capabilities. Funding will come from the U.S. Department of Homeland Security's Urban Areas Security Initiative (UASI) and the U.S. Department of Health and Senior Services, Assistant Secretary of Preparedness and Response (ASPR) grant programs. Attachment A summarizes these purchases totaling **\$348,119**. Also attached is a summary description of all budgeted expenditures from the UASI grants (Attachment B).

1. All Ready Disaster Preparedness

Preparedness Brochures – Preparedness Brochures – We are requesting approval to purchase 92,350 disaster preparedness brochures for children and adults from the American Red Cross. These brochures cover specific preparedness topics and make preparedness recommendations for fire, earthquake, tornado and other threats or hazards. They will be distributed throughout the St Louis region as part of the Disaster Preparedness Awareness Campaign. Total costs will not exceed **\$15,604**.

All Ready Survey Focus Groups – We are requesting authorization to amend the existing contract with M. Davis and Company to include up to two additional focus groups as part of the regional disaster preparedness survey that is currently underway. The contract with M. Davis includes 12 focus groups with various populations and includes the option to conduct additional focus groups, if needed. During the course of the survey, we determined that additional focus groups would be needed in order to improve the qualitative data captured for the project. As a result, we will be asking M. Davis to perform up to two additional focus groups. The participants for these additional focus groups will be determined once all of the data from the general population survey is analyzed. The additional focus groups will be conducted within the current performance period of the contract. Total costs will not exceed **\$18,000**.

Gateway Tower
One Memorial Drive, Suite 1600
St. Louis, MO 63102-2451

314-421-4220
618-274-2750
Fax 314-231-6120

webmaster@ewgateway.org
www.ewgateway.org

2. Hospital Medical Surge

Hospital Evacuation/Medical Transport Coordination Plan – in 2014 the STARRS Hospital Preparedness Committee, the STARRS EMS Committee and representatives from the region’s public health and emergency management agencies developed the St. Louis Regional Hospital Evacuation and Transportation Plan. Phase I of this project focused preparing the hospital or medical facility for evacuation and coordinating the transport of patients off site to other facilities. There is a need now to hire a consultant to take this project into Phase II by conducting seminars and exercises to familiarize stakeholder representatives with the plan, test its components and develop procedures and guidance for hospital staff and patient re-entry into hospitals after an evacuation. Therefore, we are requesting approval to contract with Havron and Associates, LLP to provide consultant services for Phase II of the Hospital Evacuation/Medical Transport Coordination plan. Total costs will not exceed **\$76,015**.

3. Regional Collaboration

Intermedix WebEOC – We are requesting approval to contract with Intermedix/ESi to provide the St. Louis region with a new disaster incident management software called WebEOC. This regional emergency resource collaboration system will help ensure the long term presence of an essential regional tool by significantly reducing recurring costs and allowing integration with existing state disaster incident management systems in Illinois and Missouri, thereby reducing or eliminating “double data entry” between disparate systems. Agencies will be able to post situational status messages and request regional and state resources when a major disaster or emergency incident occurs. The system also improves upon resource and asset tracking capabilities allowing real time notice of existing resource capabilities. Total cost will not exceed **\$198,500**.

4. Urban Search and Rescue Training

Structural Collapse Tech and Structural Collapse Operations – We are requesting approval to contract with the University of Missouri Fire Rescue Training Institute to provide two Urban Search and Rescue (USAR) training courses; Structural Collapse Tech and Structural Collapse Operations. These 40-hour courses will prepare the members of the five regional USAR teams to initiate rescue operations in structural collapse emergencies. The cost of each course is \$20,000; total costs will not exceed **\$40,000**.

All of the purchases described in this memo are being made in accordance with the agency's procurement policy.

Staff Recommendation: Staff recommends that the Board approve the expenditure of funds as follows:

- for the purchase of 92,530 brochures from the American Red Cross in an amount not to exceed **\$15,604**;
- allow the Executive Director to amend the existing M. Davis and Company contract to add two additional focus groups in an amount not to exceed **\$18,000**;
- allow the Executive Director to enter into a contract with Havron and Associates, LLP to provide consultant services that will take the St. Louis Regional Hospital Evacuation and Transportation Plan into Phase II in an amount not to exceed **\$76,015** ;
- allow the Executive Director to enter into a contract with Intermedix/ESi to for the implementation of the WebEOC disaster incident management system in an amount not to exceed **\$198,500**;
- allow the Executive Director to enter into a contract with the University of Missouri Fire and Rescue Training Institute to provide two Urban Search and Rescue (USAR) training courses; Structural Collapse Tech and Structural Collapse Operations in an amount not to exceed **\$40,000**,

for a total amount not to exceed **\$348,119** from the UASI and ASPR grant programs.

ATTACHMENT A

Expenditures for Equipment and Services
January 14, 2014

<u>Category</u>	<u>Vendor</u>	<u>Description</u>	<u>Jurisdiction/Agency</u>	<u>Quantity</u>	<u>Cost</u>
Emergency Response Planning (UASI)					
1	American Red Cross (St. Louis, MO)	Preparedness brochures	Regional	92,530	\$15,604
	M. Davis and Company (Philadelphia, PA)	All Ready Survey focus groups	Regional	1	\$18,000
Emergency Response Planning (ASPR)					
2	Havron and Associates (Austin, TX)	Regional Hospital Evacuation and Transportation Plan Phase II	Regional	1	\$76,015
Emergency Response Equipment / Software (UASI)					
3	Intermedix/Esi (Fort Lauderdale, FL)	WebEOC disaster incident management system	Regional	1	\$198,500
Emergency Response Training (UASI)					
4	University of Missouri Fire Rescue Training Institute (Columbia, MO)	Urban Search and Rescue Training	Regional	28	\$40,000
TOTAL EXPENDITURES					\$348,119

Total UASI Expenditures: \$272,104

Total ASPR Expenditures: \$76,015

Categories:

- 1 - All Ready Disaster Preparedness
- 2 - Hospital Medical Surge
- 3 - Regional Collaboration
- 4 - Urban Search and Rescue Training

		Total Budgeted	Prior amount approved by EWG Board	This request	Remaining to be approved
Critical Response Teams					
A key goal under the UASI Strategy is to strengthen our critical response teams. We have largely accomplished this goal with hazardous materials and heavy rescue equipment and training. These teams are capable of responding to terrorist attacks, industrial accidents or natural disasters like earthquakes and tornadoes. Another element of critical response includes medical supplies for mass casualty incidents. The MCI trailers represent the first stage of meeting this need for the EMS community. Also included is equipment for Incident Management Teams that will consist of emergency responders from all disciplines. These mobile teams are activated to support emergency responders managing an event where the event continues over many hours or days.	Hazmat / HR	\$17,993,651	\$17,908,651	\$0	\$85,000
	Mass Casualty	903,000	829,682	0	73,318
	Incident Management Teams	2,196,000	1,977,711	0	218,289
Law Enforcement Tactical Team Equipment					
There are 7 law enforcement tactical response units in the region which need communications, tactical lights and personal protective equipment. Three of the teams will receive tactical vehicles and Metro Air Support will receive a helicopter and other equipment to support response to a variety of terrorist incidents.	Misc equipment:	7,582,356	7,354,711	0	227,645
	Tactical vehicles:	4,514,819	4,514,819	0	0
Interoperable Communications					
A variety of projects come within the description of Interoperable Communications. Radio caches, satellite phones and video conferencing and the Land Mobile Radio Communications Plan are included, as well as a microwave tower backbone system.	Radios, phones, video conf. etc:	8,386,622	8,321,622	0	65,000
	Microwave system:	8,988,047	8,988,047	0	0
	Radio Plan:	674,300	674,300	0	\$0
The Virtual EOC					
The virtual EOC strengthens regional collaboration on a day to day basis through a web based interactive network that links the region's eight EOC's and numerous other users for planning, preparing for and responding to an incident. In future years we hope to add a robust Geographic Information System capability.		5,322,438	5,278,534	0	43,904

	Total Budgeted	Prior amount approved by EWG Board	This request	Remaining to be approved
Emergency Patient Tracking				
Patient Tracking allows emergency medical services and hospitals to rapidly enter data about a patient into a secure wireless web-based tracking system. The data includes identification, triage condition and transport information and allows the hospitals to balance patient loads and provide information to families.	\$2,422,320	\$2,422,320	\$0	\$0
Universal ID Project				
This system provides a uniform identification card for fire, law enforcement and volunteers with credential information embedded in the card.	557,812	557,812	0	0
Expand Public Health Capabilities				
Local public health agencies are working to prepare the region and protect citizens and first responders in the event of bioterrorism and natural diseases. Work is underway to establish an automated syndromic surveillance system for the early detection of naturally occurring or man made disease outbreaks.	2,828,131	2,522,061	0	306,070
Mass Casualty Equipment, Medical Supplies and Software for Hospitals				
Hospitals are preparing the region for a response to a medical surge or mass casualty incident (MCI) by staging emergency response trailers that are equipped with medical supplies, cots and bedding at selected hospitals for deployment anywhere in the St. Louis region. In addition, the hospitals will dispense medicine to employees, their families and patients in the event of a large-scale bioterrorist or naturally occurring illness. The hospitals have software that will help with the dispensing of this medicine and the management of an MCI when it occurs.	2,249,599	2,107,999	0	141,600
Disaster Incident Management System for Hospitals and Tactical Response				
The disaster incident management software system provides a tactical incident management capability for hospitals and response teams that includes federally required forms and plans. For the hospital systems it also includes a regional bed tracking capability.	\$2,234,308	\$1,959,308	\$198,500	\$76,500

	Total Budgeted	Prior amount approved by EWG Board	This request	Remaining to be approved
Terrorism Early Warning Center				
The TEW is operated by the St. Louis Metropolitan Police Department and the St. Louis County Police Department and serves as a central clearinghouse for information and intelligence to help detect and prevent acts of terrorism.	\$ 3,142,602	\$2,599,000	\$0	\$543,602
Citizen Preparedness				
This program includes Citizen Emergency Response Teams and other similar teams designed to educate the public about disaster preparedness and train them to assist their neighbors. Expenditures include equipment and training to help citizens learn to respond to hazards as part of a team in their neighborhood or workplace, and public information. The program also includes the sheltering project which brings generators and shelters into the region to protect citizens who need shelter.	2,662,666	2,569,062	33,604	60,000
Regional Coordination Planning				
Includes regional emergency coordination planning, mutual aid improvements, public information and enhancements to critical infrastructure protection.	1,024,051	1,024,051	0	0
Exercises				
Two regional exercises occurred on August 9-10 2006 at Busch Stadium and Olivette. In addition, Community Emergency Response Teams (CERT) exercises were added in FY06.	446,500	371,500	0	75,000
Training				
Most disciplines have received and will continue to attend training activities to enhance their skills. Included are heavy rescue, hazmat, incident management teams, law enforcement, public health and hospitals.	3,695,608	3,541,548	40,000	114,060
Totals:	\$77,824,830	¹ \$75,522,738	\$272,104	\$2,029,988

¹ This total represents the sum of UASI funds awarded for equipment and contractual obligations for fiscal years 2003 - 2014. The schedule represents the cumulative amount spent, from both open and closed grants, on major projects since the inception of the Homeland Security Grant Program.