

# Threatened and Endangered Species

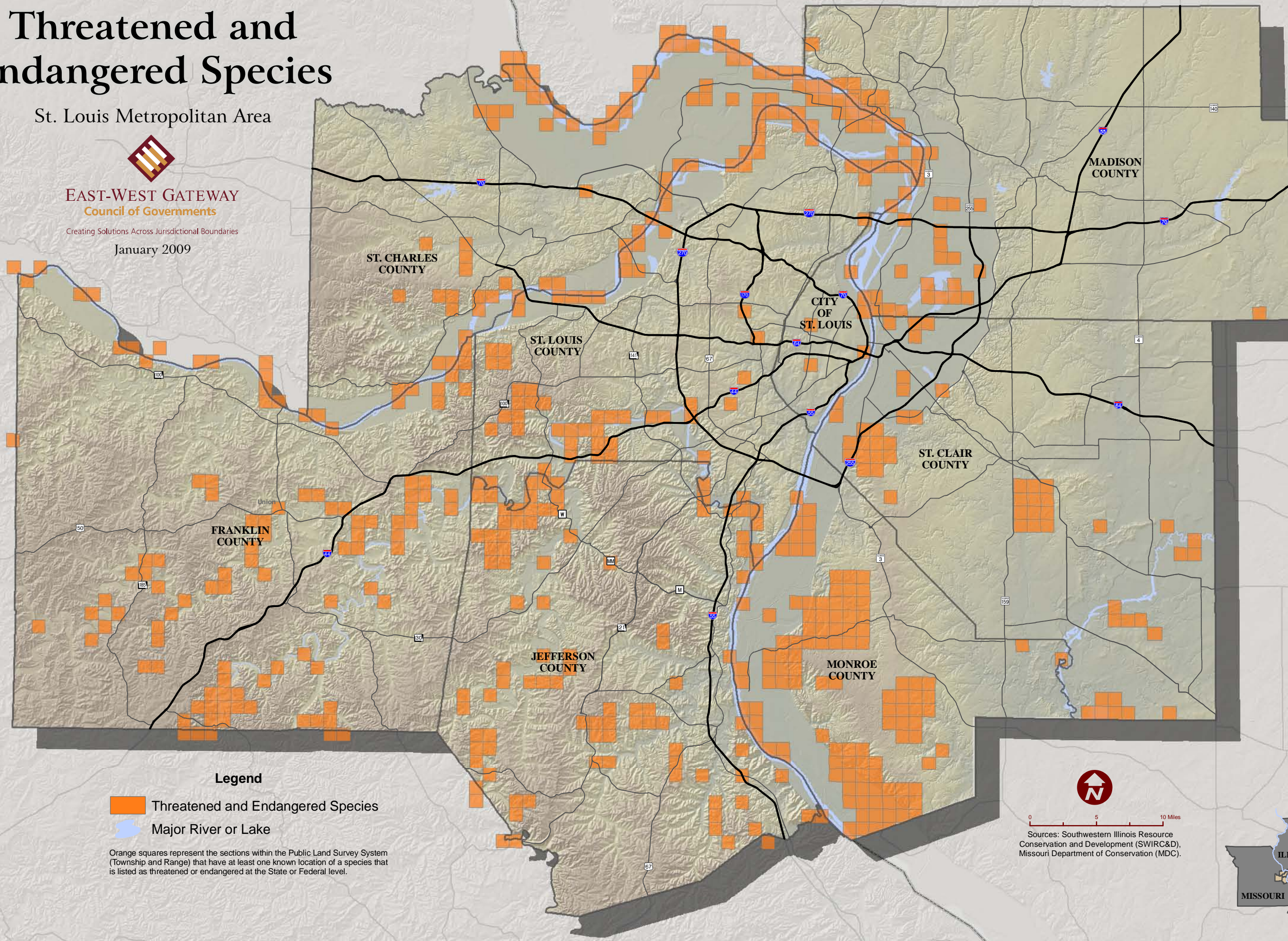
St. Louis Metropolitan Area





**EAST-WEST GATEWAY**  
Council of Governments

Creating Solutions Across Jurisdictional Boundaries

January 2009



## Legend

-  Threatened and Endangered Species
-  Major River or Lake

Orange squares represent the sections within the Public Land Survey System (Township and Range) that have at least one known location of a species that is listed as threatened or endangered at the State or Federal level.



0 5 10 Miles

Sources: Southwestern Illinois Resource Conservation and Development (SWIRC&D), Missouri Department of Conservation (MDC).

