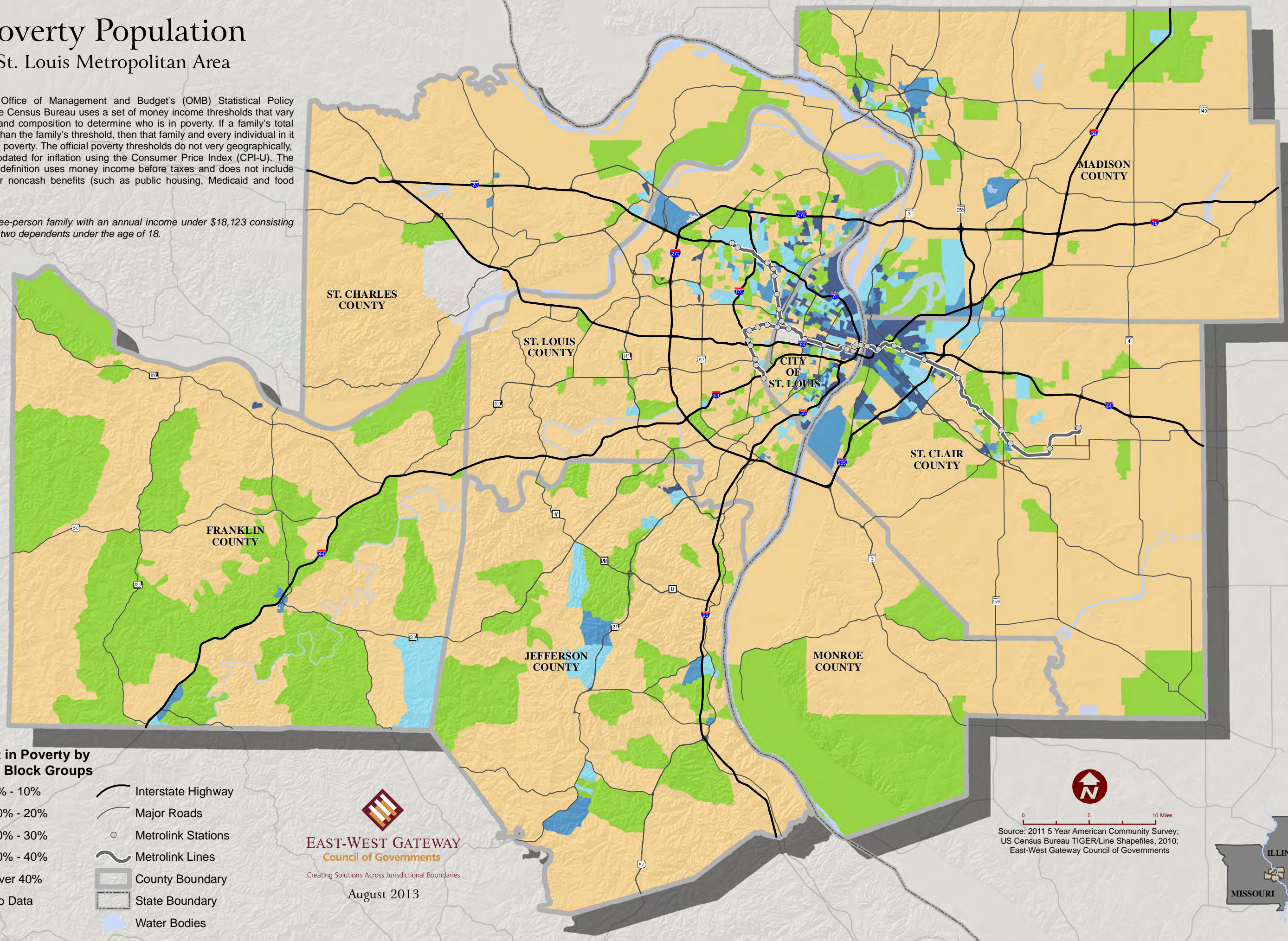


Poverty Population

St. Louis Metropolitan Area

Following the Office of Management and Budget's (OMB) Statistical Policy Directive 14, the Census Bureau uses a set of money income thresholds that vary by family size and composition to determine who is in poverty. If a family's total income is less than the family's threshold, then that family and every individual in it is considered in poverty. The official poverty thresholds do not vary geographically, but they are updated for inflation using the Consumer Price Index (CPI-U). The official poverty definition uses money income before taxes and does not include capital gains or noncash benefits (such as public housing, Medicaid and food stamps).

Example: A three-person family with an annual income under \$18,123 consisting of an adult and two dependents under the age of 18.



Percent in Poverty by Census Block Groups

- 0% - 10%
- 10% - 20%
- 20% - 30%
- 30% - 40%
- Over 40%
- No Data

- Interstate Highway
- Major Roads
- Metrolink Stations
- Metrolink Lines
- County Boundary
- State Boundary
- Water Bodies

EAST-WEST GATEWAY
Council of Governments

Creating Solutions Across Jurisdictional Boundaries

August 2013



0 5 10 Miles

Source: 2011 5 Year American Community Survey;
US Census Bureau TIGER/Line Shapefiles, 2010;
East-West Gateway Council of Governments

