

Annual Risk of Flooding

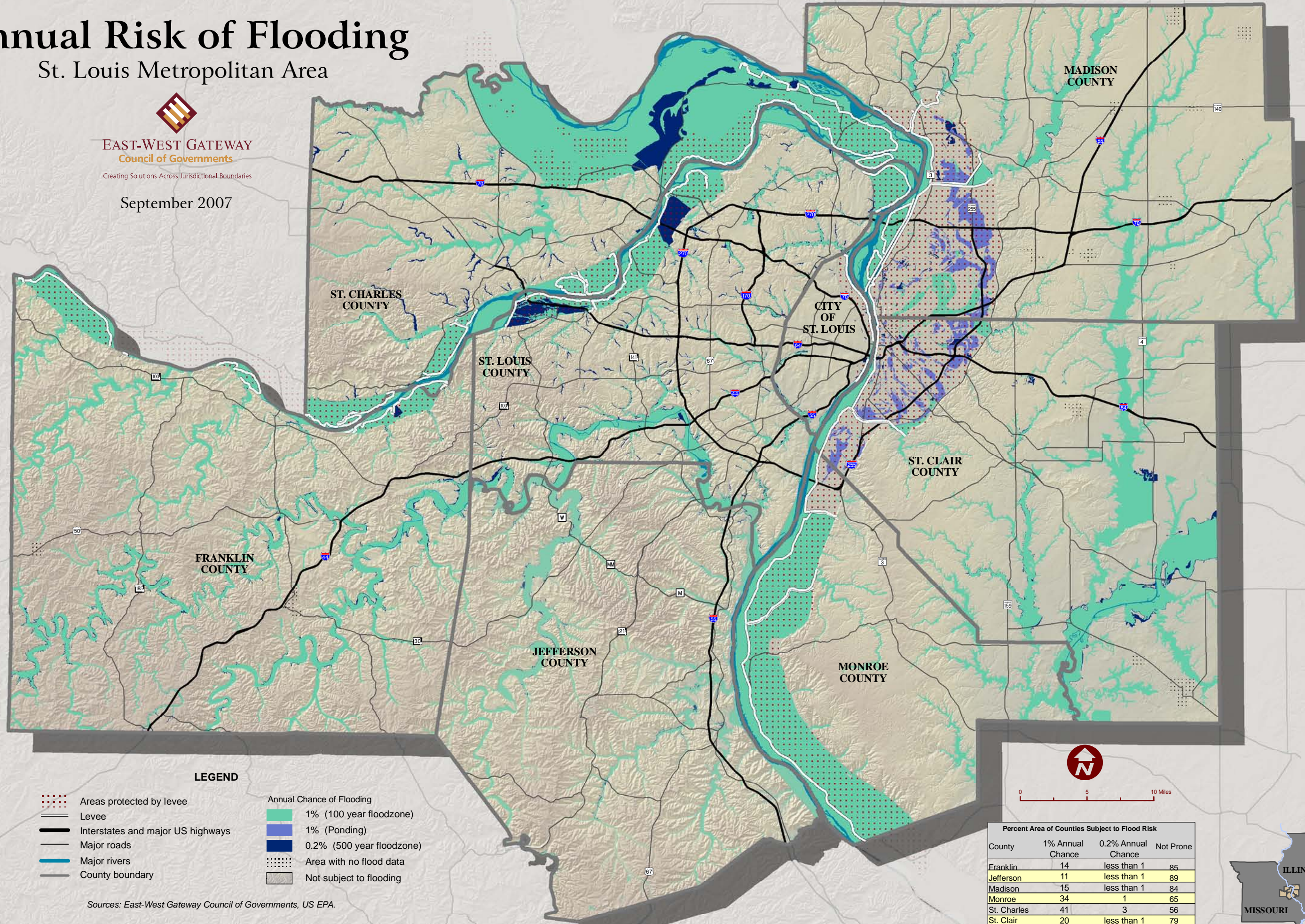
St. Louis Metropolitan Area



EAST-WEST GATEWAY
Council of Governments

Creating Solutions Across Jurisdictional Boundaries

September 2007

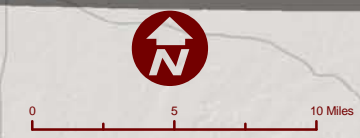


LEGEND

- Areas protected by levee
- Levee
- Interstates and major US highways
- Major roads
- Major rivers
- County boundary

- Annual Chance of Flooding
- 1% (100 year floodzone)
 - 1% (Ponding)
 - 0.2% (500 year floodzone)
 - Area with no flood data
 - Not subject to flooding

Sources: East-West Gateway Council of Governments, US EPA.



Percent Area of Counties Subject to Flood Risk			
County	1% Annual Chance	0.2% Annual Chance	Not Prone
Franklin	14	less than 1	85
Jefferson	11	less than 1	89
Madison	15	less than 1	84
Monroe	34	1	65
St. Charles	41	3	56
St. Clair	20	less than 1	79
St. Louis	19	4	78
St. Louis City	10	1	89

