



REGIONAL SUSTAINABILITY

www.onestl.org

Plan for a Prosperous, Healthy, Vibrant St. Louis Region

Aaron Young, AICP
Manager of Sustainability Planning
East-West Gateway
Council of Governments
aaron.young@ewgateway.org



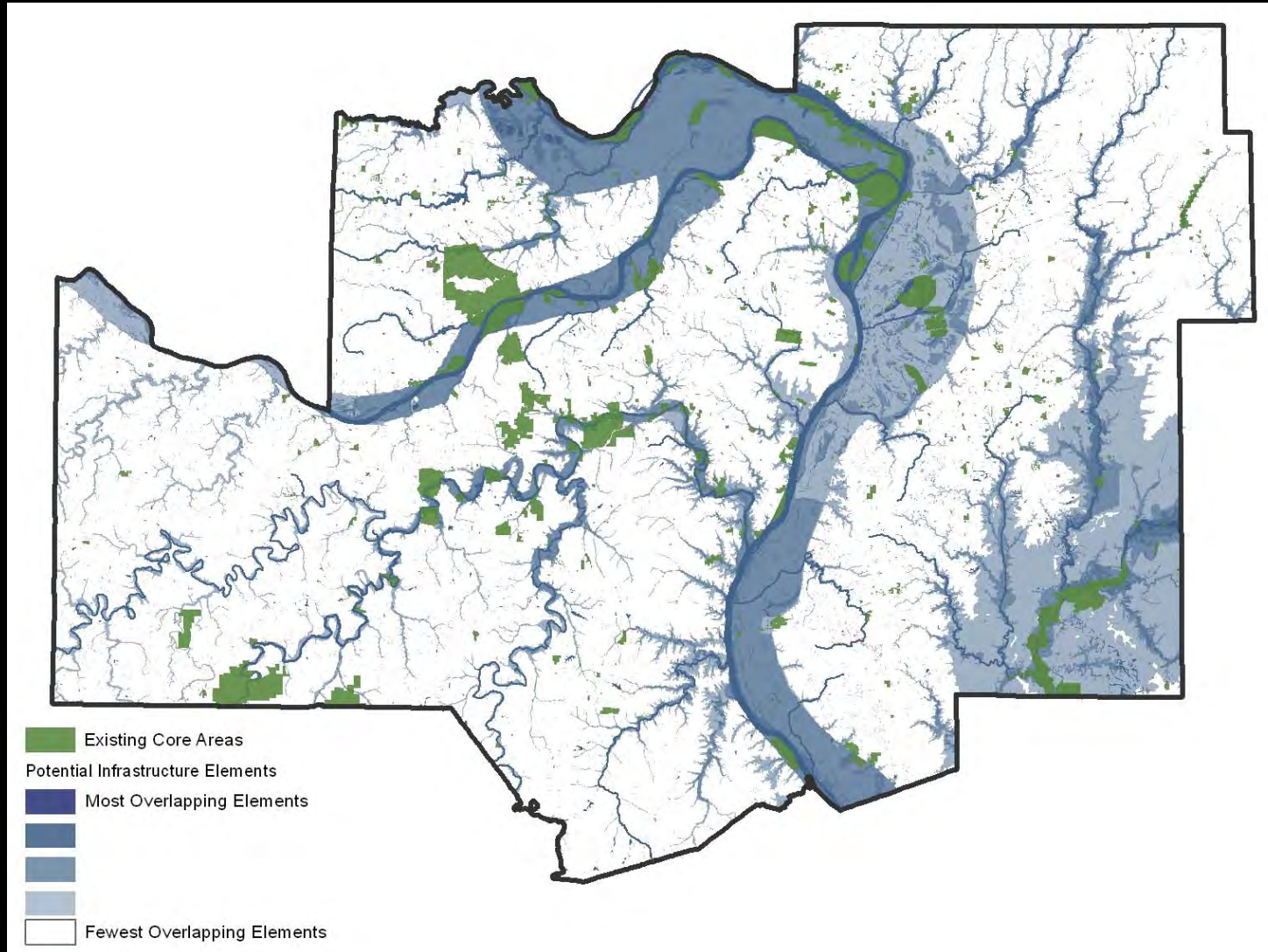
Plan for a Prosperous, Healthy, Vibrant St. Louis Region

BOARD APPROVED
DECEMBER 11, 2013

Blue – Gray – Green Infrastructure

- ❑ Blue infrastructure = the natural system of water ways and hydrologic cycle. *Also refers to engineering practices that mimic natural processes.*
- ❑ Gray Infrastructure = the built systems that convey water, humans, products, and by-products.
- ❑ Green Infrastructure = the nodes and corridors of vegetation. All of our natural resources. *Also refers to the site-scale installation of landscaping and other materials that recreate natural processes.*

Blue – Gray – Green Infrastructure



Blue – Gray – Green Infrastructure

- ❑ Identified as a “Regional Opportunity”
 - Huge role and impact of rivers.
 - Not defined by political boundaries.
 - Solutions rely on synergies and multi-functional approaches.
 - No current coordinated framework.

Blue – Gray – Green Infrastructure

- ❑ Identified as a “Regional Opportunity”
 - Huge role and impact of rivers.
 - Not defined by political boundaries.
 - Solutions rely on synergies and multi-functional approaches.
 - No current coordinated framework.
- ❑ Opportunity as a Regional Working Group
 - Reconcile separate planning initiatives.
 - Select priorities.
 - Contribute to plan updates.
 - Attract new funding.
 - Interacting with other OneSTL working groups.

Blue – Gray – Green Infrastructure

- ❑ Identified as a “Regional Opportunity”
 - Huge role and impact of rivers.
 - Not defined by political boundaries.
 - Solutions rely on synergies and multi-functional approaches.
 - No current coordinated framework.
- ❑ Opportunity as a Regional Working Group
 - Reconcile separate planning initiatives.
 - Select priorities.
 - Contribute to plan updates.
 - Attract new funding.
 - Interacting with other OneSTL working groups.
- ❑ Identified Issues to Resolve
 - Grasping the scale of BGG infrastructure.
 - Formalizing the scope of Working Group activities.
 - Identifying a focus.

Water & Green Infrastructure

Distinctive

Access to Open Space – Percent of population that reside within 1 mile of a park or open space for rural areas or ½ mile for urban areas

Green

Land Preservation – Net acres of agriculture and natural resource land lost to development per net new resident.

Rainscaping – Acres of land treated for stormwater overflow using water quality best management practices

Tree Canopy – Percent of Land with tree canopy

Watershed Plans – Number of watersheds with a plan or active organization

Water Quality – Percent of assessed streams and rivers that are impaired



REGIONAL SUSTAINABILITY



Home TV Schedule Watch

Water Matters



St. Louis Partners Bring Focus to Importance of Water

1/14 #WaterMattersSTL Interstitial - Water, Economy, and St. Louis



On-Line Home of East-West Gateway Council of Governments - St. Louis, Missouri

Environment --> Water Resources

Water Resources Committee

Green Infrastructure/Rainscaping

Meramec River Partnership



Metro Water Infrastructure Partnership



Sustainability Summit:
Setting Targets for our Shared Future
April 5, 2017

Eric P. Newman Education Center


www.onestl.org



REGIONAL SUSTAINABILITY

uswateralliance.org


US Water Alliance About Us One Water Hub Initiatives



**One Water,
One Future.**

Upper Mississippi River Basin Association

Home About UMRBA River Facts Meetings Publications



The Upper Mississippi River Basin Association (UMRBA) is a regional interstate organization formed by the Governors of Illinois, Iowa, Minnesota, Missouri, and Wisconsin to coordinate the states' river-related programs and policies and work with federal agencies that have river responsibilities. UMRBA is involved with programs related to commercial navigation, ecosystem restoration, water quality, aquatic nuisance species, hazardous spills, flood risk management, water supply, and other water resource issues.

What's New

- UMRBA Letter to Congress re Reconciliation of 2016 Water Resources Development Act (11-14-16) [PDF](#)
- Updated Upper Mississippi River Economic Profile [PDF](#)
- Upper Mississippi River Harmful Algal Bloom Response Resource Manual [PDF](#)



missouri.org

Mississippi rivers and towns initiative

HOME ABOUT CONTACT US EVENTS POLICY NEWS CONGRESSIONAL CAUCUS

CONGRESSIONAL CAUCUS NEWS LINK POLICY LINK

MISSISSIPPI RIVER MAYORS ANNOUNCE RECOMMENDATION TO FEMA

ON DISASTER MITIGATION, CLEAN WATER ALLIANCE WITH WALMART STORES, AND A WIDENING SUSTAINABLE ECONOMY PARTNERSHIP WITH U.S. DOT



Blue – Gray – Green Infrastructure

□ Potential Stakeholders:

- Great Rivers Greenway Dist.
- Metro East Parks & Rec
- Heartlands Conservancy
- MSD & other sewer districts
- MO Botanical Gardens
- Area Counties
- City of St. Louis
- Area Levee Districts
- MDNR, MDC, IEPA, IDNR
- Water Infrastructure Partnership
- Municipalities
- The Nature Conservancy
- Sierra Club
- Trailnet
- Deer Creek Watershed Alliance
- Missouri Coalition for the Environment

OneSTL – Regional Collaborations

☐ **Community Development**

- Community Builders' Network
- St. Louis Community Foundation
- Federal Partnerships
- Invest STL

☐ **Food Access**

- Missouri Foundation for Health
- University Extensions
- St. Clair County Health Dept.
- East Side Health District
- SIUE
- United Way
- St. Louis Food Policy Coalition

☐ **Energy**

- USGBC
- Chamber's – Environment and Energy Committee
- Earthway's Center
- Madison County
- Utilities

☐ **Blue-Gray-Green Infrastructure**

- Botanical Garden
- Heartlands Conservancy
- Urban Vitality & Ecology
- Our Missouri Waters
- Great Rivers Greenway



OneSTL – Role in Regional Collaboration

- ❑ Define regional context.
 - Network/asset mapping

OneSTL – Role in Regional Collaboration

- ❑ Define regional context.
 - Network/asset mapping
- ❑ Neutral convener.
 - Bridge sector and jurisdictional gaps.
 - Exchange information and expertise.
 - Find and connect common efforts.

OneSTL – Role in Regional Collaboration

- ❑ Define regional context.
 - Network/asset mapping
- ❑ Neutral convener.
 - Bridge sector and jurisdictional gaps.
 - Exchange information and expertise.
 - Find and connect common efforts.
- ❑ Help attract new funding.
 - Partner on grants.
 - Avoid competition.

OneSTL – Role in Regional Collaboration

- ❑ Define regional context.
 - Network/asset mapping
- ❑ Neutral convener.
 - Bridge sector and jurisdictional gaps.
 - Exchange information and expertise.
 - Find and connect common efforts.
- ❑ Help attract new funding.
 - Partner on grants.
 - Avoid competition.
- ❑ Document Collaboration.
 - Through network mapping.
 - On-line communications platform.
 - Goal/Objective/Strategy summaries.