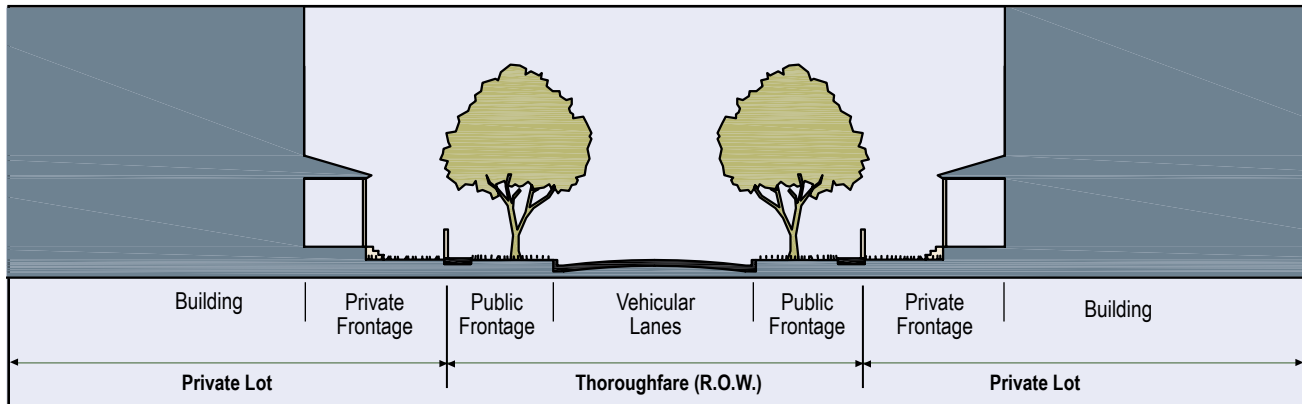
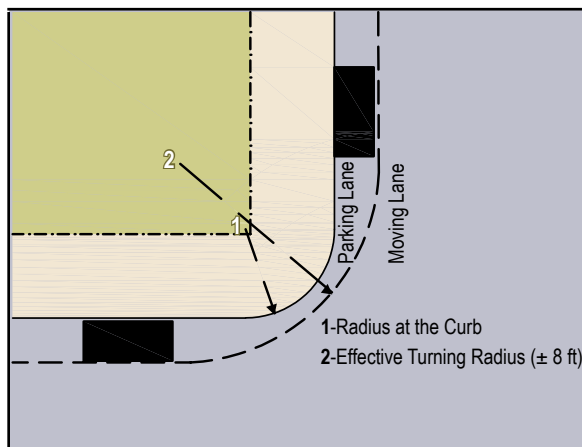


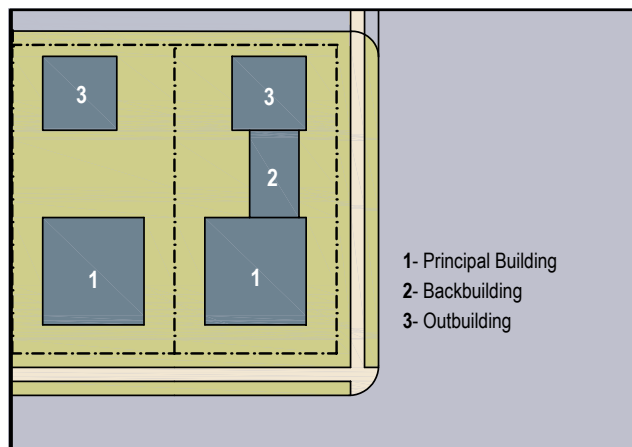
a. THOROUGHFARE & FRONTAGES



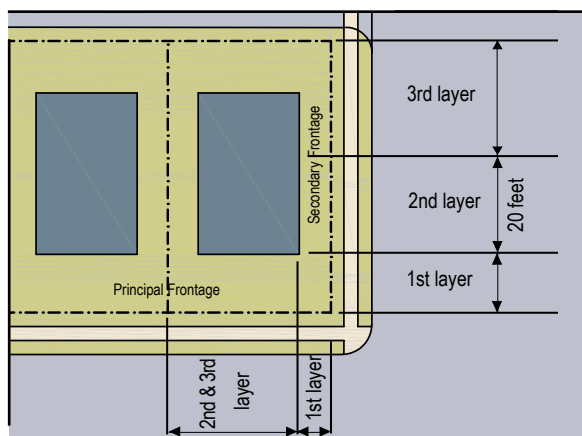
b. TURNING RADIUS



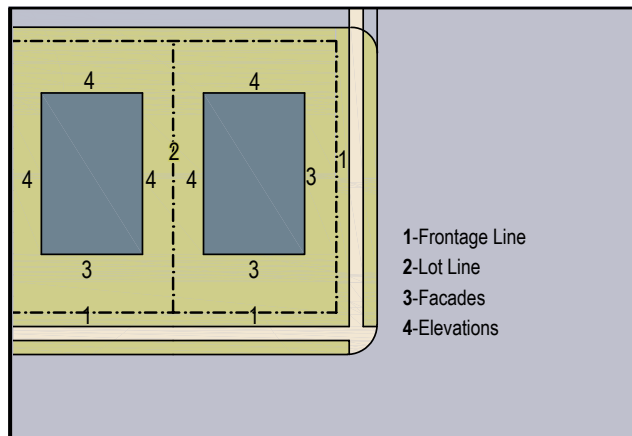
c. BUILDING DISPOSITION



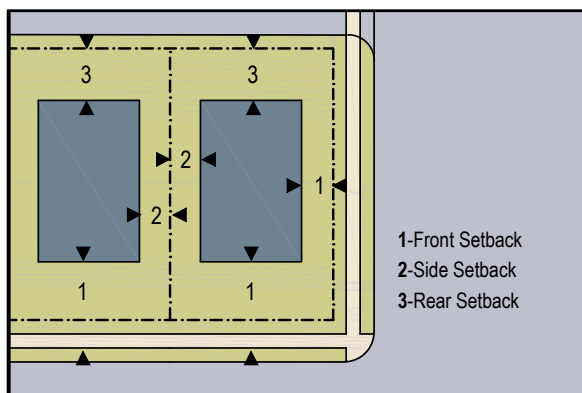
d. LOT LAYERS



e. FRONTAGE & LOT LINES



f. SETBACK DESIGNATIONS



ARTICLE 9. APPENDIX MATERIALS

Missouri Native Plant List provided by the Missouri Botanical Garden PlantFinder <http://www.mobot.org/gardeninghelp/plantfinder>

Scientific Name	Common Name	Height (ft.)	Zone
<i>Acer negundo</i>	box elder	30-50	2-10
<i>Acer rubrum</i>	red maple	40-70	3-9
<i>Acer saccharinum</i>	silver maple	50-80	3-9
<i>Acer saccharum</i>	sugar maple	40-80	3-8
<i>Acer saccharum</i> subsp. <i>nigrum</i>	black maple	60-75	4-8
<i>Achillea millefolium</i>	yarrow	2-3	3-9
<i>Actaea pachypoda</i>	white baneberry	1.5-2.5	3-8
<i>Actaea racemosa</i>	black cohosh	4-6	3-8
<i>Adiantum capillus-veneris</i>	maidenhair fern	0.75-1.5	5-8
<i>Adiantum pedatum</i>	American maidenhair fern	1-2.5	3-8
<i>Aesculus glabra</i>	Ohio buckeye	20-40	3-7
<i>Aesculus pavia</i>	red buckeye	12-15	4-8
<i>Agalinis tenuifolia</i>	agalinis	1-2	-
<i>Agastache nepetoides</i>	yellow giant hyssop	4-6	2-8
<i>Alisma plantago-aquatica</i> var. <i>americanum</i>	northern water plantain	2-3	5-10
<i>Allium cernuum</i>	nodding onion	1-1.5	4-8
<i>Allium stellatum</i>	prairie onion	1-1.5	3-8
<i>Amelanchier arborea</i>	serviceberry	15-25	4-9
<i>Amorpha canescens</i>	lead plant	2-3	2-9
<i>Amsonia ciliata</i>	blue star	2-3	5-9
<i>Amsonia illustris</i>	shining blue star	2-3	5-9
<i>Amsonia tabernaemontana</i>	blue star	2-3	3-9
<i>Amsonia tabernaemontana</i> var. <i>salicifolia</i>	blue star	2-3	3-9
<i>Andropogon gerardii</i>	big blue stem	4-6	4-9
<i>Anemone canadensis</i>	windflower	1-2	3-9
<i>Anemone virginiana</i>	thimbleweed	1-2	2-8
<i>Anemonella thalictroides</i>	rue-anemone	0.5-0.75	4-8
<i>Antennaria plantaginifolia</i>	pussytoes	0.5-1	3-8
<i>Apocynum cannabinum</i>	Indian hemp	2-4	4-9
<i>Aquilegia canadensis</i>	columbine	2-3	3-8
<i>Aralia racemosa</i>	American spikenard	3-5	3-8
<i>Aralia spinosa</i>	Devil's walking stick	10-20	4-9
<i>Arisaema dracontium</i>	dragon root	1-3	4-9
<i>Arisaema triphyllum</i>	jack-in-the-pulpit	1-2	4-9
<i>Aristolochia tomentosa</i>	Dutchman's pipe	20-30	5-8
<i>Aronia melanocarpa</i>	black chokeberry	3-6	3-8
<i>Aruncus dioicus</i>	goat's beard	4-6	4-8
<i>Arundinaria gigantea</i>	giant cane	5-12	5-9
<i>Asarum canadense</i>	wild ginger	0.5-1	4-6
<i>Asclepias incarnata</i>	swamp milkweed	4-5	3-6
<i>Asclepias purpurascens</i>	purple milkweed	2-3	3-8
<i>Asclepias sullivantii</i>	prairie milkweed	2-3	3-7
<i>Asclepias tuberosa</i>	butterfly weed	1-2.5	3-9
<i>Asimina triloba</i>	pawpaw	15-30	5-9
<i>Asplenium x ebenoides</i>	walking spleenwort	0.75-1	4-8
<i>Asplenium platyneuron</i>	ebony spleenwort	0.5-1	3-8
<i>Aster cordifolius</i>	aster	2-5	3-8
<i>Aster ericoides</i>	heath aster	1-3	3-10
<i>Aster furcatus</i>	forked aster	1-3	4-8
<i>Aster laevis</i>	smooth aster	2-4	3-8
<i>Aster linariifolius</i>	stiff aster	1-2	4-9

TABLE 11: NATIVE PLANT LIST

Manchester Road Form-Based Code

Scientific Name	Common Name	Height (ft.)	Zone
<i>Aster macrophyllus</i>	large-leave aster	2-4	3-8
<i>Aster novae-angliae</i>	New England aster	3-6	4-8
<i>Aster oblongifolius</i>	aromatic aster	1-3	3-8
<i>Aster patens</i>	spreading aster	2-3	4-8
<i>Aster puniceus</i>	glossy-leaved aster	6-8	2-9
<i>Athyrium filix-femina</i>	lady fern	1-3	4-8
<i>Athyrium pycnocarpon</i>	glade fern	2-3	3-8
<i>Athyrium thelypteroides</i>	lady fern	2-3	4-8
<i>Baptisia alba</i>	false indigo	2-4	5-8
<i>Baptisia alba var. macrophylla</i>	white false indigo	2-4	3-9
<i>Baptisia australis</i>	blue false indigo	3-4	3-9
<i>Baptisia australis var. minor</i>	blue false indigo	1.5-2	3-8
<i>Baptisia bracteata</i>	false indigo	2-2.5	3-9
<i>Baptisia sphaerocarpa</i>	yellow wild indigo	2-3	5-8
<i>Betula nigra</i>	river birch	40-70	4-9
<i>Bignonia capreolata</i>	cross vine	35-50	5-9
<i>Blephilia ciliata</i>	Ohio horsemint	1-2.5	4-8
<i>Blephilia hirsuta</i>	hairy woodmint	1-2.5	4-8
<i>Boltonia asteroides</i>	false aster	5-6	3-10
<i>Boltonia decurrens</i>	decurrent false aster	4-6	4-8
<i>Bouteloua curtipendula</i>	sideoats grass	1.5-2.5	4-9
<i>Bouteloua gracilis</i>	blue grama	0.75-2	3-10
<i>Cabomba caroliniana</i>	fanwort	-0.25	6-10
<i>Cacalia atriplicifolia</i>	pale Indian plantain	3-6	3-8
<i>Cacalia muehlenbergii</i>	great Indian plantain	3-9	3-8
<i>Calamintha arkansana</i>	calamint	0.5-1	4-8
<i>Callicarpa americana</i>	beautyberry	3-6	6-10
<i>Callirhoe bushii</i>	poppy mallow	1-1.5	5-8
<i>Callirhoe digitata</i>	fringed poppy mallow	2-4	5-8
<i>Callirhoe involucreta</i>	purple poppy mallow	0.5-1	4-8
<i>Callirhoe triangulata</i>	clustered poppy mallow	1-3	5-8
<i>Caltha palustris</i>	marsh marigold	1-1.5	3-7
<i>Calylophus serrulatus</i>	shrubby evening primrose	0.5-1.5	3-8
<i>Campsis radicans</i>	trumpet creeper	25-40	4-9
<i>Cardamine concatenata</i>	cutleaf toothwort	0.5-0.75	3-8
<i>Carex alata</i>	broadwing sedge	2-3	4-8
<i>Carex bicknellii</i>	prairie sedge	1.5-3	3-7
<i>Carex bushii</i>	Bush's sedge	1-3	5-8
<i>Carex cherokeensis</i>	sedge	0.5-1	6-9
<i>Carex davisii</i>	Davis's sedge	2.5-3	4-7
<i>Carex eburnea</i>	bristle-leaved sedge	0.5-1	2-8
<i>Carex flaccosperma</i>	blue wood sedge	0.5-1	5-8
<i>Carex frankii</i>	Frank's sedge	1-2	5-8
<i>Carex grayi</i>	gray sedge	2-3	5-9
<i>Carex haydenii</i>	Hayden's sedge	1-1.5	3-8
<i>Carex lurida</i>	sallow sedge	1.5-3	3-8
<i>Carex muskingumensis</i>	palm sedge	2-3	4-9
<i>Carex squarrosa</i>	squarrose sedge	1.5-2	4-6
<i>Carex stricta</i>	tussock sedge	1-3	3-8
<i>Carex vulpinoidea</i>	fox sedge	1-3	3-7
<i>Carpinus caroliniana</i>	American hornbeam	20-35	3-9
<i>Carya cordiformis</i>	bitternut hickory	50-80	4-9
<i>Carya glabra</i>	pignut	50-80	4-9
<i>Carya illinoensis</i>	hardy pecan	75-100	5-9
<i>Carya laciniata</i>	shellbark hickory	60-80	5-8
<i>Carya ovata</i>	shagbark hickory	70-90	4-8
<i>Carya tomentosa</i>	mockernut	60-80	4-9
<i>Castanea ozarkensis</i>	Ozark chinquapin	40-60	5-8
<i>Castilleja coccinea</i>	Indian paintbrush	0.75-1.5	4-8
<i>Catalpa speciosa</i>	catalpa	40-70	4-8
<i>Caulophyllum thalictroides</i>	blue cohosh	1-2	3-8
<i>Ceanothus americanus</i>	New Jersey tea	3-4	4-8
<i>Celastrus scandens</i>	American bittersweet	15-20	3-8
<i>Celtis laevigata</i>	sugarberry	60-80	6-9
<i>Celtis occidentalis</i>	hackberry	40-60	2-9
<i>Cephalanthus occidentalis</i>	buttonbush	5-12	5-9
<i>Cercis canadensis</i>	eastern redbud	20-30	4-8
<i>Cercis canadensis f. alba</i>	eastern redbud	20-30	4-9
<i>Chasmanthium latifolium</i>	northern sea oats	2-5	3-8
<i>Chelone glabra</i>	turtlehead	2-3	3-8

Scientific Name	Common Name	Height (ft.)	Zone
<i>Chelone obliqua</i>	shellflower	2-3	3-9
<i>Chionanthus virginicus</i>	fringe tree	12-20	3-9
<i>Cladrastis kentukea</i>	yellowwood	30-50	4-8
<i>Claytonia virginica</i>	spring beauty	0.5-0.75	3-8
<i>Clematis crispa</i>	blue jasmine	6-10	6-9
<i>Clematis fremontii</i>	Fremont's leather flower	1-1.5	4-7
<i>Clematis virginiana</i>	woodbine	12-20	3-8
<i>Cocculus carolinus</i>	Carolina moonseed	10-14	5-9
<i>Collinsia verna</i>	blue-eyed Mary	1-2	-
<i>Collinsonia canadensis</i>	horse balm	2-4	4-8
<i>Conoclinium coelestinum</i>	blue mistflower	1.5-3	5-10
<i>Coreopsis lanceolata</i>	tickseed	1-2	4-9
<i>Coreopsis palmata</i>	tickseed	1.5-2.5	3-8
<i>Coreopsis tinctoria</i>	plains coreopsis	2-4	-
<i>Coreopsis tripteris</i>	tickseed	2-8	3-8
<i>Cornus amomum</i>	dogwood	6-10	5-8
<i>Cornus asperifolia</i> var. <i>drummondii</i>	roughleaf dogwood	6-15	5-8
<i>Cornus florida</i>	flowering dogwood	15-30	5-9
<i>Cornus florida</i> f. <i>rubra</i>	flowering dogwood	15-30	5-9
<i>Cornus racemosa</i>	gray dogwood	10-15	4-8
<i>Corylus americana</i>	American hazelnut	10-16	4-9
<i>Cotinus obovatus</i>	American smoke tree	20-30	4-8
<i>Crataegus crus-galli</i>	cockspur thorn	25-35	3-7
<i>Crataegus phaenopyrum</i>	Washington thorn	25-30	3-8
<i>Crataegus viridis</i>	green hawthorn	20-35	4-8
<i>Cunila origanoides</i>	American dittany	0.75-1.5	5-8
<i>Cystopteris protrusa</i>	lowland fragile fern	0.5-1.5	2-9
<i>Dalea candida</i>	white prairie clover	1-2	3-8
<i>Dalea purpurea</i>	purple prairie clover	1-3	3-8
<i>Delphinium exaltatum</i>	tall larkspur	4-6	5-7
<i>Delphinium treleasei</i>	Trelease's larkspur	2-4	5-7
<i>Dennstaedtia punctilobula</i>	hay-scented fern	1.5-2	3-8
<i>Desmanthus illinoensis</i>	prairie bundleflower	2-3	5-8
<i>Desmodium illinoense</i>	tick-trefoil	2-5	4-8
<i>Diarrhena americana</i>	American beakgrain	2-3	4-8
<i>Diarrhena obovata</i>	American beakgrain	2-3	4-8
<i>Dicentra cucullaria</i>	Dutchman's breeches	0.5-1	3-7
<i>Dicentra spectabilis</i> 'Alba'	bleeding heart	2-2.5	3-9
<i>Diospyros virginiana</i>	persimmon	35-60	4-9
<i>Dirca palustris</i>	leatherwood	4-6	3-9
<i>Dodecatheon meadia</i>	shooting star	0.75-1.5	4-8
<i>Dracopis amplexicaulis</i>	clasping coneflower	1.5-2	-
<i>Dryopteris carthusiana</i>	wood fern	2-3	3-8
<i>Dryopteris celsa</i>	log fern	3-4	5-9
<i>Dryopteris goldieana</i>	goldie's shield fern	3-4	3-7
<i>Dryopteris marginalis</i>	marginal wood fern	1.5-2	3-8
<i>Echinacea angustifolia</i>	narrow-leaf coneflower	1-2	3-8
<i>Echinacea pallida</i>	pale purple coneflower	2-3	3-10
<i>Echinacea paradoxa</i>	yellow coneflower	2-3	5-8
<i>Echinacea purpurea</i>	purple coneflower	2-5	3-8
<i>Echinacea simulata</i>	pale purple coneflower	2-3	5-8
<i>Elephantopus carolinianus</i>	elephant's foot	2-3	4-9
<i>Elodea canadensis</i>	Canadian pondweed	-	4-10
<i>Elymus canadensis</i>	Canada wild rye	2-5	3-8
<i>Elymus hystrix</i>	bottlebrush grass	2.5-3	5-9
<i>Equisetum hyemale</i>	winter scouring rush	2-4	4-9
<i>Eragrostis spectabilis</i>	purple lovegrass	1-2	5-9
<i>Eragrostis trichodes</i>	sand lovegrass	2-4	5-9
<i>Erianthus alopecuroides</i>	silver plume grass	3-10	6-10
<i>Erigeron philadelphicus</i>	common fleabane	2-2.5	2-7
<i>Eryngium yuccifolium</i>	rattlesnake master	4-5	3-8
<i>Erysimum capitatum</i>	coastal wallflower	1-2	3-7
<i>Erythronium albidum</i>	white dog's-tooth violet	0.5-1	3-8
<i>Erythronium americanum</i>	yellow adder's tongue	0.25-0.5	3-8
<i>Euonymus atropurpureus</i>	wahoo	12-20	3-7
<i>Eupatorium fistulosum</i>	Joe Pye weed	4-7	4-8
<i>Eupatorium perfoliatum</i>	American boneset	4-6	3-8
<i>Eupatorium purpureum</i>	Joe Pye weed	5-7	4-9
<i>Eupatorium rugosum</i>	white snakeroot	3-5	3-8
<i>Evolvulus nuttallianus</i>	evolvulus	1-1.5	4-10
<i>Fagus grandifolia</i>	American beech	50-80	3-9
<i>Filipendula rubra</i>	queen of the prairie	6-8	3-8
<i>Fothergilla major</i>	witch-alder	6-10	4-8
<i>Fragaria vesca</i>	wild strawberry	0.25-0.75	5-9

TABLE 11: NATIVE PLANT LIST

Scientific Name	Common Name	Height (ft.)	Zone
<i>Fraxinus americana</i>	white ash	60-80	3-9
<i>Fraxinus pennsylvanica</i>	green ash	50-70	3-9
<i>Fraxinus profunda</i>	pumpkin ash	60-80	5-9
<i>Fraxinus quadrangulata</i>	blue ash	50-75	4-7
<i>Gaillardia aestivalis</i>	lance leaf blanket flower	1-1.5	5-9
<i>Galium boreale</i>	northern bedstraw	1-3	4-8
<i>Gentiana andrewsii</i>	closed gentian	1-2	3-7
<i>Geranium maculatum</i>	wild geranium	1.5-2	3-8
<i>Gleditsia triacanthos</i>	honey locust	60-80	3-8
<i>Grindelia lanceolata</i>	gum plant	2-3	4-8
<i>Gymnocladus dioica</i>	Kentucky coffee tree	60-80	3-8
<i>Hamamelis vernalis</i>	Ozark witch hazel	6-10	4-8
<i>Hamamelis virginiana</i>	common witch hazel	15-20	3-8
<i>Helenium autumnale</i>	sneezeweed	3-5	3-8
<i>Helenium flexuosum</i>	purple-headed sneezeweed	1-3	5-9
<i>Helenium virginicum</i>	sneezeweed	2-4	5-8
<i>Helianthus annuus</i>	sunflower	3-10	-
<i>Helianthus divaricatus</i>	sunflower	2-6	3-8
<i>Helianthus maximiliani</i>	Maximilian sunflower	3-10	4-9
<i>Helianthus occidentalis</i>	sunflower	2-4	4-8
<i>Helianthus salicifolius</i>	willow-leaved sunflower	5-8	4-9
<i>Helianthus silphoides</i>	rosinweed sunflower	3-10	5-9
<i>Heliopsis helianthoides</i>	oxeye sunflower	3-6	3-9
<i>Heterotheca camporum</i>	golden aster	1-3	4-8
<i>Heuchera americana</i>	coral bells	1-2	4-9
<i>Heuchera richardsonii</i>	alum root	1-2	3-9
<i>Hibiscus laevis</i>	rose mallow	4-6	4-9
<i>Hibiscus lasiocarpus</i>	rose mallow	3-7	5-9
<i>Hydrangea arborescens</i>	smooth hydrangea	3-5	3-9
<i>Hydrastis canadensis</i>	golden seal	0.75-1	3-8
<i>Hymenocallis caroliniana</i>	spider lily	1.5-2	5-8
<i>Hypericum prolificum</i>	shrubby St. John's wort	1-5	3-8
<i>Hypericum pyramidatum</i>	great St. John's wort	2-5	4-8
<i>Ilex decidua</i>	possumhaw	7-15	5-9
<i>Ilex opaca</i>	American holly	15-30	5-9
<i>Ilex verticillata</i>	winterberry	3-12	3-9
<i>Impatiens capensis</i>	impatiens	2-5	-
<i>Iodanthus pinnatifidus</i>	purple rocket	1-3	4-8
<i>Iris brevicaulis</i>	zigzag iris	0.75-1	4-8
<i>Iris cristata</i>	dwarf crested iris	0.5-0.75	3-9
<i>Iris fulva</i>	copper iris	2-3	5-9
<i>Iris virginica</i>	southern blue flag	1-3	5-9
<i>Iris virginica var. shrevei</i>	southern blue flag	1.5-2	5-9
<i>Isopyrum biternatum</i>	false rue anemone	0.5-0.75	3-8
<i>Itea virginica</i>	Virginia sweetspire	3-5	5-9
<i>Juglans cinerea</i>	butter nut	40-60	3-7
<i>Juglans nigra</i>	black walnut	75-100	4-9
<i>Juncus effusus</i>	common rush	2-4	4-9
<i>Juncus tenuis</i>	rush	0.5-2	2-9
<i>Juniperus virginiana</i>	red cedar	30-65	2-9
<i>Koeleria macrantha</i>	Prairie junegrass	1-2	3-9
<i>Leitneria floridana</i>	corkwood	6-20	5-9
<i>Lemna minor</i>	common duckweed	-0.25	4-10
<i>Lespedeza capitata</i>	bush clover	2-4	4-8
<i>Liatris aspera</i>	blazing star	2-3	3-8
<i>Liatris cylindracea</i>	blazing star	1.5-2	4-7
<i>Liatris ligulistylis</i>	blazing star	1-3	3-8
<i>Liatris pycnostachya</i>	prairie blazing star	2-5	3-9
<i>Liatris scariosa</i>	blazing star	2-4	3-8
<i>Liatris spicata</i>	blazing star	2-4	3-8
<i>Lilium michiganense</i>	Michigan lily	2-5	4-8
<i>Lindera benzoin</i>	spice bush	6-12	4-9
<i>Liquidambar styraciflua</i>	sweet gum	60-80	5-9
<i>Liriodendron tulipifera</i>	tulip tree	60-90	4-9
<i>Lobelia cardinalis</i>	cardinal flower	2-4	3-9
<i>Lobelia siphilitica</i>	blue cardinal flower	2-3	4-9
<i>Lonicera flava</i>	honeysuckle	10-20	5-8
<i>Lonicera sempervirens</i>	trumpet honeysuckle	10-20	4-9
<i>Ludwigia alternifolia</i>	seed box	2-3	4-8
<i>Maclura pomifera</i>	osage orange	35-60	4-9
<i>Magnolia acuminata</i>	cucumber tree	40-70	3-8
<i>Maianthemum racemosum</i>	false spikenard	2-3	3-8
<i>Manfreda virginica</i>	false aloe	3-6	6-9
<i>Marshallia caespitosa</i>	Barbara's buttons	1-1.5	5-8

Scientific Name	Common Name	Height (ft.)	Zone
<i>Matelea decipiens</i>	climbing milkweed	6-10	6-8
<i>Matteuccia struthiopteris</i>	ostrich fern	3-6	3-7
<i>Medeola virginiana</i>	Indian cucumber root	1-2	3-8
<i>Menyanthes trifoliata</i>	bog bean	0.75-1	3-10
<i>Mertensia virginica</i>	Virginia bluebells	1.5-2	3-8
<i>Mimulus ringens</i>	Allegheny monkey flower	1-3	3-8
<i>Mitchella repens</i>	partridge berry	0-0.25	3-8
<i>Monarda bradburyana</i>	eastern beebalm	1-2	5-8
<i>Monarda citriodora</i>	lemon mint	1-2.5	-
<i>Monarda fistulosa</i>	wild bergamot	2-4	3-9
<i>Monarda punctata</i>	dotted beebalm	1.5-2	3-8
<i>Morus rubra</i>	red mulberry	35-50	4-8
<i>Muhlenbergia capillaris</i>	pink muhlygrass	2-3	5-9
<i>Nelumbo lutea</i>	American lotus	3-6	4-10
<i>Neviusia alabamensis</i>	Alabama snow wreath	3-6	5-8
<i>Nuphar lutea</i>	yellow pond lily	0.5-2	4-10
<i>Nyssa aquatica</i>	tupelo gum	50-80	6-9
<i>Nyssa sylvatica</i>	black gum	30-50	3-9
<i>Oenothera macrocarpa</i>	Missouri evening primrose	0.75-1	3-7
<i>Oenothera pilosella</i>	evening primrose	1-2	3-8
<i>Oenothera speciosa</i>	white evening primrose	0.75-2	4-9
<i>Onoclea sensibilis</i>	sensitive fern	3-4	4-8
<i>Onosmodium molle</i>	false gromwell	2-3	3-8
<i>Onosmodium molle</i> subsp. <i>occidentale</i>	false gromwell	2-3	3-8
<i>Opuntia compressa</i>	prickly pear	0.5-1	4-9
<i>Opuntia macrorhiza</i>	prickly pear	0.5-1	3-9
<i>Osmunda cinnamomea</i>	cinnamon fern	2-3	3-9
<i>Osmunda claytoniana</i>	interrupted fern	2-3	3-8
<i>Osmunda regalis</i>	royal fern	2-3	3-9
<i>Osmunda regalis</i> var. <i>spectabilis</i>	royal fern	2-3	3-9
<i>Ostrya virginiana</i>	eastern hop hornbeam	25-40	3-9
<i>Oxalis violacea</i>	violet wood sorrel	0.5-0.75	5-9
<i>Packera aurea</i>	golden ragwort	0.5-2.5	3-8
<i>Panax quinquefolius</i>	American ginseng	0.75-1.5	4-8
<i>Panicum virgatum</i>	switch grass	3-6	5-9
<i>Parthenium integrifolium</i>	wild quinine	2-4	4-8
<i>Parthenocissus quinquefolia</i>	Virginia creeper	30-50	3-9
<i>Paspalum floridanum</i>	Florida paspalum	3-5	5-9
<i>Passiflora incarnata</i>	wild passion flower	6-8	5-9
<i>Pedicularis canadensis</i>	common lousewort	1-1.5	4-8
<i>Penstemon cobaea</i>	dew flower	1-2	5-8
<i>Penstemon cobaea</i> var. <i>purpureus</i>	dew flower	1-3	5-8
<i>Penstemon digitalis</i>	beard tongue	3-5	3-8
<i>Penstemon grandiflorus</i>	large beard tongue	2-4	3-9
<i>Penstemon tubaeformis</i>	beard tongue	1-3	4-8
<i>Phegopteris hexagonoptera</i>	broad beech fern	1.5-2	5-9
<i>Phlox bifida</i>	sand phlox	0.25-0.5	4-8
<i>Phlox divaricata</i>	wild sweet William	0.75-1	3-8
<i>Phlox divaricata</i> subsp. <i>laphamii</i>	wild sweet William	0.75-1.5	3-8
<i>Phlox glaberrima</i>	smooth phlox	2-4	3-8
<i>Phlox maculata</i>	wild sweet William	2-3	3-8
<i>Phlox pilosa</i> var. <i>ozarkana</i>	prairie phlox	1-2	4-9
<i>Physocarpus opulifolius</i>	ninebark	5-8	2-8
<i>Physostegia angustifolia</i>	obedient plant	2-4	3-9
<i>Physostegia virginiana</i>	obedient plant	3-4	3-9
<i>Pinus echinata</i>	short-leaf pine	50-60	6-9
<i>Platanus occidentalis</i>	American sycamore	75-100	4-9
<i>Podophyllum peltatum</i>	may-apple	1-1.5	3-8
<i>Podophyllum peltatum</i> f. <i>deamii</i>	may-apple	1-1.5	5-8
<i>Polemonium reptans</i>	Greek valerian	1-1.5	3-8
<i>Polygonatum biflorum</i>	Solomon's seal	1-3	3-8
<i>Polygonatum biflorum</i> var. <i>commutatum</i>	giant Solomon's seal	3-7	3-7
<i>Polymnia canadensis</i>	small-flowered leaf cup	2-4	4-7
<i>Polypodium polypodioides</i>	Resurrection fern	0.5-1	6-9
<i>Polypodium virginianum</i>	American wall fern	0.5-1	3-8
<i>Polystichum acrostichoides</i>	Christmas fern	1-2	3-9
<i>Pontederia cordata</i>	pickerel weed	2-4	3-10
<i>Populus deltoides</i>	eastern cottonwood	50-80	2-9
<i>Populus tremuloides</i>	American aspen	20-50	1-6
<i>Porteranthus stipulatus</i>	Indian physic	2.5-3	4-8
<i>Porteranthus trifoliata</i>	bowman's root	2-4	4-8
<i>Portulaca oleracea</i>	purslane	0.25-0.75	-
<i>Prunus americana</i>	wild plum	15-25	3-8
<i>Prunus angustifolia</i>	chickasaw plum	4-20	5-9

TABLE 11: NATIVE PLANT LIST

Manchester Road Form-Based Code

Scientific Name	Common Name	Height (ft.)	Zone
<i>Prunus serotina</i>	black cherry	50-80	3-9
<i>Prunus virginiana</i>	chokecherry	20-30	2-7
<i>Ptelea trifoliata</i>	hop tree	15-20	4-9
<i>Pycnanthemum pilosum</i>	American mountain mint	1-3	4-8
<i>Pycnanthemum tenuifolium</i>	slender mountain mint	2-3	4-8
<i>Pycnanthemum virginianum</i>	American mountain mint	2-3	3-7
<i>Quercus alba</i>	white oak	50-80	3-9
<i>Quercus bicolor</i>	swamp white oak	50-60	3-8
<i>Quercus coccinea</i>	scarlet oak	50-70	4-9
<i>Quercus ellipsoidalis</i>	northern pin oak	50-70	4-7
<i>Quercus falcata</i>	southern red oak	60-80	6-9
<i>Quercus imbricaria</i>	shingle oak	40-60	5-8
<i>Quercus macrocarpa</i>	bur oak	60-80	3-8
<i>Quercus marilandica</i>	blackjack oak	20-40	6-9
<i>Quercus muehlenbergii</i>	chinkapin oak	40-60	5-7
<i>Quercus nigra</i>	water oak	50-80	6-9
<i>Quercus palustris</i>	pin oak	50-70	4-8
<i>Quercus phellos</i>	willow oak	40-75	5-9
<i>Quercus rubra</i>	red oak	50-75	4-8
<i>Quercus shumardii</i>	shumard oak	40-60	5-9
<i>Quercus stellata</i>	post oak	35-50	5-9
<i>Quercus texana</i>	Texas red oak	50-80	6-9
<i>Quercus velutina</i>	black oak	50-60	3-9
<i>Ratibida columnifera</i>	long-head coneflower	1-3	4-9
<i>Ratibida pinnata</i>	grey-head coneflower	3-5	3-8
<i>Rhododendron prinophyllum</i>	roseshell azalea	4-8	3-8
<i>Rhus aromatica</i>	fragrant sumac	2-6	3-9
<i>Rhus copallina</i>	winged sumac	7-15	4-9
<i>Rhus glabra</i>	smooth sumac	9-15	3-9
<i>Rhus typhina</i>	staghorn sumac	15-25	3-8
<i>Ribes odoratum</i>	clove currant	6-12	4-8
<i>Robinia pseudoacacia</i>	black locust	30-50	3-8
<i>Rosa carolina</i>	Carolina rose	3-6	4-9
<i>Rosa setigera</i>	prairie rose	6-12	5-8
<i>Rudbeckia fulgida</i>	black-eyed Susan	2-3	3-9
<i>Rudbeckia hirta</i>	black-eyed Susan	2-3	3-7
<i>Rudbeckia laciniata</i>	cutleaf coneflower	2-9	3-9
<i>Rudbeckia maxima</i>	large coneflower	5-7	4-9
<i>Rudbeckia missouriensis</i>	Missouri coneflower	2-3	5-8
<i>Rudbeckia subtomentosa</i>	sweet coneflower	3-5	4-8
<i>Rudbeckia triloba</i>	brown-eyed Susan	2-3	4-8
<i>Ruellia humilis</i>	wild petunia	1.5-2	4-8
<i>Ruellia strepens</i>	wild petunia	1-3	5-8
<i>Sagittaria graminea</i>	arrowhead	1.5-2	4-10
<i>Sagittaria latifolia</i>	broad leaf arrowhead	1-4	5-10
<i>Salix discolor</i>	pussy willow	6-15	4-8
<i>Salvia azurea</i>	blue sage	3-5	5-9
<i>Salvia azurea var. grandiflora</i>	blue sage	3-5	5-9
<i>Salvia lyrata</i>	cancer weed	1-2	5-8
<i>Sambucus canadensis</i>	American elder	5-12	3-9
<i>Sanguinaria canadensis</i>	bloodroot	0.5-0.75	3-8
<i>Sassafras albidum</i>	sassafras	30-60	4-9
<i>Saururus cernuus</i>	lizard's tail	1-2	3-9
<i>Schizachyrium scoparium</i>	little bluestem	2-4	3-9
<i>Scutellaria incana</i>	skullcap	2-3	5-8
<i>Scutellaria ovata</i>	heart-leaved skullcap	1-2	4-9
<i>Sedum tematum</i>	three-leaved stonecrop	0.25-0.5	4-8
<i>Senna marilandica</i>	wild senna	3-6	4-9
<i>Sideroxylon lanuginosum</i>	chittamwood	15-45	6-10
<i>Silene caroliniana</i>	wild pink	0.75-1	5-8
<i>Silene regia</i>	royal catchfly	3-4	5-8
<i>Silene stellata</i>	starry campion	2-3	5-8
<i>Silene virginica</i>	fire pink	1-1.5	4-8
<i>Silphium integrifolium</i>	rosinweed	2-6	4-8
<i>Silphium laciniatum</i>	compass plant	5-9	3-8
<i>Silphium perfoliatum</i>	cup plant	4-8	3-9
<i>Silphium terebinthinaceum</i>	prairie dock	3-10	4-8
<i>Sisyrinchium angustifolium</i>	blue-eyed grass	1.5-2	4-9
<i>Sisyrinchium campestre</i>	prairie blue-eyed grass	0.5-1	2-8
<i>Smilax hispida</i>	sarsaparilla plant	20-40	4-8
<i>Solidago caesia</i>	blue stem goldenrod	1.5-3	4-8
<i>Solidago drummondii</i>	goldenrod	1.5-3	5-8
<i>Solidago flexicaulis</i>	broad leaf goldenrod	1-3	3-8
<i>Solidago gattingeri</i>	goldenrod	2.5-4	5-8

Scientific Name	Common Name	Height (ft.)	Zone
<i>Solidago hispida</i>	goldenrod	1-3	3-8
<i>Solidago juncea</i>	yellow tops	2-4	3-8
<i>Solidago odora</i>	sweet goldenrod	2-4	4-9
<i>Solidago riddellii</i>	goldenrod	2-3	3-7
<i>Solidago rigida</i>	goldenrod	3-5	3-9
<i>Solidago speciosa</i>	goldenrod	2-3	3-8
<i>Solidago ulmifolia</i>	elm-leaved goldenrod	1-3	3-8
<i>Sorghastrum nutans</i>	Indian grass	3-5	4-9
<i>Spigelia marilandica</i>	Indian pink	1-2	5-9
<i>Spiraea alba</i>	meadowsweet	3-4	3-7
<i>Spiranthes cernua var. odorata</i>	common ladies' tresses	0.75-2	5-9
<i>Sporobolus heterolepis</i>	prairie dropseed	2-3	3-9
<i>Staphylea trifolia</i>	bladdernut	10-15	3-8
<i>Stylophorum diphyllum</i>	celandine poppy	1-1.5	4-9
<i>Symphoricarpos orbiculatus</i>	coralberry	2-5	2-7
<i>Symphytotrichum anomalum</i>	aster	2.5-3	5-7
<i>Symphytotrichum oolentangiense</i>	skyblue aster	2-3	3-8
<i>Talinum calycinum</i>	fameflower	0.5-0.75	5-9
<i>Taxodium distichum</i>	bald cypress	50-70	4-9
<i>Thalia dealbata</i>	thalia	6-10	6-10
<i>Thalictrum dasycarpum</i>	meadow rue	3-5	4-7
<i>Thalictrum dioicum</i>	meadow rue	1-2	4-7
<i>Thaspium trifoliatum</i>	purple meadow parsnip	1-2.5	3-9
<i>Tilia americana</i>	American linden	50-80	2-8
<i>Tilia heterophylla</i>	white basswood	50-80	3-7
<i>Tradescantia bracteata</i>	spiderwort	1-1.5	4-9
<i>Tradescantia ernestiana</i>	spiderwort	1-2	5-9
<i>Tradescantia longipes</i>	spider wort	0.5-0.75	4-9
<i>Tradescantia ohiensis</i>	Ohio spiderwort	2-3	4-9
<i>Tradescantia subaspera</i>	zigzag spiderwort	2-2.5	5-9
<i>Tradescantia tharpii</i>	spider lily	0.5-1	4-9
<i>Tradescantia virginiana</i>	spider lily	1.5-3	4-9
<i>Tridens strictus</i>	longspike tridens	2-4	5-9
<i>Trillium flexipes</i>	wood lily	1-2	4-7
<i>Trillium luteum</i>	wood lily	1-1.5	4-8
<i>Trillium recurvatum</i>	wood lily	1-1.5	4-9
<i>Trillium sessile</i>	wood lily	0.5-1	4-8
<i>Trillium viride</i>	green trillium	1-1.5	5-8
<i>Tripsacum dactyloides</i>	eastern gamagrass	4-8	4-9
<i>Typha latifolia</i>	cattail	4-6	3-10
<i>Ulmus alata</i>	winged elm	30-50	6-9
<i>Ulmus americana</i>	American elm	60-80	2-9
<i>Ulmus rubra</i>	slippery elm	40-60	3-9
<i>Uvularia grandiflora</i>	large-flowered bellwort	1.5-2	4-9
<i>Verbena canadensis</i>	rose verbena	0.5-1.5	5-9
<i>Verbena hastata</i>	American blue vervain	2-6	3-8
<i>Verbena stricta</i>	hoary vervain	2-4	4-7
<i>Verbesina alternifolia</i>	wingstem	4-8	4-8
<i>Verbesina helianthoides</i>	crown beard	2-3	5-8
<i>Vernonia arkansana</i>	ironweed	4-6	5-8
<i>Vernonia baldwinii</i>	western ironweed	3-5	5-9
<i>Vernonia fasciculata</i>	ironweed	2-4	4-9
<i>Vernonia gigantea</i>	giant ironweed	5-8	5-8
<i>Vernonia missurica</i>	ironweed	3-5	4-9
<i>Veronicastrum virginicum</i>	Culver's root	4-7	3-8
<i>Viburnum dentatum</i>	arrowwood viburnum	6-10	2-8
<i>Viburnum lentago</i>	nannyberry viburnum	14-16	2-8
<i>Viburnum prunifolium</i>	blackhaw viburnum	12-15	3-9
<i>Viburnum rufidulum</i>	rusty blackhaw viburnum	10-20	5-9
<i>Viola pedata</i>	bird's foot violet	0.25-0.5	4-8
<i>Viola pedatifida</i>	larkspur violet	0.5-0.75	3-8
<i>Viola pubescens var. eriocarpa</i>	smooth yellow violet	0.5-1	3-7
<i>Viola sororia</i>	wooly blue violet	0.5-0.75	3-7
<i>Viola striata</i>	pale violet	0.75-1	4-7
<i>Waldsteinia fragarioides</i>	barren strawberry	0.25-0.5	4-7
<i>Wisteria frutescens</i>	American wisteria	15-30	5-9
<i>Woodsia obtusa</i>	blunt-lobed woodsia	1-1.5	4-8
<i>Woodwardia areolata</i>	netted chain fern	1.5-2	3-9
<i>Zanthoxylum americanum</i>	toothache tree	15-20	3-7
<i>Zizia aptera</i>	zizia	1-3	3-8
<i>Zizia aurea</i>	golden Alexander	1.5-3	3-8

TABLE 12: INVASIVE SPECIES

Manchester Road Form-Based Code

Source: Missouri Botanical Gardens 2010. <http://www.mobot.org/MOBOT/research/mepp/ratings.shtml>

A-1--Widespread, essentially in all counties of Missouri.		
<i>Festuca arundinacea</i>	tall fescue	Poaceae
<i>Festuca pratensis</i>	meadow fescue	Poaceae
<i>Lespedeza cuneata</i>	Sericea Lespedeza	Fabaceae
<i>Lonicera japonica</i>	Japanese honeysuckle	Caprifoliaceae
A-2--Regional species invasive in more than 10 Missouri counties		
<i>Alliaria petiolata</i>	garlic mustard	Brassicaceae
<i>Bromus sterilis</i>	bromegrass	Poaceae
<i>Bromus tectorum</i>	thatch bromegrass	Poaceae
<i>Carduus nutans</i>	musk thistle	Asteraceae
<i>Centaurea stoebe</i>	spotted knapweed	Asteraceae
<i>Dioscorea oppositifolia</i>	air-potato	Dioscoreaceae

<i>Elaeagnus umbellata</i>	Autumn Olive	Elaeagnaceae
<i>Euonymus fortunei</i>	wintercreeper	Celastraceae
<i>Lonicera maackii</i>	bush honeysuckle	Caprifoliaceae
<i>Lythrum salicaria</i>	purple loosestrife	Lythraceae
<i>Melilotus albus</i>	sweet clover	Fabaceae
<i>Melilotus officinalis</i>	sweet clover	Fabaceae
<i>Phalaris arundinacea</i>	reed canary grass	Poaceae *
<i>Securigera varia</i>	purple crown vetch	Fabaceae
<i>Sorghum halepense</i>	Johnson grass	Poaceae
A-3--Regional species invasive in 10 or fewer Missouri counties		
<i>Acer ginnala</i>	amur maple	Aceraceae
<i>Bothriochloa bladhii</i>	Eurasian bluestem	Poaceae
<i>Celastrus orbiculatus</i>	Asian bittersweet	Celastraceae
<i>Ligustrum sinense</i>	Chinese privet	Oleaceae
<i>Lonicera morrowii</i>	Morrow's bush honeysuckle	Caprifoliaceae
<i>Myriophyllum spicatum</i>	Eurasian water-milfoil	Haloragidaceae
<i>Potamogeton crispus</i>	curly pondweed	Potamogetonaceae
<i>Rhamnus cathartica</i>	common buckthorn	Rhamnaceae



Example of an Awning Sign



Example of an Awning Sign



Example of a Town Center Directory and Event Kiosk



Example of a Town Center Directory



Example of a halo illuminated Wall Sign



Example of a Wall Sign



Example of a Wall Sign and a Minor Projecting Blade Sign



Example of a Minor Projecting Blade Sign



Example of a Minor Projecting Blade Sign



Example of a Major Projecting Blade Sign



Example of a Sandwich Board



Example of a Window Sign



Example of a Window Sign