

Project Development Workshop - Illinois

FY 2018-2021 Transportation
Improvement Program

December 13, 2016

Local Funding Programs

- Surface Transportation Block Grant Program – Suballocated (STP-S)
- Congestion Mitigation and Air Quality Improvement Program (CMAQ)
- Applications and supporting information available online at www.ewgateway.org - Due Thursday, March 2, 2017 at 4 pm

Work Eligible for Federal Reimbursement

- Three Milestones or Phases
 - Preliminary Engineering – Approved engineering services contract
 - Right of Way Acquisition – Acquisition authority (A-Date approval)
 - Construction – Approved plans specifications and estimates & right of way clearance/Authority to Advertise

Items Eligible for Reimbursement

Federal funding must be obligated (authorized) prior to incurring costs

- Preliminary engineering
 - Surveys
 - Public hearings
 - Environmental and historical documentation
- Right of Way (land acquisition)
- Construction/Construction Engineering
 - Utility relocation costs for which the local agency is responsible
 - Advertising costs

Amounts Available – Illinois

- STP-S
 - Programming in FY 2021
 - Construction only (no construction engineering)
 - Approx. \$4.7 million available to program (subject to change)
- CMAQ
 - Programming in FY 2018, 2019
 - Preliminary engineering, right of way, construction (inc. const eng.)
 - Approx. \$2.5 million available to program (subject to change)
- FY 2018 = October 1, 2017-September 30, 2018

Who can apply for funds?

- Sponsor must be transportation related government agency such as:
 - City
 - County
 - Transit District
 - State
- Other potential sponsors contact EWG for more information (i.e. public/private partnership)

Surface Transportation Block Grant Program - Suballocated (STP-S)



Eligible Uses of STP-S Funds

- Construction of:
 - Highways (including resurfacing/reconstruction), bridges (rehab/replacement), and tunnels
 - Transit capital projects
 - Intelligent transportation systems capital improvements
- Carpool, corridor parking facilities
- Bicycle and pedestrian facilities

Eligible Uses of STP-S Funds

- Planning, design, or construction of boulevards largely in right of way of former interstates or other divided highways
- Protection for bridges
- Transportation modifications to facilitate direct intermodal interchange in and out of port facility
- More eligible activities listed in Appendix A of STP-S workbook

Location of Projects – STP-S

- Roadway Project eligibility determined by functional classification of roadway.
 - Expressway
 - Principal Arterial
 - Minor Arterial
 - Urban Collector (major or minor)
 - Rural Major Collector
- **Minor rural collector and local road not eligible**

Exceptions to Location

- Bridges
 - Bridge protection (systemic maintenance)
 - Deficient Bridges on all public roads are eligible
 - Minimal road work is allowed on local road or rural minor collector
- Bicycle and pedestrian projects
- Highway and transit safety infrastructure improvements
- Modifications near port facility

Functional Classification

- Functional class maps available on TIP application page under resources
 - Proposed changes to functional class are accepted in May and November



Eligible Expenses - STP-S

- Up to 75% federal funding for:
 - Construction only
 - No construction engineering

Congestion Mitigation and Air Quality Improvement Program (CMAQ)



CMAQ Program – Purpose

- To fund transportation projects or programs that will contribute to attainment or maintenance of the national ambient air quality standards for ozone, carbon monoxide, and particulate matter
- At least 25% funds used to reduce particulate matter (PM 2.5)

CMAQ – Eligible Projects

- Traffic flow improvements
 - Traffic signals
 - Intersection improvements
 - Roundabout
 - Bi-directional turn lane
 - Traffic signal synchronization
 - Intelligent Transportation Systems

CMAQ – Eligible Projects

- Other categories
 - Diesel retrofits
 - Transit investments
 - Bicycle & pedestrian facilities (non-recreational)
 - Projects or programs that shift travel demand to nonpeak hours or other transportation modes
 - Alternative fuel projects including vehicle acquisitions and refueling facilities

INELIGIBLE – CMAQ

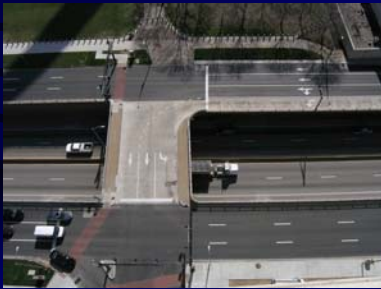


- Projects that add capacity to a road
 - New roadway
 - Expansion of road capacity by adding additional traffic lane
- Routine maintenance and rehabilitation projects

Eligible Expenses - CMAQ

- Up to 80% federal funding for:
 - Preliminary engineering
 - Right of way acquisition
 - Implementation/construction (inc. construction engineering)
- Increased federal participation for:
 - Carpool/vanpool activities – up to 100%

Questions?



Project Applications

- **Deadline Thursday, March 2, 2017**
 - Deliver application to EWG by 4 PM or postmark by that day
 - Electronic submission must be made by 4 PM on March 2, 2017
 - Electronic submission is to be one file per project (adobe acrobat).

Project Applications

- STP-S and CMAQ applications – must be completed on East-West Gateway website
- Read ‘Important Application Information’ before starting a new application and FAQs
- Final session of workshop covers individual applications

Project Applications

- Include contact emails (project/application)
- Coordination
 - Right of way – Easements/TSCL/permanent
 - Utility
 - Railroad

Project Applications

- Americans with Disabilities Act (ADA)
 - Transition Plan
 - Required for public agencies with over 50 employees
 - Identify obstacles
 - Describe how to make facilities accessible
 - Specify schedule for upgrading facilities to ADA
 - Indicate official in charge of Transition Plan

Project Applications

- Americans with Disabilities Act (ADA)
 - Alterations
 - If sidewalk present along project limits then curb ramps must be constructed or reconstructed to be ADA compliant

Project Applications

- Bicycle and Pedestrian Facilities
 - Consider walking and bicycling as equals with other transportation modes
 - Shall be considered, where appropriate, in conjunction with all new construction and reconstruction of transportation facilities
 - AASHTO and NACTO provide guidance on safe bicycle design
- Great Streets - Digital design guide
 - <http://www.greatstreetsstlouis.net/>

Supporting Documentation – STP-S

- Preservation
 - PASER Rating – Including map showing evaluation locations at uniform distance (5-10 blocks urban; ¼ to ½ mile rural)
 - Bridge Sufficiency ratings - location map showing change in alignment (vertical or horizontal)
 - Pavement Management Plan

Supporting Documentation – STP-S

– Safety

- Complete crash summary form for crashes
- Provide entire fatal and serious injury crash report(s)
- 2012-2014 Crash Rate – use formula on page 19 of app
- 2010-2014 Crash Rate – use crash calculation form
Crash information
- Crash modification factors
- Bicycle/pedestrian crash reports
- Benefit/Cost ratio calculation (for safety priority project only)

Supporting Documentation – STP-S

– Congestion

- Level of Service calculations
- Congestion Management Study if project is adding lanes
- ITS Architecture Consistency Statement

– Access to Opportunity

- Map showing location of transit route(s) in relationship to project

Supporting Documentation – STP-S

– Sustainable Development

- Pages of adopted plans that relate to project (not whole report)

– Goods Movement

- Truck ADT
- Location of proposed development

Supporting Documentation – STP-S

– Other Required information

- Project location map
 - Typical section (before/after improvements)
 - Pages of ADA transition plan referencing proposed project
 - Bicycle/pedestrian facility location map
 - Estimate of cost form (from website)
 - Facility ownership documented
- Answer all questions relevant to project
 - Refer to application for info needed

Supporting Documentation – CMAQ

– Required information

- Project location map
- Typical section (before/after improvements)
- Traffic engineering analysis (for road projects)
- ITS Architecture Consistency Statement
- Completed CMAQdata.xls spreadsheet
 - If project not included, request EWG for form by 2/16/17

Supporting Documentation – CMAQ

– Required information

- Documentation of facility ownership
 - Letter of support required from facility owner if not sponsor of project
 - Estimate of cost form
 - Please include in application and attach excel file separately in electronic submittal
- Answer all questions relevant to project
 - Refer to application for info needed

Changes Since Last Year

- STP-S:
 - Use PASER for pavement evaluation (preservation)
 - Crash Calculation Form for five year crash rt. (safety)
 - Crash Modification Factors (safety)
 - Benefit/Cost analysis (safety priority projects)
 - Additional questions – provide more detailed information on proposed project
- CMAQ
 - Traffic Engineering Analysis required for road projects

TIP Application Requirements

- Application fee – ½ of 1 % of requested federal funds
- Completed checklist before final application submission – signatures and initials required
- Supporting documentation
- Operations and Maintenance Form (one per sponsor)

TIP Applications

- Scheduling needs to be realistic
 - Funds obligated at one time – show federal funds in one year
 - Construction phase may only be programmed by itself (not combined with other federally participating phase)
 - Include time for:
 - Railroads
 - Utility relocations and notify utilities if project approved
 - Right of Way
 - Parks (if project impacts park acquired with LWCF)
 - Environmental

TIP Applications

- IDOT Bureau of Local Roads and Streets Manual
 - <http://bit.ly/IDOTBLRManual>
- Document other sources of funding (other local match)

TIP Applications

- For quicker processing by EWG we ask that the following are submitted separately or attached to the end of the application:
 - Application fee - one for each submitted project or if one check, itemize each project
 - CMAQdata.xls spreadsheet – CMAQ app only
 - Estimate of cost spreadsheet
 - Operations and Maintenance form – only one form needed per sponsor

Questions?



Important Dates – Project Scheduling

Fiscal Year – October 1 through September 30

- Federal funds must be obligated by September 30 of the year that funds are programmed
- Work with IDOT Local Roads to make sure federal funds for project are authorized and/or placed on a letting schedule to ensure this deadline is met

Upcoming meetings/deadlines

- Preliminary applications (optional) due **Thursday, January 26, 2017**
- **Project Review Workshop**
– Early February
- Final applications due **Thursday, March 2, 2017**

TIP Development Timeline

- Recommendations to Illinois TPC: **early May 2017**
- Draft TIP and air quality conformity document to board: **June 28, 2017**
- Public open houses: July 2017– *Attendance encouraged*
- Final TIP and air quality conformity document to board: **August 30, 2017**

After Board Approval

- Projects not selected will receive application fee refund
- IDOT will assist with project implementation

Resources

- On EWG TIP application page
 - Functional class maps
 - Bridge sufficiency ratings
 - Project application checklists
 - Operations and Maintenance
 - Title VI Info
 - US DOT Statement on Bike/Ped Accommodations

Resources

- On EWG TIP application page
 - STP-S and CMAQ Guidance from FHWA
 - CMAQdata.xls spreadsheet
 - Safety spreadsheets
 - Estimate of costs form
 - Frequently Asked Questions

Questions?



STP-S – Screening

- Review checklist for all requirements
 - Sponsor & project eligibility
 - Supplemental information required
 - Signed Certifications (person of responsible charge, Title VI, Reasonable Progress, right of way, matching funds, checklist)
 - Application fee
 - Completed Operations and Maintenance form

STP-S – Screening

- Routine Accommodations
 - FHWA – “We expect every transportation agency to make accommodation for bicycling and walking a routine part of their planning, design, construction, operations, and maintenance activities.” – see Page 8 of application

STP-S – Screening

- Congestion Management Study (CMS)
 - CMS required for projects adding at least one mile of new road/through lanes or constructing new road/through lanes or between major intersections (arterials)
- Comply with *St. Louis Regional ITS Architecture* and Congestion Management Process
 - ITS Consistency Statement

STP-S – Evaluation Factors

- Project assigned priority area
- Cost-effectiveness
 - Based on total construction cost (not including construction engineering)
 - Better cost effectiveness = better score
- Level of usage (person miles of travel)
 - Preservation priority projects: weighting of facility based on type

STP-S – Evaluation Factors

Evaluation Area in STP Application	Principle and Strategy in <i>Connected2045</i>
Preservation	Preserve and maintain the existing system
Safety	Promote safety and security
Access to Opportunity	Provide more transportation choices Support public transportation
Congestion/Sustainable Development	Support neighborhoods and communities throughout the region

STP-S – Evaluation Factors

Evaluation Area in STP Application	Principle and Strategy in <i>Connected2045</i>
Sustainable Development	Foster a vibrant downtown Support a diverse economy throughout the region Support quality job development Link transportation planning to housing, environment, education, and energy
Goods Movement	Strengthen intermodal connections

STP-S – Evaluation Factors

- Consistency with clean air requirements
- At least one project per county
- No more than one project per City
- Political and community support

See evaluation methodology handout

CMAQ – Screening

- Sponsor eligibility
- Project eligibility
 - Net emissions reduction
- Other considerations
 - Routine accommodations
 - Comply with regional ITS architecture and Congestion Management Process
 - Fill out ITS Project Consistency Statement (if necessary)

CMAQ – Screening

- Sponsor & Project eligibility
- Review checklist for all requirements
- Signed Certifications (person of responsible charge, Title VI, Reasonable Progress, right of way, matching funds, checklist)
- Completed CMAQdata.xls spreadsheet – necessary for project evaluation
- Application fee
- Completed O&M form

CMAQ – Evaluation Factors

- Consistency with regional priorities in *Connected2045*
- Cost effectiveness
 - Requested federal funds
 - Estimated emission reductions

Non-Federally Funded Projects

- Regionally Significant Project
 - transportation project (other than an exempt project) that is on a facility which serves regional transportation needs (such as access to and from the area outside of the region, major activity centers in the region, major planned developments such as new retail malls, sports complexes, etc., or transportation terminals as well as most terminals themselves) and would normally be included in the modeling of a metropolitan area's transportation network, including at a minimum all principal arterial highways and all fixed guideway transit facilities that offer an alternative to regional highway travel.

Non-Federally Funded Projects

- Any new roadway or project adding capacity (through lanes) must be included in the Regional Travel Demand model regardless of funding source – open in next 5 years
- Form due March 2, 2017 – do not include with project applications
- Complete form only if your agency is constructing regionally significant project without federal assistance – Very few Local Public Agencies will meet this criteria

Upcoming Workshops

- Early February 2017– Project Review Workshop

Questions?

- Eligibility
- TIP Application
- Scheduling
- Evaluation
- Non-federal project form

For More Information

- STP-S and CMAQ Projects
 - Jason Lange - jason.lange@ewgateway.org
- Title VI
 - Questions – Roz Rodgers
roz.rodgers@ewgateway.org
- ITS Consistency Statement – Larry Grither
Larry.grither@ewgateway.org
- Phone numbers:
 - Missouri: (314) 421-4220
 - Illinois: (618) 274-2750
