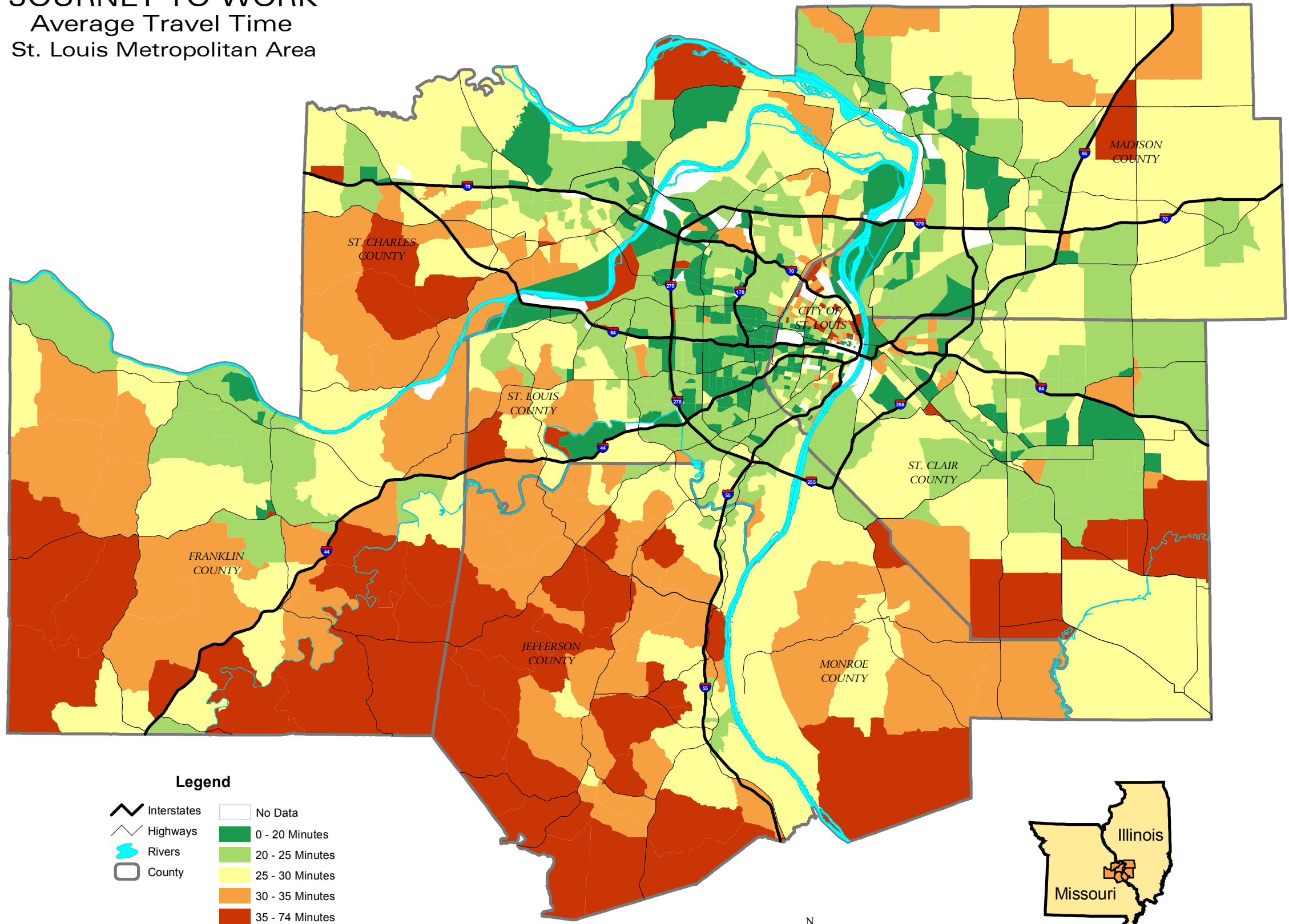


JOURNEY TO WORK

Average Travel Time

St. Louis Metropolitan Area

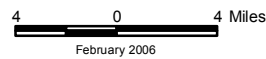


Legend

- Interstates
- Highways
- Rivers
- County
- No Data
- 0 - 20 Minutes
- 20 - 25 Minutes
- 25 - 30 Minutes
- 30 - 35 Minutes
- 35 - 74 Minutes

Travel Time Represented in minutes By Transportation Analysis Zone

Source: East-West Gateway Council of Governments, US Census Bureau.



February 2006