

# Job Accessibility: Peak Hour by Auto

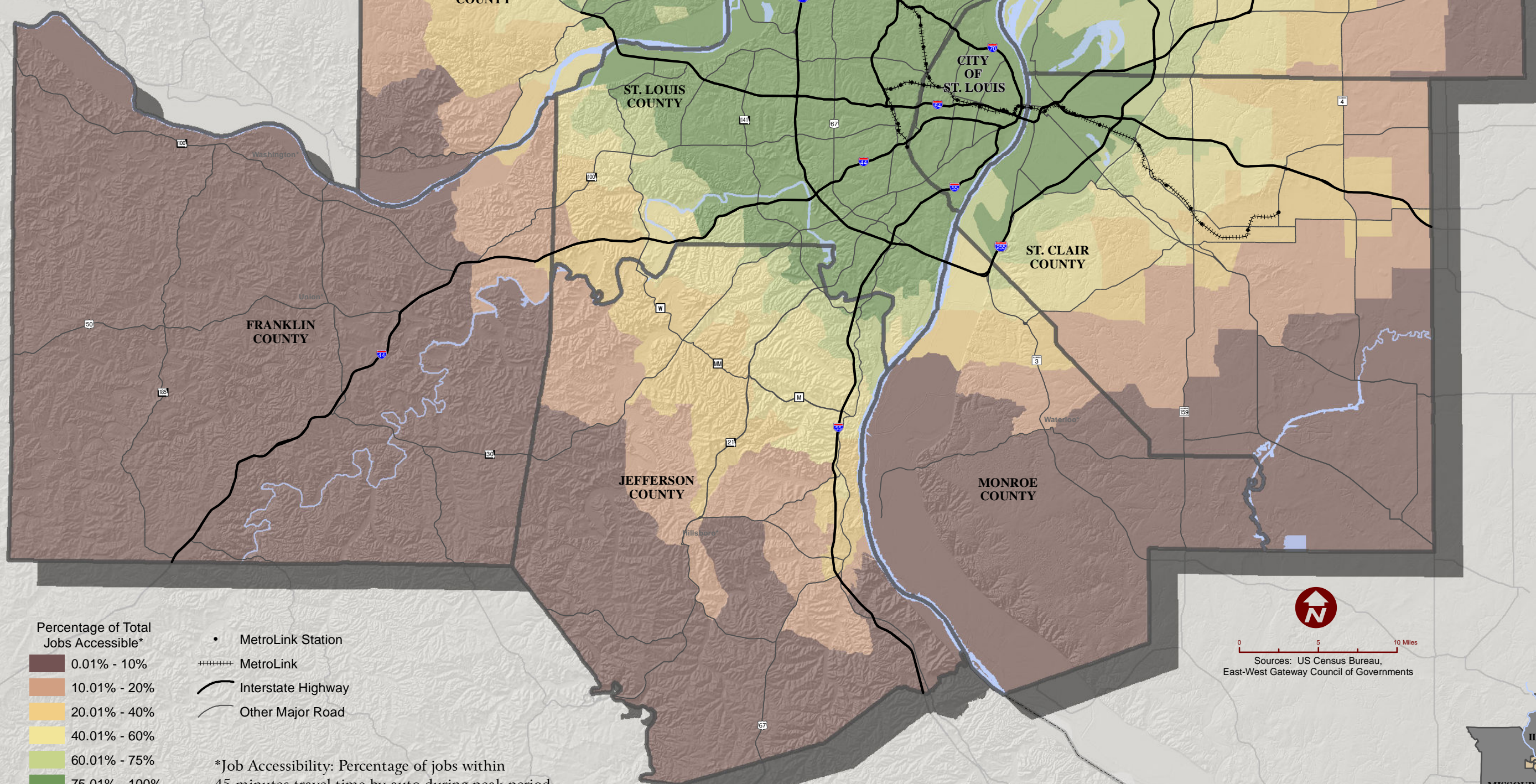
St. Louis Metropolitan Area



**EAST-WEST GATEWAY**  
Council of Governments

Creating Solutions Across Jurisdictional Boundaries

September 2010



Percentage of Total  
Jobs Accessible\*

- 0.01% - 10%
- 10.01% - 20%
- 20.01% - 40%
- 40.01% - 60%
- 60.01% - 75%
- 75.01% - 100%

- MetroLink Station
- +++++ MetroLink
- Interstate Highway
- Other Major Road

\*Job Accessibility: Percentage of jobs within  
45 minutes travel time by auto during peak period.



0 5 10 Miles

Sources: US Census Bureau,  
East-West Gateway Council of Governments

