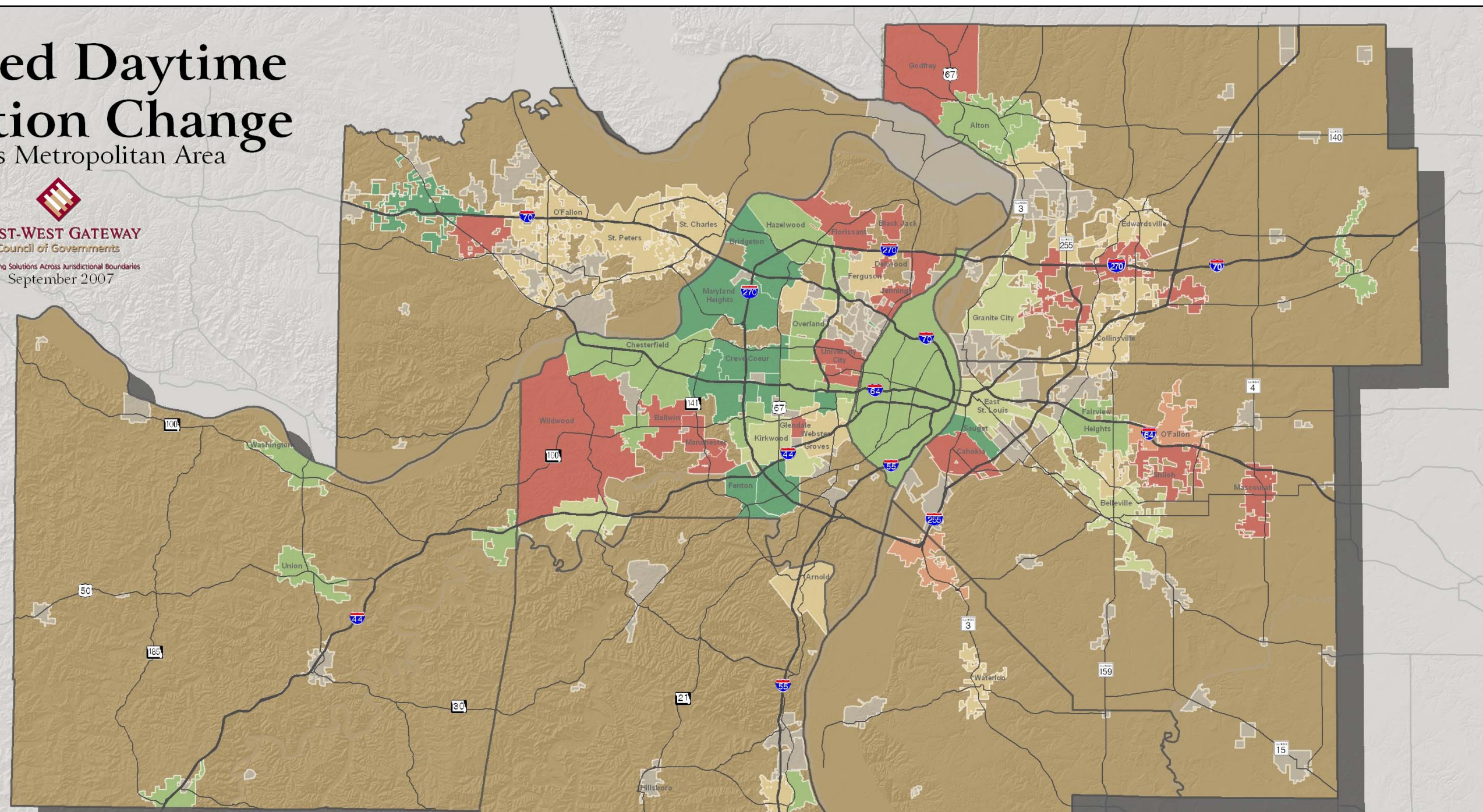


This map is presented as a jpg document with a reduced file size for quick loading from our homepage. The original of this map is over 4 megabytes, which causes extremely long load times and other problems for PCs that have slower connections. Click on this image or go to <http://www.ewgateway.org/GIS/RegMapsList/regmapslist.htm> for a list of this and other detailed regional maps.

Estimated Daytime Population Change

St. Louis Metropolitan Area

EAST-WEST GATEWAY
Council of Governments
Creating Solutions Across Jurisdictional Boundaries
September 2007



Percent Municipal Population Change

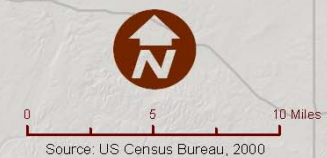
- Over 50%
- 16% to 50%
- 1% to 15%
- 14% to 0%
- 19% to -15%
- 42% to -20%
- No Data

Largest Increase in Daytime Population

Municipality	Population	# of Workers	Estimated Daytime Population	# Change	% Change
Sauget	249	3,576	3,745	3,496	1,404.02
Fenton	4,360	22,465	24,491	20,131	461.72
Creve Coeur	16,500	38,631	46,947	30,447	184.53
Bridgeton	15,550	28,035	35,869	20,319	130.67
Maryland Heights	25,756	44,301	55,194	29,438	114.30

Largest Decrease in Daytime Population

Municipality	Population	# of Workers	Estimated Daytime Population	# Change	% Change
Shiloh	7,643	824	4,425	-3,218	-42.10
Glendale	5,767	779	3,689	-2,078	-36.03
Wildwood	32,884	4,880	21,288	-11,596	-35.26
Dellwood	5,255	705	3,456	-1,799	-34.23
Black Jack	6,792	804	4,523	-2,269	-33.41



Estimated Daytime Population

The concept of the daytime population refers to the number of people who are present in an area during normal business hours, including workers. This is in contrast to the "resident" population present during the evening and nighttime hours. Information on the expansion or contraction experienced by different communities between nighttime and daytime populations is important for many planning purposes, including those dealing with transportation, disaster, and relief operations.

<http://www.census.gov/population/www/socdemo/daytime/daytimepop.html>

