

Earthquake Liquefaction Potential Scenario 1

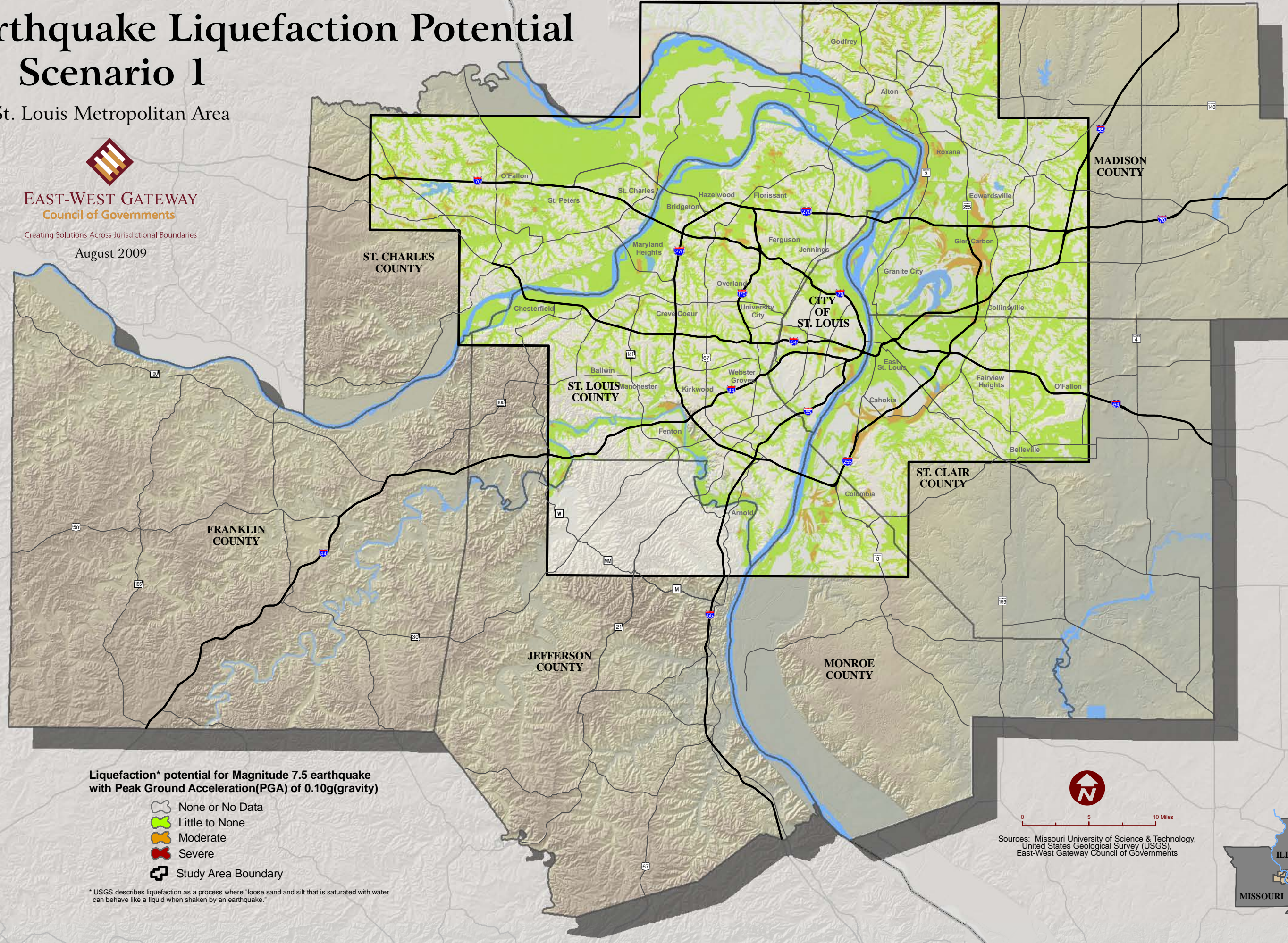
St. Louis Metropolitan Area








EAST-WEST GATEWAY
Council of Governments

Creating Solutions Across Jurisdictional Boundaries

August 2009



Liquefaction* potential for Magnitude 7.5 earthquake with Peak Ground Acceleration(PGA) of 0.10g(gravity)

-  None or No Data
-  Little to None
-  Moderate
-  Severe
-  Study Area Boundary

* USGS describes liquefaction as a process where "loose sand and silt that is saturated with water can behave like a liquid when shaken by an earthquake."



0 5 10 Miles

Sources: Missouri University of Science & Technology, United States Geological Survey (USGS), East-West Gateway Council of Governments

