

Contaminated Sites

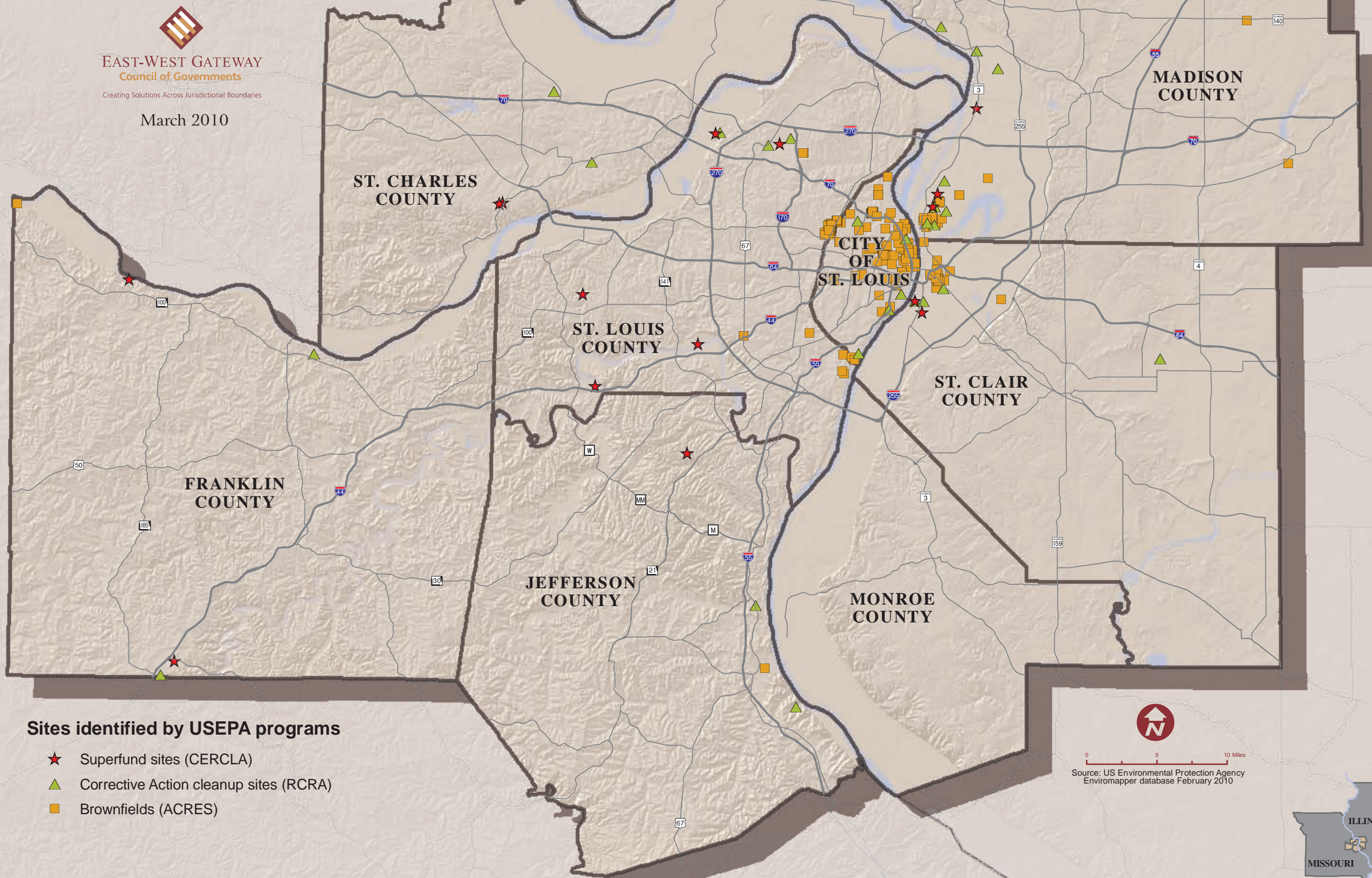
St. Louis Metropolitan Area



EAST-WEST GATEWAY
Council of Governments

Creating Solutions Across Jurisdictional Boundaries

March 2010



Sites identified by USEPA programs

- ★ Superfund sites (CERCLA)
- ▲ Corrective Action cleanup sites (RCRA)
- Brownfields (ACRES)



0 5 10 Miles
Source: US Environmental Protection Agency
Enviromapper database February 2010

