

Environmental Health Hazard Exposure Index by 2010 Block Group

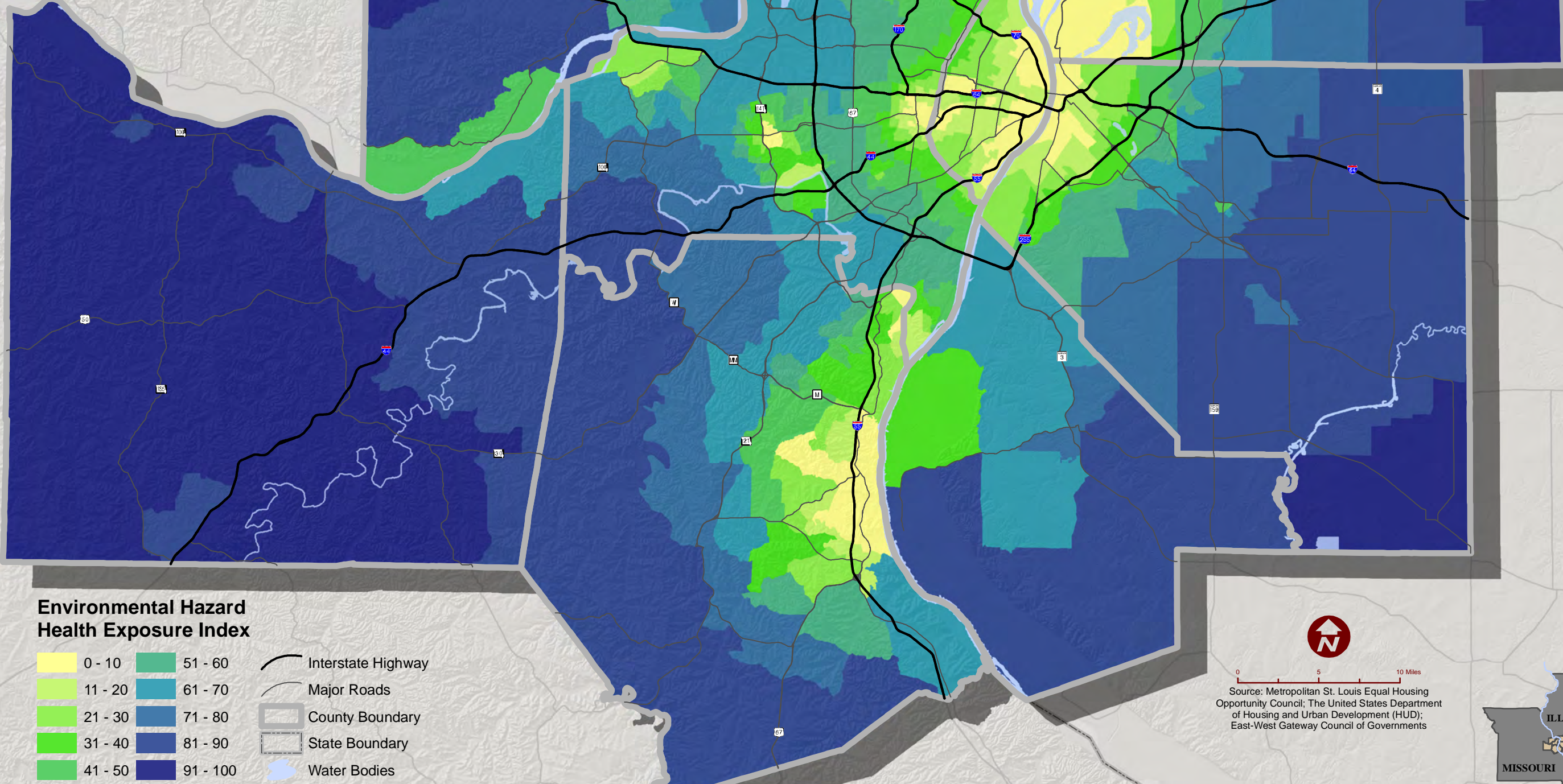
St. Louis Metropolitan Area



EAST-WEST GATEWAY
Council of Governments

Creating Solutions Across Jurisdictional Boundaries

March 2013



Environmental Hazard Health Exposure Index

	0 - 10		51 - 60
	11 - 20		61 - 70
	21 - 30		71 - 80
	31 - 40		81 - 90
	41 - 50		91 - 100

- Interstate Highway
- Major Roads
- County Boundary
- State Boundary
- Water Bodies

(0 is least desirable, 100 is most desirable)



0 5 10 Miles
Source: Metropolitan St. Louis Equal Housing Opportunity Council; The United States Department of Housing and Urban Development (HUD); East-West Gateway Council of Governments

