

# Change in Population for Low-Income Individuals 2000-2010

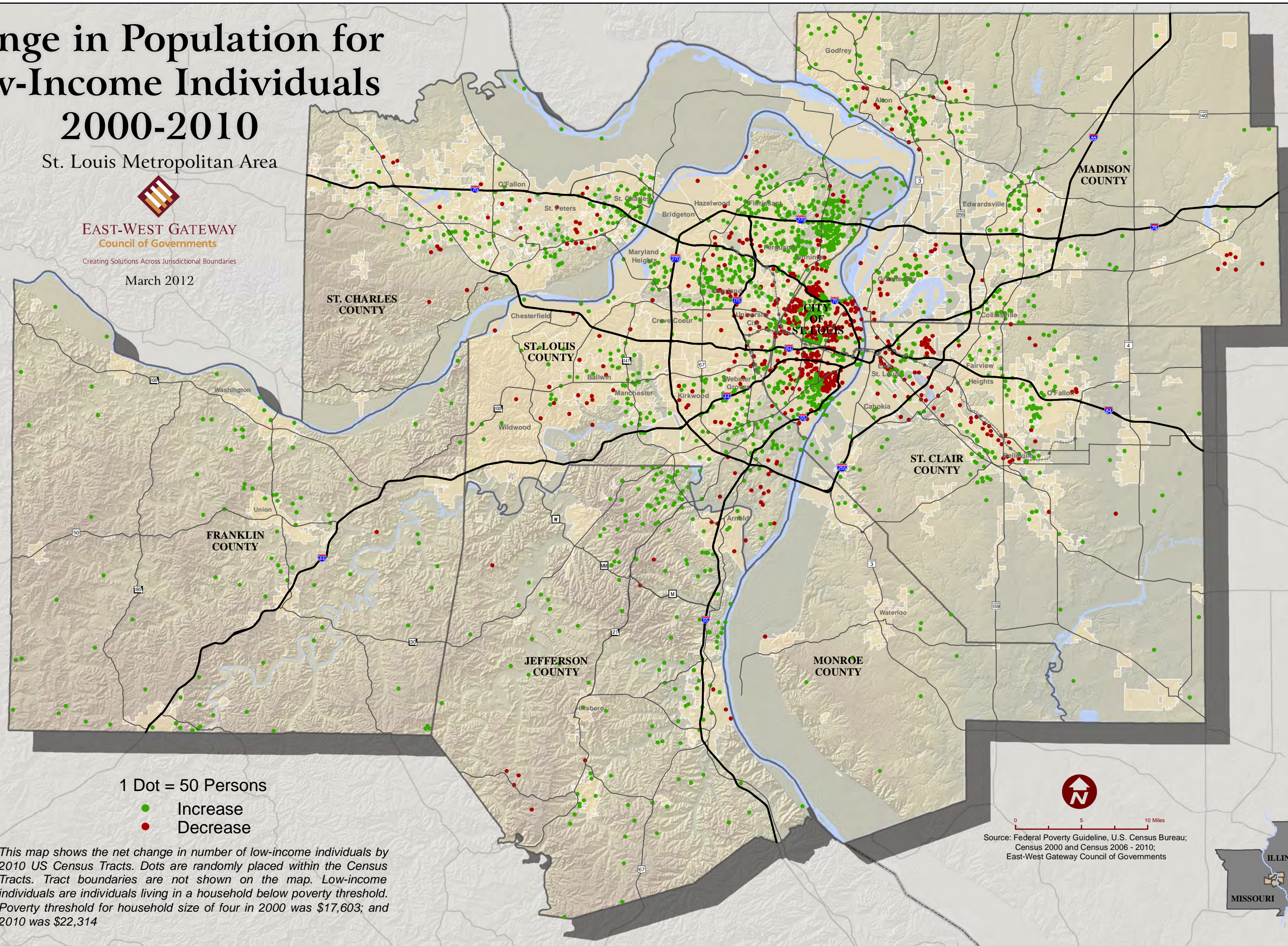
St. Louis Metropolitan Area



**EAST-WEST GATEWAY**  
Council of Governments

Creating Solutions Across Jurisdictional Boundaries

March 2012



1 Dot = 50 Persons

- Increase
- Decrease

*This map shows the net change in number of low-income individuals by 2010 US Census Tracts. Dots are randomly placed within the Census Tracts. Tract boundaries are not shown on the map. Low-income individuals are individuals living in a household below poverty threshold. Poverty threshold for household size of four in 2000 was \$17,603; and 2010 was \$22,314*



0 5 10 Miles

Source: Federal Poverty Guideline, U.S. Census Bureau;  
Census 2000 and Census 2006 - 2010;  
East-West Gateway Council of Governments

