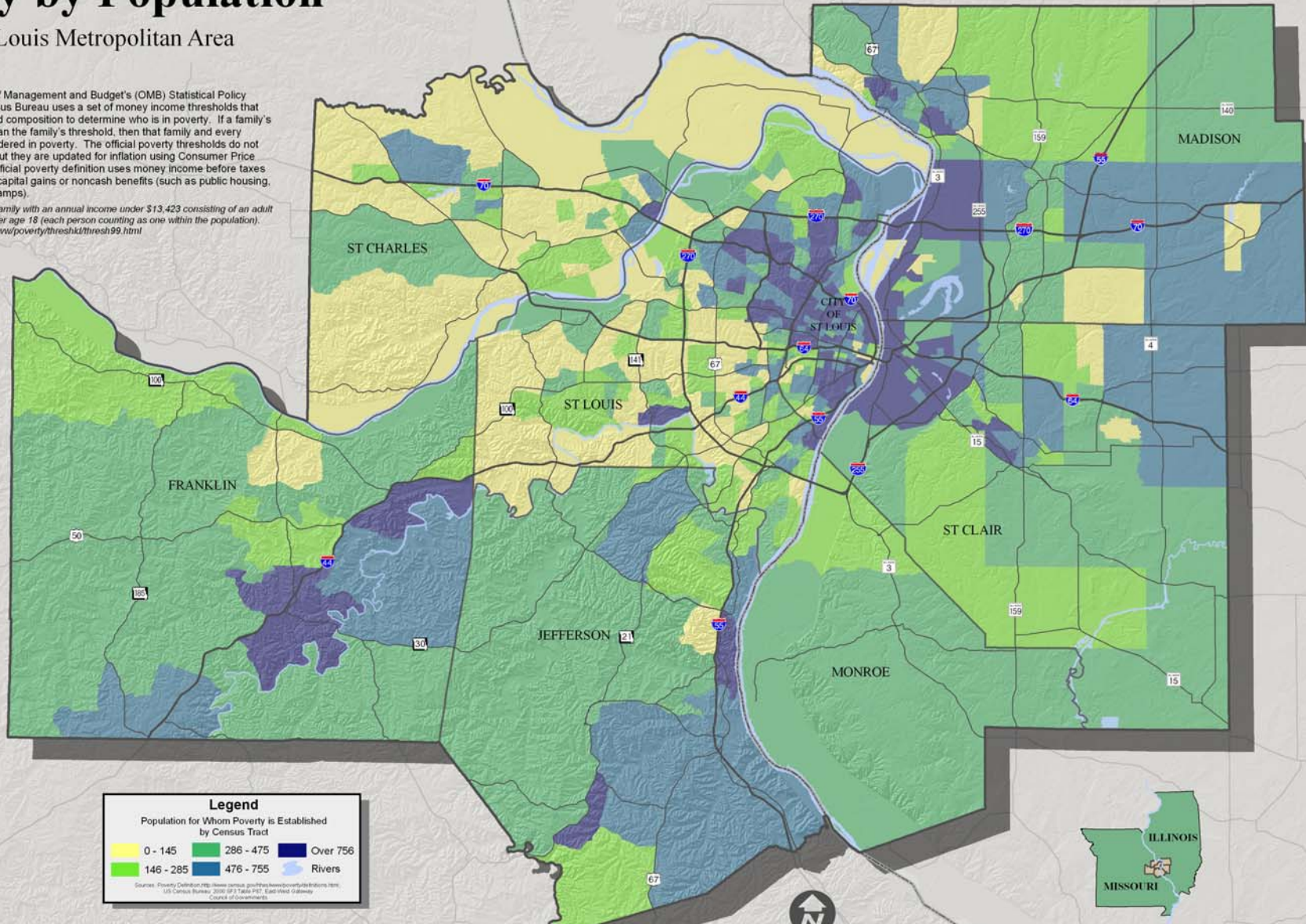


Poverty by Population

St. Louis Metropolitan Area

Following the Office of Management and Budget's (OMB) Statistical Policy Directive 14, the Census Bureau uses a set of money income thresholds that vary by family size and composition to determine who is in poverty. If a family's total income is less than the family's threshold, then that family and every individual in it is considered in poverty. The official poverty thresholds do not vary geographically, but they are updated for inflation using Consumer Price Index (CPI-U). The official poverty definition uses money income before taxes and does not include capital gains or noncash benefits (such as public housing, Medicaid, and food stamps).

Example: Three person family with an annual income under \$13,423 consisting of an adult and two dependents under age 18 (each person counting as one within the population).
www.census.gov/hhes/www/poverty/threshkl/thresh99.html



Legend
 Population for Whom Poverty is Established by Census Tract

0 - 145	286 - 475	Over 756
146 - 285	476 - 755	Rivers

Sources: Poverty Definition: <http://www.census.gov/hhes/www/poverty/threshkl/thresh99.html>; 1990 Census Bureau; 2000 US Census; 2007 East-West Gateway Council of Governments