






ST LOUIS REGIONAL FREIGHTWAY

Your Gateway to the World

Mary Lamie, Executive Director
St. Louis Regional Freightway




Mission and goals

Mission To **optimize** the region's freight transportation network through public and private partnerships

Goals To produce results that **strengthen the St. Louis region** by increasing job growth through manufacturing and logistics, and improving the local economy

- **Regional Freight Needs Analysis and Development Plan** - Maximizing funding opportunities through public-private partnerships and improving multimodal capabilities
- **Develop and implement a Marketing Plan** – St. Louis Region is recognized as national and global premier freight hub.



A Bi-State Development Enterprise

2

Successes in the first year

- Public and private sector partnership to produce the multimodal list of projects. Improving the region's overall competitiveness. Supporting economic and new business development
- Launched Thefreightway.com website as the premier source of information and point of contact regarding regional logistics capabilities and site selection.
- Engaging potential partners throughout the Midwest and into the Gulf of Mexico
- Hosting regional meeting on critical freight and logistics opportunities including the USDOT FHA. He now describes our effort as a model for the country. The USDOT Federal Maritime Administration also reviewed our critical maritime assets.
- Gaining critical support from congressional delegations from IL and MO
- Developed marketing and advocacy plans for the regional effort

Freightway

Members include manufacturing, logistics, industrial real estate, workforce development, economic development organizations, academia, all modes of transportation both the IDOT and MoDOT and the East-West Gateway Council of Governments.

- **Needs Analysis and Freight Development Committee**

Terminal Rail Association of St. Louis – President Mike McCarthy

- **Marketing Committee**

America's Central Port - Executive Director Dennis Wilmsmeyer

- **Policy Committee**

*MO Baptist University Dean of Graduate Studies and MO State Highways Commissioner
Dr. Ed Hillhouse*

ECONOMIC IMPACT – MULTI-MODAL IMPACT - EFFICIENCY

Highest Priority

Merchants Rail Bridge Replacement

- 128-year old rail bridge that spans the Mississippi River
- Connections to six Class I railroads
- Currently carries more than 40 million gross tons annually
- Total estimated project cost = \$222 million
- FASTLane Application – MoDOT and Bi-State Development

Interstate 270 Mississippi River Bridge Replacement

- Replacement of two existing structures
- Construction of new structure to accommodate forecasted vehicle/freight flow
- Total estimated project cost = \$160 - \$175 million

ECONOMIC IMPACT – MULTI-MODAL IMPACT - EFFICIENCY

Highest Priority

Interstate 270 Improvements

- Increase capacity by widening to six lanes from Lilac Ave. to IL-111
- Corridor improvements between Lilac Ave. to Lindbergh Blvd.

North Riverfront Commerce Corridor Improvements

- Improve mobility and circulation issues in 3,000 acre multimodal logistics and business district

Relocate IL Route 3 in St. Clair County, Illinois

- New construction between East St. Louis and Sauget

Falling Springs Diversion Loop/IL Route 3 Railroad Bypass

- Construction of bypass loop from IL Route 3 over A&S railroad in Sauget to eliminate substantial through-traffic delays

2016 FREIGHT DEVELOPMENT COMMITTEE ACCOMPLISHMENTS

- Project list was presented to the USDOT FHA Administrator Gregory Nadeau and highest priority projects were discussed with the Administrator and his staff
- Freight Development Committee's model continues to be promoted as a model for other region's to follow
- St. Louis Region included with the 24 USDOT Freight Economic Roundtables
- Freight Development Committee was responsible for letters of support for FASTLANE projects submitted by the region.

2016 FREIGHT DEVELOPMENT COMMITTEE ACCOMPLISHMENTS

- Freight Development Project List presented, referenced and discussed during critical freight and logistic meeting with key decision makers – IDOT, MoDOT, elected leaders and business leaders
- MoDOT will incorporate MO projects with the MO State Freight Plan
- October 2016 Freight Development Project List was unanimously endorsed by the East-West Gateway Council of Governments

2017 Project List Timeline

2017 Freightway Multimodal Transportation Project List Update Part 1 of 2

- Introductions

November through January 2017

- Submit Projects
- Data Gathering for Needs Analysis

January 12, 2017

Part 1

- Review Goals
- Update Criteria
- Obtain Initial Input on Project Evaluation

March 9, 2017

Part 2

- Discuss Findings of Freight Needs Analysis
- Review 2017 Project List Priorities

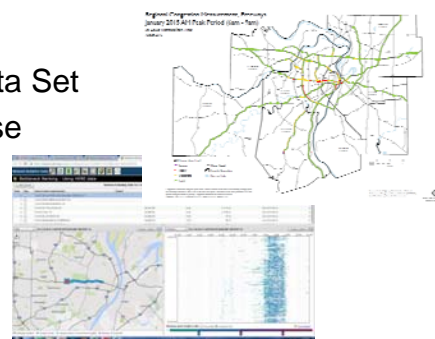
April/May 2017

- Release Draft 2017 Project List
- Present Needs Analysis & Development Plan

2017 UPDATE: ROLE OF NEEDS ANALYSIS

Document Existing Conditions to Identify the Needs

- Freight Network (highway, railroads, airports, waterways)
- National Performance Management Research Data Set
- Federal Railroad Administration Crossing Database
- Regional Travel Demand and ITS Data



Identify Network Constraints

- Constraints due to system congestion and mode interfaces

2017 Update: Needs Analysis

Individual Project Sheets

- Project Description including Regional Benefits as It Relates to the Freightway Criteria
- Estimated Cost to Implement, if available
- Location Map with Project Limits
- Project Contact
- Project Status Pie Chart
- EWGCOG Project Selection Criteria Checklist
- Other suggestions?

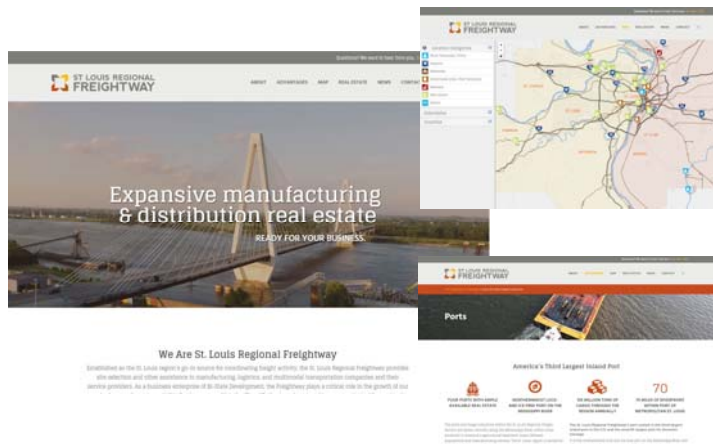


2016 Marketing Overview

Developed and implemented a marketing campaign that gains national and global recognition as a premier freight hub.

- Building a brand and identity – Digital engagement campaign launched April 2016
- Becoming recognized as a premier multimodal freight hub – Local newspapers, KTRS six part freight series, national trade magazines
- Building ambassadors who can assist in promoting the region's manufacturing and logistics advantages
- Promoting awareness for freight-related economic growth
- Building partnerships with other regions – Port of New Orleans, USDOT FHA and MARAD, Chicago, KC and Minneapolis.

REGION'S DIGITAL PRESENCE – APRIL 2016

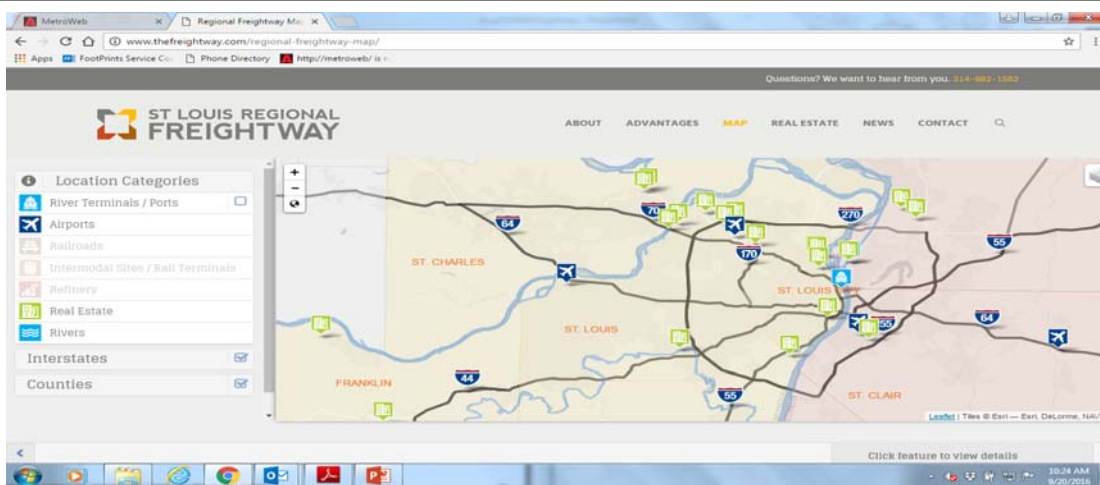


TheFreightway.com is our front door for attracting businesses, investors and real estate speculators to the region

The fact sheet and comprehensive real estate resource are **tools for the entire region**



TOP INDUSTRIAL USER REAL ESTATE SITES





APRIL 2016

April 27th 2016 – Freight Summit

Keynote speaker – Federal Highway Administration Administrator Gregory Nadeau

“I can’t think of any place in the country whose history is more closely linked with trade than St. Louis. That’s what we are talking about – trade. It’s about commerce. It’s about expanding economic opportunity,”

“Regionalism and this kind of smart strategic thinking. Are leveraging maximum benefits for the people we all serve and creates jobs and opportunities.” USDOT FHWA Administrator Gregory Nadeau – 2016 St. Louis Freight Summit.



September 2016

September 12, 2016 – U.S.DOT Beyond Traffic Roundtable

Federal Highway Administration Administrator Gregory Nadeau

Maritime Administrator Paul Jaenichen

The St. Louis Region is key to nation’s freight future. If anyone buys anything in the U.S., the odds are good it traveled through St. Louis. U.S.DOT FHWA Administrator Gregory Nadeau

St. Louis Post-Dispatch Editorial Sept. 18, 2016

MOVING FORWARD – Container on Barge

Expand commerce and trade through containerized cargo growth through intermodal rail and container on barge

- Demonstrate COB service is feasible between inland cities in the Midwest and the Port of New Orleans via the Mississippi River system
- Promoting an alternative in the event of supply-chain disruption
- St. Louis Region has three ports with COB capacity
- Coordinate with intermodal logistic companies
 - Barge, 3 party logistic providers and rail and truck modes all need to be working together
 - Working with freight forwarders Unigroup, Ingram, SCF Marine, trucking companies and our shortline railroads -TRRA and Class I railroads.
- The St. Louis Region received two 2016 MARAD Grants to help jump start container on barge

Container on Barge is a Hot Topic

Container on Barge is a hot topic at the Oct. 18, 2016 St. Louis meeting of the U.S. Maritime Transportation System National Advisory Committee (MTSNAC) and spotlighted the St. Louis Regional Freightway's public – private partnerships to advance COB operations along the inland waterways

- published by The Waterways Journal Weekly on Oct 2016



MOVING FORWARD

Manufacturing, Logistics and Truck Driver Workforce Initiatives

- Two year technical degree has starting salaries earning up to \$40,000, \$50,000 and higher per year.
- Manufacturing is no longer a dirty, dangerous or disappearing industry.
- Manufacturing is a smart, safe, fast-paced and high-paying career using the latest in state-of-the art technology.
- Nationwide and local shortage for truck drivers.



**ST LOUIS REGIONAL
FREIGHTWAY**

Your Gateway to the World

MCLamie@TheFreightway.com

TheFreightway.com