



Our Mission

To **optimize** the region's freight transportation network through public and private partnerships

Our Goal

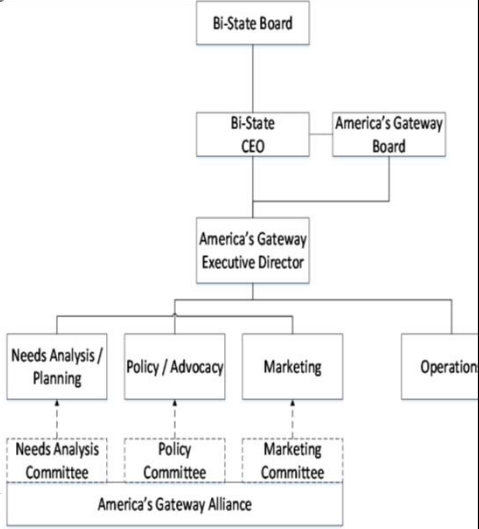
To produce results that **strengthen the St. Louis region** by increasing job growth through manufacturing and logistics, and improving the local economy



GOALS

September 2014

- Proactive needs analysis
- Planning, programming, and coordinating freight-related improvements
- Marketing the region's freight assets and opportunities
- Freight advocacy
- Operations support




COMMITTEE Members


Public and Private Sector Leadership

- Manufacturing
- Logistics
- Transportation
- Commercial Real Estate
- Workforce Development
- Economic Development Organizations
- Academia
- Illinois and Missouri Departments of Transportation
- East-West Gateway Council of Governments


GOALS




Build on regional successes




Promote industry specialization




Strengthen modal flexibility



Enable e-commerce growth



Capitalize on Panama Canal expansion

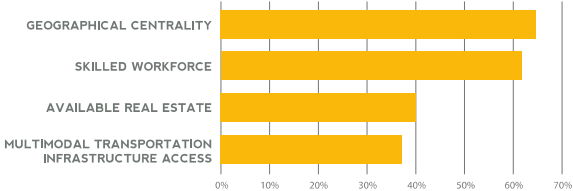


A Bi-State Development Enterprise

5

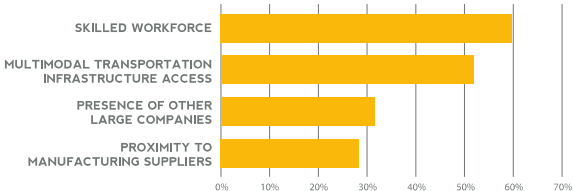
REAL ESTATE INDUSTRY WORKSHOP

Key Strengths




Strength	Percentage
GEOGRAPHICAL CENTRALITY	~65%
SKILLED WORKFORCE	~60%
AVAILABLE REAL ESTATE	~40%
MULTIMODAL TRANSPORTATION INFRASTRUCTURE ACCESS	~35%

Under-Marketed Strengths



Strength	Percentage
SKILLED WORKFORCE	~60%
MULTIMODAL TRANSPORTATION INFRASTRUCTURE ACCESS	~50%
PRESENCE OF OTHER LARGE COMPANIES	~30%
PROXIMITY TO MANUFACTURING SUPPLIERS	~25%



A Bi-State Development Enterprise

6

February 2016 - Alliance Workshop

St. Louis Regional Freightway Alliance

Needs Analysis and Freight Development Committee

Terminal Rail Association of St. Louis – President Mike McCarthy

Marketing Committee

America's Central Port - Executive Director Dennis Wilmsmeyer

Policy Committee

MO Baptist University - Dean of Graduate Studies Dr. Ed Hillhouse

Early April 2016

- **Early April** - Committees reconvene
 - Draft Needs Analysis/Freight Development Plan
 - Marketing Plan
 - Policy - Goals for key performance Indicators and identify policy initiatives

Freight Development Project List

Primary Criteria

- Economic Impact
- Multimodal Impact
- Efficiency Impact

Secondary Criteria

- Strategic Alignment
- Business Development Impact
- Public Safety

SELECTED PROJECTS

Highest Priority

Merchants Rail Bridge Replacement

- 126-year old rail bridge that spans the Mississippi River
- Connections to six Class I railroads
- Currently carries more than 40 million gross tons annually
- Total estimated project cost = \$222 million

Interstate 270 Mississippi River Bridge Replacement

- Replacement of two existing structures
- Construction of new structure to accommodate forecasted vehicle/freight flow
- Total estimated project cost = \$160 - \$175 million

SELECTED PROJECTS

Highest Priority

Interstate 270 Improvements

- Increase capacity by widening to six lanes from Lilac Ave. to IL-111
- Estimated cost = \$350 - \$400 million
- Corridor improvements between Lilac Ave. to Lindbergh Blvd.
- Estimated cost = \$243 million

North Riverfront Commerce Corridor Improvements

- Improve mobility and circulation issues in 3,000 acre multimodal logistics and business district
- Total estimated cost = \$55 million

SELECTED PROJECTS

Highest Priority

Relocate IL Route 3 in St. Clair County, Illinois

- Improve access to I-70, Stan Musial Veteran's Memorial Bridge, Sauget Industrial Park and St. Louis Downtown Airport
- New construction between East St. Louis and Sauget
- Estimated cost = \$125 million (two lanes) or \$170 million (4 lanes)

Falling Springs Diversion Loop/IL Route 3 Railroad Bypass

- Construction of bypass loop from IL Route 3 over A&S railroad in Sauget to eliminate substantial through-traffic delays
- Total estimated cost = \$20 - \$25 million

FUNDING OPPORTUNITIES

FASTLANE

- Freight Network Study – East West Gateway
- Merchants Bridge - Public-private partnership
Bi-State Development Terminal Railroad Association MoDOT

TIGER Grant

- Interstate 270 improvements – MoDOT

REGION'S DIGITAL PRESENCE

The screenshot displays the homepage of TheFreightway.com. The main header features the logo and navigation links. A large banner image shows a bridge over water with the text "Expansive manufacturing & distribution real estate" and "READY FOR YOUR BUSINESS". Below this, there is a section titled "We Are St. Louis Regional Freightway" with a brief description of the organization's mission. To the right, a map of the St. Louis area is shown with various locations marked. Below the map, there is a section titled "America's Third Largest Inland Port" with several icons and statistics.

TheFreightway.com is our front door for attracting businesses, investors and real estate speculators to the region

The fact sheet and comprehensive real estate resource are **tools for the entire region**



April 2016

April 27th 2016 – Freight Summit

- Keynote speaker – Federal Highway Administration Administrator Gregory Nadeau
- Transitioned from Freight Working Group to a Council
- Presentation of Draft Needs Analysis/Freight Development Plan and Marketing Plan and Policy Report to industry leaders.
- Release website



Moving Forward

- **Working Group Committees**
 - Container on Barge
 - Truck Drive Workforce Initiatives
 - Real Estate – Brokers and Developers
- **Develop and build partnerships** with other regions that can benefit the region's freight and manufacturing investment. (Mid-West Coalitions, New Orleans, Houston, Columbus)
- **Summer 2016**
 - Commence the Needs Analysis/Freight Development Plan
 - Council Meeting
 - Identify Policy Initiatives
 - Finalize Key Performance and Financial Plan
 - Meet with Congressional Delegation and National Industry Organizations for freight funding.




**ST LOUIS REGIONAL
FREIGHTWAY**
Your Gateway to the World

MCCLamie@TheFreightway.com TheFreightway.com