



Lower Big Ca
Upper Pa
Upper Darde
Ferrene Cragg
Yellow Cragg
14
Merian

St. Louis Regional Digital Microwave Network

October 28, 2015

East-West Gateway Board of Directors



EAST-WEST GATEWAY
Council of Governments

Project Timeline

- **November 2007**
 - Kickoff meeting of regional radio technicians
- **December 2007 – March 2008**
 - Land mobile radio survey performed
- **June 2008 – Final Report Released**
 - Presented to East-West Gateway Board
 - Interoperable Communications Core Group was formed



St. Louis Regional Land Mobile Communications Plan

- A plethora of radio frequencies in use throughout region
- Much of the existing equipment was obsolete
- Interoperability among disparate systems was limited
- FCC Narrowbanding Mandate and Project 25 compliance was looming

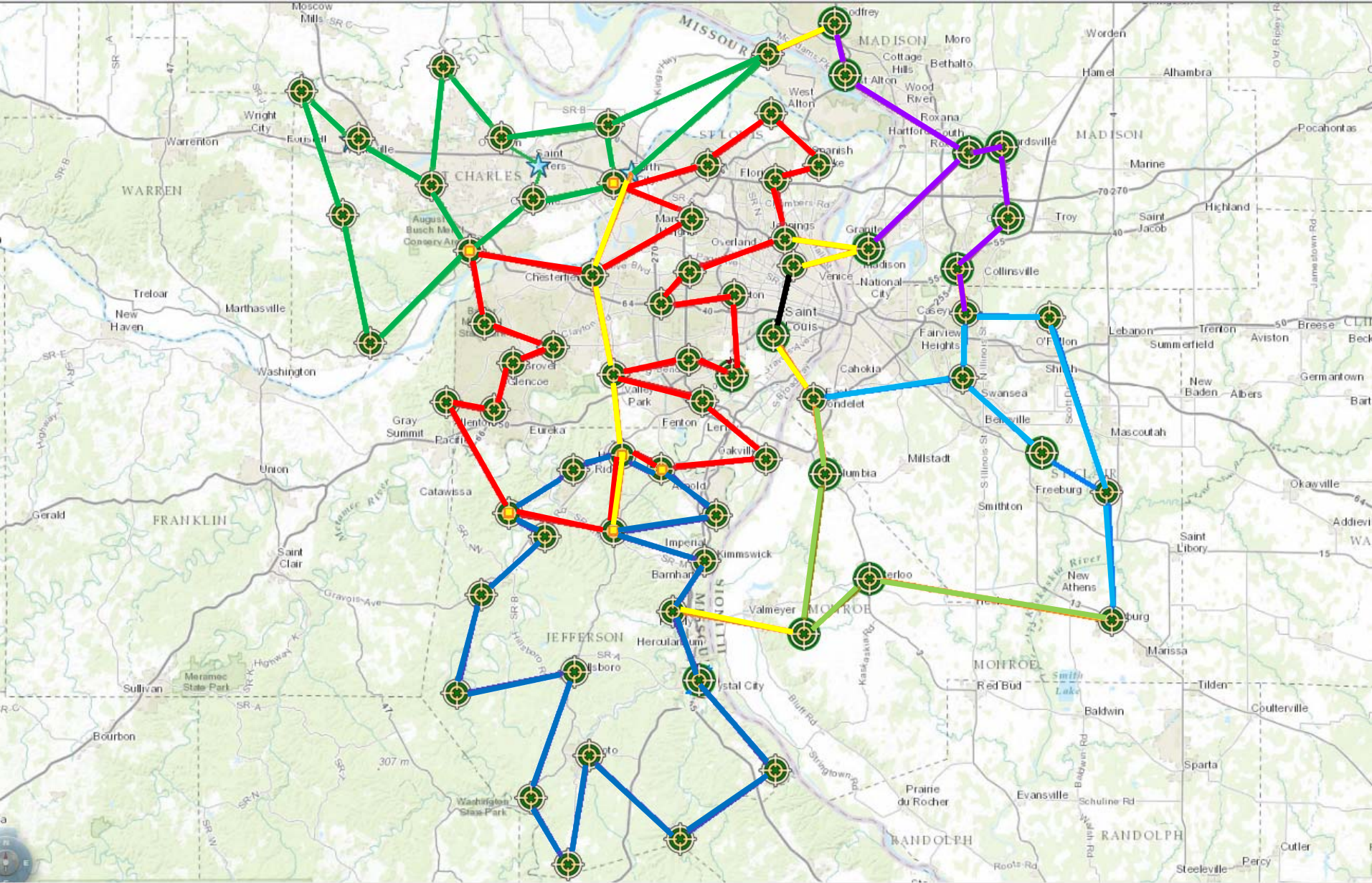


Plan Recommendations

- Build a modern Digital Microwave Network that supports a “System Of Systems” design
- Install 700/800 MHz P-25 radio systems on the Network
- Pursue a coordinated common and open, regional standard for communications
- Comply to FCC narrowband mandate



St. Louis Regional Digital Microwave Network



Results

- **Better Radio Coverage**
 - East-West Gateway built the highway, Counties built the off roads, a State-of-art Communications System
 - Many radio “dead spots” have been eliminated
 - System users can travel miles outside of their jurisdictions and still have interoperability with their dispatchers
- **Greater Unity of Effort**
 - Interoperable Communications Core Group
 - Enhanced Operational Activity
 - Regional Frequencies for Specialty Response Units
- **Costly T1 Lines Eliminated**
 - Microwave reliability 99.9999% Up Time (.0001% down)



Future Expansion

- **First Responder Network Authority (FirstNet)**
 - A high-speed, nationwide wireless broadband network dedicated to public safety
- **P25 Inter RF Subsystem Interface (ISSI)**
 - Provides extended coverage area for subscriber units that are roaming into other systems
- **Gateway Green Light**
 - ITS will be integrated to provide a seamless multi-jurisdictional transportation network



Next Steps

- **Planning**
 - Develop regional radio frequency plan
 - Create communication operational plans for regional incident response and preplanned events
- **Training**
 - Operator training on new radio equipment
 - Training on the available frequencies in the regional frequency plan.
- **Exercise**

